

|                     |   |                 |            |
|---------------------|---|-----------------|------------|
| <b>AGENCY NAME:</b> | <b>University of South Carolina Lancaster</b> |                 |            |
| <b>AGENCY CODE:</b> | <b>H37</b>                                    | <b>SECTION:</b> | <b>20E</b> |

---

**Fiscal Year 2017-18**  
**Accountability Report**

---

**SUBMISSION FORM**

|                       |   |
|-----------------------|---|
| <b>AGENCY MISSION</b> | <p>Abbreviated Mission Statement (Approved by the USC Board of Trustees, June 2016)</p> <p>The University of South Carolina Lancaster, a regional campus of the University of South Carolina, has as its mission to provide higher education and intellectual leadership to its service area. At the heart of this mission is a teaching faculty of high quality dedicated to excellence in instruction, scholarship, public and professional service, and creative endeavor which enrich the classroom experience. USC Lancaster offers a varied curriculum grounded in the liberal arts and focused on preparing students to continue their education in the University and throughout life. Complete mission statement available at <a href="http://www.ipr.sc.edu/mission/lancaster_ms.htm">http://www.ipr.sc.edu/mission/lancaster_ms.htm</a>.</p> |
|-----------------------|---|

|                      |   |
|----------------------|---|
| <b>AGENCY VISION</b> | <p>In fulfilling the mission of the campus stated above in the USC Lancaster Mission Statement, we look to the tenets of the USC System statement for the overarching vision for our mission to our campus' service area. USC Lancaster aspires to be a leader among the university's Palmetto College campuses as a comprehensive learning center offering equal access to high-quality university programs and services. USC Lancaster must be a dynamic, forward-looking and proactive institution of higher learning that relates productively to its community and to the greater University of South Carolina. USC Lancaster seeks to continuously enhance its intellectual environment and expand access to its academic programs.</p> |
|----------------------|---|

Please select yes or no if the agency has any major or minor (internal or external) recommendations that would allow the agency to operate more effectively and efficiently.

|   |                          |                                     |
|---|--------------------------|-------------------------------------|
| <b>RESTRUCTURING<br/>RECOMMENDATIONS:</b> | <b>Yes</b>               | <b>No</b>                           |
|   | <input type="checkbox"/> | <input checked="" type="checkbox"/> |

Please identify your agency's preferred contacts for this year's accountability report.

|                           | <u><b>Name</b></u>         | <u><b>Phone</b></u> | <u><b>Email</b></u>  |
|---------------------------|----------------------------|---------------------|--|
| <b>PRIMARY CONTACT:</b>   | Dr. Walter P. Collins, III | 803-313-7001        | <a href="mailto:collinsw@sc.edu">collinsw@sc.edu</a>                 |
| <b>SECONDARY CONTACT:</b> | Dr. Lisa Hammond           | 803-313-7044        | <a href="mailto:lhammond@mailbox.sc.edu">lhammond@mailbox.sc.edu</a> |

|                     |  |                 |     |
|---------------------|--|-----------------|-----|
| <b>AGENCY NAME:</b> | University of South Carolina Lancaster |                 |     |
| <b>AGENCY CODE:</b> | H37                                    | <b>SECTION:</b> | 20E |

I have reviewed and approved the enclosed FY 2017-18 Accountability Report, which is complete and accurate to the extent of my knowledge.

|   |                               |  |  |
|---|-------------------------------|--|--|
| <b>AGENCY DIRECTOR<br/>(SIGN AND DATE):</b> | <i>Walter P. Collins, III</i> |  |  |
| <b>(TYPE/PRINT NAME):</b>                   | Dr. Walter P. Collins, III    |  |  |

|  |                             |  |             |
|--|-----------------------------|--|-------------|
| <b>BOARD/CMSN CHAIR<br/>(SIGN AND DATE):</b> | <i>John C. von Lehe Jr.</i> |  | SEP 17 2018 |
| <b>(TYPE/PRINT NAME):</b>                    | John C. von Lehe Jr.        |  |             |

|                     |   |                 |            |
|---------------------|---|-----------------|------------|
| <b>AGENCY NAME:</b> | <b>University of South Carolina Lancaster</b> |                 |            |
| <b>AGENCY CODE:</b> | <b>H37</b>                                    | <b>SECTION:</b> | <b>20E</b> |

### **AGENCY’S DISCUSSION AND ANALYSIS**

USC Lancaster serves six area counties and admits all students who show promise of academic success. Most of USCL's students are first generation college students from rural areas, small towns, and cities across the central Piedmont area of the Carolinas. Through a broad commitment to equity, an extensive scholarship and financial aid program, a variety of weekday and evening course offerings, and online degree completion programs, USC Lancaster seeks to make education accessible, affordable, and convenient to the residents of this area.

USC Lancaster has always provided a strong foundational education for area students, but in recent years, the campus has also significantly expanded four-year online degree completion offerings to provide greater opportunities for current and future students in and beyond our service area. The campus offers two general Associate Degrees, one in Arts and another in Sciences, in addition to specialized Associate degrees in Business and Criminal Justice, and an Associate in Technical Nursing available through a partnership between USCL and York Technical College. As the Palmetto College campus with the strongest enrollment in four-year degree completion programs, USCL also currently offers students fourteen Palmetto College degrees. The campus is also now in the early stages of creating a satellite site in Indian Land to better serve the residents in our northern service area.

While the campus has always worked closely with the USC system, the growth of the Palmetto College campuses and online degree completion programs has provided greater opportunities for collaboration, and accordingly the campus is aligning goals, strategies, and objectives with the Palmetto College Blueprint dashboard—our success depends on the core components of recruitment, retention, and success rates, strong faculty, community outreach, and strong fiscal stewardship.

In pursuit of our primary mission, teaching excellence remains the highest priority at USC Lancaster. Students at USCL have access to approachable and well-qualified faculty and staff members, expansive technological support, and academic and personal support services, as well as opportunities for internships and activities beyond the classroom. Public service is emphasized at all levels. The USC Lancaster campus is a hub for local and regional community events of all sizes and purposes. Students, faculty, and staff are participants and leaders out in our community. The Gregory Family YMCA provides equipment and programming to campus and community to keep residents of Lancaster and the surrounding areas of all ages active and healthy.

The campus administration continues to work closely with the USC Budget Office and the Administration of Palmetto College in order to adjust and strengthen campus funding. The campus continues to enjoy strong community support, with regular funding from the city and county, and from the local Educational Foundation of USC Lancaster. With budget reforms, a tuition increase, and an increase to recurring parity funding by the legislature, USC Lancaster’s financial health continued to improve substantially during this fiscal year, and projections for next year are also strong.

|                     |   |                 |            |
|---------------------|---|-----------------|------------|
| <b>AGENCY NAME:</b> | <b>University of South Carolina Lancaster</b> |                 |            |
| <b>AGENCY CODE:</b> | <b>H37</b>                                    | <b>SECTION:</b> | <b>20E</b> |

## Agency Highlights

- Historic student enrollment high of 1910 for Fall 2017 semester, with continued excellence in teaching, advising, and student support programs.
- Fifth anniversary of the Native American Studies Center.
- Expanded student opportunities in Graduation with Leadership Distinction.
- Consistently strong faculty scholarship activities.
- Significant growth in engaged community partnerships.

## Strategic Planning Goal 1

### Increase enrollment, retention, and graduation rates in service of providing an outstanding educational experience to USC Lancaster students

USC Lancaster's enrollment remains strong; indeed, Fall 2017 represented historic high enrollment for the campus, with 1910 registered students for Fall. USCL has made stable enrollment a priority, with a two-pronged strategy: first, increasing recruiting efforts, and second, focusing on retention and student success for continuing students.

Highlights for this area:

- Strong retention rate of 62%, well above the 51.4% rate for all 20 South Carolina two-year public institutions, and the highest of the Palmetto College Campuses.
- A significant increase in associate degrees awarded, up from 113 in FY15-16 to 157 in FY16-17.
- Dedicated personnel for recruiting, for both USCL and Palmetto College degrees; with new staff members in place in for our new Enrollment Management officer position and a new dual enrollment director.
- Implementation of enrollment strategy recommendations such as new outreach to primary feeder high schools, as well as new initiatives to reach underserved populations, such as GED graduates; these efforts supplement traditional recruiting such as area high school visits.
- Continued outreach to students denied USC Columbia admission through the Denied Columbia Students Recruitment Initiative. Scholarship funds and awards increased this fiscal year as well, providing greater opportunities for students demonstrating academic excellence and/or financial need.
- Continued support services provided by academic advisors, the Academic Success and Writing Center, Counseling Services, University 101 Program, Office of Student Life, USC Connect and Graduation with Leadership Distinction, and Travel Study, as well as the campus TRiO Learning Resources Center, which serves first-generation students, economically challenged students and students with documented disabilities by offering academic support, tutoring, coordinating campus and community service activities and other retention and success efforts. Each of these student support services provide clear evidence of achievement towards the Statewide Enterprise Strategic Objectives in Education, Training, and Human Development.

|                     |   |                 |            |
|---------------------|---|-----------------|------------|
| <b>AGENCY NAME:</b> | <b>University of South Carolina Lancaster</b> |                 |            |
| <b>AGENCY CODE:</b> | <b>H37</b>                                    | <b>SECTION:</b> | <b>20E</b> |

## Strategic Planning Goal 2

### **Prepare students for the challenges and opportunities of the 21st century by offering a wide range of academic experiences and programs, taught by excellent faculty**

A major priority for all institutions of higher education must be to support and sustain students throughout their academic careers into successful careers or further studies. USCL has made enhancing educational experience to prepare graduates for the challenges and opportunities of the 21st century a major priority this year—indeed, every year—and in planning for next year as well.

Providing a range of academic offerings is critical to sustain USC Lancaster’s mission and core values. Palmetto College has provided outstanding opportunities for growth in academic offerings, allowing students to complete baccalaureate degrees both on and off our campus. Palmetto College currently offers thirteen baccalaureate degree completion programs in partnership with USC, USC senior campuses, and other Palmetto College campuses. USC Lancaster continues to lead the Palmetto College Campuses in enrollment in Palmetto College BLS and BOL degree programs.

In FY17-18, USCL also entered the early stages of partnerships with Lancaster County School District to offer evening classes at the current Indian Land High School; the campus is on track to offer 7 courses in Fall 2018, and we anticipate discussing this growth area further in our FY18-19 report.

Highlights for this area:

- Continued commitment to academic excellence through strong faculty and teaching excellence. Annual review procedures place a high value on teaching effectiveness. Faculty normally teach a 12-hour course load each semester. Courses are evaluated, and evaluations are reviewed by faculty peers and administration, to ensure that teaching quality remains high.
- Continued commitment to faculty support for remaining current in their respective disciplines. Our outstanding faculty disseminate scholarly work at conferences, publish in journals and books, and serve as reviewers of scholarship. USCL provides travel funding and research and productive scholarship funding in support of this work.
- 100% success the last five years in faculty tenure and promotion applications.
- In the 2017 calendar year, USCL faculty members disseminated 24 publications, including books, articles, and reviews and gave 65 presentations at local, regional, national, and even international venues.
- Celebrated the fifth anniversary of USCL’s Native American Studies Center, which drew 8429 visitors from the area and around the country. The Center offers world-class exhibits supported by the National Endowment for the Arts and houses the single largest collection of Catawba Indian pottery in existence.
- Expansion of the Graduation with Leadership Distinction (GLD) honors program, which students complete by fulfilling specific requirements related to leadership training and by participating in specific co-curricular experiences. The campus GLD director was on leave for part of the year so the number of graduates attaining this honor was down somewhat, but the program is back in full swing with expanded opportunities and a new travel study in the works as well.

|                     |   |                 |            |
|---------------------|---|-----------------|------------|
| <b>AGENCY NAME:</b> | <b>University of South Carolina Lancaster</b> |                 |            |
| <b>AGENCY CODE:</b> | <b>H37</b>                                    | <b>SECTION:</b> | <b>20E</b> |

- Continued support of educational opportunities and service in the community; for example, USCL works closely with area high schools through such programs as Honors Day and with the hosting of Junior Scholars Day for students in schools throughout the Olde English Consortium.
- Offered 345 community events, for organizations such as the J. Marion Sims Foundation, the Orton Family Foundation, Rotary International, and many more.
- These community education and wellness initiatives in addition to our strong support for student success clearly address the Statewide Enterprise Strategic Objectives of both Education, Training, and Human Development and Government and Citizens.

### **Strategic Planning Goal 3**

#### **Maintain campus infrastructure and financial stability to provide a well-equipped learning environment and strengthen financial condition, efficiency, and operations of USC Lancaster**

USC Lancaster has worked steadily the last several years to stabilize the financial condition and operational budget of the campus. In light of recent state appropriations and with recent drops in student enrollment, the campus has made long-term financial sustainability and efficiency major goals. The campus administration participates in quarterly budget meetings and the Dean retains a Budget Advisory Group to assist in monitoring budget issues.

The campus shifted several facilities management projects given a new allocation of deferred maintenance monies and the exciting opportunity to shift the management of the Gregory Health and Wellness Center to the Upper Palmetto YMCA. Campus performance measures reflect these new opportunities and projects, rather than the original measures outlined in FY16-17 report.

- Continued fiscal stewardship towards not only ending each fiscal year under budget, but also building reserves. This requires careful allocation of all revenue sources, which include tuition, the Palmetto College revenue sharing model, and potentially recurring parity funding and deferred maintenance monies. At year's end, the campus exceeded our carry-forward goal considerably, with a balance now of \$1,650,095 towards rebuilding the campus reserve funds to a recommended three months of campus operating expenses.
- Completed the final phase of renovations of the Gregory Health and Wellness Center.
- Completed the transfer of operations and management of the Gregory Health and Wellness Center to the Upper Palmetto YMCA. Since December 2017, when the transfer finalized, the Gregory Family YMCA has since nearly doubled memberships, with approximately 1900 members in March 2018.
- Continued partnership with the Educational Foundation of USC Lancaster, which works closely with the Office of Advancement to identify and cultivate sources of external financial support to meet the growing needs of the campus.
- Providing continued availability to the community for events, which gives the campus visibility and also builds revenue.

|                     |   |                 |            |
|---------------------|---|-----------------|------------|
| <b>AGENCY NAME:</b> | <b>University of South Carolina Lancaster</b> |                 |            |
| <b>AGENCY CODE:</b> | <b>H37</b>                                    | <b>SECTION:</b> | <b>20E</b> |

USC Lancaster is most grateful for the generous support of the South Carolina State Government and for the many partners and donors in our community and beyond who allow the campus to provide excellent facilities to students and community members. USCL strives not only to be a responsible steward of the financial resources of our students, community, and state, but also in return to contribute strongly back.

## **Subsections I and II: Risk Assessment and Mitigation Analysis, and Restructuring Recommendations**

Since its establishment in 1959, USC Lancaster has more than fulfilled its mission of educating the citizens of South Carolina. The campus is routinely subject to accreditation, review, and audits, in addition to consulting with external agencies to identify potential negative impacts on the public and to avoid those. Finally, while USCL is a separately funded state agency, our membership in the USC System assures appropriate resources and strategies are in place to address failure to attain goals and objectives. This agency has no restructuring recommendations at this time.

**AGENCY NAME:**

**University of South Carolina Lancaster**

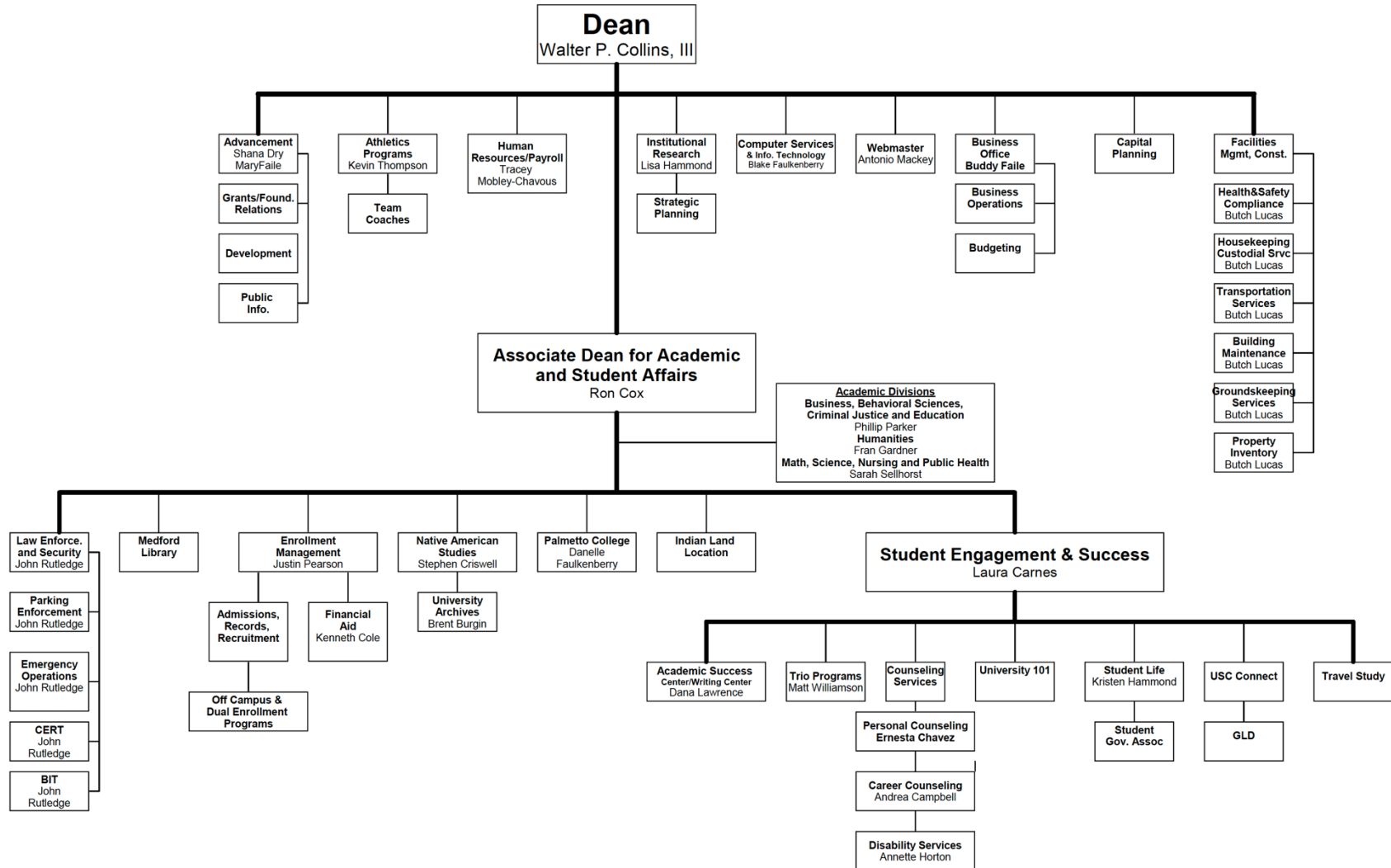
**AGENCY CODE:**

**H37**

**SECTION:**

**20E**

## USC Lancaster Organization Chart





|              |  |          |     |
|--------------|--|----------|-----|
| Agency Name: | UNIVERSITY OF SOUTH CAROLINA - LANCASTER |          |     |
| Agency Code: | H370                                     | Section: | 20E |

Fiscal Year 2017-2018  
Accountability Report

Strategic Planning and Performance Measurement Template

| Statewide Enterprise Strategic Objective   | Type | Item # |          |         | Description  | 2017-18        |                |         | Time Applicable    | Data Source and Availability  | Calculation Method   | Meaningful Use of Measure  |
|--|------|--------|----------|---------|--|----------------|----------------|---------|--------------------|---|--|--|
|  |      | Goal   | Strategy | Measure |  | Base           | Target         | Actual  |                    |   |  |  |
| Education, Training, and Human Development | G    | 1      |          |         | Increase enrollment, retention, and graduation rates in service of providing an outstanding educational experience to USC Lancaster students |                |                |         |                    |   |  |  |
|  | S    | 1.1    |          |         | Increase and enhance recruitment efforts through active recruiting and admissions and enrollment support                                     |                |                |         |                    |   |  |  |
|  | M    |        |          | 1.1.1   | Headcount (Registered Students)  | 1845           | 1880           | 1910    | 7/1/2017-6/30/2018 | USC Office of Institutional Research, Assessment, and Analytics (OIRAA)   | Fall semester numbers  | Provide an outstanding educational experience by supporting students in all academic areas, from admissions to classroom success to graduation |
|  | M    |        |          | 1.1.2   | New freshmen applications  | 700            | 750            | 744     | 7/1/2017-6/30/2018 | Enrollment Management, internal   | Fall semester numbers  | Provide an outstanding educational experience by supporting students in all academic areas, from admissions to classroom success to graduation |
|  | M    |        |          | 1.1.3   | Yield rate (conversion of applicants into enrolled students)   | 67%            | 50%            | 72%     | 7/1/2017-6/30/2018 | Enrollment Management, internal   | Fall semester numbers (new registrations / new applications)   | Provide an outstanding educational experience by supporting students in all academic areas, from admissions to classroom success to graduation |
|  | M    |        |          | 1.1.4   | Recruiting events held on or off campus  | 87             | 80             | 97      | 7/1/2017-6/30/2018 | Enrollment Management, internal   | Actual count   | Provide an outstanding educational experience by supporting students in all academic areas, from admissions to classroom success to graduation |
|  | S    | 1.2    |          |         | Increase and enhance retention rates through low student-faculty classroom ratios, tutoring, and other student support services              |                |                |         |                    |   |  |  |
|  | M    |        |          | 1.2.1   | Retention of first-time, full-time, degree seeking freshmen  | 61.6%          | 62.0%          | 62.0%   | 7/1/2017-6/30/2018 | OIRAA   | Students retained from Fall to Fall  | Provide students every opportunity for academic success and degree completion  |
|  | M    |        |          | 1.2.2   | Faculty-to-student ratio   | new 18-19 goal | new 18-19 goal | 1:15.83 | 7/1/2017-6/30/2018 | OIRAA   | A ratio of full-time equivalent students (full-time plus 1/3 part time) to full-time equivalent instructional faculty (full time plus 1/3 part time), Fall semester numbers  | Provide students every opportunity for academic success and degree completion by providing opportunities for significant individual attention  |
|  | M    |        |          | 1.2.3   | Scholarship funding, including (1.2.3.A) Funds established for student scholarships in the Educational Foundation of USC Lancaster           | 134            | 137            | 134     | 7/1/2017-6/30/2018 | Educational Foundation of USC Lancaster, internal   | Cumulative number of individual scholarship funds  | Provide affordable education to students   |
|  | -    |        |          |         | (1.2.3.B) Students with scholarships awarded from the Educational Foundation of USC Lancaster  | 147            | 154            | 165     | 7/1/2017-6/30/2018 | Financial Aid, internal (based on Fall semester projections)  | Total number of enrolled students (including those in 2nd year of existing awards)   | Provide affordable education to students   |
|  | -    |        |          |         | (1.2.3.C) Scholarships awarded from or continued by the Educational Foundation of USC Lancaster  | 187            | 195            | 197     | 7/1/2017-6/30/2018 | Financial Aid, internal (based on Fall semester projections)  | Total number of scholarships awarded (including 2nd year of existing awards)   | Provide affordable education to students   |
|  | M    |        |          | 1.2.4   | Tutoring sessions held in the Academic Success Center  | 917            | 1000           | 895     | 7/1/2017-6/30/2018 | ASC Director, Internal  | Actual count   | Provide students every opportunity for academic success and degree completion  |
|  | S    | 1.3    |          |         | Increase and enhance graduation rates through low student-faculty classroom ratios, tutoring and other student support services              |                |                |         |                    |   |  |  |
|  | M    |        |          | 1.3.1   | Associate degrees awarded  | 113            | 110            | 157     | 7/1/2016-6/302017  | OIRAA (most current data available)   | Total number for the fiscal year   | Provide an outstanding educational experience by supporting students in all academic areas, from admissions to classroom success to graduation |
|  | M    |        |          | 1.3.2   | Graduation Rates of First-time, Full-time Degree-Seeking Undergraduates  | 19.1%          | 19.0%          | 15.8%   | 7/1/2017-6/30/2018 | CHE report, Graduation Rates, South Carolina Higher Education Statistical Abstract 2017   | CHE calculation. Fall 2014 cohort. Percentage of cohort graduating within 150% time of normal program time (3 years).  | Provide students every opportunity for academic success and degree completion  |
|  | M    |        |          | 1.3.3   | Success Rates of First-time, Full-Time Degree-Seeking Undergraduates **  | 47.2%          | 56.0%          | 53.7%   | 7/1/2017-6/30/2018 | CHE report, South Carolina Higher Education Statistical Abstract 2017, 2013 cohort (* A transition to USC's enterprise student enrollment management software resulted in a coding error in which transfer students were not included in success rates; obtaining accurate figures is an institutional priority.) | Percentage of cohort graduating within 150% time of normal program time (3 years) and those who as of 150% of program time have transferred to another institution or have continued to be enrolled the term following 150% of program time. | Provide students every opportunity for academic success and degree completion  |

| Strategic Planning and Performance Measurement Template |      |        |  |   |                |                |                |                    |   |   |   |                           |
|---|------|--------|--|---|----------------|----------------|----------------|--------------------|---|---|---|---------------------------|
| Statewide Enterprise Strategic Objective                | Type | Item # |  |   | Description    | 2017-18        |                |                    | Time Applicable                         | Data Source and Availability  | Calculation Method  | Meaningful Use of Measure |
|   |      | Goal   | Strategy   | Measure   |                | Base           | Target         | Actual             |   |   |   |                           |
| Education, Training, and Human Development              | G    | 2      | Prepare students for the challenges and opportunities of the 21st century by offering a wide range of academic experiences and programs, taught by excellent faculty                                 |   |                |                |                |                    |   |   |   |                           |
|   | S    | 2.1    | Offer a variety of educational options to students   |   |                |                |                |                    |   |   |   |                           |
|   | M    |        | 2.1.1  | Palmetto College Student Enrollment in BOL and BLS at USC Lancaster   | 119            | 120            | 107            | 7/1/2017-6/30/2018 | Enrollment Services, Palmetto College   | Fall semester numbers   | Provide students access to a range of academic programs   |                           |
|   | M    |        | 2.1.2  | Students with Graduation with Leadership Distinction (GLD) honors   | 14             | 8              | 3              | 7/1/2017-6/30/2018 | Academic Affairs, Internal              | Actual number listed for commencement   | Provide students access to a range of academic programs   |                           |
|   | M    |        | 2.1.3  | Courses offered at Indian Land site   | new 18-19 goal | new 18-19 goal | new 18-19 goal | 7/1/2017-6/30/2018 | Academic Affairs, Internal              | Actual count  | Provide students access to a range of academic programs   |                           |
|   | M    |        | 2.1.4  | Enrollment headcount for upper-division BSN program   | 46             | 48             | 48             | 7/1/2017-6/30/2018 | BSN Program Director, internal          | Actual headcount. Maximum number of students is 48, due to lack of more clinical opportunities. | Provide students access to a range of academic programs   |                           |
|   | S    | 2.2    | Recruit and support excellent faculty for classroom instruction, by providing a good instructional environment and professional development resources in support of faculty teaching and scholarship |   |                |                |                |                    |   |   |   |                           |
|   | M    |        | 2.2.1  | Number of full-time faculty   | 57             | 60             | 57             | 7/1/2017-6/30/2018 | OIRAA                                   | Fall semester numbers   | Provide students every opportunity for academic success and degree completion by providing sufficient coverage for classroom instruction            |                           |
|   | M    |        | 2.2.2  | Normal teaching load of full-time faculty per academic year (redefined teaching load available for scholarly-active faculty)    | 8              | 8              | 8              | 7/1/2017-6/30/2018 | Academic Affairs, Internal              | Internal campus policy, n/a   | Provide students every opportunity for academic success and degree completion by providing sufficient coverage for classroom instruction            |                           |
|   | M    |        | 2.2.3  | Funding for USC Lancaster Research and Productive Scholarship Award Program and travel budget for faculty scholarship           | \$70,000       | \$70,000       | \$70,000       | 7/1/2017-6/30/2018 | Academic Affairs, Internal              | Actual amount   | Provide students every opportunity for academic success and degree completion by ensuring faculty have continued access to professional development |                           |
|   | S    | 2.3    | Develop opportunities for campus and community engagement to benefit both students and community members   |   |                |                |                |                    |   |   |   |                           |
|   | M    |        | 2.3.1  | Visits to USC Lancaster's Native American Studies Center  | 7444           | 8000           | 8429           | 7/1/2017-6/30/2018 | NASC Visitor Coordinator, internal      | Actual number   | Provide students and community members access to unique educational opportunities   |                           |
|   | M    |        | 2.3.2  | Campus and community outreach events by Medford Library   | 22             | 15             | 21             | 7/1/2017-6/30/2018 | Library, internal                       | Actual number   | Provide students and community members access to unique educational opportunities   |                           |
|   | M    |        | 2.3.3  | Community events offered on USC Lancaster campus  | 327            | 330            | 345            | 7/1/2017-6/30/2018 | Facilities Rental Coordinator, internal | Actual number   | Provide students and community members access to unique educational opportunities   |                           |
| Public Infrastructure and Economic Development          | G    | 3      | Maintain campus infrastructure and financial stability to provide a well-equipped learning environment and strengthen financial condition, efficiency, and operations of USC Lancaster               |   |                |                |                |                    |   |   |   |                           |
|   | S    | 3.1    | Strengthen USC Lancaster's financial condition through efficient operations and careful budgeting  |   |                |                |                |                    |   |   |   |                           |
|   | M    |        | 3.1.1  | Fiscal year ended under budget for expenditures   | yes            | yes            | yes            | 7/1/2017-6/30/2018 | Budget office, internal                 | n/a   | Strengthen the financial condition, efficiency, and operations of USCL  |                           |
|   | M    |        | 3.1.2  | USC Lancaster reserve fund carry-forward balance  | \$1,206,345    | \$1,456,345    | \$1,650,095    | 7/1/2017-6/30/2018 | Budget office, internal                 | Amount held in Reserve Fund   | Strengthen the financial condition, efficiency, and operations of USCL  |                           |
|   | S    | 3.2    | Maintain and improve USC Lancaster's physical plant to provide a well-equipped learning environment, sustain enrollment growth, and enhance community engagement                                     |   |                |                |                |                    |   |   |   |                           |
|   | M    |        | 3.2.1  | Complete Gregory Health and Wellness Center Phase III renovations to improve exercise facilities (\$640,000 FY17 appropriation) | in-progress    | complete       | complete       | 7/1/2017-6/30/2018 | Facilities Management, internal         | Completion of renovation project  | Maintain and improve USCL's physical plant to sustain enrollment growth, expand public services, and provide a well-equipped learning environment   |                           |
|   | M    |        | 3.2.2  | Complete transfer of operations and management of the Gregory Health and Wellness Center to the Upper Palmetto YMCA             | in-progress    | complete       | complete       | 7/1/2017-6/30/2018 | Facilities Management, internal         | Completion of project   | Maintain and improve USCL's physical plant to sustain enrollment growth, expand public services, and provide a well-equipped learning environment   |                           |

Agency Name: UNIVERSITY OF SOUTH CAROLINA - LANCASTER

Fiscal Year 2017-2018  
Accountability Report

Agency Code: H370      Section: 20E

Strategic Planning and Performance Measurement Template

| Statewide Enterprise Strategic Objective | Type | Item # |          |         | Description  | 2017-18        |                |                | Time Applicable    | Data Source and Availability    | Calculation Method    | Meaningful Use of Measure   |
|--|------|--------|----------|---------|--|----------------|----------------|----------------|--------------------|---------------------------------|-----------------------|---|
|  |      | Goal   | Strategy | Measure |  | Base           | Target         | Actual         |                    |                                 |                       |   |
|  | M    |        |          | 3.2.3   | Make progress on two-year deferred maintenance projects (\$2.3 million deferred maintenance allocation); projects include Gregory natatorium solarium and HVAC; Hubbard roof; Bradley physics lab conversion | new 18-20 goal | new 18-20 goal | new 18-20 goal | 7/1/2017-6/30/2018 | Facilities Management, internal | Completion of project | Maintain and improve USCL's physical plant to sustain enrollment growth, expand public services, and provide a well-equipped learning environment |

|              |  |          |     |
|--------------|--|----------|-----|
| Agency Name: | UNIVERSITY OF SOUTH CAROLINA - LANCASTER |          |     |
| Agency Code: | H370                                     | Section: | 20E |

Fiscal Year 2018-2019  
Accountability Report

Strategic Planning and Performance Measurement Template

| Statewide Enterprise Strategic Objective   | Type | Item # |          |         | Description  | 2018-19 |         |                    | Time Applicable   | Data Source and Availability   | Calculation Method   | Meaningful Use of Measure |
|--|------|--------|----------|---------|--|---------|---------|--------------------|---|--|--|---------------------------|
|  |      | Goal   | Strategy | Measure |  | Base    | Target  | Actual             |   |  |  |                           |
| Education, Training, and Human Development | G    | 1      |          |         | Increase enrollment, retention, and graduation rates in service of providing an outstanding educational experience to USC Lancaster students |         |         |                    |   |  |  |                           |
|  | S    | 1.1    |          |         | Increase and enhance recruitment efforts through active recruiting and admissions and enrollment support                                     |         |         |                    |   |  |  |                           |
|  | M    |        |          | 1.1.1   | Headcount (Registered Students)  | 1910    | 1740    | 7/1/2018-6/30/2019 | USC Office of Institutional Research, Assessment, and Analytics (OIRAA)   | Fall semester numbers  | Provide an outstanding educational experience by supporting students in all academic areas, from admissions to classroom success to graduation |                           |
|  | M    |        |          | 1.1.2   | New freshmen applications  | 744     | 750     | 7/1/2018-6/30/2019 | Enrollment Management, internal   | Fall semester numbers  | Provide an outstanding educational experience by supporting students in all academic areas, from admissions to classroom success to graduation |                           |
|  | M    |        |          | 1.1.3   | Yield rate (conversion of applicants into enrolled students)   | 72%     | 70%     | 7/1/2018-6/30/2019 | Enrollment Management, internal   | Fall semester numbers (new registrations / new applications)   | Provide an outstanding educational experience by supporting students in all academic areas, from admissions to classroom success to graduation |                           |
|  | M    |        |          | 1.1.4   | Recruiting events held on or off campus  | 97      | 100     | 7/1/2018-6/30/2019 | Enrollment Management, internal   | Actual count   | Provide an outstanding educational experience by supporting students in all academic areas, from admissions to classroom success to graduation |                           |
|  | S    | 1.2    |          |         | Increase and enhance retention rates through low student-faculty classroom ratios, tutoring, and other student support services              |         |         |                    |   |  |  |                           |
|  | M    |        |          | 1.2.1   | Retention of first-time, full-time, degree seeking freshmen  | 62.0%   | 62.0%   | 7/1/2018-6/30/2019 | OIRAA   | Students retained from Fall to Fall  | Provide students every opportunity for academic success and degree completion  |                           |
|  | M    |        |          | 1.2.2   | Faculty-to-student ratio   | 1:15.83 | 1:15.50 | 7/1/2018-6/30/2019 | OIRAA   | A ratio of full-time equivalent students (full-time plus 1/3 part time) to full-time equivalent instructional faculty (full time plus 1/3 part time), Fall semester numbers  | Provide students every opportunity for academic success and degree completion by providing opportunities for significant individual attention  |                           |
|  | M    |        |          | 1.2.3   | Scholarship funding, including (1.2.3.A) Funds established for student scholarships in the Educational Foundation of USC Lancaster           | 134     | 137     | 7/1/2018-6/30/2019 | Educational Foundation of USC Lancaster, internal   | Cumulative number of individual scholarship funds  | Provide affordable education to students   |                           |
|  | -    |        |          |         | (1.2.3.B) Students with scholarships awarded from the Educational Foundation of USC Lancaster  | 165     | 167     | 7/1/2018-6/30/2019 | Financial Aid, internal (based on Fall semester projections)  | Total number of enrolled students (including those in 2nd year of existing awards)   | Provide affordable education to students   |                           |
|  | -    |        |          |         | (1.2.3.C) Scholarships awarded from or continued by the Educational Foundation of USC Lancaster  | 197     | 200     | 7/1/2018-6/30/2019 | Financial Aid, internal (based on Fall semester projections)  | Total number of scholarships awarded (including 2nd year of existing awards)   | Provide affordable education to students   |                           |
|  | M    |        |          | 1.2.4   | Tutoring sessions held in the Academic Success Center  | 895     | 950     | 7/1/2018-6/30/2019 | ASC Director, Internal  | Actual count   | Provide students every opportunity for academic success and degree completion  |                           |
|  | S    | 1.3    |          |         | Increase and enhance graduation rates through low student-faculty classroom ratios, tutoring and other student support services              |         |         |                    |   |  |  |                           |
|  | M    |        |          | 1.3.1   | Associate degrees awarded  | 157     | 125     | 7/1/2017-6/30-2018 | OIRAA   | Total number for the fiscal year   | Provide an outstanding educational experience by supporting students in all academic areas, from admissions to classroom success to graduation |                           |
|  | M    |        |          | 1.3.2   | Graduation Rates of First-time, Full-time Degree-Seeking Undergraduates  | 15.8%   | 19.0%   | 7/1/2018-6/30/2019 | CHE report, Graduation Rates, South Carolina Higher Education Statistical Abstract 2018, Fall 2015 cohort   | CHE calculation. Percentage of cohort graduating within 150% time of normal program time (3 years).  | Provide students every opportunity for academic success and degree completion  |                           |
|  | M    |        |          | 1.3.3   | Success Rates of First-time, Full-Time Degree-Seeking Undergraduates **  | 53.7%   | 56.0%   | 7/1/2018-6/30/2019 | CHE report, South Carolina Higher Education Statistical Abstract 2018, 2014 cohort (* A transition to USC's enterprise student enrollment management software resulted in a coding error in which transfer students were not included in success rates; obtaining accurate figures is an institutional priority.) | Percentage of cohort graduating within 150% time of normal program time (3 years) and those who as of 150% of program time have transferred to another institution or have continued to be enrolled the term following 150% of program time. | Provide students every opportunity for academic success and degree completion  |                           |

|              |  |          |     |
|--------------|--|----------|-----|
| Agency Name: | UNIVERSITY OF SOUTH CAROLINA - LANCASTER |          |     |
| Agency Code: | H370                                     | Section: | 20E |

Fiscal Year 2018-2019  
Accountability Report

Strategic Planning and Performance Measurement Template

| Statewide Enterprise Strategic Objective       | Type | Item # |          |         | Description   | 2018-19        |                           |        | Time Applicable    | Data Source and Availability            | Calculation Method  | Meaningful Use of Measure   |
|--|------|--------|----------|---------|---|----------------|---------------------------|--------|--------------------|---|---|---|
|  |      | Goal   | Strategy | Measure |   | Base           | Target                    | Actual |                    |   |   |   |
| Education, Training, and Human Development     | G    | 2      |          |         | Prepare students for the challenges and opportunities of the 21st century by offering a wide range of academic experiences and programs, taught by excellent faculty  |                |                           |        |                    |   |   |   |
|  | S    | 2.1    |          |         | Offer a variety of educational options to students  |                |                           |        |                    |   |   |   |
|  | M    |        |          | 2.1.1   | Palmetto College Student Enrollment in BOL and BLS at USC Lancaster   | 107            | 118                       |        | 7/1/2018-6/30/2019 | Enrollment Services, Palmetto College   | Fall semester numbers   | Provide students access to a range of academic programs   |
|  | M    |        |          | 2.1.2   | Students with Graduation with Leadership Distinction (GLD) honors   | 3              | 8                         |        | 7/1/2018-6/30/2019 | Academic Affairs, Internal              | Actual number listed for commencement   | Provide students access to a range of academic programs   |
|  | M    |        |          | 2.1.3   | Courses offered at Indian Land site   | 0              | 7                         |        | 7/1/2018-6/30/2019 | Academic Affairs, Internal              | Actual count  | Provide students access to a range of academic programs   |
|  | M    |        |          | 2.1.4   | Enrollment headcount for upper-division BSN program   | 48             | 48                        |        | 7/1/2018-6/30/2019 | BSN Program Director, internal          | Actual headcount. Maximum number of students is 48, due to lack of more clinical opportunities. | Provide students access to a range of academic programs   |
|  | S    | 2.2    |          |         | Recruit and support excellent faculty for classroom instruction, by providing a good instructional environment and professional development resources in support of faculty teaching and scholarship                |                |                           |        |                    |   |   |   |
|  | M    |        |          | 2.2.1   | Number of full-time faculty   | 57             | 59                        |        | 7/1/2018-6/30/2019 | OIRAA                                   | Fall semester numbers   | Provide students every opportunity for academic success and degree completion by providing sufficient coverage for classroom instruction            |
|  | M    |        |          | 2.2.2   | Normal teaching load of full-time faculty per academic year (redefined teaching load available for scholarly-active faculty)  | 8              | 8                         |        | 7/1/2018-6/30/2019 | Academic Affairs, Internal              | Internal campus policy, n/a   | Provide students every opportunity for academic success and degree completion by providing sufficient coverage for classroom instruction            |
|  | M    |        |          | 2.2.3   | Funding for USC Lancaster Research and Productive Scholarship Award Program and travel budget for faculty scholarship   | \$70,000       | \$70,000                  |        | 7/1/2018-6/30/2019 | Academic Affairs, Internal              | Actual amount   | Provide students every opportunity for academic success and degree completion by ensuring faculty have continued access to professional development |
|  | S    | 2.3    |          |         | Develop opportunities for campus and community engagement to benefit both students and community members  |                |                           |        |                    |   |   |   |
|  | M    |        |          | 2.3.1   | Visits to USC Lancaster's Native American Studies Center  | 8429           | 8500                      |        | 7/1/2018-6/30/2019 | NASC Visitor Coordinator, internal      | Actual number   | Provide students and community members access to unique educational opportunities   |
|  | M    |        |          | 2.3.2   | Campus and community outreach events by Medford Library   | 21             | 20                        |        | 7/1/2018-6/30/2019 | Library, internal                       | Actual number   | Provide students and community members access to unique educational opportunities   |
|  | M    |        |          | 2.3.3   | Community events offered on USC Lancaster campus  | 345            | 350                       |        | 7/1/2018-6/30/2019 | Facilities Rental Coordinator, internal | Actual number   | Provide students and community members access to unique educational opportunities   |
| Public Infrastructure and Economic Development | G    | 3      |          |         | Maintain campus infrastructure and financial stability to provide a well-equipped learning environment and strengthen financial condition, efficiency, and operations of USC Lancaster                              |                |                           |        |                    |   |   |   |
|  | S    | 3.1    |          |         | Strengthen USC Lancaster's financial condition through efficient operations and careful budgeting   |                |                           |        |                    |   |   |   |
|  | M    |        |          | 3.1.1   | Fiscal year ended under budget for expenditures   | yes            | yes                       |        | 7/1/2018-6/30/2019 | Budget office, internal                 | n/a   | Strengthen the financial condition, efficiency, and operations of USCL  |
|  | M    |        |          | 3.1.2   | USC Lancaster reserve fund carry-forward balance  | \$1,650,095    | \$1,900,095               |        | 7/1/2018-6/30/2019 | Budget office, internal                 | Amount held in Reserve Fund   | Strengthen the financial condition, efficiency, and operations of USCL  |
|  | S    | 3.2    |          |         | Maintain and improve USC Lancaster's physical plant to provide a well-equipped learning environment, sustain enrollment growth, and enhance community engagement  |                |                           |        |                    |   |   |   |
|  | M    |        |          | 3.2.1   | Make progress on two-year deferred maintenance projects (\$2.3 million deferred maintenance allocation): projects include Gregory YMCA natatorium, solarium, and HVAC; Hubbard roof; Bradley physics lab conversion | new 18-20 goal | progress on two-year goal |        | 7/1/2018-6/30/2020 | Facilities Management, internal         | Completion of project   | Maintain and improve USCL's physical plant to sustain enrollment growth, expand public services, and provide a well-equipped learning environment   |

|              |  |          |     |
|--------------|--|----------|-----|
| Agency Name: | UNIVERSITY OF SOUTH CAROLINA - LANCASTER |          |     |
| Agency Code: | H370                                     | Section: | 20E |

Fiscal Year 2017-2018  
Accountability Report

| Program Template   |  |                                  |              |              |              |                                     |              |              |               |                       |
|--|--|----------------------------------|--------------|--------------|--------------|-------------------------------------|--------------|--------------|---------------|-----------------------|
| Program/Title  | Purpose  | FY 2017-18 Expenditures (Actual) |              |              |              | FY 2018-19 Expenditures (Projected) |              |              |               | Associated Measure(s) |
|  |  | General                          | Other        | Federal      | TOTAL        | General                             | Other        | Federal      | TOTAL         |                       |
| I.A. Unrestricted E&G  | Activities that directly support the primary mission of the University to educate the state's diverse citizens through teaching, research and creative activity and service. Current fund resources received by an institution that have no limitations or stipulations placed on them by external agencies or donors, and that have not been set aside for loans, endowments, or plant. These resources are normally derived from state appropriations, student fees, and institutional revenues. | \$ 1,971,096                     | \$ 3,864,909 | \$ -         | \$ 5,836,005 | \$ 2,234,012                        | \$ 8,106,775 | \$ -         | \$ 10,340,787 |                       |
| I.B. Restricted E&G  | Activities that directly support the primary mission of the University to educate the state's diverse citizens through teaching, research and creative activity and service. Current fund resources received by an institution that have limitations or stipulations placed on their use by external agencies or donors. These resources are normally derived from gifts, grants, and contracts and used predominantly for research and student scholarship activities.                            | \$ -                             | \$ 3,555,415 | \$ 2,575,293 | \$ 6,130,708 | \$ -                                | \$ 3,648,703 | \$ 3,988,268 | \$ 7,636,971  |                       |
| II. Auxiliary Services   | Self-supporting activities that exist to furnish goods and services to students, faculty, or staff, and charge a fee directly related to the cost of the goods or services. These activities include student health, student housing, food service, bookstore, vending and concessions, athletics, parking, and other services.  | \$ -                             | \$ -         | \$ -         | \$ -         | \$ -                                | \$ 15,000    | \$ -         | \$ 15,000     |                       |
| III. C. Employee Benefits: State Employer Contributions  | Fringe Benefits associated with Salaries reflected in the figures and categories above. Includes State Retirement, FICA, State Health Plan Premiums, Unemployment Compensation and Workers Compensation.   | \$ 484,974                       | \$ 1,757,805 | \$ 89,033    | \$ 2,331,812 | \$ 521,108                          | \$ 2,013,975 | \$ 101,780   | \$ 2,636,863  |                       |
| Total  |  |                                  |              |              | \$ -         | \$ -                                |              |              |               |                       |
|  |  |                                  |              |              | \$ -         | \$ -                                |              |              |               |                       |
| FY 2017-18 expenditures reported as prepared for Comprehensive Annual Financial Report. FY18 financials are still under review and not final as of the due date for this report. Year-end Financial Statements will be provided to Comptroller General by no later than October 1 in accordance with Proviso 117.58 of the FY19 State Appropriation Act. |  |                                  |              |              | \$ -         | \$ -                                |              |              |               |                       |
| FY 2018-19 projected based on FY 2018-19 State Appropriation Act.  |  |                                  |              |              | \$ -         | \$ -                                |              |              |               |                       |

|              |  |          |     |
|--------------|--|----------|-----|
| Agency Name: | UNIVERSITY OF SOUTH CAROLINA - LANCASTER |          |     |
| Agency Code: | H370                                     | Section: | 20E |

Fiscal Year 2017-2018  
Accountability Report

| Legal Standards Template |   |              |             |  |  |   |   |   |
|--------------------------|---|--------------|-------------|--|--|---|---|---|
| Item #                   | Law Number  | Jurisdiction | Type of Law | Statutory Requirement and/or Authority Granted   | Does this law specify who your agency must or may serve? (Y/N) | Does the law specify a product or service your agency must or may provide?      | <i>If yes, what type of service or product?</i>                                 | <i>If other service or product, please specify what service or product.</i> |
| 1                        | 59-103-15 through 330                                   | State        | Statute     | Addresses mission, governance and scope of operation of higher education institutions in the state.  | Yes  | Yes   | Other service or product our agency must/may provide                            | Provide courses, degrees, service   |
| 2                        | Act No. 126 of the 1959 Session of the General Assembly | State        | Statute     | Establishment of the Lancaster County Commission for Higher Education. Grants authority over higher education in Lancaster and adjacent areas to the Commission  | Yes  | Yes   | Board, commission, or committee on which someone from our agency must/may serve |   |
| 3                        | § 1-1-810 of SC Code of Laws                            | State        | Statute     | Annual accountability report to be submitted to the Govenor and General Assembly   | No   | Yes   | Report our agency must/may provide  |   |
| 4                        | § 1-1-820 of SC Code of Laws                            | State        | Statute     | Required content of annual accountability reports  | No   | Yes   | Report our agency must/may provide  |   |
| 5                        | § 1-1-550 of SC Code of Laws                            | State        | Statute     | Qualified honorably discharged veterans have preference for employment   | No   | No - But relates to manner in which one or more agency deliverables is provided |   |   |
| 6                        | § 11-35 of SC Code of Laws                              | State        | Statute     | Specifies procedures for procurement of goods and services   | Yes  | Yes   | Other service or product our agency must/may provide                            | Procurement Services  |
| 7                        | § 59-26 of SC Code of Laws                              | State        | Statute     | Establishes requirements and standards relating to the teacher education programs  | Yes  | Yes   | Other service or product our agency must/may provide                            | Teacher ed programs   |
| 8                        | § 59-101 of SC Code of Laws                             | State        | Statute     | Statutory recognition of colleges and institutions of higher learning  | Yes  | Yes   | Other service or product our agency must/may provide                            | Teaching, research and service  |
| 9                        | § 59-102 of SC Code of Laws                             | State        | Statute     | Statutory requirements for student athletes  | Yes  | Yes   | Other service or product our agency must/may provide                            | Student and athletic services   |
| 10                       | § 59-103 of SC Code of Laws                             | State        | Statute     | Establishment of the State Commission on Higher Education with authority over public supported higher education in the State   | No   | No - But relates to manner in which one or more agency deliverables is provided |   |   |
| 11                       | § 59-104 of SC Code of Laws                             | State        | Statute     | Meeting of admissions pre-requisites, Palmetto Scholarship program, competitive grants, Governor's Professor of the Year recognition, endowed professorship programs, accountability through assessment and planning, institutional effectiveness requirements | Yes  | Yes   | Report our agency must/may provide  |   |
| 12                       | § 59-105 of SC Code of Laws                             | State        | Statute     | Statutory requirements for a comprehensive sexual assault policy to address prevention and awareness of sexual assault   | Yes  | No - But relates to manner in which one or more agency deliverables is provided |   |   |
| 13                       | § 59-106 of SC Code of Laws                             | State        | Statute     | Statutory requirements for inclusion of information regarding registered sex offenders in annual security reports  | Yes  | Yes   | Report our agency must/may provide  |   |
| 14                       | § 59-107 of SC Code of Laws                             | State        | Statute     | Statutory requirements regarding remittance and application of tuition fees for permanent improvements and other expenses, regulations for issuance of State institution bonds   | No   | Yes   | Other service or product our agency must/may provide                            | Business/Accounting services  |
| 15                       | § 59-110 of SC Code of Laws                             | State        | Statute     | Statutory requirements for incentives to retain and attract new nurse faculty and to provide technology to increase accessibility to clinical education needs  | Yes  | Yes   | Other service or product our agency must/may provide                            | HR / Payroll services   |

|    |  |       |         |  |     |  |  |  |
|----|--|-------|---------|--|-----|--|--|--|
| 16 | § 59-111 of SC Code of Laws            | State | Statute | State scholarships and loan programs   | Yes | Yes  | Other service or product our agency must/may provide | Financial Aid and Business/Accounting services |
| 17 | § 59-112 of SC Code of Laws            | State | Statute | Requirements for determination of tuition and fee rates and abatements   | Yes | Yes  | Other service or product our agency must/may provide | Business/Accounting services                   |
| 18 | § 59-113 of SC Code of Laws            | State | Statute | Requirements for tuition grants  | Yes | Yes  | Other service or product our agency must/may provide | Financial Aid and Business/Accounting services |
| 19 | § 59-114 of SC Code of Laws            | State | Statute | National Guard College Assistance requirements   | Yes | Yes  | Other service or product our agency must/may provide | Financial Aid and Business/Accounting services |
| 20 | § 59-115 of SC Code of Laws            | State | Statute | Authority and requirements for state student loans   | Yes | Yes  | Other service or product our agency must/may provide | Financial Aid and Business/Accounting services |
| 21 | § 59-116 of SC Code of Laws            | State | Statute | Authority and requirements for campus police   | Yes | Yes  | Other service or product our agency must/may provide | Campus Police                                  |
| 22 | § 59-117 of SC Code of Laws            | State | Statute | Statutory authority for the University of South Carolina and its governance by a board of trustees   | No  | Yes  | Other service or product our agency must/may provide | Research, Teaching and Public Service          |
| 23 | § 59-118 of SC Code of Laws            | State | Statute | Statutory requirements over academic endowments  | Yes | Yes  | Other service or product our agency must/may provide | Business/Accounting services                   |
| 24 | § 59-142 of SC Code of Laws            | State | Statute | Statutory authority and requirements for state need-based grants   | Yes | Yes  | Other service or product our agency must/may provide | Financial Aid and Business/Accounting services |
| 25 | § 59-143 of SC Code of Laws            | State | Statute | Establishment of a state educational endowment to fund grants and scholarship programs   | Yes | Yes  | Other service or product our agency must/may provide | Financial Aid and Business/Accounting services |
| 26 | § 59-147 of SC Code of Laws            | State | Statute | Requirements for higher education revenue bonds  | No  | Yes  | Other service or product our agency must/may provide | Business/Accounting services                   |
| 27 | § 59-149 of SC Code of Laws            | State | Statute | Authorization and requirements for the LIFE Scholarship program  | Yes | Yes  | Other service or product our agency must/may provide | Financial Aid and Business/Accounting services |
| 28 | § 59-150 of SC Code of Laws            | State | Statute | Use of Lottery funds in support of higher education  | Yes | No - But relates to sources of funding for one or more agency deliverables |  |  |
| 29 | § 9-1 of SC Code of Laws               | State | Statute | Retirement system for employees  | No  | Yes  | Distribute funding to another entity                 |  |
| 30 | § 13-17 of SC Code of Laws             | State | Statute | Establishment and requirements of the South Carolina Research Authority to facilitate research activities at institutions of higher education  | No  | Yes  | Other service or product our agency must/may provide | Research, activities                           |
| 31 | § 59-101-210 (A)(1) of SC Code of Laws | State | Statute | Requires public colleges and universities to maintain a report of violations of the institution's Conduct of Student Organizations by fraternity and sorority organizations formally affiliated with the institution | Yes | Yes  | Report our agency must/may provide                   |  |



|    |   |       |            |  |     |   |  |  |
|----|---|-------|------------|--|-----|---|--|--|
| 32 | § 48-52-620 of SC Code of Laws                                      | State | Statute    | Requires public colleges and universities to develop energy conservation plans and to reduce energy consumption by 20% by 2020   | No  | Yes   | Report our agency must/may provide                   |  |
| 33 | § 44-96-80 and § 44-96-140 of SC Code of Laws                       | State | Statute    | Requires the submission of an annual rept of recycling data to be submitted to DHEC  | No  | Yes   | Report our agency must/may provide                   |  |
| 34 | 119 Code of State Regulations                                       | State | Regulation | Regulations for drivers of vehicles on campuses of the University of South Carolina System; authority to issue fines and authority of Chancellor to appoint boards, committees, and courts to oversee regulation | Yes | No - But relates to manner in which one or more agency deliverables is provided |  |  |
| 35 | 62 Code of State Regulations, Sec. 250-262                          | State | Regulation | State Regulations promulgated for South Carolina National Guard College Assistance Program   | Yes | Yes   | Other service or product our agency must/may provide | Financial Aid services                         |
| 36 | 62 Code of State Regulations, Sec. 300-375                          | State | Regulation | State Regulation promulgated for Palmetto Fellows Scholarship Program  | Yes | Yes   | Other service or product our agency must/may provide | Financial Aid services                         |
| 37 | 62 Code of State Regulations, Sec.450-505                           | State | Regulation | State Regulation promulgated for the SC Need-based Grant Program for public institutions   | Yes | Yes   | Other service or product our agency must/may provide | Financial Aid services                         |
| 38 | 62 Code of State Regulations, Sec. 510-522                          | State | Regulation | State Regulation promulgated for the Governor's Teaching Scholarship/Loan Program  | Yes | Yes   | Other service or product our agency must/may provide | Financial Aid services                         |
| 39 | 62 Code of State Regulations, Sec. 540-590                          | State | Regulation | State Regulation promulgated for the African-American Teacher Loan Program   | Yes | Yes   | Other service or product our agency must/may provide | Financial Aid services                         |
| 40 | 62 Code of State Regulations, Sec.600-612                           | State | Regulation | State Regulation promulgated for the determination of rates of tuition and fees (State Residency for tuition).   | Yes | Yes   | Other service or product our agency must/may provide | Business/Accounting services                   |
| 41 | 62 Code of State Regulations, Sec.700-750                           | State | Regulation | State Regulation for Performance Standards and Funding and the Reduction, Expansion, Consolidation, or Closure of an Institution.  | No  | No - But relates to manner in which one or more agency deliverables is provided |  |  |
| 42 | 62 Code of State Regulations, Sec.820-900                           | State | Regulation | State Regulation promulgated for matching of gifts and funds for institutional endowments  | Yes | Yes   | Other service or product our agency must/may provide | Business/Accounting services                   |
| 43 | 62 Code of State Regulations, Sec.900.85-900.140                    | State | Regulation | State Regulation promulgated for the administration of the SC HOPE scholarship program   | Yes | Yes   | Other service or product our agency must/may provide | Financial Aid and Business/Accounting services |
| 44 | 62 Code of State Regulations, Sec. 1000-1040                        | State | Regulation | State Regulation promulgated for the administration of LIFE Scholarship and Palmetto Fellows Scholarship Appeals   | Yes | Yes   | Other service or product our agency must/may provide | Financial Aid and Business/Accounting services |
| 45 | 62 Code of State Regulations, Sec.1100-1170                         | State | Regulation | State Regulation promulgated for oversight and administration of the program for free tuition for residents of SC aged sixty years old and older   | Yes | Yes   | Other service or product our agency must/may provide | Financial Aid and Business/Accounting services |
| 46 | 62 Code of State Regulations, Sec.1200.1200.75                      | State | Regulation | State Regulation promulgated for the administration of the LIFE Scholarship and LIFE Scholarship Enhancements  | Yes | Yes   | Other service or product our agency must/may provide | Financial Aid and Business/Accounting services |
| 47 | Act No. 13 (R22, H3726) of the 2017 Session of the General Assembly | State | Statute    | Legislation pertaining to oversight of the South Carolina Retirement System with stipulated employer and employee contribution rates   | No  | Yes   | Other service or product our agency must/may provide | HR / Payroll services                          |

|    |   |         |            |   |     |   |  |                              |
|----|---|---------|------------|---|-----|---|--|------------------------------|
| 48 | Act No. 22 (R38, H3034) of the 2017 Session of the General Assembly | State   | Statute    | Legislation that extends in-state tuition to spouses and dependents of military personnel and veterans under specified circumstances  | Yes | Yes   | Other service or product our agency must/may provide | Business/Accounting services |
| 49 | OSH Act of 1970   | Federal | Statute    | Requirements to provide a safe and healthful workplace free of serious recognized hazards   | Yes | Yes   | Other service or product our agency must/may provide | Safety services              |
| 50 | 20 USC 1094, Section 487(a)(17)                                     | Federal | Statute    | Mandates the completion of IPEDS surveys in a timely and accurate manner for institutions participating in Federal financial assistance programs  | No  | Yes   | Report our agency must/may provide                   |                              |
| 51 | P.L. 109-270, Section 421(a)(1)                                     | Federal | Statute    | Mandates the collection and reporting of racial and ethnic data of students to the Department of Education for institutions participating in Federal financial assistance programs  | No  | Yes   | Report our agency must/may provide                   |                              |
| 52 | 29 C.F.R. 1602, subparts O, P, and Q                                | Federal | Regulation | Mandates the collection and reporting of racial and ethnic data for Institutional staff to the Department of Education for institutions participating in Federal financial assistance programs  | No  | Yes   | Report our agency must/may provide                   |                              |
| 53 | 34 C.F.R. Part 106.9  | Federal | Regulation | Requirements to ensure nondiscrimination on the basis of sex of students and employees of educational institutions that receive federal financial assistance  | Yes | No - But relates to manner in which one or more agency deliverables is provided |  |                              |
| 54 | 34 C.F.R. 668.41(c)   | Federal | Regulation | Requires an annual notice identifying the availability of institutional and financial aid information as required under FERPA   | Yes | Yes   | Report our agency must/may provide                   |                              |
| 55 | 34 C.F.R. 668 Sections 43-44  | Federal | Regulation | Must make available to prospective and enrolled students information regarding how and where to contact individuals designated to assist enrolled or prospective students in obtaining the institutional or financial aid information   | Yes | Yes   | Report our agency must/may provide                   |                              |
| 56 | 34 C.F.R. 668.41 (a)-(d), 34 C.F.R. 668.42, 34 C.F.R. 668.43        | Federal | Regulation | Requires institutions to make available to prospective and enrolled students information about financial aid  | Yes | Yes   | Report our agency must/may provide                   |                              |
| 57 | 34 C.F.R. 668.40  | Federal | Regulation | Requirement that students be notified that drug law violations will result in a loss of eligibility for any Title IV, HEA grant, loan, or work-study assistance   | Yes | Yes   | Report our agency must/may provide                   |                              |
| 58 | 34 C.F.R. 668.41(c), 34 C.F.R. Part 99                              | Federal | Regulation | Requirement to inform students of their rights to privacy of student records, what information is included in publically available directories, and how the student can refuse to allow the release of information  | Yes | Yes   | Report our agency must/may provide                   |                              |
| 59 | 20 U.S.C. 1015a(i)(1)(V)  | Federal | Statute    | Requirement to post specified items on the U.S. Department of Education's College Navigator website.  | No  | Yes   | Report our agency must/may provide                   |                              |
| 60 | 34 C.F.R. 668.41(a)-(d), 34 C.F.R. 668.43                           | Federal | Regulation | Requirement to make available to prospective and enrolled students information about facilities and services available to individuals with disabilities   | Yes | Yes   | Report our agency must/may provide                   |                              |
| 61 | HEOA Sec. 488(a)(1)(E)  | Federal | Statute    | Requires institutions to make available to prospective and enrolled students information about student diversity  | Yes | Yes   | Report our agency must/may provide                   |                              |
| 62 | 34 C.F.R. 668.41(a) (d), 34 C.F.R. 668.43                           | Federal | Regulation | Requires institutions to make available to prospective and enrolled students information about the price of attendance, including tuition and fees, books and supplies, room and board, transportation costs, and any additional costs for a program in which the student is enrolled or expresses an interest. | Yes | Yes   | Report our agency must/may provide                   |                              |
| 63 | 20 U.S.C. 1015a(a), 20 U.S.C. 1015a(h))                             | Federal | Statute    | Requires institutions to make available on their websites a net price calculator  | No  | Yes   | Report our agency must/may provide                   |                              |

|    |   |         |            |  |     |     |  |
|----|---|---------|------------|--|-----|-----|--|
| 64 | 34 C.F.R. 668.41(a)-(d), 34 C.F.R. 668.43 | Federal | Regulation | Requires institutions to make available to prospective and enrolled students information related to refund policies, procedures for official withdrawal and requirements to return Title IV grants or loan aid   | Yes | Yes | Report our agency must/may provide   |
| 65 | HEOA Sec. 112                             | Federal | Statute    | Requires that the ISBN and retail price information of required and recommended textbooks and supplemental material be made available to students at the time of course registration; also requires disclosure of other course related metrics such as the number of students enrolled and the maximum number of students to be enrolled in the class  | Yes | Yes | Report our agency must/may provide   |
| 66 | 34 CFR 668.41(a)-(d), 34 CFR 668.43       | Federal | Regulation | Requires the institution to make available to prospective and enrolled students information about the academic program of the institution, including current degree programs; instructional, laboratory, and other physical facilities that relate to the academic program; faculty and other instructional personnel; and any plans by the institution for improving the academic programs  | Yes | Yes | Report our agency must/may provide   |
| 67 | HEOA Sec. 488(g)                          | Federal | Statute    | Requires the institution to publicly disclose information about the institution's policies regarding the transfer of credit and articulation agreements  | No  | Yes | Report our agency must/may provide   |
| 68 | 34 C.F.R. 668.41(a)-(d), 34 C.F.R. 668.43 | Federal | Regulation | Requires the institution to make available to prospective and enrolled students the names of associations, agencies, or governmental bodies that accredit, approve, or license the institution and its programs; and procedures for obtaining or reviewing documents describing accreditation, approval, or licensing.   | Yes | Yes | Report our agency must/may provide   |
| 69 | HEOA Sec. 488(a)(1)(E)                    | Federal | Statute    | Requires the Institution to annually make available to current and prospective students the institution's policies and sanctions related to copyright infringement, computer use and file sharing  | Yes | Yes | Report our agency must/may provide   |
| 70 | HEOA Sec. 201                             | Federal | Statute    | Requires the submission of an annual Teacher Preparation Program Report through the state to the U.S. Department of Education  | No  | Yes | Report our agency must/may provide   |
| 71 | HEOA Sec. 107                             | Federal | Statute    | Requires institutions to distribute in writing to each student and each employee standards of conduct that clearly prohibit the unlawful possession, use, or distribution of illicit drugs and alcohol by students and employees on the institution's property or as part of any of the institution's activities; description of applicable legal sanctions under state, local, and federal law description of health risks; description of available counseling, treatment, rehabilitation, or re-entry programs; and clear statement that institution will impose sanctions for violation of standards of conduct and a description of the sanctions; requires a biennial review of the effectiveness of the institution's drug and alcohol abuse prevention program | Yes | Yes | Report our agency must/may provide   |
| 72 | HEOA Sec. 488(a)(1)(E)                    | Federal | Statute    | Requires institutions to make available to current and prospective students information about institutional policies regarding vaccinations  | Yes | Yes | Other service or product our agency must/may provide<br>Enrollment Management services |
| 73 | HEOA Sec. 488(e)(1)(B)-(D)                | Federal | Statute    | Requires for an annual security report that includes emergency response and evacuation procedures, timely warning and a crime log  | Yes | Yes | Report our agency must/may provide   |
| 74 | HEOA Sec. 488(g)                          | Federal | Statute    | Requires institutions to have a policy in place regarding notification procedures for missing students for those residing in on-campus student housing facilities  | Yes | Yes | Report our agency must/may provide   |
| 75 | HEOA Sec. 488(a)(1)(E)                    | Federal | Statute    | Requirements of a fire safety report and fire log  | No  | Yes | Report our agency must/may provide   |
| 76 | HEOA Sec. 493(a)(1)(A)                    | Federal | Statute    | Requires the institution to disclose to the alleged victim of any crime of violence, or a nonforcible sex offense, the results of any disciplinary proceeding conducted by the institution against a student who is the alleged perpetrator of such crime or offense   | Yes | Yes | Report our agency must/may provide   |

|    |   |         |            |  |     |     |  |  |
|----|---|---------|------------|--|-----|-----|--|--|
| 77 | HEOA Sec. 488(a)(1)(E)                                | Federal | Statute    | Requires that institutions make available to current and prospective students the retention rate of certificate- or degree-seeking, first-time, undergraduate students   | Yes | Yes | Report our agency must/may provide                   |  |
| 78 | HEOA Sec. 488(a)(2)-(3)                               | Federal | Statute    | Requires that institution must annually make available to prospective and enrolled students the 150% completion or graduation rate and transfer-out rates of certificate- or degree-seeking, first-time, fulltime, undergraduate students. The graduation rates must be disaggregated by gender, major racial and ethnic subgroup (as defined in IPEDS), recipients of a Federal Pell Grant, recipients of a subsidized Stafford Loan who did not receive a Pell Grant, and students who did not receive either a Pell Grant or a subsidized Stafford Loan | Yes | Yes | Report our agency must/may provide                   |  |
| 79 | HEOA Sec. 488(a)(3), Sec. 488(d)                      | Federal | Statute    | Specifies the requirements of a report on the completion, graduation, and transfer out rates of NCAA student athletes receiving athletically related student aid   | No  | Yes | Report our agency must/may provide                   |  |
| 80 | HEOA Sec. 488(a)(1)(E)                                | Federal | Statute    | Specifies that institutions must make available to current and prospective students information regarding the placement in employment of, and types of employment obtained by, graduates of the institution's degree or certificate programs if those rates have been calculated   | Yes | Yes | Report our agency must/may provide                   |  |
| 81 | HEOA Sec. 488(a)(1)(E)                                | Federal | Statute    | Requires that institutions make available to current and prospective students information regarding the types of graduate and professional education in which graduates of the institution's 4-year degree programs enrolled   | Yes | Yes | Report our agency must/may provide                   |  |
| 82 | 34 CFR 668-41(a)-(b), 34 CFR 668.41(g), 34 CFR 668.47 | Federal | Regulation | Specifies the details of reports to be submitted to the U.S. Department of Education and the information to be given to current and prospective students about the gender breakdown of the student body, the intercollegiate athletic teams, revenue and expenditures associated with athletics, and salary of coaches   | Yes | Yes | Report our agency must/may provide                   |  |
| 83 | HEOA Sec. 493(a)(1)                                   | Federal | Statute    | Requires institutions to make a good faith effort to distribute mail voter registration forms for Federal and State elections  | Yes | Yes | Other service or product our agency must/may provide | Voter registration services                    |
| 84 | 34 CFR 668.14(b)(11)                                  | Federal | Regulation | Requires that institutions inform all eligible borrowers enrolled in the institution about the availability of and their eligibility for grant assistance from the state in which the institution is located, and provide sources of information about grant assistance from other states to borrowers from other states   | Yes | Yes | Other service or product our agency must/may provide | Financial Aid services                         |
| 85 | HEOA Sec. 488(c)                                      | Federal | Statute    | Requires institutions to provide information about rights and responsibilities of students and institutions under Title IV, HEA loan programs to students at any time that information regarding loan availability is provided   | Yes | Yes | Other service or product our agency must/may provide | Financial Aid services                         |
| 86 | HEOA Sec. 489   | Federal | Statute    | Requires that potential students, students and parents of students who receive a Title IV loan be informed that details of the loan will be submitted to the National Student Loan Data System and will be accessible by guaranty agencies, lenders, and institutions determined to be authorized users of the data system   | Yes | Yes | Report our agency must/may provide                   |  |
| 87 | HEOA Sec. 488(g)                                      | Federal | Statute    | Specifies the details of disclosure required prior to the disbursement of Federal Direct loans or Parent PLUS loans  | Yes | Yes | Other service or product our agency must/may provide | Financial Aid services                         |
| 88 | HEOA Sec. 488(b)                                      | Federal | Statute    | Specifies the details of required exit counseling to borrowers of loans under the FFEL, Federal Direct Loan, or Perkins Loan programs  | Yes | Yes | Other service or product our agency must/may provide | Financial Aid services                         |
| 89 | HEOA Sec. 493(a)(1)                                   | Federal | Statute    | Specifies the details of disclosure required of institutions or institution-affiliated organizations (e.g., alumni organizations, foundations) that provide information regarding a private education loan from a lender to a prospective borrower   | Yes | Yes | Other service or product our agency must/may provide | Financial Aid and Business/Accounting services |
| 90 | HEOA Sec. 493(a)(1), Sec. 493(c)                      | Federal | Statute    | Specifies the disclosure of terms and conditions and code of conduct for agents of an institution that provides educational loans  | No  | Yes | Other service or product our agency must/may provide | Financial Aid and Business/Accounting services |

|     |  |         |                    |   |     |   |   |  |
|-----|--|---------|--------------------|---|-----|---|---|--|
| 91  | Americans with Disabilities Act Title II | Federal | Statute            | Anti-discrimination under any education program or activity receiving Federal financial assistance  | Yes | No - But relates to manner in which one or more agency deliverables is provided |   |  |
| 92  | Civil Rights Act Title VII               | Federal | Statute            | Prohibits employment discrimination   | Yes | No - But relates to manner in which one or more agency deliverables is provided |   |  |
| 93  | Education Amendments Act Title IX        | Federal | Statute            | Anti-discrimination under any education program or activity receiving Federal financial assistance  | Yes | No - But relates to manner in which one or more agency deliverables is provided |   |  |
| 94  | Proviso 1A.2                             | State   | FY 2018-19 Proviso | Funds provided to to develop instructional material and programs and to implement professional learning opportunities related to African-American history   | No  | Yes   | Other service or product our agency must/may provide                            | Higher Education institutions may apply for a grant from the Department of Education to develop curriculum   |
| 95  | Proviso 1A.6                             | State   | FY 2018-19 Proviso | Specifies funding allocation by CHE to Teaching Fellows Program for the purpose of recruiting teachers  | No  | No - But relates to sources of funding for one or more agency deliverables      |   |  |
| 96  | Proviso 1A.7                             | State   | FY 2018-19 Proviso | Specifies that appropriations for all 1A provisos be disbursed on a quarterly basis   | No  | No - But relates to sources of funding for one or more agency deliverables      |   |  |
| 97  | Proviso 1A.38                            | State   | FY 2018-19 Proviso | Specifies that institutions may provide a tuition waiver for one three-hour course for public school teachers who serve as supervisors for full-time students completing education degree requirements              | Yes | Yes   | Other service or product our agency must/may provide                            | Tuition waivers  |
| 98  | Proviso 1A.40                            | State   | FY 2018-19 Proviso | STEM centers that provide professional development and science programming to teachers and students are to be included in the state's STEM strategic plan   | Yes | No - But relates to sources of funding for one or more agency deliverables      |   |  |
| 99  | Proviso 1A.47                            | State   | FY 2018-19 Proviso | Specifies a periodic evaluation of any institution currently hosting a Teaching Fellows program   | Yes | Yes   | Other service or product our agency must/may provide                            | Appropriate evaluative documents requested by the Center for Educator Recruitment, Retention and Advancement |
| 100 | Proviso 1A.55                            | State   | FY 2018-19 Proviso | Directs CERRA to develop educational, professional development and incentives and to publish eligibility criteria for higher ed institutions to provide services to support rural teacher recruitment and retention | Yes | Yes   | Other service or product our agency must/may provide                            | Educational services   |
| 101 | Proviso 3.1                              | State   | FY 2018-19 Proviso | Requires state agencies receiving lottery funds develop and implement procedures to monitor expenditures of the funds   | No  | Yes   | Report our agency must/may provide  |  |
| 102 | Proviso 3.4                              | State   | FY 2018-19 Proviso | All institutions of higher education receiving lottery funds must collect and retain the SUNS number of students that was assigned in high school.  | Yes | Yes   | Report our agency must/may provide  |  |
| 103 | Proviso 3.6                              | State   | FY 2018-19 Proviso | States appropriated Lottery funding and allocations to institutions of higher education   | No  | Yes   | Other service or product our agency must/may provide                            | Technology repair and maintenance  |
| 104 | Proviso 11.3                             | State   | FY 2018-19 Proviso | Requires higher ed institutions to cooperate with CHE in providing service for the GEAR-UP program  | Yes | Yes   | Other service or product our agency must/may provide                            | Teacher ed programs to reach disadvantaged middle school students  |
| 105 | Proviso 11.4                             | State   | FY 2018-19 Proviso | Creates an executive committee for EPSCoR with representation from research institutions and four-year teaching universities  | No  | Yes   | Board, commission, or committee on which someone from our agency must/may serve |  |
| 106 | Proviso 11.7                             | State   | FY 2018-19 Proviso | Specifies an in-state tuition rate for military and veterans who participate in the Troop to Teachers program   | Yes | Yes   | Other service or product our agency must/may provide                            | Business/Accounting services   |

|     |               |       |                    |  |     |   |  |  |
|-----|---------------|-------|--------------------|--|-----|---|--|--|
| 107 | Proviso 11.8  | State | FY 2018-19 Proviso | Additional need-based funding provided to foster youth attending higher educational institutions   | Yes | Yes   | Other service or product our agency must/may provide | Financial Aid and Business/Accounting services |
| 108 | Proviso 11.9  | State | FY 2018-19 Proviso | Waives the age restriction for children of certain war veterans to be admitted to higher education with free tuition   | Yes | Yes   | Other service or product our agency must/may provide | Financial Aid and Business/Accounting services |
| 109 | Proviso 11.10 | State | FY 2018-19 Proviso | Mandates that institutions certify that students are meeting all requirements for their declared major and are eligible programs making progress toward completion if they are receiving LIFE or Palmetto Fellows Enhancement stipends | Yes | Yes   | Report our agency must/may provide                   |  |
| 110 | Proviso 11.12 | State | FY 2018-19 Proviso | Require that students with disabilities use all other sources of funding before college transition need-based grants are provided  | Yes | Yes   | Other service or product our agency must/may provide | Financial Aid and Business/Accounting services |
| 111 | Proviso 11.13 | State | FY 2018-19 Proviso | Authorizes the use of Palmetto Fellows and LIFE scholarship awards in the summer   | Yes | Yes   | Other service or product our agency must/may provide | Financial Aid and Business/Accounting services |
| 112 | Proviso 11.14 | State | FY 2018-19 Proviso | Requirement that requests for full-time equivalent positions be covered by sufficient revenue to fund the salary, fringe, future pay increases, and health insurance adjustments   | No  | No - But relates to manner in which one or more agency deliverables is provided |  |  |
| 113 | Proviso 11.15 | State | FY 2018-19 Proviso | Requirement to report to the Commission on Higher Education metrics associated with out of state abatements and fee waivers  | Yes | Yes   | Report our agency must/may provide                   |  |
| 114 | Proviso 11.16 | State | FY 2018-19 Proviso | Requirement to report on institutional debt to the Chariman of the Senate Finance Committee, the Chairman of the House Ways and Means Committee and the Commission on Higher Education   | Yes | Yes   | Report our agency must/may provide                   |  |
| 115 | Proviso 11.17 | State | FY 2018-19 Proviso | Requires a logitudinal report from CHE showing 5 year trends in tuition and fees for public colleges and universities in the State and for all SREB states during the same time period   | Yes | Yes   | Report our agency must/may provide                   |  |
| 116 | Proviso 11.19 | State | FY 2016-17 Proviso | Authorizes the use of Palmetto Fellows and LIFE scholarship awards in the summer   | Yes | Yes   | Other service or product our agency must/may provide | Financial Aid and Business/Accounting services |
| 117 | Proviso 11.21 | State | FY 2018-19 Proviso | Requires that all institutions take into consideration the definition of anti-Semitism when reviewing, investigating and determining if conduct on campus is in violation of anti-discrimination policies                              | No  | Yes   | Other service or product our agency must/may provide | Judicial reviews of conduct                    |
| 118 | Proviso 11.25 | State | FY 2016-17 Proviso | Requirement that requests for full-time equivalent positions be covered by sufficient revenue to fund the salary, fringe, future pay increases, and health insurance adjustments   | No  | No - But relates to manner in which one or more agency deliverables is provided |  |  |
| 119 | Proviso 11.29 | State | FY 2016-17 Proviso | Requirement to report to the Commission on Higher Education metrics associated with out of state abatements and fee waivers  | Yes | Yes   | Report our agency must/may provide                   |  |
| 120 | Proviso 11.30 | State | FY 2016-17 Proviso | Requirement to report on institutional debt to the Chariman of the Senate Finance Committee, the Chairman of the House Ways and Means Committee and the Commission on Higher Education   | Yes | Yes   | Report our agency must/may provide                   |  |
| 121 | Proviso 11.42 | State | FY 2016-17 Proviso | Authorizes the reimbursement of loss tuition associated with differential charges to out-of-state veteran students   | Yes | No - But relates to sources of funding for one or more agency deliverables      |  |  |
| 122 | Proviso 61.2  | State | FY 2018-19 Proviso | Restricts the use of appropriate funds for Defence of Indigents as compensation to any state employee providing services   | Yes | No - But relates to sources of funding for one or more agency deliverables      |  |  |

|     |               |       |                    |  |     |   |  |  |
|-----|---------------|-------|--------------------|--|-----|---|--|--|
| 123 | Proviso 83.6  | State | FY 2018-19 Proviso | Requires state agencies to enter into data sharing agreements with the Department of Employment and Workforce to track employment training outcomes  | Yes | Yes   | Report our agency must/may provide                   |  |
| 124 | Proviso 91.25 | State | FY 2018-19 Proviso | Requires the immediate furnishing of any information related to the institution when requested by the President Pro Tempore of the Senate or the Speaker of the House of Representative in the manner requested.   | Yes | Yes   | Report our agency must/may provide                   |  |
| 125 | Proviso 93.14 | State | FY 2018-19 Proviso | Requires that the conditions and amount of supplemental pay made to CEO of a college or university be set by the Board of Trustees and be reported to the Department of Adminisrtration  | Yes | Yes   | Report our agency must/may provide                   |  |
| 126 | Proviso 93.15 | State | FY 2018-19 Proviso | Limits compensation increases to classified and unclassified employees to the ratio of that the employee's base salary is paid from appropriated funds   | Yes | Yes   | Other service or product our agency must/may provide | HR / Payroll services                          |
| 127 | Proviso 93.17 | State | FY 2018-19 Proviso | Permits employees who are serving on active military service as a result of an emergency or conflict to use a specified amount of annual leave and up to 90 days of sick leave as if it were annual leave per calendar year  | Yes | Yes   | Other service or product our agency must/may provide | HR / Payroll services                          |
| 128 | Proviso 93.20 | State | FY 2018-19 Proviso | Requires institutions to provide evidence when requested that cyber security policies and standards meet or exceed those set by the state  | No  | Yes   | Report our agency must/may provide                   |  |
| 129 | Proviso 93.21 | State | FY 2018-19 Proviso | Specifies when holidays are to be observed when they fall on a Saturday or Sunday. Directs the payment of any bills or promissory notes that fall due on observed holidays to be payable on the day following the holiday  | No  | Yes   | Other service or product our agency must/may provide | Business/Accounting services                   |
| 130 | Proviso 97.2  | State | FY 2018-19 Proviso | Requires agencies to follow accounting policy directives issued by the State Comptroller General in conformance with Generally Accepted Accounting Principles (GAAP)   | No  | Yes   | Other service or product our agency must/may provide | Business/Accounting services                   |
| 131 | Proviso 98.8  | State | FY 2018-19 Proviso | Restricts new enrollments into the SC tuition prepayment program for the year and limits the tuition increase for students in the prepayment program to 7% of the tuition and fee level of 2006-07. Mandates that tuition and fee levels above 7% not be passed on to the students but rather be cpvered by a fee waiver   | Yes | Yes   | Other service or product our agency must/may provide | Financial Aid and Business/Accounting services |
| 132 | Proviso 102.5 | State | FY 2018-19 Proviso | Authorizes state agencies such as institutions of higher education to provide services to the Revenue and Fiscal Affairs Office in an effort to promote efficient and economical operations  | Yes | Yes   | Other service or product our agency must/may provide | Business/Accounting services                   |
| 133 | Proviso 104.2 | State | FY 2016-17 Proviso | Authorizes the State Fiscal Accountability Authority to remove any permanent position in a state agency that remains vacant for more than 12 months  | No  | No - But relates to manner in which one or more agency deliverables is provided |  |  |
| 134 | Proviso 104.9 | State | FY 2018-19 Proviso | Limits the salary of agency heads to rates established by the Agency Head Salary Commission and mandates the State Fiscal Accounting Authority to conduct a study of agency head and technical college president comprensaion every 4 years with the costs of the study being shared by participating agencies   | No  | No - Does not relate directly to any agency deliverables                        |  |  |
| 135 | Proviso 105.1 | State | FY 2018-19 Proviso | Requires that the costs of an annual audit of federal funds received contracted to a nationally recognized CPA firm be covered in equitable portion by each state agency   | No  | Yes   | Distribute funding to another entity                 |  |
| 136 | Proviso 108.6 | State | FY 2018-19 Proviso | Specifies an employer premium increase of 7.4% and a subscriber increase of 0% for the State Health plan and authorizes the Public Employee Benefit Authority to adjust the plan and benefits to ensure fiscal stability of the plan   | Yes | Yes   | Other service or product our agency must/may provide | HR and Business/Accounting services            |
| 137 | Proviso 117.5 | State | FY 2018-19 Proviso | Mandates all state agencies to provide a list of their employees who are competent to serve as court examiners to the Judicial Department and for courts to use state employees whenever feasible and for state employees to receive no additional compensation for performing such services.  | No  | Yes   | Report our agency must/may provide                   |  |
| 138 | Proviso 117.8 | State | FY 2018-19 Proviso | Requires the remittance of all revenues and income collected, except fees received as tuition, matriculation and registration, to the State Treasurer. Requires that fees levied to be used to fulfill the purpose for which the fee was levied and that such fees not be charged in excess of the amount necessary to supply the service for which the fee was charged. | No  | Yes   | Other service or product our agency must/may provide | Business/Accounting services                   |

|     |                |       |                    |   |     |  |  |  |
|-----|----------------|-------|--------------------|---|-----|--|--|--|
| 139 | Proviso 117.9  | State | FY 2018-19 Proviso | Authorizes the transfer of appropriations within programs and within the agency with notification to the Executive Budget Office and Comptroller General. Limits transfer to not exceed 20% of the program budget.  | No  | Yes  | Report our agency must/may provide                   |  |
| 140 | Proviso 117.11 | State | FY 2018-19 Proviso | Directs the fixation of student fees applicable to student housing, dining halls, health services, parking, and personal subsistence by the appropriate Board of Trustees   | No  | No - But relates to sources of funding for one or more agency deliverables |  |  |
| 141 | Proviso 117.13 | State | FY 2018-19 Proviso | Requires State Agencies to report filled vacant positions broken out by race and gender by October 31st to the State Human Affairs Commission.  | No  | Yes  | Report our agency must/may provide                   |  |
| 142 | Proviso 117.14 | State | FY 2018-19 Proviso | Authorizes the Executive Budget Office to monitor FTE employee positions at state agencies and to reduce the number of authorized positions when agencies are carry an excess of positions. Requires agencies to update FTE employee information with the Executive Budget Office.  | No  | Yes  | Report our agency must/may provide                   |  |
| 143 | Proviso 117.15 | State | FY 2018-19 Proviso | Provides for a housing allowance to presidents of state institutions of higher learning and establishes compensation restrictions   | No  | Yes  | Other service or product our agency must/may provide | Business/Accounting services                   |
| 144 | Proviso 117.20 | State | FY 2018-19 Proviso | Establishes conditions and rates for reimbursement of travel and subsistence expenses for state employees and relocation expenses for new employees   | No  | Yes  | Other service or product our agency must/may provide | Business/Accounting services                   |
| 145 | Proviso 117.21 | State | FY 2018-19 Proviso | Requires that institutions that provide appropriate funds to another organization collect a report that includes an accounting of how the funds were spent and the outcome measures used to determine success of goals. Agencies receiving the report must forward the information to the Chairman of the Senate Finance Committee and the Chairman of the House Ways and Means Committee | No  | Yes  | Report our agency must/may provide                   |  |
| 146 | Proviso 117.23 | State | FY 2018-19 Proviso | Authorizes the carrying forward of unspent general fund appropriations from the prior fiscal year to the current fiscal year. Limits the carry forward to a maximum of 10% of the original general fund.  | No  | No - But relates to sources of funding for one or more agency deliverables |  |  |
| 147 | Proviso 117.25 | State | FY 2018-19 Proviso | Requires agencies to first consider contracting for services or purchasing goods and services through the Department of Corrections Prison Industries Program when procuring goods and services.  | No  | Yes  | Other service or product our agency must/may provide | Procurement Services                           |
| 148 | Proviso 117.26 | State | FY 2018-19 Proviso | Mandates the reporting of the top 10%, not to exceed 25 employees who have incurred travel expences along with a brief summary of the type of travel incurred   | No  | Yes  | Report our agency must/may provide                   |  |
| 149 | Proviso 117.28 | State | FY 2018-19 Proviso | Requires institutions that operate a day-care center charge fees comparable to those charged by private entities and to not set lower rates for faculty, staff, or students of the institution  | Yes | Yes  | Other service or product our agency must/may provide | Business/Accounting services                   |
| 150 | Proviso 117.29 | State | FY 2018-19 Proviso | Requirement to identify key program area descriptions and expenditures and to link these to key financial and performance measures in an Annual State Accountability Report   | No  | Yes  | Report our agency must/may provide                   |  |
| 151 | Proviso 117.30 | State | FY 2018-19 Proviso | Allows for the collection of service charges to cover costs associated with processing and collecting of unpaid balances due to dishonored instruments or electronic payments.  | No  | Yes  | Other service or product our agency must/may provide | Business/Accounting services                   |
| 152 | Proviso 117.34 | State | FY 2018-19 Proviso | Mandates the reporting of outstanding amounts due to an institution and methods used to collect that debt   | No  | Yes  | Report our agency must/may provide                   |  |
| 153 | Proviso 111.41 | State | FY 2018-19 Proviso | Mandates agencies to purchase of recycled steel when it can be acquired at a competitively reasonable price   | No  | No - Does not relate directly to any agency deliverables                   |  |  |
| 154 | Proviso 117.42 | State | FY 2018-19 Proviso | Authorizes the waiver of all provisions tha require additional general fund appropriations except those specified for LIFE and Palmetto Fellows Scholarships  | No  | Yes  | Other service or product our agency must/may provide | Financial Aid and Business/Accounting services |



|     |                |       |                    |  |     |   |  |   |
|-----|----------------|-------|--------------------|--|-----|---|--|---|
| 155 | Proviso 117.45 | State | FY 2018-19 Proviso | Provides an exception for universities and colleges to a provision preventing an increase in parking fees  | No  | Yes   | Other service or product our agency must/may provide | Parking services and Business/Accounting services |
| 156 | Proviso 117.47 | State | FY 2018-19 Proviso | Authorizes the use of insurance reimbursement to offset expenses related to a claim, permitting the funds to be retained, expended and carried forward   | No  | Yes   | Other service or product our agency must/may provide | HR and Business/Accounting services               |
| 157 | Proviso 117.48 | State | FY 2018-19 Proviso | Requires all state agencies to furnish to the Human Resources Division an organizational chart showing all authorized positions, class title, class code, position number and indications as to whether such positions are filled or vacant  | No  | Yes   | Report our agency must/may provide                   |   |
| 158 | Proviso 117.50 | State | FY 2018-19 Proviso | Mandates that state agencies actively pursue cost savings through collaborative efforts and where feasible to combine administrative support functions to maximize efficiency and effectiveness.   | No  | No - But relates to manner in which one or more agency deliverables is provided |  |   |
| 159 | Proviso 117.55 | State | FY 2018-19 Proviso | Permits state agencies to spend state, federal, and other sources of revenue to provide lump sum bonuses, not to exceed \$3,000 per year. Limits bonuses to employees earning under \$100,000.   | No  | Yes   | Other service or product our agency must/may provide | HR and Business/Accounting services               |
| 160 | Proviso 117.58 | State | FY 2018-19 Proviso | Requires the submission of annual audited financial statements to the State Auditor's Office   | No  | Yes   | Report our agency must/may provide                   |   |
| 161 | Proviso 117.65 | State | FY 2018-19 Proviso | Authorizes the use of state, federal and other sources of revenue to provide lump sum bonuses to recruit or retain workers in critical needs jobs. Bonuses cannot exceed \$10,000 per year and must be based on the State Human Resources guidelines. Also per its paid educational leave of employees in FTE positions deemed critical.   | Yes | Yes   | Other service or product our agency must/may provide | HR and Business/Accounting services               |
| 162 | Proviso 117.68 | State | FY 2018-19 Proviso | Authorizes agency heads to institute voluntary employee furlough programs of not more than 90 days per fiscal year   | No  | Yes   | Other service or product our agency must/may provide | HR and Business/Accounting services               |
| 163 | Proviso 117.70 | State | FY 2018-19 Proviso | Mandates compliance with antidiscrimination laws in the event of a reduction in force  | No  | Yes   | Other service or product our agency must/may provide | HR and Business/Accounting services               |
| 164 | Proviso 117.71 | State | FY 2018-19 Proviso | Requires that the agency head take 5 days furlough in the current fiscal year in the event of a reduction in force.  | No  | Yes   | Other service or product our agency must/may provide | HR and Business/Accounting services               |
| 165 | Proviso 117.72 | State | FY 2018-19 Proviso | Waives the requirement to submit printed copies of reports mandated by Sections 2-47-40, 2-47-50, and 59-103-110 of the 1976 Code of Laws and to submit documents electronically. Waives submission of reports required by Sections 59-101-350, 59-103-30, 59-103-45(4), and 59-103-160(D) for the current fiscal year with exception of student pass rates on professional examinations and data elements required by the Commission on Higher Education Management Information System. | No  | Yes   | Report our agency must/may provide                   |   |
| 166 | Proviso 117.74 | State | FY 2018-19 Proviso | Requires that a report be made available to the public on the institution's website showing aggregate amounts of fines and fees that were charged and collected in the prior fiscal year   | No  | Yes   | Report our agency must/may provide                   |   |
| 167 | Proviso 117.75 | State | FY 2018-19 Proviso | Requires mandatory furloughs and establishes guidelines for implementation in the event general funds appropriated to a state agency are less than the general funds appropriated for the agency in the prior fiscal year. The requirement includes situations where there is a midyear across-the-board reduction   | No  | No - But relates to manner in which one or more agency deliverables is provided |  |   |
| 168 | Proviso 117.76 | State | FY 2018-19 Proviso | Establishes guidelines for implementation of furloughs in the event general funds appropriated to a state agency are less than the general funds appropriated for the agency in the prior fiscal year and when there is a reduction in force.  | No  | Yes   | Other service or product our agency must/may provide | HR and Business/Accounting services               |
| 169 | Proviso 117.77 | State | FY 2018-19 Proviso | Requires that state agencies realize a cost savings of at least 25% in the aggregate when managing positions that become vacant due to retirements. Requires agencies to review salaries of such positions and to consider the possibility of delay before filling such vacant positions.  | No  | Yes   | Other service or product our agency must/may provide | HR and Business/Accounting services               |

|     |                 |       |                    |   |     |   |  |                              |
|-----|-----------------|-------|--------------------|---|-----|---|--|------------------------------|
| 170 | Proviso 117.80  | State | FY 2018-19 Proviso | Prevents state agencies from dismissing, suspending, demoting, or reducing the compensation of an employee solely because of sworn testimony regarding alleged wrongdoing given to a legislative committee  | No  | Yes   | Other service or product our agency must/may provide | HR / Payroll services        |
| 171 | Proviso 117.81  | State | FY 2018-19 Proviso | Mandates that state agencies operate within approved limits and to avoid operating deficits for the fiscal year.  | No  | Yes   | Other service or product our agency must/may provide | Business/Accounting services |
| 172 | Proviso 117.84  | State | FY 2018-19 Proviso | Requires state agencies to provide a link online to monthly reports containing substantially all information contained in the monthly state procurement card statements. Stipulates what must and must not be on the website.   | No  | Yes   | Report our agency must/may provide                   |                              |
| 173 | Proviso 117.85  | State | FY 2018-19 Proviso | Requires tht any proposal or regulation that levies or incnreases a fee, fine or that otherwises generates revenue be titled to indicate the fee, fine or revenue source  | No  | No - But relates to manner in which one or more agency deliverables is provided |  |                              |
| 174 | Proviso 117.88  | State | FY 2018-19 Proviso | Requires state agencies to pay from recovered monies the cost associated with the State Fiscal Accountability Authority contracting with firms to conduct recovery audits of payments made by state agencies to vendors for good and services.                                    | No  | No - But relates to manner in which one or more agency deliverables is provided |  |                              |
| 175 | Proviso 117.91  | State | FY 2018-19 Proviso | In the event of a base reduction, agencies are to first institute payroll management strategies such as furloughs, employee compensation reduction and hiring freezes; followed by eliminating administrative overhead costs; and as a last resort, reducing programmatic funding | No  | No - But relates to manner in which one or more agency deliverables is provided |  |                              |
| 176 | Proviso 117.92  | State | FY 2017-18 Proviso | Stipulates how to manage agency reductions in the event agencies are assessed a base reduction.   | No  | Yes   | Other service or product our agency must/may provide | HR / Payroll services        |
| 177 | Proviso 117.98  | State | FY 2018-19 Proviso | Requires agencies to provide either a separate audit of federal expenditures or a schedule of all federal program expenditures to the Office of the State Auditor bo later than August 15th each year.  | No  | Yes   | Report our agency must/may provide                   |                              |
| 178 | Proviso 117.101 | State | FY 2018-19 Proviso | Allows higher education institutions to use state aircraft for the purpose of athletic recruitment provide the institution fully reimburses all costs using non-general funds.  | No  | No - But relates to sources of funding for one or more agency deliverables      |  |                              |
| 179 | Proviso 117.102 | State | FY 2017-18 Proviso | Allows higher education institutions to use state aircraft for the purpose of athletic recruitment provide the institution fully reimburses all costs using non-general funds.  | No  | No - But relates to sources of funding for one or more agency deliverables      |  |                              |
| 180 | Proviso 117.05  | State | FY 2018-19 Proviso | Mandates the conditions and details of disclosure of any breach of security of data systems.  | Yes | Yes   | Report our agency must/may provide                   |                              |
| 181 | Proviso 117.106 | State | FY 2017-18 Proviso | Mandates the conditions and details of disclosure of any breach of security of data systems.  | Yes | Yes   | Report our agency must/may provide                   |                              |
| 182 | Proviso 117.112 | State | FY 2018-19 Proviso | Mandates all state agencies to submit an information technology plan and an information security plan to the Department of Adminsitration by August 1st of the fiscal year and to submit any changes or updates to the plans as they occur.                                       | No  | Yes   | Report our agency must/may provide                   |                              |
| 183 | Proviso 117.113 | State | FY 2017-18 Proviso | Mandates all state agencies to submit an information technology plan and an information security plan to the Department of Adminsitration by August 1st of the fiscal year and to submit any changes or updates to the plans as they occur.                                       | No  | Yes   | Report our agency must/may provide                   |                              |
| 184 | Proviso 117.122 | State | FY 2018-19 Proviso | Allowance for state employees to donate annual or sick leave to specific state employees in the event of a medical emergency rather than to a leave pool account. Establishes conditions for such transfers.  | No  | Yes   | Other service or product our agency must/may provide | HR / Payroll services        |
| 185 | Proviso 117.124 | State | FY 2017-18 Proviso | Allowance for state employees to donate annual or sick leave to specific state employees in the event of a medical emergency rather than to a leave pool account. Establishes conditions for such transfers.  | No  | Yes   | Other service or product our agency must/may provide | HR / Payroll services        |

|     |                 |       |                    |   |     |   |   |                      |
|-----|-----------------|-------|--------------------|---|-----|---|---|----------------------|
| 186 | Proviso 117.131 | State | FY 2016-17 Proviso | Authorizes funds allocated for proviso 118.16 of Act 286 of 2014 be redirected for the purpose of energy efficiency repair and maintenance  | No  | No - But relates to sources of funding for one or more agency deliverables      |   |                      |
| 187 | Proviso 117.148 | State | FY 2018-19 Proviso | Directs the Department of Administration (DOA) to implement updated policies to protect mobile technologies such as cellular phone, tablets and laptops and to consolidate all existing protection plans in effect at state agencies. The DOA is to implement a statewide contract for protecting all state owned mobile devices. | No  | No - But relates to manner in which one or more agency deliverables is provided |   |                      |
| 188 | Proviso 117.153 | State | FY 2018-19 Proviso | Directs state agencies to employ guidelines established bu the State Fiscal Authority for contracts exceeding \$50,000 in which the agency takes into consideration a prospective contactor's record of promptly paying its employees when considering a new or renewal of existing contracts.                                    | No  | Yes   | Other service or product our agency must/may provide                            | Procurement Services |
| 189 | Proviso 117.155 | State | FY 2018-19 Proviso | Specifies the creation of a SC Industry, Workforce and Education Data Warehouse and oversight committee to link industry, workforce and education data. Procedures shall be developed for the sharing of personal information currently held by state agencies.   | Yes | Yes   | Board, commission, or committee on which someone from our agency must/may serve |                      |
| 190 | Proviso 118.1   | State | FY 2018-19 Proviso | Mandates that state agencies submit all fiscal documents and electronic workflow for accounts payable transactions to the Office of Conptroller General by July 12, 2019 for the 2018-19 fiscal year.   | No  | Yes   | Report our agency must/may provide  |                      |
| 191 | Proviso 118.6   | State | FY 2018-19 Proviso | Prohibits institutions from using general appropriated funds to compensate employees engaged in lobbying on behalf of the institution or from using state funds to enter into contracts for lobbbying services  | No  | No - But relates to manner in which one or more agency deliverables is provided |   |                      |

|              |  |  |  |
|--------------|--|--|--|
| Agency Name: | UNIVERSITY OF SOUTH CAROLINA - LANCASTER |  |  |
|--------------|--|--|--|

Fiscal Year 2017-2018  
Accountability Report

|              |      |          |     |
|--------------|------|----------|-----|
| Agency Code: | H370 | Section: | 20E |
|--------------|------|----------|-----|

Customer Template

| Divisions or Major Programs        | Description   | Service/Product Provided to Customers  | Customer Segments | <u>Specify only for the following Segments:</u> (1) <u>Industry:</u> Name; (2) <u>Professional Organization:</u> Name; (3) <u>Public:</u> Demographics.   |
|------------------------------------|---|--|-------------------|---|
| Academic Divisions                 | Academic Divisions are comprised of faculty in three academic areas: Humanities; Math, Science, Nursing, and Public Health; and Business, Behavioral Sciences, Criminal Justice, and Education                      | Instruction and academic advising for students in pursuit of associate and baccalaureate   | General Public    | Age: 17 and older<br>Gender: All<br>Economic Requirements: All incomes<br>Other Required Conditions: Student demographics include new freshmen, continuing, and nondegree students, as well as other more specialized and limited enrollment categories such as transient students. In addition to the students counted in USCL's official headcount, academic divisions also provide services to Palmetto College and BSN students |
| Dual Enrollment                    | Coordinates services between Academic Divisions and SC high schools for educational credit  | Dual enrollment provides opportunities for eligible high school students to earn college credit while taking courses that also count toward high school graduation requirements  | School Districts  | Age: 16-19<br>Gender: All<br>Economic Requirements: All incomes<br>Other Required Conditions: Students must be enrolled in SC high schools  |
| Admissions                         | Enrollment services   | Provides assistance to students and parents in admissions and registration   | General Public    | Age: 16 and older<br>Gender: All<br>Economic Requirements: All incomes  |
| Student Affairs                    | Comprehensive services in support of student life, including travel study, athletics, disability and veteran services, and counseling services  | Provides co-curricular activities, from sports to clubs to special programs to both enrich and enhance students' collegiate experience   | General Public    | Age: 16 and older<br>Gender: All<br>Economic Requirements: All incomes<br>Other Required Conditions: Students must be enrolled at USCL  |
| TRIO Programs                      | TRIO Programs at USCL consist of several student support services, including Opportunity Scholars and Upward Bound  | Provides academic advising, tutoring, college transfer assistance to current students, and motivation and support to help high school students transition successfully into college  | General Public    | Age: 16 and older<br>Gender: All<br>Economic Requirements: All incomes<br>Other Required Conditions: Students must be enrolled at USCL or area high schools   |
| Career Services                    | Support services for students in their career and job search choices  | Provides career counseling, resume assistance, and job search strategies to students, in addition to maintaining a listing of local job opportunities for students   | General Public    | Age: 16 and older<br>Gender: All<br>Economic Requirements: All incomes<br>Other Required Conditions: Students must be enrolled at USCL  |
| Campus Bookstore                   | On campus facility selling textbooks and supplies to students, as well as USCL apparel to students and community  | Affordable textbooks for classes and supplies for lab classes  | General Public    | Age: All<br>Gender: All<br>Economic Requirements: All incomes<br>Other Required Conditions: Open to the public  |
| Medford Library                    | Collections in books, electronic resources and databases, audio visuals, periodicals, and government documents to support the teaching and scholarship endeavors of USC Lancaster, as well as the general community | Acquires, organizes, makes accessible, maintains and preserves information resources, and educates users about the library's services, resources, and access   | General Public    | Age: All<br>Gender: All<br>Economic Requirements: All incomes<br>Other Required Conditions: Open to the public  |
| Gregory Health and Wellness Center | Community health and fitness prorgams and facilities  | Provides access to general exercise equipment and other fitness facilities, such as raquetball and handball, in addition to classes in swimming, tennis, Zumba, indoor cycling, yoga, and others   | General Public    | Age: All<br>Gender: All<br>Economic Requirements: All incomes<br>Other Required Conditions: Students, staff, and faculty receive free membership; community members pay for quarterly or monthly memberships  |
| Native American Studies Center     | A comprehensive center for the study of South Carolina's Native American peoples, their histories, and their cultures   | Offers visitors the opportunity to view the single largest collection of Catawba Indian pottery in existence; study primary and secondary texts on Native Americans in the Southeast; participate in educational classes and programs; and observe archaeology, language, and folklore and oral history labs | General Public    | Age: All<br>Gender: All<br>Economic Requirements: All incomes<br>Other Required Conditions: Open to the public  |

|                         |  |   |                |  |
|-------------------------|--|---|----------------|--|
| Academic Success Center | Tutoring services and support to help USC Lancaster students attain academic success | Provides students with a variety of resources to support their academic pursuits, including one-on-one tutoring, computer assisted instruction (CAI), instructional video tapes, supplementary handbooks and texts, and workbooks   | General Public | Age: 16 and older<br>Gender: All<br>Economic Requirements: All incomes<br>Other Required Conditions: Students must be enrolled at USCL   |
| USCL Health Services    | Health education services facility   | Provides a range of community health resources, including a diabetes self-management education program, as well as services through the Lucy Graybill Morton Cancer Rehabilitation Clinic , the John Morrison White Cardiac Rehabilitation Clinic, and The Dr. W.L. McDow Physical Therapy Clinic | General Public | Age: 18 and older<br>Gender: All<br>Economic Requirements: All incomes<br>Other Required Conditions: Open to the public  |
| Facilities Rental       | Facilities to accommodate business and special occasion needs in the local community | Provide use of university facilities for meetings, conferences, weddings, and other special events  | General Public | Age: 18 and older<br>Gender: All<br>Economic Requirements: All incomes<br>Other Required Conditions: Facilities must be reserved and persons and entities renting space must provide a certificate of general liability insurance coverage |

|              |  |          |  |
|--------------|--|----------|--|
| Agency Name: | UNIVERSITY OF SOUTH CAROLINA - LANCASTER |          | Fiscal Year 2017-2018<br>Accountability Report |
| Agency Code: | H370                                     | Section: |  |

| Partner Template                                 |                               |   |                    |
|--|-------------------------------|---|--------------------|
| Name of Partner Entity                           | Type of Partner Entity        | Description of Partnership  | Associated Goal(s) |
| University of South Carolina                     | Higher Education Institute    | Partner with USC Columbia campus, including the President and Board of Trustees, to provide associate and four year degree completion programs to students across the state of South Carolina   | All                |
| Palmetto College                                 | Higher Education Institute    | Partner with regional two-year Palmetto College campuses to provide four-year degree completion programs such as the Bachelor of Liberal Studies and the Bachelor of Organizational Leadership  | All                |
| SC Four-Year Universities                        | Higher Education Institute    | Partner with universities such as USC Beaufort and others to provide four-year degree completion programs such as hospitality management  | 2                  |
| York Technical College                           | Higher Education Institute    | Shares resources and faculty to provide a collaborative two-year nursing program for students   | 2                  |
| Educational Foundation of USC Lancaster          | Private Business Organization | Solicits, receives, manages and disburses funds for the advancement of the interests of the University of South Carolina Lancaster  | 1, 2               |
| Lancaster County Commission for Higher Education | Private Business Organization | Responsible for providing USCL with a campus and necessary buildings, for the maintenance of facilities, for contracts and agreements with the University of South Carolina, for solicitation of funds and acceptance of donations, for negotiations with the Lancaster County Council, the Lancaster County Delegation and other governmental bodies and for long-range planning for the total needs of the University of South Carolina Lancaster | All                |
| Founders Federal Credit Union                    | Private Business Organization | Provides donations for facilities and equipment, most notably contributions to the newest USCL classroom building, Founders Hall  | 3                  |
| J. Marion Sims Foundation                        | Non-Governmental Organization | Provides grant funds directly to USCL and partners in providing community health and wellness programs and initiatives  | 3                  |
| Springs Memorial Hospital                        | Private Business Organization | Partners in providing health and wellness to the Lancaster community  | 3                  |
| Private scholarship donors                       | Individual                    | Many individuals donate funds to contribute to scholarship funds and to endowed scholarships, in addition to corporate donors   | 1,2                |
| Duke Energy                                      | Private Business Organization | Provides funding for campus programs and facilities, including for example a large donation for the establishment of the USCL Native American Studies   | 2, 3               |
| Comporium  | Private Business Organization | Provides funding for campus programs and facilities, such as monitors and tablets for displays in the Native American Studies Center  | 2, 3               |
| US Department of Education                       | Federal Government            | Provides funding for TRIO programs for student support  | 1, 2               |
| Commission on Higher Education                   | State Government              | Provides oversight and advocacy for South Carolina higher education institutions  | All                |
| Governor and General Assembly                    | State Government              | Provides funding for campus programs and facilities   | All                |
| Southern Association of Colleges and Schools     | Higher Education Institute    | Reviews and accredits USCL's degree offerings in conjunction with USC Columbia programs   | All                |

|  |                               |  |      |
|--|-------------------------------|--|------|
| Accreditation Council for Business Schools and Programs                    | Higher Education Institute    | Reviews and accredits USCL's two-year Associates in Business degree  | 1, 2 |
| Arts and Humanities Organizations, Commissions, and Grant Funding Agencies | Professional Association      | Provide campus and community arts programming in partnership with arts organizations such as the National Endowment for the Arts, as well as local and regional organizations such as the South Carolina Arts Commission, the Lancaster County Council for the Arts, and the SC Humanities Council. Includes support in particular for the Native American Studies Center and the USCL theatre program | All  |
| SC County School Districts   | K-12 Education Institute      | Partners in providing educational activities for area students, including for example Honors Day for area high school students, and dual enrollment programs throughout the state  | 1, 2 |
| City of Lancaster  | Local Government              | Provides funding for campus programs and facilities  | All  |
| Lancaster County Council   | Local Government              | Provides funding for campus programs and facilities  | All  |
| Lancaster County Chamber of Commerce                                       | Professional Association      | Helps promote campus activities and events   | All  |
| Academic Honor Societies   | Professional Association      | Partners with professional student organizations such as Kappa Pi Delta and Rotaract to recognize excellence in education and provide students with service opportunities in the community   | 1, 2 |
| Rotary   | Professional Association      | Sponsors programming to develop professional and leadership skills and to provide opportunities for community service  | 2    |
| Boys and Girls Clubs   | Non-Governmental Organization | Provide educational opportunities for area students  | 2    |
| Charlotte Area Education Consortium  | Higher Education Institute    | Charlotte Area Educational Consortium (CAEC), which includes twenty-five colleges and universities in the Charlotte area and allows full-time undergraduate students at USC Lancaster to enroll in an additional course on a space available basis at a member school at no additional academic fee charge   | 2    |
| Olde English Consortium  | Professional Association      | Collaborates in promoting excellence in education to improve education, economic development, and the quality of life in the region and throughout the state   | 2    |
| Sun City Carolina Lakes  | Non-Governmental Organization | Partners in providing educational programming to an active adult community   | 2    |
| Upper Palmetto YMCA  | Non-Governmental Organization | Partners in providing health and wellness program sand education to campus and community   | 2,3  |

|              |  |          |     |
|--------------|--|----------|-----|
| Agency Name: | UNIVERSITY OF SOUTH CAROLINA - LANCASTER |          |     |
| Agency Code: | H370                                     | Section: | 20E |

Fiscal Year 2017-2018  
Accountability Report

Report and External Review Template

| Item | Is this a Report, Review, or both? | Report or Review Name  | Name of Entity Requesting the Report or Conducting Review                        | Type of Entity       | Reporting Frequency | Current Fiscal Year: Submission Date or Review Timeline (MM/DD/YYYY) | Summary of Information Requested in the Report or Reviewed  | Method to Access the Report or Information from the Review  |
|------|------------------------------------|--|--|----------------------|---------------------|--|---|---|
| 1    | External Review only               | SC OMB A-133 Reports   | Elliott Davis Decosimo CPA   | Outside Organization | Annually            | 07/01/2016-06/30/2017  | Audit of amounts and disclosures in the financial statements, including evaluating the appropriateness of accounting policies used and the reasonableness of significant accounting estimates made by management, as well as evaluating the overall presentation of the financial statements.   | <a href="https://www.sc.edu/about/offices_and_divisions/controller/financial_reporting/f_inancial_statements/index.php">https://www.sc.edu/about/offices_and_divisions/controller/financial_reporting/f_inancial_statements/index.php</a>   |
| 2    | External Review only               | USC Cola & Regionals Financial Statements Audit                              | Elliott Davis Decosimo CPA   | Outside Organization | Annually            | 07/01/2016-06/30/2017  | Independent auditor's report on compliance for each major federal program; report on internal control over compliance; and report on schedule of expenditures of federal awards required by the uniform guidance  | <a href="https://www.sc.edu/about/offices_and_divisions/controller/financial_reporting/f_inancial_statements/index.php">https://www.sc.edu/about/offices_and_divisions/controller/financial_reporting/f_inancial_statements/index.php</a>   |
| 3    | Internal Review and Report         | Comprehensive Annual Financial Report  | University of South Carolina   | State                | Annually            | 07/01/207-06/30/2018   | This report includes the financial statements as well as other data that describes the University's financial position at the end of the year and helps ensure university accountability to the public  | <a href="https://sc.edu/about/offices_and_divisions/controller/financial_reporting/financial_statements/index.php">https://sc.edu/about/offices_and_divisions/controller/financial_reporting/financial_statements/index.php</a>   |
| 4    | External Review and Report         | Accountability Report  | South Carolina Department of Administration, Executive Budget Office             | State                | Annually            | 09/15/2018   | Report must include a discussion of prior year expenditures and associates expenditures with prospective goals, strategies and objectives to move the agency forward in future years  | <a href="http://www.admin.sc.gov/budget/agency-accountability-reports">http://www.admin.sc.gov/budget/agency-accountability-reports</a>   |
| 5    | Internal Review and Report         | Blueprint for Academic Excellence  | USC Columbia, for submission to the Southern Association of Colleges and Schools | State                | Annually            | 03/15/2018   | Reports on dashboard performance indicators, including enrollment, retention, faculty, community engagement, etc.   | <a href="https://www.sc.edu/about/offices_and_divisions/provost/planning/blueprints.php">https://www.sc.edu/about/offices_and_divisions/provost/planning/blueprints.php</a> (note: Campus report embedded within Palmetto College report)   |
| 6    | External Review and Report         | CHE Placement 301 Report   | Commission on Higher Education   | State                | Annually            | 07/31/2017   | Report on progress of graduates one year after graduation   | <a href="http://www.che.sc.gov/">http://www.che.sc.gov/</a>   |
| 7    | External Review and Report         | Lancaster County Commission for Higher Education Funding Expenditures Report | Lancaster County   | Local Govt.          | Annually            | 07/31/2017   | Reports tax revenues received from Lancaster County and a breakdown of how those funds were expended  | electronic copy available by request from the USCL Office of the Dean   |
| 8    | External Review and Report         | Institutional Effectiveness Report   | South Carolina Commission on Higher Education                                    | State                | Annually            | 08/01/2017   | Report results of professional examinations for USCL Associate in Nursing Degree graduates, National Council Licensure Exam (NCLEX)   | electronic copy available by request from the Office of Academic and Student Affairs  |
| 9    | External Review and Report         | Quality Assurance Report   | Accreditation Council for Business Schools and Programs                          | Outside Organization | Other               | 09/15/2016<br>(Bi-Annually, due again 09/15/2018)                    | Includes information on the business program, including changes within the institution and/or the business programs that alters the status of the business faculty, the business curriculum, the resources in support of the business programs, or other ACBSP accreditation standards. Report is submitted every two years for reaccreditation purposes. | electronic copy available by request from the Office of Academic and Student Affairs  |
| 10   | External Review and Report         | Equity in Athletics Disclosure Act Survey                                    | Department of Education  | Federal              | Annually            | 10/15/2017   | All co-educational postsecondary institutions that receive Title IV funding (i.e., those that participate in federal student aid programs) and that have an intercollegiate athletics program report information on student athletics participation, coaching staff and salaries, and athletic program revenue and expenses                               | <a href="http://ope.ed.gov/athletics/#/institution/search">http://ope.ed.gov/athletics/#/institution/search</a>   |
| 11   | External Review and Report         | Annual Energy Consumption Report   | SC Energy Office   | State                | Annually            | 09/15/2017   | To verify progress made toward state energy conservation goals and to assist in statewide energy planning efforts, providing complete annual energy consumption data (including all sources of energy used in campus buildings)   | electronic copy available by request from USCL's Facilities Management  |
| 12   | External Review and Report         | Campus Safety and Security Survey (Clery Act)                                | U. S. Department of Education  | Federal              | Annually            | 10/1/2017  | Includes data on any items required by federal government related to crime, discipline, and safety. Typically data is mined from crime stats, Title IX, safety reports and various campus discipline authorities.   | <a href="https://www.sc.edu/about/system_and_campuses/lancaster/internal/current_students/law_enforcement_security/campus_security_statistics_reports/index.php">https://www.sc.edu/about/system_and_campuses/lancaster/internal/current_students/law_enforcement_security/campus_security_statistics_reports/index.php</a> |
| 13   | External Review and Report         | Swimming Pool Permitting and Compliance                                      | South Carolina Department of Health and Environmental Control                    | State                | Quarterly           | 10/01/2017   | Safety inspection of swimming pool in Gregory Health and Wellness Center  | <a href="https://www.scdhec.gov/">https://www.scdhec.gov/</a>   |
| 14   | External Review and Report         | IPEDS Academic Library Report Survey   | USC Columbia Office of Institutional Research                                    | Federal              | Annually            | 04/06/2017   | A summary of print and electronic materials collections.  | Contact Eric Yang, Ph.D. - Director of Institutional Research   |
| 15   | External Review and Report         | State Library Report   | South Carolina State Library   | State                | Annually            | 01/15/2017   | Summary of employee information, staffing, and print and electronic collections.  | <a href="https://guides.statelibrary.sc.gov/c.php?g=11804&amp;p=529530">https://guides.statelibrary.sc.gov/c.php?g=11804&amp;p=529530</a>   |