

<b>AGENCY NAME:</b>	University of South Carolina - Beaufort		
<b>AGENCY CODE:</b>	H360	<b>SECTION:</b>	10D

## Fiscal Year 2019–2020 Accountability Report

### SUBMISSION FORM

<b>AGENCY MISSION</b>	The University of South Carolina Beaufort (USCB) responds to regional needs, draws upon regional strengths, and prepares graduates to contribute locally, nationally, and internationally with its focus on teaching, research, and service. USCB is a public, comprehensive institution in the University of South Carolina system, offering associate and baccalaureate degrees in the liberal arts, the sciences, and professional disciplines and select master's degrees in response to regional demand through on-site and distance delivery methods. Serving a diverse population, USCB enriches the quality of life for students and area residents through artistic and cultural offerings; collaborations with regional, national, and international partners; and lifelong learning opportunities.
-----------------------	---

<b>AGENCY VISION</b>	The University of South Carolina Beaufort will be a university of academic distinction that is student centered and community engaged.
----------------------	--

Does the agency have any major or minor recommendations (internal or external) that would allow the agency to operate more effectively and efficiently?

	Yes	No
<b>RESTRUCTURING RECOMMENDATIONS:</b>	<input type="checkbox"/>	<input checked="" type="checkbox"/>

Is the agency in compliance with S.C. Code Ann. § 2-1-230, which requires submission of certain reports to the Legislative Services Agency for publication online and to the State Library? See also S.C. Code Ann. § 60-2-30.

	Yes	No
<b>REPORT SUBMISSION COMPLIANCE:</b>	<input checked="" type="checkbox"/>	<input type="checkbox"/>

<b>AGENCY NAME:</b>	<b>University of South Carolina - Beaufort</b>		
<b>AGENCY CODE:</b>	<b>H360</b>	<b>SECTION:</b>	<b>10D</b>

Is the agency in compliance with various requirements to transfer its records, including electronic ones, to the Department of Archives and History? See the Public Records Act (S.C. Code Ann. § 30-1-10 through 30-1-180) and the South Carolina Uniform Electronic Transactions Act (S.C. Code Ann. § 26-6-10 through 26-10-210).

	<b>Yes</b>	<b>No</b>
<b>RECORDS MANAGEMENT COMPLIANCE:</b>	<input checked="" type="checkbox"/>	<input type="checkbox"/>

Is the agency in compliance with S.C. Code Ann. § 1-23-120(J), which requires an agency to conduct a formal review of its regulations every five years?

	<b>Yes</b>	<b>No</b>
<b>REGULATION REVIEW:</b>	<input checked="" type="checkbox"/>	<input type="checkbox"/>

Please identify your agency's preferred contacts for this year's accountability report.

	<b><u>Name</u></b>	<b><u>Phone</u></b>	<b><u>Email</u></b>
<b>PRIMARY CONTACT:</b>	Martha A. Moriarty	843-521-3137	<a href="mailto:moriarty@uscb.edu">moriarty@uscb.edu</a>
<b>SECONDARY CONTACT:</b>	Brian M. Mallory	843-521-4137	<a href="mailto:malloryb@uscb.edu">malloryb@uscb.edu</a>

I have reviewed and approved the enclosed FY 2019–2020 Accountability Report, which is complete and accurate to the extent of my knowledge.

<b>AGENCY DIRECTOR (SIGN AND DATE):</b>	Signature on file
<b>(TYPE/PRINT NAME):</b>	Al M. Panu, Chancellor, University of South Carolina Beaufort

<b>BOARD/CMSN CHAIR (SIGN AND DATE):</b>	Signature on file
<b>(TYPE/PRINT NAME):</b>	C. Dorn Smith III, M.D., Chairman, UofSC Board of Trustees

<b>AGENCY NAME:</b>	<b>University of South Carolina - Beaufort</b>		
<b>AGENCY CODE:</b>	<b>H360</b>	<b>SECTION:</b>	<b>20D</b>

## **AGENCY’S DISCUSSION AND ANALYSIS**

**Together:** At one time; in succession.<sup>1</sup>

*“When we work together, there is nothing the USCB community can’t overcome and become.”*

One of the most intriguing and accurate observations about navigating the COVID-19 pandemic is that, for Fall 2020, “We are all freshmen together.” As is often the case for high school seniors, Fall 2019 was a time of security in a comfortable and known environment and excitement and anticipation for the possibilities and promise of the future. By Spring 2020, that security, excitement, and anticipation turned to uncertainty and a time for necessary, significant, difficult decisions. Summer 2020 brought orientations, trainings, and understanding of the unusual and complicated reality of the Fall semester. Now, at the start of the Fall 2020 semester, everyone at the University of South Carolina Beaufort (USCB)—faculty, staff, and students—is undergoing a time of transition while navigating the newly-developed plans that are in response to the pandemic. Together, USCB faculty, staff, and students will move forward through the semester successfully, because of the commitment to supporting every member of the University community.

**Together:** In or into one place, mass, collection, or group; in a body; as a group.<sup>1</sup>

*“Together on campus, the students approached the semester with excitement and anticipation.”*

As with other schools and Universities across the state, the Fall 2019 semester began like so many others. Both new and continuing students came to the Beaufort, Bluffton, and Hilton Head Island campuses of USCB to begin an exciting new academic year. Fall 2019 enrollment was the largest in USCB history—2,119 undergraduate and graduate students—and the first term for enrollment in USCB’s newly approved MS Computational Science program. The University’s strategic plan was well underway with an implementation process that ran smoothly and was supported by all areas of the Institution. Progress was made on each of the strategic plan objectives in previous years, and USCB was building on that momentum to further its vision to become “a university of academic distinction that is student centered and community engaged.” Little did anyone expect that, in a few months, this

<b>AGENCY NAME:</b>	<b>University of South Carolina - Beaufort</b>		
<b>AGENCY CODE:</b>	<b>H360</b>	<b>SECTION:</b>	<b>20D</b>

would change due to a worldwide pandemic. Due to COVID-19, 2019/2020 became a year of transition and transformation, but also a year that has brought the USCB community closer.

**Together:** With each other. <sup>1</sup>

*“University administrators and public health experts worked together to develop a plan for Spring 2020.”*

Soon after the start of the Spring 2020 semester, COVID-19 became a common term known by and impacting everyone. With COVID-19 came unpredictability, uncertainty, and challenges USCB had not previously experienced. In a matter of weeks, the University was forced to develop a plan to navigate the unpredictability and ensure the safety of students and employees alike. The difficult decision was made to move all classes online early in the semester.

As is the norm at USCB, faculty, staff, and students worked together to make the transition quickly and smoothly to have the least impact on student learning as possible. All classes were restructured so they could be delivered virtually, most often via the Blackboard learning management system. University employees—both faculty and staff—worked from home and, by implementing virtual meetings and communications, the business of the University continued at a steady pace. Courses continued and student evaluations of courses at the end of the semester reflect their positive perceptions of the move to 100% online learning. The Osher Lifelong Learning Institute moved all of its trainings and enrichment opportunities online and maintained strong enrollments and participation.

Despite the work of the University to maintain some semblance of normalcy, however, there were of course repercussions from COVID-19 that meant many of the strategic performance indicator targets set for 2019/2020 were not met. For example, concerns over personal financial well-being led donors to decrease their contributions or stop contributing completely. The development of new programs slowed or stopped temporarily. Spring 2020 experiential learning hours were obviously lower than planned as businesses and agencies where experiential learning took place were either closed or no longer available due to the pandemic. Preliminary Fall 2020 enrollment reflects a significant decline—both in total enrollment and minority and international enrollment—a symptom of the uncertainty around the educational environment for the semester.

<b>AGENCY NAME:</b>	<b>University of South Carolina - Beaufort</b>		
<b>AGENCY CODE:</b>	<b>H360</b>	<b>SECTION:</b>	<b>20D</b>

**Together:** In or into contact, connection, collision, or union; in or into association or relationship. <sup>1</sup>  
*"When combined together, the preparations for Fall 2020 will ensure student success."*

As USCB was moving toward the Fall 2020 semester, it was clearly necessary to begin preparations for a new reality.

- Chancellor Panu charged 15 COVID-19 Response Teams with investigating various aspects of the Fall 2020 return, including the impacts on human resources, facilities, enrollments, academics, health and wellness and finance. These multi-disciplinary subgroups included more than 100 staff, faculty, students, and subject matter experts from across the institution and examined and provided guidance about the potential impacts of COVID-19 on Fall 2020.
- USCB's Director of E-Learning developed a training for faculty—*Getting Ready to Teach Online*. Almost 100 faculty signed up for the six sections of this four week, 40-hour training that presents faculty with best practices for teaching in asynchronous, synchronous, and hybrid online environments. It exposes faculty to best practices in online teaching, prepares them to develop and deliver online courses at the University, and creates a community of faculty prepared to develop and teach high-quality remote learning courses.
- Chancellor Panu and Eric Skipper, Provost & Executive Vice Chancellor of Academic Affairs, hosted regular virtual open meetings to ensure the University community remained abreast of the quickly changing COVID-19 environment and the potential impacts on Fall 2020.
- All classrooms were updated at great expense to ensure they have appropriate technology for face-to-face, synchronous/asynchronous hybrid, and online courses.

**Together:** By combined action; in or into a unified or coherent structure. <sup>1</sup>  
*"Together, the USCB community will come through the pandemic and become stronger."*

Despite the extensive preparations for Fall 2020, there remain innumerable challenges for universities like USCB. The University determined the safest approach for Fall 2020 was one of caution and flexibility. While some courses that were formerly face-to-face have been converted to online, many others have been converted to synchronous or asynchronous hybrid models to

<b>AGENCY NAME:</b>	<b>University of South Carolina - Beaufort</b>		
<b>AGENCY CODE:</b>	<b>H360</b>	<b>SECTION:</b>	<b>20D</b>

accommodate reduced classroom capacities to facilitate social distancing. Other courses—particularly nursing clinicals and science labs—must remain face-to-face because of their necessary hands-on components.

Continued uncertainty about the future of COVID-19 requires the University to monitor the pandemic, remain flexible and agile, and continue reviewing plans that have been created for multiple eventualities. Many of the COVID-19 Response Teams created by the Chancellor will continue to convene throughout the Fall semester and beyond, as needed. USCB’s commitment will ensure that the University continues providing the highest-quality educational, residential, and support services for which it is known, even during this time of uncertainty.

**Risk Assessment and Mitigation Strategies**

As reflected in the USCB Mission statement, the University exists for two groups: its students and the citizens of the Lowcountry of South Carolina. This dual aim defines the fundamental mission of universities historically. Thus, at the core of its mission, the University strives for two things: to graduate well-prepared students and to enhance the quality of life in its service area. If USCB were unable to continue growing its academic programs, enrollments, and continuing education, artistic, and cultural offerings, the impact on the people of the region and the state would be significant. The quality of life in the region would be greatly diminished as the availability of qualified employees entering the workforce decreases, continuing education and lifelong learning opportunities become practically non-existent, and cultural activities that are crucial to the region’s residential and tourist appeal are significantly cut.

Necessary key interventions of the General Assembly that would help prevent such a catastrophe center on financial and capital support. Even before the impact of COVID-19 on the University’s enrollment and associated revenue, historically, USCB has received the lowest state appropriations per in-state student FTE of all SC comprehensive institutions. This is in part an artifact of insufficient state appropriation increases as the institution transformed from a two-year campus to a

<b>AGENCY NAME:</b>	<b>University of South Carolina - Beaufort</b>		
<b>AGENCY CODE:</b>	<b>H360</b>	<b>SECTION:</b>	<b>20D</b>

comprehensive university. Despite the lack of parity, research conducted by Dr. Robert T. Carey, director of the Regional Economic Analysis Laboratory at Clemson University, and Dr. John Salazar, former director of the Lowcountry & Resort Islands Tourism Institute at USCB, estimated USCB’s total economic impact in Beaufort County at \$122.4 million. For comparison, that was more than Beaufort County’s total budget for fiscal year 2017. The University’s impact is significant despite the fact that state funding accounts for a small percentage of the University’s annual budget. Similarly, to continue meeting the demands of USCB’s growing student population, the state should provided capital support for the expansion of classroom and laboratory space and additional faculty office space needed on the Bluffton campus. Without the space required to educate additional students, it will be impossible for USCB to admit a sufficient number of students to fill the region’s education gap.

Despite the strain of committing to expansion in order to meet the needs of its constituents, USCB will continue to support the region’s more than 220-year commitment to affordable higher education. The Lowcountry of South Carolina shows no signs of curtailing its growth, and USCB will remain a key partner in the success of the region, the state, and the nation. While USCB is committed to diversifying its revenue sources and reducing overhead expenditures, additional appropriation and capital support from the state will be essential for USCB to grow and maintain robust student enrollments on each of its unique campuses in Beaufort and Bluffton and on Hilton Head Island.

<sup>1</sup>[www.Merriam-Webster.com](http://www.Merriam-Webster.com)

AGENCY NAME:

University of South Carolina - Beaufort

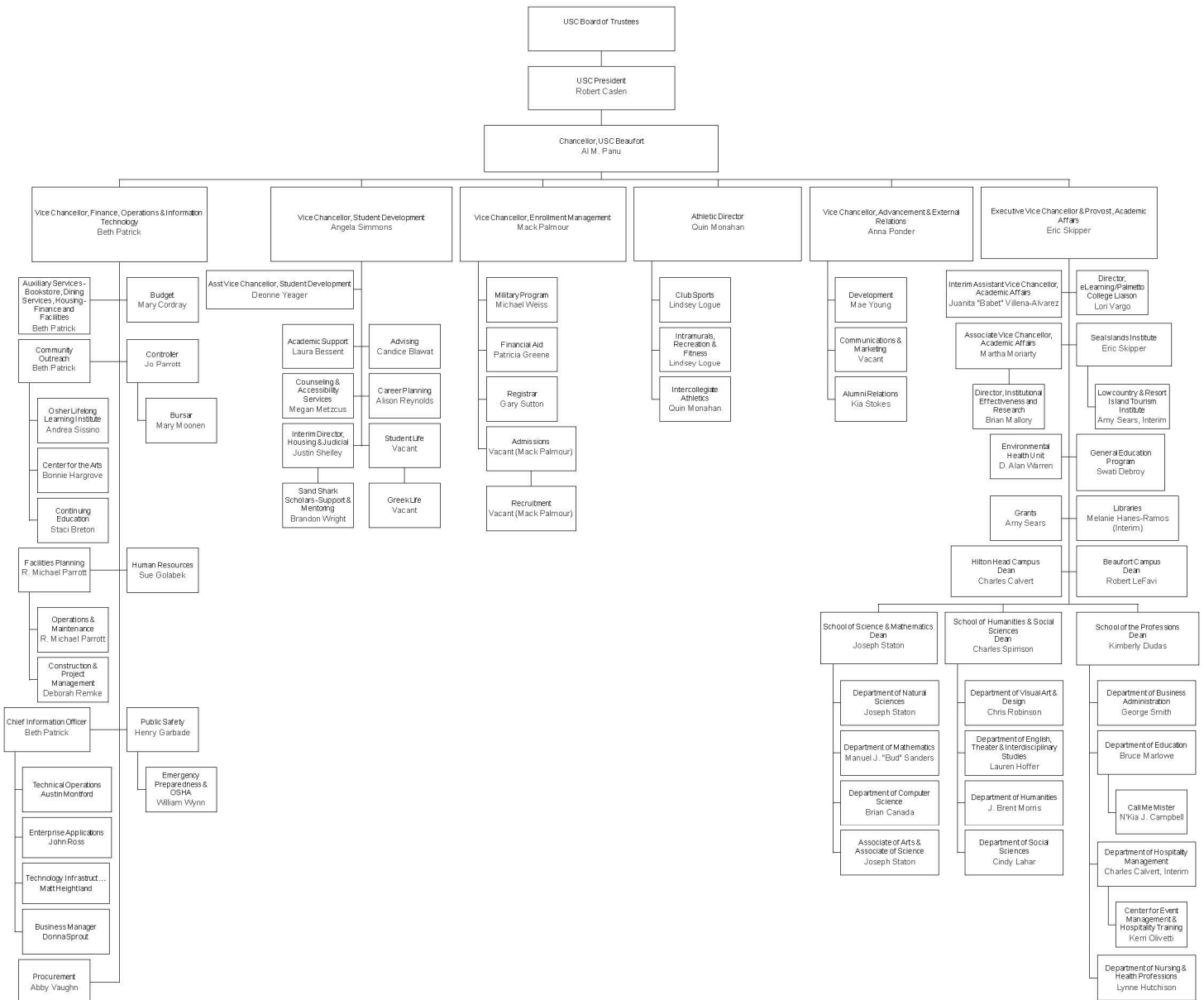
AGENCY CODE:

H360

SECTION:

20D

### University of South Carolina Beaufort Areas of Administrative and Operating Responsibilities



Prepared By USCB Budget Office Aug 1, 2020



Strategic Planning and Performance Measurement Template

Type	Item #			Description	2019-2020			Time Applicable	Data Source and Availability	Calculation Method	Meaningful Use of Measure	
	Goal	Strategy	Measure		Base	Target	Actual					
<b>G</b>	<b>1</b>	<b>Enhance the diversity and inclusivity of the University community.</b>										
<b>S</b>	<b>1.1</b>	<b>Cultivate a more inclusive and diverse environment where students feel free to discuss ideas and broaden their cultural perspective.</b>										
M	1.1.1	Increase minority enrollment	38%	39%	37%	September 1	IER unofficial enrollment reports	% of students of known ethnicity who are not white/caucasian	Indicates increased internationalization and diversity of the student body			
M	1.1.2	Increase international enrollment	21	25	14	September 1	IER unofficial enrollment reports	Count of all students whose CHE Nation is not US	Indicates increased internationalization and diversity of the student body			
<b>G</b>	<b>2</b>	<b>Expand and enhance the rigorous, experiential academic environment.</b>										
<b>S</b>	<b>2.1</b>	<b>Strengthen and develop academic opportunities to meet the needs of a dynamic and changing world.</b>										
M	2.1.1	Increase # of academic programs	23	25	23	September 1	CHE listing updated as needed	Number of majors, including associate, baccalaureate, and master's	Ensures sufficient educational offerings to the Lowcountry and beyond			
M	2.1.2	Grow Beaufort College Honors enrollment	74	85	108	September 1	IER unofficial enrollment reports	Count of all students enrolled in the Honors programs	Provides indication of services offered to academically gifted students			
<b>S</b>	<b>2.2</b>	<b>Offer experiential learning so every graduate will have at least one internship, research, service learning, or applied learning experience to enhance career preparation.</b>										
M	2.2.1	Increase the number of students who participate in at least one experiential learning opportunity	258	300	464	June 1	QEP Co-Directors' data collection and reporting	Count of all students who participated in at least one experiential learning opportunity	Shows movement toward goal of providing experience to all graduates in order to enhance preparation for career			
M	2.2.2	Increase the number of hours students participate in experiential learning activities	29,748	34,500	29,000	June 1	QEP Co-Directors' data collection and reporting	Count of all student hours of experiential learning	Shows movement toward goal of increasing experiential learning activities to enhance preparation for career			
<b>S</b>	<b>2.3</b>	<b>Support faculty development, research, and scholarship to promote excellence and innovation.</b>										
M	2.3.1	Maintain professional development funding for tenure track faculty	1,500	1,500	1,500	July 1-June 30	Academic Affairs budget	PD funding allowed per faculty	Promotes a faculty committed to ongoing research and ensuring current knowledge in their field of study			
M	2.3.2	Maintain professional development funding for tenured faculty	1,000	1,000	1,000	July 1-June 30	Academic Affairs budget	PD funding allowed per faculty	Promotes a faculty committed to ongoing research and ensuring current knowledge in their field of study			

Strategic Planning and Performance Measurement Template

Type	Item #			Description	2019-2020			Time Applicable	Data Source and Availability	Calculation Method	Meaningful Use of Measure
	Goal	Strategy	Measure		Base	Target	Actual				
M		2.3.3		Maintain Sea Islands Institute funding	15,000	15,000	9,377	July 1-June 30	Grants awarded by Sea Islands Institute; updated annually		Promotes a faculty committed to ongoing research and ensuring current knowledge in their field of study
M		2.3.4		Increase research grants	699,063	736,000	676,657	July 1-June 30	Provided by USCB Grants Office	Dollar value of grants awarded annually for research	Promotes a faculty committed to ongoing research and ensuring current knowledge in their field of study
<b>G</b>	<b>3</b>			<b>Continuously improve efficiency and effectiveness of services and processes to support the growth of the university.</b>							
<b>S</b>		<b>3.1</b>		<b>Nurture an environment where institutional functions and processes are constantly improved.</b>							
M		3.1.1		Employee Satisfaction Survey	TBD	TBD	86%	July 1-June 30	USCB New Employee Survey	Average % of respondents who indicated satisfied/very satisfied or comfortable/very comfortable	Promotes the monitoring and improvement of various campus functions.
<b>S</b>		<b>3.2</b>		<b>Explore and implement creative technology to enhance teaching, research, and university operations.</b>							
M		3.2.1		Increase number of online course sections	189	195	160	September 1	IER Data Collection from Fall/Spring	Count of all 100% online courses from Fall/Spring	Online courses reflect appropriate use of technology to meet the needs of 21st century and nontraditional learners
<b>S</b>		<b>3.3</b>		<b>Ensure accountability and transparency.</b>							
M		3.3.1		% of IE-OA reports submitted on time	72%	75%	73%				
M		3.3.2		# of externally accredited programs	3	3	3				
<b>S</b>		<b>3.4</b>		<b>Promote the fiscal and environmental sustainability of the university and each of its campuses: Beaufort, Bluffton, and Hilton Head Island.</b>							
M		3.4.1		Increase student enrollment	2,080	2,122	1,973	September 1	IER unofficial enrollment reports	Count of all students enrolled in at least one course	Indicates increased access to higher education in the region and beyond
<b>G</b>	<b>4</b>			<b>Expand and deepen partnerships with organizations whose mission, goals, and future are enhanced by alignment with the university mission.</b>							
<b>S</b>		<b>4.1</b>		<b>Expand relationships with key government, business, educational and nonprofit entities to provide the resources to create exceptional facilities, systems and infrastructure that will advance the university goals.</b>							

Strategic Planning and Performance Measurement Template

Type	Item #			Description	2019-2020			Time Applicable	Data Source and Availability	Calculation Method	Meaningful Use of Measure
	Goal	Strategy	Measure		Base	Target	Actual				
M		4.1.1		Provide sufficient housing space for students	1,061	1,061	1,061	August 1	Student Development/Housing annual space analysis	Total number of beds at max capacity as opposed to beds in use at any given point	Necessary to engage students with the University and facilitate progression to graduation
M		4.1.2		Maintain or increase total gifts and pledges	1,467,205	547,386	303,438	July 1-June 30	Development updates annually		Provides additional funding to help meet needs not fulfilled by state and tuition dollars
<b>S</b>		<b>4.2</b>		<b>Expand and enhance interactions with the community through cultural events, athletics, lifelong learning, and professional continuing education.</b>							
M		4.2.1		Expand OLLI contact hours	30,481	28,000	29,741	July 1-June 30	Director of Osher Lifelong Learning Institute	Enrollments in each session multiplied by the session length. (10 students in a course that meets 2 hours per week for 3 weeks = 10*2*3=60 contact hours.)	Indicates community engagement and satisfaction with community outreach initiatives
<b>G</b>		<b>5</b>		<b>Equip students for success within the university and beyond graduation.</b>							
<b>S</b>		<b>5.1</b>		<b>Foster a campus culture of collective responsibility for improving student achievement, retention, persistence to graduation, and success beyond the university.</b>							
M		5.1.1		Increase cohort retention	63%	64%	57%	November 1 for previous Fall	IPEDS Fall Enrollment Data	FT FT Freshmen returned divided by FT FT Freshmen Cohort; the 2015/2016 report's "Current Value" is for 2014 cohort returning in Fall 2015.	Shows success of student services as well as students' commitment to USCB as a place to complete their education, not just begin their education
-		5.1.2		Increase 6-year grad rate	32%	33%	31%	November 1 for previous Fall	IER submits students enrolled to IPEDS after the freeze date in late October and IPEDS provides 6-year grad rate based on students submitted 6 years prior.	FTFT Freshmen graduated divided by FT FT Freshmen Cohort; 2015/2016 report's "Current Value" is for 2009 cohort graduating by Summer 2015.	Shows success of student services as well as students' commitment to USCB as a place to complete their education, not just begin their education

Strategic Planning and Performance Measurement Template

Type	Item #			Description	2019-2020			Time Applicable	Data Source and Availability	Calculation Method	Meaningful Use of Measure
	Goal	Strategy	Measure		Base	Target	Actual				
-	5.1.3			Increase degrees awarded	378	380	365	Fall	USC OIRA data and USCBA Registrar data available following Fall	Includes Summer, Fall, and Spring graduates from previous academic year. 2018/2019 "Base" is for 2017/2018 academic year.	Shows success of student services as well as students' commitment to USCBA as a place to complete their education, not just begin their education
-	5.1.4			Increase transfer grad rate	52%	53%	48%	November 1 for previous Fall	IER enrollment and graduation files	Transfer Students graduated from USCBA divided by Transfer Student Cohort; for example, the 2015/16 "Current Value" is for students transferring to USCBA in Fall 2009 and graduating by Summer 2015.	Shows success of student services as well as students' commitment to USCBA as a place to complete their education, not just begin their education
-	5.1.5			Increase job placement	Deleted			Fall	USCBA Career Services Survey completed 6 mos after graduation	% of respondents who are employed or seeking employment who indicate they have "Full-time, Degree-related" employment. Spring, Summer, Fall	Improves the image of the University as an educational institution who prepares graduates to contribute to the community

Strategic Planning and Performance Measurement Template

Type	Item #			Description	2020-2021			Time Applicable	Data Source and Availability	Calculation Method	Meaningful Use of Measure
	Goal	Strategy	Measure		Base	Target	Actual				
<b>G</b>	<b>1</b>			<b>Enhance the diversity and inclusivity of the University community.</b>							
<b>S</b>	<b>1.1</b>			<b>Cultivate a more inclusive and diverse environment where students feel</b>							
M		1.1.1	Increase minority enrollment	37%	39%		September 1	IER unofficial enrollment reports	% of students for current fall term of known ethnicity who are not white/caucasian	Indicates increased internationalization and diversity of the student body	
M		1.1.2	Increase international enrollment	14	25		September 1	IER unofficial enrollment reports	Count of all students for current fall term whose CHE Nation is not US	Indicates increased internationalization and diversity of the student body	
<b>G</b>	<b>2</b>			<b>Expand and enhance the rigorous, experiential academic environment.</b>							
<b>S</b>	<b>2.1</b>			<b>Strengthen and develop academic opportunities to meet the needs of a</b>							
M		2.1.1	Increase # of academic programs	23	25		September 1	CHE listing updated as needed	Number of majors, including associate, baccalaureate, and master's	Ensures sufficient educational offerings to the Lowcountry and beyond	
M		2.1.2	Grow Beaufort College Honors enrollment	108	133		September 1	IER unofficial enrollment reports	Count of all students enrolled in the Honors programs	Provides indication of services offered to academically gifted students	
<b>S</b>	<b>2.2</b>			<b>Offer experiential learning so every graduate will have at least one</b>							
M		2.2.1	Increase the number of students who participate in at least one experiential learning opportunity	464	550		June 1	QEP Co-Directors' data collection and reporting	Count of all students who participated in at least one experiential learning opportunity	Shows movement toward goal of providing experience to all graduates in order to enhance preparation for career	
M		2.2.2	Increase the number of hours students participate in experiential learning activities	29,000	34,500		June 1	QEP Co-Directors' data collection and reporting	Count of all student hours of experiential learning	Shows movement toward goal of increasing experiential learning activities to enhance preparation for career	
<b>S</b>	<b>2.3</b>			<b>Support faculty development, research, and scholarship to promote</b>							
M		2.3.1	Maintain professional development funding for tenure track faculty	1,500	1,500		July 1-June 30	Academic Affairs budget	PD funding allowed per faculty	Promotes a faculty committed to ongoing research and ensuring current knowledge in their field of study	
M		2.3.2	Maintain professional development funding for tenured faculty	1,000	1,000		July 1-June 30	Academic Affairs budget	PD funding allowed per faculty	Promotes a faculty committed to ongoing research and ensuring current knowledge in their field of study	
M		2.3.3	Maintain Sea Islands Institute funding	9,377	15,000		July 1-June 30	Grants awarded by Sea Islands Institute; updated annually		Promotes a faculty committed to ongoing research and ensuring current knowledge in their field of study	

H360 Section: 20D

Strategic Planning and Performance Measurement Template

Type	Item #			Description	2020-2021			Time Applicable	Data Source and Availability	Calculation Method	Meaningful Use of Measure
	Goal	Strategy	Measure		Base	Target	Actual				
M		2.3.4		Increase research grants	676,657	740,000		July 1-June 30	Provided by USCB Grants Office	Dollar value of grants awarded annually for research	Promotes a faculty committed to ongoing research and ensuring current knowledge in their field of study
<b>G</b>	<b>3</b>	<b>Continuously improve efficiency and effectiveness of services and processes</b>									
<b>S</b>		<b>3.1</b>	<b>Nurture an environment where institutional functions and processes are</b>								
M		3.1.1		Employee Satisfaction Survey	86%	90%		July 1-June 30	USCB New Employee Survey	Average % of respondents who indicated satisfied/very satisfied or comfortable/very comfortable	Promotes the monitoring and improvement of various campus functions.
<b>S</b>		<b>3.2</b>	<b>Explore and implement creative technology to enhance teaching,</b>								
M		3.2.1		Increase number of online course sections	160	180		September 1	IER Data Collection from Fall/Spring	Count of all 100% online courses from Fall/Spring	Online courses reflect appropriate use of technology to meet the needs of 21st century and nontraditional learners
<b>S</b>		<b>3.3</b>	<b>Ensure accountability and transparency.</b>								
M		3.3.1		% of IE-OA reports submitted on time	73%	75%					
M		3.3.2		# of externally accredited programs	3	3					
<b>S</b>		<b>3.4</b>	<b>Promote the fiscal and environmental sustainability of the university and</b>								
M		3.4.1		Increase student enrollment	1,973	2,000		September 1	IER unofficial enrollment reports	Count of all students enrolled in at least one course	Indicates increased access to higher education in the region and beyond
<b>G</b>	<b>4</b>	<b>Expand and deepen partnerships with organizations whose mission, goals,</b>									
<b>S</b>		<b>4.1</b>	<b>Expand relationships with key government, business, educational and</b>								
M		4.1.1		Provide sufficient housing space for students	1,061	1,061		August 1	Student Development/Housing annual space analysis	Total number of beds at max capacity as opposed to beds in use at any given point	Necessary to engage students with the University and facilitate progression to graduation
M		4.1.2		Maintain or increase total gifts and pledges	303,438	550,000		July 1-June 30	Development updates annually		Provides additional funding to help meet needs not fulfilled by state and tuition dollars
<b>S</b>		<b>4.2</b>	<b>Expand and enhance interactions with the community through cultural</b>								
M		4.2.1		Expand OLLI contact hours	29,741	20,000		July 1-June 30	Director of Osher Lifelong Learning Institute	Enrollments in each session multiplied by the session length. (10 students in a course that meets 2 hours per week for 3 weeks = 10*2*3=60 contact hours.)	Indicates community engagement and satisfaction with community outreach initiatives

Strategic Planning and Performance Measurement Template

Type	Item #			Description	2020-2021			Time Applicable	Data Source and Availability	Calculation Method	Meaningful Use of Measure
	Goal	Strategy	Measure		Base	Target	Actual				
G	5			Equip students for success within the university and beyond graduation.							
S	5.1			Foster a campus culture of collective responsibility for improving student							
M		5.1.1		Increase cohort retention	57%	60%		November 1 for previous Fall	IPEDS Fall Enrollment Data	FT FT Freshmen returned divided by FT FT Freshmen Cohort; the 2015/2016 report's "Current Value" is for 2014 cohort returning in Fall 2015.	Shows success of student services as well as students' commitment to USCB as a place to complete their education, not just begin their education
-		5.1.2		Increase 6-year grad rate	31%	32%		November 1 for previous Fall	IER submits students enrolled to IPEDS after the freeze date in late October and IPEDS provides 6-year grad rate based on students submitted 6 years prior.	FTFT Freshmen graduated divided by FT FT Freshmen Cohort; 2015/2016 report's "Current Value" is for 2009 cohort graduating by Summer 2015.	Shows success of student services as well as students' commitment to USCB as a place to complete their education, not just begin their education
-		5.1.3		Increase degrees awarded	365	380		Fall	USC OIRA data and USCB Registrar data available following Fall	Includes Summer, Fall, and Spring graduates from previous academic year. 2018/2019 "Base" is for 2017/2018 academic year.	Shows success of student services as well as students' commitment to USCB as a place to complete their education, not just begin their education
-		5.1.4		Increase transfer grad rate	48%	50%		November 1 for previous Fall	IER enrollment and graduation files	Transfer Students graduated from USCB divided by Transfer Student Cohort; for example, the 2015/16 "Current Value" is for students transferring to USCB in Fall 2009 and graduating by Summer 2015.	Shows success of student services as well as students' commitment to USCB as a place to complete their education, not just begin their education

Agency Name: UNIVERSITY OF SOUTH CAROLINA - BEAUFORT

Fiscal Year 2019-2020  
Accountability Report

Agency Code: H360 Section: 20D

Program Template

Program/Title	Purpose	FY 2019-20 Expenditures (Actual)				FY 2020-21 Expenditures (Projected)				Associated Measure(s)
		General	Other	Federal	TOTAL	General	Other	Federal	TOTAL	
I.A. Unrestricted E&G	Activities that directly support the primary mission of the University to educate the state's diverse citizens through teaching, research and creative activity and service. Current fund resources received by an institution that have no limitations or stipulations placed on them by external agencies or donors, and that have not been set aside for loans, endowments, or plant. These resources are normally derived from state appropriations, student fees, and institutional revenues.	\$ 5,747,928	\$ 12,546,214	\$ -	\$ 18,294,142	\$ 5,233,920	\$ 17,479,370	\$ -	\$ 22,713,290	
I.B. Restricted E&G	Activities that directly support the primary mission of the University to educate the state's diverse citizens through teaching, research and creative activity and service. Current fund resources received by an institution that have limitations or stipulations placed on their use by external agencies or donors. These resources are normally derived from gifts, grants, and contracts and used predominantly for research and student scholarship activities.	\$ -	\$ 4,980,534	\$ 5,423,105	\$ 10,403,639	\$ -	\$ 4,830,675	\$ 5,339,224	\$ 10,169,899	
II. Auxiliary Services	Self-supporting activities that exist to furnish goods and services to students, faculty, or staff, and charge a fee directly related to the cost of the goods or services. These activities include student health, student housing, food service, bookstore, vending and concessions, athletics, parking, and other services.	\$ -	\$ 1,998	\$ -	\$ 1,998	\$ -	\$ 30,000	\$ -	\$ 30,000	
III. C. Employee Benefits: State Employer Contributions	Fringe Benefits associated with Salaries reflected in the figures and categories above. Includes State Retirement, FICA, State Health Plan Premiums, Unemployment Compensation and Workers Compensation.	\$ 730,228	\$ 5,664,596	\$ 27,452	\$ 6,422,276	\$ 730,228	\$ 4,966,966	\$ 138,691	\$ 5,835,885	



Agency Name: UNIVERSITY OF SOUTH CAROLINA - BEAUFORT

Fiscal Year 2019-2020  
Accountability Report

Agency Code: H360 Section: 20D

Program Template

Program/Title	Purpose	<i>FY 2019-20 Expenditures (Actual)</i>				<i>FY 2020-21 Expenditures (Projected)</i>				Associated Measure(s)
		General	Other	Federal	TOTAL	General	Other	Federal	TOTAL	
					\$ -				\$ -	
Total		\$ 6,478,156	\$ 23,193,342	\$ 5,450,557	\$ 35,122,055	\$ 5,964,148	\$ 27,307,011	\$ 5,477,915	\$ 38,749,074	
					\$ -				\$ -	
					\$ -				\$ -	
					\$ -				\$ -	

Agency Name: UNIVERSITY OF SOUTH CAROLINA - BEAUFORT

Fiscal Year 2019-2020

Accountability Report

Agency Code: H360 Section: 20D

Legal Standards Template

Item #	Law Number	Jurisdiction	Type of Law	Statutory Requirement and/or Authority Granted	Does this law specify who your agency must or may serve? (Y/N)	Does the law specify a product or service your agency must or may provide?	If yes, what type of service or product?	If other service or product, please specify what service or product.
1	Coronavirus Aid, Relief, and Economic Security (CARES) Act Section 18004(a)(1)	Federal	Statute	Allocations of CARES Act funding in response to COVID-19	No	No - But relates to sources of funding for one or more agency deliverables		
2	20 U.S.C. 1015a(a), 20 U.S.C. 1015a(h))	Federal	Statute	Requires institutions to make available on their websites a net price calculator	No	Yes	Report our agency must/may provide	
3	20 U.S.C. 1015a(i)(1)(V)	Federal	Statute	Requirement to post specified items on the U.S. Department of Education's College Navigator website.	No	Yes	Report our agency must/may provide	
4	20 USC 1094, Section 487(a)(17)	Federal	Statute	Mandates the completion of IPEDS surveys in a timely and accurate manner for institutions participating in Federal financial assistance programs	No	Yes	Report our agency must/may provide	
5	Americans with Disabilities Act Title II	Federal	Statute	Anti-discrimination under any education program or activity receiving Federal financial assistance	Yes	No - But relates to manner in which one or more agency deliverables is provided		
6	Civil Rights Act Title VII	Federal	Statute	Prohibits employment discrimination	Yes	No - But relates to manner in which one or more agency deliverables is provided		
7	Education Amendments Act Title IX	Federal	Statute	Anti-discrimination under any education program or activity receiving Federal financial assistance	Yes	No - But relates to manner in which one or more agency deliverables is provided		
8	HEOA Sec. 107	Federal	Statute	Requires institutions to distribute in writing to each student and each employee standards of conduct that clearly prohibit the unlawful possession, use, or distribution of illicit drugs and alcohol by students and employees on the institution's property or as part of any of the institution's activities; description of applicable legal sanctions under state, local, and federal law description of health risks; description of available counseling, treatment, rehabilitation, or re-entry programs; and clear statement that institution will impose sanctions for violation of standards of conduct and a description of the sanctions; requires a biennial review of the effectiveness of the institution's drug and alcohol abuse prevention program	Yes	Yes	Report our agency must/may provide	
9	HEOA Sec. 112	Federal	Statute	Requires that the ISBN and retail price information of required and recommended textbooks and supplemental material be made available to students at the time of course registration; also requires disclosure of other course related metrics such as the number of students enrolled and the maximum number of students to be enrolled in the class	Yes	Yes	Report our agency must/may provide	
10	HEOA Sec. 201	Federal	Statute	Requires the submission of an annual Teacher Preparation Program Report through the state to the U.S. Department of Education	No	Yes	Report our agency must/may provide	
11	HEOA Sec. 488(a)(1)(E)	Federal	Statute	Requires institutions to make available to prospective and enrolled students information about student diversity	Yes	Yes	Report our agency must/may provide	
12	HEOA Sec. 488(a)(1)(E)	Federal	Statute	Requires the Institution to annually make available to current and prospective students the institution's policies and sanctions related to copyright infringement, computer use and file sharing	Yes	Yes	Report our agency must/may provide	
13	HEOA Sec. 488(a)(1)(E)	Federal	Statute	Requires institutions to make available to current and prospective students information about institutional policies regarding vaccinations	Yes	Yes	Other service or product our agency must/may provide	Enrollment Management services
14	HEOA Sec. 488(a)(1)(E)	Federal	Statute	Requires that institutions make available to current and prospective students the retention rate of certificate- or degree-seeking, first-time, undergraduate students	Yes	Yes	Report our agency must/may provide	
15	HEOA Sec. 488(a)(1)(E)	Federal	Statute	Requires that institutions make available to current and prospective students information regarding the types of graduate and professional education in which graduates of the institution's 4-year degree programs enrolled	Yes	Yes	Report our agency must/may provide	

16	HEOA Sec. 488(a)(1)(E)	Federal	Statute	Requirements of a fire safety report and fire log	No	Yes	Report our agency must/may provide	
	HEOA Sec. 488(a)(1)(E)	Federal	Statute	Specifies that institutions must make available to current and prospective students information regarding the placement in employment of, and types of employment obtained by, graduates of the institution's degree or certificate programs if those rates have been calculated	Yes	Yes	Report our agency must/may provide	
17								
18	HEOA Sec. 488(a)(2)-(3)	Federal	Statute	Requires that institution must annually make available to prospective and enrolled students the 150% completion or graduation rate and transfer-out rates of certificate- or degree-seeking, first-time, fulltime, undergraduate students. The graduation rates must be disaggregated by gender, major racial and ethnic subgroup [as defined in IPEDS], recipients of a Federal Pell Grant, recipients of a subsidized Stafford Loan who did not receive a Pell Grant, and students who did not receive either a Pell Grant or a subsidized Stafford Loan	Yes	Yes	Report our agency must/may provide	
19	HEOA Sec. 488(a)(3), Sec. 488(d)	Federal	Statute	Specifies the requirements of a report on the completion, graduation, and transfer out rates of NCAA student athletes receiving athletically related student aid	No	Yes	Report our agency must/may provide	
20	HEOA Sec. 488(b)	Federal	Statute	Specifies the details of required exit counseling to borrowers of loans under the FFEL, Federal Direct Loan, or Perkins Loan programs	Yes	Yes	Other service or product our agency must/may provide	Financial Aid services
21	HEOA Sec. 488(c)	Federal	Statute	Requires institutions to provide information about rights and responsibilities of students and institutions under Title IV, HEA loan programs to students at any time that information regarding loan availability is provided	Yes	Yes	Other service or product our agency must/may provide	Financial Aid services
22	HEOA Sec. 488(e)(1)(B)-(D)	Federal	Statute	Requires for an annual security report that includes emergency response and evacuation procedures, timely warning and a crime log	Yes	Yes	Report our agency must/may provide	
23	HEOA Sec. 488(g)	Federal	Statute	Requires the institution to publicly disclose information about the institution's policies regarding the transfer of credit and articulation agreements	No	Yes	Report our agency must/may provide	
24	HEOA Sec. 488(g)	Federal	Statute	Requires institutions to have a policy in place regarding notification procedures for missing students for those residing in on-campus student housing facilities	Yes	Yes	Report our agency must/may provide	
25	HEOA Sec. 488(g)	Federal	Statute	Specifies the details of disclosure required prior to the disbursement of Federal Direct loans or Parent PLUS loans	Yes	Yes	Other service or product our agency must/may provide	Financial Aid services
26	HEOA Sec. 489	Federal	Statute	Requires that potential students, students and parents of students who receive a Title IV loan be informed that details of the loan will be submitted to the National Student Loan Data System and will be accessible by guaranty agencies, lenders, and institutions determined to be authorized users of the data system	Yes	Yes	Report our agency must/may provide	
27	HEOA Sec. 493(a)(1)	Federal	Statute	Specifies the details of disclosure required of institutions or institution-affiliated organizations (e.g., alumni organizations, foundations) that provide information regarding a private education loan from a lender to a prospective borrower	Yes	Yes	Other service or product our agency must/may provide	Financial Aid and Business/Accounting services
28	HEOA Sec. 493(a)(1)	Federal	Statute	Requires institutions to make a good faith effort to distribute mail voter registration forms for Federal and State elections	Yes	Yes	Other service or product our agency must/may provide	Voter registration services
29	HEOA Sec. 493(a)(1)(A)	Federal	Statute	Requires the institution to disclose to the alleged victim of any crime of violence, or a nonforcible sex offense, the results of any disciplinary proceeding conducted by the institution against a student who is the alleged perpetrator of such crime or offense	Yes	Yes	Report our agency must/may provide	
30	HEOA Sec. 493(a)(1), Sec. 493(c)	Federal	Statute	Specifies the disclosure of terms and conditions and code of conduct for agents of an institution that provides educational loans	No	Yes	Other service or product our agency must/may provide	Financial Aid and Business/Accounting services
31	OSH Act of 1970	Federal	Statute	Requirements to provide a safe and healthful workplace free of serious recognized hazards	Yes	Yes	Other service or product our agency must/may provide	Safety services
32	P.L. 109-270, Section 421(a)(1)	Federal	Statute	Mandates the collection and reporting of racial and ethnic data of students to the Department of Education for institutions participating in Federal financial assistance programs	No	Yes	Report our agency must/may provide	
33	34 C.F.R. 668.41(a)-(d), 34 C.F.R. 668.43	Federal	Regulation	Requirement to make available to prospective and enrolled students information about facilities and services available to individuals with disabilities	Yes	Yes	Report our agency must/may provide	
34	29 C.F.R. 1602, subparts O, P, and Q	Federal	Regulation	Mandates the collection and reporting of racial and ethnic data for Institutional staff to the Department of Education for institutions participating in Federal financial assistance programs	No	Yes	Report our agency must/may provide	
35	34 C.F.R. 668 Sections 43-44	Federal	Regulation	Must make available to prospective and enrolled students information regarding how and where to contact individuals designated to assist enrolled or prospective students in obtaining the institutional or financial aid information	Yes	Yes	Report our agency must/may provide	
36	34 C.F.R. 668.40	Federal	Regulation	Requirement that students be notified that drug law violations will result in a loss of eligibility for any Title IV, HEA grant, loan, or work-study assistance	Yes	Yes	Report our agency must/may provide	
37	34 C.F.R. 668.41 (a)-(d), 34 C.F.R. 668.42, 34 C.F.R. 668.43	Federal	Regulation	Requires institutions to make available to prospective and enrolled students information about financial aid	Yes	Yes	Report our agency must/may provide	

38	34 C.F.R. 668.41(a) (d), 34 C.F.R. 668.43	Federal	Regulation	Requires institutions to make available to prospective and enrolled students information about the price of attendance, including tuition and fees, books and supplies, room and board, transportation costs, and any additional costs for a program in which the student is enrolled or expresses an interest.	Yes	Yes	Report our agency must/may provide	
39	34 C.F.R. 668.41(a)-(d), 34 C.F.R. 668.43	Federal	Regulation	Requires institutions to make available to prospective and enrolled students information related to refund policies, procedures for official withdrawal and requirements to return Title IV grants or loan aid	Yes	Yes	Report our agency must/may provide	
40	34 C.F.R. 668.41(a)-(d), 34 C.F.R. 668.43	Federal	Regulation	Requires the institution to make available to prospective and enrolled students the names of associations, agencies, or governmental bodies that accredit, approve, or license the institution and its programs; and procedures for obtaining or reviewing documents describing accreditation, approval, or licensing.	Yes	Yes	Report our agency must/may provide	
41	34 C.F.R. 668.41(c)	Federal	Regulation	Requires an annual notice identifying the availability of institutional and financial aid information as required under FERPA	Yes	Yes	Report our agency must/may provide	
42	34 C.F.R. 668.41(c), 34 C.F.R. Part 99	Federal	Regulation	Requirement to inform students of their rights to privacy of student records, what information is included in publically available directories, and how the student can refuse to allow the release of information	Yes	Yes	Report our agency must/may provide	
43	34 C.F.R. Part 106.9	Federal	Regulation	Requirements to ensure nondiscrimination on the basis of sex of students and employees of educational institutions that receive federal financial assistance	Yes	No - But relates to manner in which one or more agency deliverables is provided		
44	34 CFR 668.14(b)(11)	Federal	Regulation	Requires that institutions inform all eligible borrowers enrolled in the institution about the availability of and their eligibility for grant assistance from the state in which the institution is located, and provide sources of information about grant assistance from other states to borrowers from other states	Yes	Yes	Other service or product our agency must/may provide	Financial Aid services
45	34 CFR 668.41(a)-(d), 34 CFR 668.43	Federal	Regulation	Requires the institution to make available to prospective and enrolled students information about the academic program of the institution, including current degree programs; instructional, laboratory, and other physical facilities that relate to the academic program; faculty and other instructional personnel; and any plans by the institution for improving the academic programs	Yes	Yes	Report our agency must/may provide	
46	34 CFR 668-41(a)-(b), 34 CFR 668.41(g), 34 CFR 668.47	Federal	Regulation	Specifies the details of reports to be submitted to the U.S. Department of Education and the information to be given to current and prospective students about the gender breakdown of the student body, the intercollegiate athletic teams, revenue and expenditures associated with athletics, and salary of coaches	Yes	Yes	Report our agency must/may provide	
47	§ 11-35-10	State	Statute	Specifies procedures for procurement of goods and services	Yes	Yes	Other service or product our agency must/may provide	Procurement Services
48	§ 1-1-550 of SC Code of Laws	State	Statute	Qualified honorably discharged veterans have preference for employment	No	No - But relates to manner in which one or more agency deliverables is provided		
49	§ 1-1-810 of SC Code of Laws	State	Statute	Annual accountability report to be submitted to the Governor and General Assembly	No	Yes	Report our agency must/may provide	
50	§ 1-1-820 of SC Code of Laws	State	Statute	Required content of annual accountability reports	No	Yes	Report our agency must/may provide	
51	§ 13-17-10	State	Statute	Establishment and requirements of the South Carolina Research Authority to facilitate research activities at institutions of higher education	No	Yes	Other service or product our agency must/may provide	Research, activities
52	§ 44-96-80	State	Statute	Requires the submission of an annual report of recycling data to be submitted to DHEC	No	Yes	Report our agency must/may provide	
53	§ 48-52-620 of SC Code of Laws	State	Statute	Requires public colleges and universities to develop energy conservation plans and to reduce energy consumption by 20% by 2020	No	Yes	Report our agency must/may provide	
54	§ 59-101-10	State	Statute	Statutory recognition of colleges and institutions of higher learning	Yes	Yes	Other service or product our agency must/may provide	Teaching, research and service
55	§ 59-101-210 (A)(1) of SC Code of Laws	State	Statute	Requires public colleges and universities to maintain a report of violations of the institution's Conduct of Student Organizations by fraternity and sorority organizations formally affiliated with the institution	Yes	Yes	Report our agency must/may provide	
56	§ 59-102-10	State	Statute	Statutory requirements for student athletes	Yes	Yes	Other service or product our agency must/may provide	Student and athletic services

57	§ 59-103-5	State	Statute	Establishment of the State Commission on Higher Education with authority over public supported higher education in the State	No	No - But relates to manner in which one or more agency deliverables is provided	
58	§ 59-104-10	State	Statute	Meeting of admissions pre-requisites, Palmetto Scholarship program, competitive grants, Governor's Professor of the Year recognition, endowed professorship programs, accountability through assessment and planning, institutional effectiveness requirements	Yes	Yes	Report our agency must/may provide
59	§ 59-105-10	State	Statute	Statutory requirements for a comprehensive sexual assault policy to address prevention and awareness of sexual assault	Yes	No - But relates to manner in which one or more agency deliverables is provided	
60	§ 59-106-10	State	Statute	Statutory requirements for inclusion of information regarding registered sex offenders in annual security reports	Yes	Yes	Report our agency must/may provide
61	§ 59-107-10	State	Statute	Statutory requirements regarding remittance and application of tuition fees for permanent improvements and other expenses, regulations for issuance of State institution bonds	No	Yes	Other service or product our agency must/may provide Business/Accounting services
62	§ 59-110-10	State	Statute	Statutory requirements for incentives to retain and attract new nurse faculty and to provide technology to increase accessibility to clinical education needs	Yes	Yes	Other service or product our agency must/may provide HR / Payroll services
63	§ 59-111-10	State	Statute	State scholarships and loan programs	Yes	Yes	Other service or product our agency must/may provide Financial Aid and Business/Accounting services
64	§ 59-112-10	State	Statute	Requirements for determination of tuition and fee rates and abatements	Yes	Yes	Other service or product our agency must/may provide Business/Accounting services
65	§ 59-113-10	State	Statute	Requirements for tuition grants	Yes	Yes	Other service or product our agency must/may provide Financial Aid and Business/Accounting services
66	§ 59-114-10	State	Statute	National Guard College Assistance requirements	Yes	Yes	Other service or product our agency must/may provide Financial Aid and Business/Accounting services
67	§ 59-115-10	State	Statute	Authority and requirements for state student loans	Yes	Yes	Other service or product our agency must/may provide Financial Aid and Business/Accounting services
68	§ 59-116-10	State	Statute	Authority and requirements for campus police	Yes	Yes	Other service or product our agency must/may provide Campus Police
69	§ 59-117-10	State	Statute	Statutory authority for the University of South Carolina and its governance by a board of trustees	No	Yes	Other service or product our agency must/may provide Research, Teaching and Public Service
70	§ 59-118-10	State	Statute	Statutory requirements over academic endowments	Yes	Yes	Other service or product our agency must/may provide Business/Accounting services
71	§ 59-142-10	State	Statute	Statutory authority and requirements for state need-based grants	Yes	Yes	Other service or product our agency must/may provide Financial Aid and Business/Accounting services
72	§ 59-143-10	State	Statute	Establishment of a state educational endowment to fund grants and scholarship programs	Yes	Yes	Other service or product our agency must/may provide Financial Aid and Business/Accounting services
73	§ 59-147-10	State	Statute	Requirements for higher education revenue bonds	No	Yes	Other service or product our agency must/may provide Business/Accounting services
74	§ 59-149-10	State	Statute	Authorization and requirements for the LIFE Scholarship program	Yes	Yes	Other service or product our agency must/may provide Financial Aid and Business/Accounting services
75	§ 59-150-10	State	Statute	Use of Lottery funds in support of higher education	Yes	No - But relates to sources of funding for one or more agency deliverables	
76	§ 59-26-10	State	Statute	Establishes requirements and standards relating to the teacher education programs	Yes	Yes	Other service or product our agency must/may provide Teacher ed programs
77	§ 59-56-20(A) of SC Code of Laws	State	Statute	Creates the Beaufort-Jasper Higher Education Commission	No	No - Does not relate directly to any agency deliverables	
78	§ 9-1-10	State	Statute	Retirement system for employees	No	Yes	Distribute funding to another entity
79	§ 9-1-1910	State	Statute	Retirement system for employees	No	Yes	Distribute funding to another entity
80	§ 9-1-1920	State	Statute	Retirement system for employees	No	Yes	Distribute funding to another entity
81	§ 9-1-1930	State	Statute	Retirement system for employees	No	Yes	Distribute funding to another entity
82	§ 9-1-1940	State	Statute	Retirement system for employees	No	Yes	Distribute funding to another entity
83	§ 9-1-1950	State	Statute	Retirement system for employees	No	Yes	Distribute funding to another entity
84	§ 9-1-1960	State	Statute	Retirement system for employees	No	Yes	Distribute funding to another entity
85	§ 9-1-1970	State	Statute	Retirement system for employees	No	Yes	Distribute funding to another entity

















285	59-102-100	State	Statute	Statutory requirements for student athletes	Yes	Yes	Other service or product our agency must/may provide	Student and athletic services
286	59-102-110	State	Statute	Statutory requirements for student athletes	Yes	Yes	Other service or product our agency must/may provide	Student and athletic services
287	59-102-120	State	Statute	Statutory requirements for student athletes	Yes	Yes	Other service or product our agency must/may provide	Student and athletic services
288	59-102-130	State	Statute	Statutory requirements for student athletes	Yes	Yes	Other service or product our agency must/may provide	Student and athletic services
289	59-102-140	State	Statute	Statutory requirements for student athletes	Yes	Yes	Other service or product our agency must/may provide	Student and athletic services
290	59-102-150	State	Statute	Statutory requirements for student athletes	Yes	Yes	Other service or product our agency must/may provide	Student and athletic services
291	59-102-160	State	Statute	Statutory requirements for student athletes	Yes	Yes	Other service or product our agency must/may provide	Student and athletic services
292	59-102-170	State	Statute	Statutory requirements for student athletes	Yes	Yes	Other service or product our agency must/may provide	Student and athletic services
293	59-102-180	State	Statute	Statutory requirements for student athletes	Yes	Yes	Other service or product our agency must/may provide	Student and athletic services
294	59-102-190	State	Statute	Statutory requirements for student athletes	Yes	Yes	Other service or product our agency must/may provide	Student and athletic services
295	59-102-20	State	Statute	Statutory requirements for student athletes	Yes	Yes	Other service or product our agency must/may provide	Student and athletic services
296	59-102-30	State	Statute	Statutory requirements for student athletes	Yes	Yes	Other service or product our agency must/may provide	Student and athletic services
297	59-102-40	State	Statute	Statutory requirements for student athletes	Yes	Yes	Other service or product our agency must/may provide	Student and athletic services
298	59-102-50	State	Statute	Statutory requirements for student athletes	Yes	Yes	Other service or product our agency must/may provide	Student and athletic services
299	59-102-60	State	Statute	Statutory requirements for student athletes	Yes	Yes	Other service or product our agency must/may provide	Student and athletic services
300	59-102-70	State	Statute	Statutory requirements for student athletes	Yes	Yes	Other service or product our agency must/may provide	Student and athletic services
301	59-102-80	State	Statute	Statutory requirements for student athletes	Yes	Yes	Other service or product our agency must/may provide	Student and athletic services
302	59-102-90	State	Statute	Statutory requirements for student athletes	Yes	Yes	Other service or product our agency must/may provide	Student and athletic services
303	59-103-10	State	Statute	Establishment of the State Commission on Higher Education with authority over public supported higher education in the State	No	No - But relates to manner in which one or more agency deliverables is provided		
304	59-103-100	State	Statute	Establishment of the State Commission on Higher Education with authority over public supported higher education in the State	No	No - But relates to manner in which one or more agency deliverables is provided		
305	59-103-110	State	Statute	Establishment of the State Commission on Higher Education with authority over public supported higher education in the State	No	No - But relates to manner in which one or more agency deliverables is provided		
306	59-103-120	State	Statute	Establishment of the State Commission on Higher Education with authority over public supported higher education in the State	No	No - But relates to manner in which one or more agency deliverables is provided		
307	59-103-130	State	Statute	Establishment of the State Commission on Higher Education with authority over public supported higher education in the State	No	No - But relates to manner in which one or more agency deliverables is provided		



322	59-103-25	State	Statute	Establishment of the State Commission on Higher Education with authority over public supported higher education in the State	No	No - But relates to manner in which one or more agency deliverables is provided	
323	59-103-30	State	Statute	Establishment of the State Commission on Higher Education with authority over public supported higher education in the State	No	No - But relates to manner in which one or more agency deliverables is provided	
324	59-103-35	State	Statute	Establishment of the State Commission on Higher Education with authority over public supported higher education in the State	No	No - But relates to manner in which one or more agency deliverables is provided	
325	59-103-36	State	Statute	Establishment of the State Commission on Higher Education with authority over public supported higher education in the State	No	No - But relates to manner in which one or more agency deliverables is provided	
326	59-103-40	State	Statute	Establishment of the State Commission on Higher Education with authority over public supported higher education in the State	No	No - But relates to manner in which one or more agency deliverables is provided	
327	59-103-45	State	Statute	Establishment of the State Commission on Higher Education with authority over public supported higher education in the State	No	No - But relates to manner in which one or more agency deliverables is provided	
328	59-103-50	State	Statute	Establishment of the State Commission on Higher Education with authority over public supported higher education in the State	No	No - But relates to manner in which one or more agency deliverables is provided	
329	59-103-55	State	Statute	Establishment of the State Commission on Higher Education with authority over public supported higher education in the State	No	No - But relates to manner in which one or more agency deliverables is provided	
330	59-103-60	State	Statute	Establishment of the State Commission on Higher Education with authority over public supported higher education in the State	No	No - But relates to manner in which one or more agency deliverables is provided	
331	59-103-65	State	Statute	Establishment of the State Commission on Higher Education with authority over public supported higher education in the State	No	No - But relates to manner in which one or more agency deliverables is provided	
332	59-103-70	State	Statute	Establishment of the State Commission on Higher Education with authority over public supported higher education in the State	No	No - But relates to manner in which one or more agency deliverables is provided	
333	59-103-80	State	Statute	Establishment of the State Commission on Higher Education with authority over public supported higher education in the State	No	No - But relates to manner in which one or more agency deliverables is provided	
334	59-103-90	State	Statute	Establishment of the State Commission on Higher Education with authority over public supported higher education in the State	No	No - But relates to manner in which one or more agency deliverables is provided	
335	59-104-20	State	Statute	Meeting of admissions pre-requisites, Palmetto Scholarship program, competitive grants, Governor's Professor of the Year recognition, endowed professorship programs, accountability through assessment and planning, institutional effectiveness requirements	Yes	Yes	Report our agency must/may provide





354	59-104-660	State	Statute	Meeting of admissions pre-requisites, Palmetto Scholarship program, competitive grants, Governor's Professor of the Year recognition, endowed professorship programs, accountability through assessment and planning, institutional effectiveness requirements	Yes	Yes	Report our agency must/may provide	
355	59-105-20	State	Statute	Statutory requirements for a comprehensive sexual assault policy to address prevention and awareness of sexual assault	Yes	No - But relates to manner in which one or more agency deliverables is provided		
356	59-105-30	State	Statute	Statutory requirements for a comprehensive sexual assault policy to address prevention and awareness of sexual assault	Yes	No - But relates to manner in which one or more agency deliverables is provided		
357	59-105-40	State	Statute	Statutory requirements for a comprehensive sexual assault policy to address prevention and awareness of sexual assault	Yes	No - But relates to manner in which one or more agency deliverables is provided		
358	59-105-50	State	Statute	Statutory requirements for a comprehensive sexual assault policy to address prevention and awareness of sexual assault	Yes	No - But relates to manner in which one or more agency deliverables is provided		
359	59-105-60	State	Statute	Statutory requirements for a comprehensive sexual assault policy to address prevention and awareness of sexual assault	Yes	No - But relates to manner in which one or more agency deliverables is provided		
360	59-106-20	State	Statute	Statutory requirements for inclusion of information regarding registered sex offenders in annual security reports	Yes	Yes	Report our agency must/may provide	
361	59-106-30	State	Statute	Statutory requirements for inclusion of information regarding registered sex offenders in annual security reports	Yes	Yes	Report our agency must/may provide	
362	59-107-100	State	Statute	Statutory requirements regarding remittance and application of tuition fees for permanent improvements and other expenses, regulations for issuance of State institution bonds	No	Yes	Other service or product our agency must/may provide	Business/Accounting services
363	59-107-110	State	Statute	Statutory requirements regarding remittance and application of tuition fees for permanent improvements and other expenses, regulations for issuance of State institution bonds	No	Yes	Other service or product our agency must/may provide	Business/Accounting services
364	59-107-120	State	Statute	Statutory requirements regarding remittance and application of tuition fees for permanent improvements and other expenses, regulations for issuance of State institution bonds	No	Yes	Other service or product our agency must/may provide	Business/Accounting services
365	59-107-140	State	Statute	Statutory requirements regarding remittance and application of tuition fees for permanent improvements and other expenses, regulations for issuance of State institution bonds	No	Yes	Other service or product our agency must/may provide	Business/Accounting services
366	59-107-150	State	Statute	Statutory requirements regarding remittance and application of tuition fees for permanent improvements and other expenses, regulations for issuance of State institution bonds	No	Yes	Other service or product our agency must/may provide	Business/Accounting services
367	59-107-160	State	Statute	Statutory requirements regarding remittance and application of tuition fees for permanent improvements and other expenses, regulations for issuance of State institution bonds	No	Yes	Other service or product our agency must/may provide	Business/Accounting services
368	59-107-170	State	Statute	Statutory requirements regarding remittance and application of tuition fees for permanent improvements and other expenses, regulations for issuance of State institution bonds	No	Yes	Other service or product our agency must/may provide	Business/Accounting services
369	59-107-180	State	Statute	Statutory requirements regarding remittance and application of tuition fees for permanent improvements and other expenses, regulations for issuance of State institution bonds	No	Yes	Other service or product our agency must/may provide	Business/Accounting services
370	59-107-190	State	Statute	Statutory requirements regarding remittance and application of tuition fees for permanent improvements and other expenses, regulations for issuance of State institution bonds	No	Yes	Other service or product our agency must/may provide	Business/Accounting services
371	59-107-20	State	Statute	Statutory requirements regarding remittance and application of tuition fees for permanent improvements and other expenses, regulations for issuance of State institution bonds	No	Yes	Other service or product our agency must/may provide	Business/Accounting services
372	59-107-200	State	Statute	Statutory requirements regarding remittance and application of tuition fees for permanent improvements and other expenses, regulations for issuance of State institution bonds	No	Yes	Other service or product our agency must/may provide	Business/Accounting services
373	59-107-30	State	Statute	Statutory requirements regarding remittance and application of tuition fees for permanent improvements and other expenses, regulations for issuance of State institution bonds	No	Yes	Other service or product our agency must/may provide	Business/Accounting services
374	59-107-40	State	Statute	Statutory requirements regarding remittance and application of tuition fees for permanent improvements and other expenses, regulations for issuance of State institution bonds	No	Yes	Other service or product our agency must/may provide	Business/Accounting services
375	59-107-50	State	Statute	Statutory requirements regarding remittance and application of tuition fees for permanent improvements and other expenses, regulations for issuance of State institution bonds	No	Yes	Other service or product our agency must/may provide	Business/Accounting services













544	59-149-70	State	Statute	Authorization and requirements for the LIFE Scholarship program	Yes	Yes	Other service or product our agency must/may provide	Financial Aid and Business/Accounting services
545	59-149-80	State	Statute	Authorization and requirements for the LIFE Scholarship program	Yes	Yes	Other service or product our agency must/may provide	Financial Aid and Business/Accounting services
546	59-149-90	State	Statute	Authorization and requirements for the LIFE Scholarship program	Yes	Yes	Other service or product our agency must/may provide	Financial Aid and Business/Accounting services
547	59-150-100	State	Statute	Use of Lottery funds in support of higher education	Yes	No - But relates to sources of funding for one or more agency deliverables		
548	59-150-110	State	Statute	Use of Lottery funds in support of higher education	Yes	No - But relates to sources of funding for one or more agency deliverables		
549	59-150-120	State	Statute	Use of Lottery funds in support of higher education	Yes	No - But relates to sources of funding for one or more agency deliverables		
550	59-150-130	State	Statute	Use of Lottery funds in support of higher education	Yes	No - But relates to sources of funding for one or more agency deliverables		
551	59-150-140	State	Statute	Use of Lottery funds in support of higher education	Yes	No - But relates to sources of funding for one or more agency deliverables		
552	59-150-150	State	Statute	Use of Lottery funds in support of higher education	Yes	No - But relates to sources of funding for one or more agency deliverables		
553	59-150-160	State	Statute	Use of Lottery funds in support of higher education	Yes	No - But relates to sources of funding for one or more agency deliverables		
554	59-150-165	State	Statute	Use of Lottery funds in support of higher education	Yes	No - But relates to sources of funding for one or more agency deliverables		
555	59-150-170	State	Statute	Use of Lottery funds in support of higher education	Yes	No - But relates to sources of funding for one or more agency deliverables		
556	59-150-180	State	Statute	Use of Lottery funds in support of higher education	Yes	No - But relates to sources of funding for one or more agency deliverables		
557	59-150-190	State	Statute	Use of Lottery funds in support of higher education	Yes	No - But relates to sources of funding for one or more agency deliverables		
558	59-150-20	State	Statute	Use of Lottery funds in support of higher education	Yes	No - But relates to sources of funding for one or more agency deliverables		
559	59-150-200	State	Statute	Use of Lottery funds in support of higher education	Yes	No - But relates to sources of funding for one or more agency deliverables		
560	59-150-210	State	Statute	Use of Lottery funds in support of higher education	Yes	No - But relates to sources of funding for one or more agency deliverables		
561	59-150-220	State	Statute	Use of Lottery funds in support of higher education	Yes	No - But relates to sources of funding for one or more agency deliverables		
562	59-150-230	State	Statute	Use of Lottery funds in support of higher education	Yes	No - But relates to sources of funding for one or more agency deliverables		





581	59-150-375	State	Statute	Use of Lottery funds in support of higher education	Yes	No - But relates to sources of funding for one or more agency deliverables		
582	59-150-380	State	Statute	Use of Lottery funds in support of higher education	Yes	No - But relates to sources of funding for one or more agency deliverables		
583	59-150-390	State	Statute	Use of Lottery funds in support of higher education	Yes	No - But relates to sources of funding for one or more agency deliverables		
584	59-150-40	State	Statute	Use of Lottery funds in support of higher education	Yes	No - But relates to sources of funding for one or more agency deliverables		
585	59-150-400	State	Statute	Use of Lottery funds in support of higher education	Yes	No - But relates to sources of funding for one or more agency deliverables		
586	59-150-410	State	Statute	Use of Lottery funds in support of higher education	Yes	No - But relates to sources of funding for one or more agency deliverables		
587	59-150-50	State	Statute	Use of Lottery funds in support of higher education	Yes	No - But relates to sources of funding for one or more agency deliverables		
588	59-150-60	State	Statute	Use of Lottery funds in support of higher education	Yes	No - But relates to sources of funding for one or more agency deliverables		
589	59-150-70	State	Statute	Use of Lottery funds in support of higher education	Yes	No - But relates to sources of funding for one or more agency deliverables		
590	59-150-75	State	Statute	Use of Lottery funds in support of higher education	Yes	No - But relates to sources of funding for one or more agency deliverables		
591	59-150-80	State	Statute	Use of Lottery funds in support of higher education	Yes	No - But relates to sources of funding for one or more agency deliverables		
592	59-150-90	State	Statute	Use of Lottery funds in support of higher education	Yes	No - But relates to sources of funding for one or more agency deliverables		
593	59-26-100	State	Statute	Establishes requirements and standards relating to the teacher education programs	Yes	Yes	Other service or product our agency must/may provide	Teacher ed programs
594	59-26-110	State	Statute	Establishes requirements and standards relating to the teacher education programs	Yes	Yes	Other service or product our agency must/may provide	Teacher ed programs
595	59-26-20	State	Statute	Establishes requirements and standards relating to the teacher education programs	Yes	Yes	Other service or product our agency must/may provide	Teacher ed programs
596	59-26-30	State	Statute	Establishes requirements and standards relating to the teacher education programs	Yes	Yes	Other service or product our agency must/may provide	Teacher ed programs
597	59-26-30	State	Statute	Establishes requirements and standards relating to the teacher education programs	Yes	Yes	Other service or product our agency must/may provide	Teacher ed programs
598	59-26-40	State	Statute	Establishes requirements and standards relating to the teacher education programs	Yes	Yes	Other service or product our agency must/may provide	Teacher ed programs
599	59-26-45	State	Statute	Establishes requirements and standards relating to the teacher education programs	Yes	Yes	Other service or product our agency must/may provide	Teacher ed programs
600	59-26-50	State	Statute	Establishes requirements and standards relating to the teacher education programs	Yes	Yes	Other service or product our agency must/may provide	Teacher ed programs
601	59-26-60	State	Statute	Establishes requirements and standards relating to the teacher education programs	Yes	Yes	Other service or product our agency must/may provide	Teacher ed programs
602	59-26-70	State	Statute	Establishes requirements and standards relating to the teacher education programs	Yes	Yes	Other service or product our agency must/may provide	Teacher ed programs



657	9-1-1766	State	Statute	Retirement system for employees	No	Yes	Distribute funding to another entity	
658	9-1-1767	State	Statute	Retirement system for employees	No	Yes	Distribute funding to another entity	
659	9-1-1770	State	Statute	Retirement system for employees	No	Yes	Distribute funding to another entity	
660	9-1-1775	State	Statute	Retirement system for employees	No	Yes	Distribute funding to another entity	
661	9-1-1780	State	Statute	Retirement system for employees	No	Yes	Distribute funding to another entity	
662	9-1-1790	State	Statute	Retirement system for employees	No	Yes	Distribute funding to another entity	
663	9-1-1795	State	Statute	Retirement system for employees	No	Yes	Distribute funding to another entity	
664	9-1-1800	State	Statute	Retirement system for employees	No	Yes	Distribute funding to another entity	
665	9-1-1812	State	Statute	Retirement system for employees	No	Yes	Distribute funding to another entity	
666	9-1-1814	State	Statute	Retirement system for employees	No	Yes	Distribute funding to another entity	
667	9-1-1815	State	Statute	Retirement system for employees	No	Yes	Distribute funding to another entity	
668	9-1-1830	State	Statute	Retirement system for employees	No	Yes	Distribute funding to another entity	
669	9-1-1850	State	Statute	Retirement system for employees	No	Yes	Distribute funding to another entity	
670	9-1-1870	State	Statute	Retirement system for employees	No	Yes	Distribute funding to another entity	
671	9-1-210	State	Statute	Retirement system for employees	No	Yes	Distribute funding to another entity	
672	9-1-230	State	Statute	Retirement system for employees	No	Yes	Distribute funding to another entity	
673	9-1-240	State	Statute	Retirement system for employees	No	Yes	Distribute funding to another entity	
674	9-1-250	State	Statute	Retirement system for employees	No	Yes	Distribute funding to another entity	
675	9-1-260	State	Statute	Retirement system for employees	No	Yes	Distribute funding to another entity	
676	9-1-270	State	Statute	Retirement system for employees	No	Yes	Distribute funding to another entity	
677	9-1-280	State	Statute	Retirement system for employees	No	Yes	Distribute funding to another entity	
678	9-1-290	State	Statute	Retirement system for employees	No	Yes	Distribute funding to another entity	
679	9-1-300	State	Statute	Retirement system for employees	No	Yes	Distribute funding to another entity	
680	9-1-320	State	Statute	Retirement system for employees	No	Yes	Distribute funding to another entity	
681	9-1-410	State	Statute	Retirement system for employees	No	Yes	Distribute funding to another entity	
682	9-1-420	State	Statute	Retirement system for employees	No	Yes	Distribute funding to another entity	
683	9-1-425	State	Statute	Retirement system for employees	No	Yes	Distribute funding to another entity	
684	9-1-430	State	Statute	Retirement system for employees	No	Yes	Distribute funding to another entity	
685	9-1-450	State	Statute	Retirement system for employees	No	Yes	Distribute funding to another entity	
686	9-1-460	State	Statute	Retirement system for employees	No	Yes	Distribute funding to another entity	
687	9-1-470	State	Statute	Retirement system for employees	No	Yes	Distribute funding to another entity	
688	9-1-480	State	Statute	Retirement system for employees	No	Yes	Distribute funding to another entity	
689	9-1-490	State	Statute	Retirement system for employees	No	Yes	Distribute funding to another entity	
690	9-1-510	State	Statute	Retirement system for employees	No	Yes	Distribute funding to another entity	
691	9-1-520	State	Statute	Retirement system for employees	No	Yes	Distribute funding to another entity	
692	9-1-530	State	Statute	Retirement system for employees	No	Yes	Distribute funding to another entity	
693	9-1-540	State	Statute	Retirement system for employees	No	Yes	Distribute funding to another entity	
694	9-1-550	State	Statute	Retirement system for employees	No	Yes	Distribute funding to another entity	
695	9-1-560	State	Statute	Retirement system for employees	No	Yes	Distribute funding to another entity	
696	9-1-570	State	Statute	Retirement system for employees	No	Yes	Distribute funding to another entity	
697	9-1-580	State	Statute	Retirement system for employees	No	Yes	Distribute funding to another entity	
698	9-1-610	State	Statute	Retirement system for employees	No	Yes	Distribute funding to another entity	
699	9-1-620	State	Statute	Retirement system for employees	No	Yes	Distribute funding to another entity	
700	9-1-630	State	Statute	Retirement system for employees	No	Yes	Distribute funding to another entity	
701	9-1-640	State	Statute	Retirement system for employees	No	Yes	Distribute funding to another entity	
702	9-1-650	State	Statute	Retirement system for employees	No	Yes	Distribute funding to another entity	
703	9-1-660	State	Statute	Retirement system for employees	No	Yes	Distribute funding to another entity	
704	9-1-670	State	Statute	Retirement system for employees	No	Yes	Distribute funding to another entity	
705	9-1-810	State	Statute	Retirement system for employees	No	Yes	Distribute funding to another entity	
706	9-1-820	State	Statute	Retirement system for employees	No	Yes	Distribute funding to another entity	
707	9-1-830	State	Statute	Retirement system for employees	No	Yes	Distribute funding to another entity	
708	9-1-840	State	Statute	Retirement system for employees	No	Yes	Distribute funding to another entity	
709	Act No. 13 (R22, H3726) of the 2017 Session of the General Assembly	State	Statute	Legislation pertaining to oversight of the South Carolina Retirement System with stipulated employer and employee contribution rates	No	Yes	Other service or product our agency must/may provide	HR / Payroll services

710	Act No. 22 (R38, H3034) of the 2017 Session of the General Assembly	State	Statute	Legislation that extends in-state tuition to spouses and dependents of military personnel and veterans under specified circumstances	Yes	Yes	Other service or product our agency must/may provide	Business/Accounting services
711	119-1 Code of State Regulations	State	Regulation	Regulations for drivers of vehicles on campuses of the University of South Carolina System; authority to issue fines and authority of Chancellor to appoint boards, committees, and courts to oversee regulation	Yes	No	But relates to manner in which one or more agency deliverables is provided	
712	119-10	State	Regulation	Regulations for drivers of vehicles on campuses of the University of South Carolina System; authority to issue fines and authority of Chancellor to appoint boards, committees, and courts to oversee regulation	Yes	No	But relates to manner in which one or more agency deliverables is provided	
713	119-11	State	Regulation	Regulations for drivers of vehicles on campuses of the University of South Carolina System; authority to issue fines and authority of Chancellor to appoint boards, committees, and courts to oversee regulation	Yes	No	But relates to manner in which one or more agency deliverables is provided	
714	119-12	State	Regulation	Regulations for drivers of vehicles on campuses of the University of South Carolina System; authority to issue fines and authority of Chancellor to appoint boards, committees, and courts to oversee regulation	Yes	No	But relates to manner in which one or more agency deliverables is provided	
715	119-13	State	Regulation	Regulations for drivers of vehicles on campuses of the University of South Carolina System; authority to issue fines and authority of Chancellor to appoint boards, committees, and courts to oversee regulation	Yes	No	But relates to manner in which one or more agency deliverables is provided	
716	119-14	State	Regulation	Regulations for drivers of vehicles on campuses of the University of South Carolina System; authority to issue fines and authority of Chancellor to appoint boards, committees, and courts to oversee regulation	Yes	No	But relates to manner in which one or more agency deliverables is provided	
717	119-15	State	Regulation	Regulations for drivers of vehicles on campuses of the University of South Carolina System; authority to issue fines and authority of Chancellor to appoint boards, committees, and courts to oversee regulation	Yes	No	But relates to manner in which one or more agency deliverables is provided	
718	119-16	State	Regulation	Regulations for drivers of vehicles on campuses of the University of South Carolina System; authority to issue fines and authority of Chancellor to appoint boards, committees, and courts to oversee regulation	Yes	No	But relates to manner in which one or more agency deliverables is provided	
719	119-17	State	Regulation	Regulations for drivers of vehicles on campuses of the University of South Carolina System; authority to issue fines and authority of Chancellor to appoint boards, committees, and courts to oversee regulation	Yes	No	But relates to manner in which one or more agency deliverables is provided	
720	119-18	State	Regulation	Regulations for drivers of vehicles on campuses of the University of South Carolina System; authority to issue fines and authority of Chancellor to appoint boards, committees, and courts to oversee regulation	Yes	No	But relates to manner in which one or more agency deliverables is provided	
721	119-19	State	Regulation	Regulations for drivers of vehicles on campuses of the University of South Carolina System; authority to issue fines and authority of Chancellor to appoint boards, committees, and courts to oversee regulation	Yes	No	But relates to manner in which one or more agency deliverables is provided	
722	119-2	State	Regulation	Regulations for drivers of vehicles on campuses of the University of South Carolina System; authority to issue fines and authority of Chancellor to appoint boards, committees, and courts to oversee regulation	Yes	No	But relates to manner in which one or more agency deliverables is provided	
723	119-20	State	Regulation	Regulations for drivers of vehicles on campuses of the University of South Carolina System; authority to issue fines and authority of Chancellor to appoint boards, committees, and courts to oversee regulation	Yes	No	But relates to manner in which one or more agency deliverables is provided	

724	119-21	State	Regulation	Regulations for drivers of vehicles on campuses of the University of South Carolina System; authority to issue fines and authority of Chancellor to appoint boards, committees, and courts to oversee regulation	Yes		No - But relates to manner in which one or more agency deliverables is provided	
725	119-22	State	Regulation	Regulations for drivers of vehicles on campuses of the University of South Carolina System; authority to issue fines and authority of Chancellor to appoint boards, committees, and courts to oversee regulation	Yes		No - But relates to manner in which one or more agency deliverables is provided	
726	119-23	State	Regulation	Regulations for drivers of vehicles on campuses of the University of South Carolina System; authority to issue fines and authority of Chancellor to appoint boards, committees, and courts to oversee regulation	Yes		No - But relates to manner in which one or more agency deliverables is provided	
727	119-3	State	Regulation	Regulations for drivers of vehicles on campuses of the University of South Carolina System; authority to issue fines and authority of Chancellor to appoint boards, committees, and courts to oversee regulation	Yes		No - But relates to manner in which one or more agency deliverables is provided	
728	119-4	State	Regulation	Regulations for drivers of vehicles on campuses of the University of South Carolina System; authority to issue fines and authority of Chancellor to appoint boards, committees, and courts to oversee regulation	Yes		No - But relates to manner in which one or more agency deliverables is provided	
729	119-5	State	Regulation	Regulations for drivers of vehicles on campuses of the University of South Carolina System; authority to issue fines and authority of Chancellor to appoint boards, committees, and courts to oversee regulation	Yes		No - But relates to manner in which one or more agency deliverables is provided	
730	119-6	State	Regulation	Regulations for drivers of vehicles on campuses of the University of South Carolina System; authority to issue fines and authority of Chancellor to appoint boards, committees, and courts to oversee regulation	Yes		No - But relates to manner in which one or more agency deliverables is provided	
731	119-7	State	Regulation	Regulations for drivers of vehicles on campuses of the University of South Carolina System; authority to issue fines and authority of Chancellor to appoint boards, committees, and courts to oversee regulation	Yes		No - But relates to manner in which one or more agency deliverables is provided	
732	119-8	State	Regulation	Regulations for drivers of vehicles on campuses of the University of South Carolina System; authority to issue fines and authority of Chancellor to appoint boards, committees, and courts to oversee regulation	Yes		No - But relates to manner in which one or more agency deliverables is provided	
733	119-9	State	Regulation	Regulations for drivers of vehicles on campuses of the University of South Carolina System; authority to issue fines and authority of Chancellor to appoint boards, committees, and courts to oversee regulation	Yes		No - But relates to manner in which one or more agency deliverables is provided	
734	62 Code of State Regulations, Sec. 62-1000	State	Regulation	State Regulation promulgated for the administration of LIFE Scholarship and Palmetto Fellows Scholarship Appeals	Yes	Yes	Other service or product our agency must/may provide	Financial Aid and Business/Accounting services
735	62 Code of State Regulations, Sec. 62-1100	State	Regulation	State Regulation promulgated for oversight and administration of the program for free tuition for residents of SC aged sixty years old and older	Yes	Yes	Other service or product our agency must/may provide	Financial Aid and Business/Accounting services
736	62 Code of State Regulations, Sec. 62-1200.1	State	Regulation	State Regulation promulgated for the administration of the LIFE Scholarship and LIFE Scholarship Enhancements	Yes	Yes	Other service or product our agency must/may provide	Financial Aid and Business/Accounting services
737	62 Code of State Regulations, Sec. 62-250	State	Regulation	State Regulations promulgated for South Carolina National Guard College Assistance Program	Yes	Yes	Other service or product our agency must/may provide	Financial Aid services
738	62 Code of State Regulations, Sec. 62-300	State	Regulation	State Regulation promulgated for Palmetto Fellows Scholarship Program	Yes	Yes	Other service or product our agency must/may provide	Financial Aid services

739	62 Code of State Regulations, Sec. 62-450	State	Regulation	State Regulation promulgated for the SC Need-based Grant Program for public institutions	Yes	Yes	Other service or product our agency must/may provide	Financial Aid services
740	62 Code of State Regulations, Sec. 62-510	State	Regulation	State Regulation promulgated for the Governor's Teaching Scholarship/Loan Program	Yes	Yes	Other service or product our agency must/may provide	Financial Aid services
741	62 Code of State Regulations, Sec. 62-540	State	Regulation	State Regulation promulgated for the African-American Teacher Loan Program	Yes	Yes	Other service or product our agency must/may provide	Financial Aid services
742	62 Code of State Regulations, Sec. 62-600	State	Regulation	State Regulation promulgated for the determination of rates of tuition and fees (State Residency for tuition).	Yes	Yes	Other service or product our agency must/may provide	Business/Accounting services
743	62 Code of State Regulations, Sec. 62-700	State	Regulation	State Regulation for Performance Standards and Funding and the Reduction, Expansion, Consolidation, or Closure of an Institution.	No	No - But relates to manner in which one or more agency deliverables is provided		
744	62 Code of State Regulations, Sec. 62-820	State	Regulation	State Regulation promulgated for matching of gifts and funds for institutional endowments	Yes	Yes	Other service or product our agency must/may provide	Business/Accounting services
745	62 Code of State Regulations, Sec. 62-900.85	State	Regulation	State Regulation promulgated for the administration of the SC HOPE scholarship program	Yes	Yes	Other service or product our agency must/may provide	Financial Aid and Business/Accounting services
746	62-1005	State	Regulation	State Regulation promulgated for the administration of LIFE Scholarship and Palmetto Fellows Scholarship Appeals	Yes	Yes	Other service or product our agency must/may provide	Financial Aid and Business/Accounting services
747	62-1010	State	Regulation	State Regulation promulgated for the administration of LIFE Scholarship and Palmetto Fellows Scholarship Appeals	Yes	Yes	Other service or product our agency must/may provide	Financial Aid and Business/Accounting services
748	62-1020	State	Regulation	State Regulation promulgated for the administration of LIFE Scholarship and Palmetto Fellows Scholarship Appeals	Yes	Yes	Other service or product our agency must/may provide	Financial Aid and Business/Accounting services
749	62-1025	State	Regulation	State Regulation promulgated for the administration of LIFE Scholarship and Palmetto Fellows Scholarship Appeals	Yes	Yes	Other service or product our agency must/may provide	Financial Aid and Business/Accounting services
750	62-1030	State	Regulation	State Regulation promulgated for the administration of LIFE Scholarship and Palmetto Fellows Scholarship Appeals	Yes	Yes	Other service or product our agency must/may provide	Financial Aid and Business/Accounting services
751	62-1035	State	Regulation	State Regulation promulgated for the administration of LIFE Scholarship and Palmetto Fellows Scholarship Appeals	Yes	Yes	Other service or product our agency must/may provide	Financial Aid and Business/Accounting services
752	62-1040	State	Regulation	State Regulation promulgated for the administration of LIFE Scholarship and Palmetto Fellows Scholarship Appeals	Yes	Yes	Other service or product our agency must/may provide	Financial Aid and Business/Accounting services
753	62-1110	State	Regulation	State Regulation promulgated for oversight and administration of the program for free tuition for residents of SC aged sixty years old and older	Yes	Yes	Other service or product our agency must/may provide	Financial Aid and Business/Accounting services
754	62-1120	State	Regulation	State Regulation promulgated for oversight and administration of the program for free tuition for residents of SC aged sixty years old and older	Yes	Yes	Other service or product our agency must/may provide	Financial Aid and Business/Accounting services
755	62-1130	State	Regulation	State Regulation promulgated for oversight and administration of the program for free tuition for residents of SC aged sixty years old and older	Yes	Yes	Other service or product our agency must/may provide	Financial Aid and Business/Accounting services
756	62-1140	State	Regulation	State Regulation promulgated for oversight and administration of the program for free tuition for residents of SC aged sixty years old and older	Yes	Yes	Other service or product our agency must/may provide	Financial Aid and Business/Accounting services
757	62-1150	State	Regulation	State Regulation promulgated for oversight and administration of the program for free tuition for residents of SC aged sixty years old and older	Yes	Yes	Other service or product our agency must/may provide	Financial Aid and Business/Accounting services
758	62-1160	State	Regulation	State Regulation promulgated for oversight and administration of the program for free tuition for residents of SC aged sixty years old and older	Yes	Yes	Other service or product our agency must/may provide	Financial Aid and Business/Accounting services
759	62-1170	State	Regulation	State Regulation promulgated for oversight and administration of the program for free tuition for residents of SC aged sixty years old and older	Yes	Yes	Other service or product our agency must/may provide	Financial Aid and Business/Accounting services
760	62-1200.10	State	Regulation	State Regulation promulgated for the administration of the LIFE Scholarship and LIFE Scholarship Enhancements	Yes	Yes	Other service or product our agency must/may provide	Financial Aid and Business/Accounting services
761	62-1200.20	State	Regulation	State Regulation promulgated for the administration of the LIFE Scholarship and LIFE Scholarship Enhancements	Yes	Yes	Other service or product our agency must/may provide	Financial Aid and Business/Accounting services
762	62-1200.25	State	Regulation	State Regulation promulgated for the administration of the LIFE Scholarship and LIFE Scholarship Enhancements	Yes	Yes	Other service or product our agency must/may provide	Financial Aid and Business/Accounting services







819	62-570	State	Regulation	State Regulation promulgated for the African-American Teacher Loan Program	Yes	Yes	Other service or product our agency must/may provide	Financial Aid services
820	62-580	State	Regulation	State Regulation promulgated for the African-American Teacher Loan Program	Yes	Yes	Other service or product our agency must/may provide	Financial Aid services
821	62-590	State	Regulation	State Regulation promulgated for the African-American Teacher Loan Program	Yes	Yes	Other service or product our agency must/may provide	Financial Aid services
822	62-601	State	Regulation	State Regulation promulgated for the determination of rates of tuition and fees (State Residency for tuition).	Yes	Yes	Other service or product our agency must/may provide	Business/Accounting services
823	62-602	State	Regulation	State Regulation promulgated for the determination of rates of tuition and fees (State Residency for tuition).	Yes	Yes	Other service or product our agency must/may provide	Business/Accounting services
824	62-603	State	Regulation	State Regulation promulgated for the determination of rates of tuition and fees (State Residency for tuition).	Yes	Yes	Other service or product our agency must/may provide	Business/Accounting services
825	62-604	State	Regulation	State Regulation promulgated for the determination of rates of tuition and fees (State Residency for tuition).	Yes	Yes	Other service or product our agency must/may provide	Business/Accounting services
826	62-605	State	Regulation	State Regulation promulgated for the determination of rates of tuition and fees (State Residency for tuition).	Yes	Yes	Other service or product our agency must/may provide	Business/Accounting services
827	62-606	State	Regulation	State Regulation promulgated for the determination of rates of tuition and fees (State Residency for tuition).	Yes	Yes	Other service or product our agency must/may provide	Business/Accounting services
828	62-607	State	Regulation	State Regulation promulgated for the determination of rates of tuition and fees (State Residency for tuition).	Yes	Yes	Other service or product our agency must/may provide	Business/Accounting services
829	62-608	State	Regulation	State Regulation promulgated for the determination of rates of tuition and fees (State Residency for tuition).	Yes	Yes	Other service or product our agency must/may provide	Business/Accounting services
830	62-609	State	Regulation	State Regulation promulgated for the determination of rates of tuition and fees (State Residency for tuition).	Yes	Yes	Other service or product our agency must/may provide	Business/Accounting services
831	62-610	State	Regulation	State Regulation promulgated for the determination of rates of tuition and fees (State Residency for tuition).	Yes	Yes	Other service or product our agency must/may provide	Business/Accounting services
832	62-611	State	Regulation	State Regulation promulgated for the determination of rates of tuition and fees (State Residency for tuition).	Yes	Yes	Other service or product our agency must/may provide	Business/Accounting services
833	62-612	State	Regulation	State Regulation promulgated for the determination of rates of tuition and fees (State Residency for tuition).	Yes	Yes	Other service or product our agency must/may provide	Business/Accounting services
834	62-710	State	Regulation	State Regulation for Performance Standards and Funding and the Reduction, Expansion, Consolidation, or Closure of an Institution.	No	No - But relates to manner in which one or more agency deliverables is provided		
835	62-720	State	Regulation	State Regulation for Performance Standards and Funding and the Reduction, Expansion, Consolidation, or Closure of an Institution.	No	No - But relates to manner in which one or more agency deliverables is provided		
836	62-730	State	Regulation	State Regulation for Performance Standards and Funding and the Reduction, Expansion, Consolidation, or Closure of an Institution.	No	No - But relates to manner in which one or more agency deliverables is provided		
837	62-740	State	Regulation	State Regulation for Performance Standards and Funding and the Reduction, Expansion, Consolidation, or Closure of an Institution.	No	No - But relates to manner in which one or more agency deliverables is provided		
838	62-750	State	Regulation	State Regulation for Performance Standards and Funding and the Reduction, Expansion, Consolidation, or Closure of an Institution.	No	No - But relates to manner in which one or more agency deliverables is provided		
839	62-830	State	Regulation	State Regulation promulgated for matching of gifts and funds for institutional endowments	Yes	Yes	Other service or product our agency must/may provide	Business/Accounting services
840	62-835	State	Regulation	State Regulation promulgated for matching of gifts and funds for institutional endowments	Yes	Yes	Other service or product our agency must/may provide	Business/Accounting services
841	62-840	State	Regulation	State Regulation promulgated for matching of gifts and funds for institutional endowments	Yes	Yes	Other service or product our agency must/may provide	Business/Accounting services



Agency Name: UNIVERSITY OF SOUTH CAROLINA - BEAUFORT

Fiscal Year 2019-2020  
Accountability Report

Agency Code and Section: H360 20D

Customer Template

Service/Product Provided to Customers	Customer Segments	<u>Specify only for the following Segments:</u> (1) Industry: Name; (2) Professional Organization: Name; (3) Public: Demographics.	Divisions or Major Programs	Description
Reporting data, analyses, and metric performance to insure sound financial management and academic excellence and integrity	Industry	US Department of Education/IPEDS	I.A. Unrestricted E&G; I.B. Restricted E&G; II. Auxiliary Services; III. C. Employee Benefits	Responsible for effectively and efficiently educating and enriching the lives of residents of SC and beyond
Reporting data, analyses, and metric performance to insure sound financial management and academic excellence and integrity	Executive Branch/State Agencies		I.A. Unrestricted E&G; I.B. Restricted E&G; II. Auxiliary Services; III. C. Employee Benefits	Responsible for effectively and efficiently educating and enriching the lives of residents of SC and beyond
Reporting data, analyses, and metric performance for compliance and improvement initiatives	Professional Organization	SACS, NCATE/CAEP, CCNE	I.A. Unrestricted E&G; I.B. Restricted E&G; II. Auxiliary Services; III. C. Employee Benefits	Responsible for effectively and efficiently educating and enriching the lives of residents of SC and beyond
Providing quality, affordable academic and support programs leading to a degree (BA/BS/AA/AS) or certificate	General Public	Students: racially and culturally diverse individuals of all ages, including military personnel and students from the South Carolina Lowcountry, the nation, and the world.	I.A. Unrestricted E&G; I.B. Restricted E&G; II. Auxiliary Services; III. C. Employee Benefits	Responsible for effectively and efficiently educating and enriching the lives of residents of SC and beyond
Providing quality, affordable academic and support programs leading to a degree (BA/BS/AA/AS) or certificate	General Public	Parents: racially and culturally diverse individuals, including military personnel, from the South Carolina Lowcountry, the nation, and the world.	I.A. Unrestricted E&G; I.B. Restricted E&G; II. Auxiliary Services; III. C. Employee Benefits	Responsible for effectively and efficiently educating and enriching the lives of residents of SC and beyond
Providing quality, affordable personal and cultural enrichment programs (OLLI, community education, artistic and cultural offerings, etc...)	General Public	Community members; racially and culturally diverse individuals of all ages, including military personnel, from the South Carolina Lowcountry, the nation, and the world.	I.A. Unrestricted E&G; I.B. Restricted E&G; III. C. Employee Benefits	Responsible for effectively and efficiently educating and enriching the lives of residents of SC and beyond
Providing highly skilled student interns and graduates to meet the demands of the job market	Industry	Employers (hospitals, social service agencies, K-12, etc...)	I.A. Unrestricted E&G; I.B. Restricted E&G;	Responsible for effectively and efficiently educating and enriching the lives of residents of SC and beyond

**Agency Name:****UNIVERSITY OF SOUTH CAROLINA - BEAUFORT****Fiscal Year 2019-2020  
Accountability Report****Agency Code and Section:****H360****20D****Partner Template**

<b>Name of Partner Entity</b>	<b>Type of Partner Entity</b>	<b>Description of Partnership</b>	<b>Associated Goal(s)</b>
SC School Districts	K-12 Education Institute	Collaboration on college fairs, recruitment events, increasing HS graduation and continuation to college	5.2.1
SC Technical Colleges	Higher Education Institute	Articulation agreements and MOUs to specify transfer credit policies	3.1.1, 4.1.1, 4.2.2
SCETV	State Government	Revitalization of the Beaufort SCETV facility while providing USCB with educational use of a professional television studio to support curriculum and projects across multiple departments	1.1.1, 4.1.2
Community Members	Individual	Donors, support of USCB events/cultural offerings and life-long learning opportunities	4.2.1, 5.2.2, 5.2.3
Granting Agencies	Professional Association	National Institutes of Health, National Humanities Alliance, etc... provide grant funding for research, scholarship, and program development	1.1.1, 2.1.2
Business and Industry	Private Business Organization	USCB prepares graduates to meet employment needs of businesses; Businesses provide internship and learning opportunities for students	4.1.1, 4.1.2, 5.2.1
SC Legislature	State Government	Provides appropriations to fund educational initiatives	1.1.1, 1.2.1, 1.2.2, 2.1.1, 2.1.2, 2.1.3, 3.1.2, 4.1.1,
Southern Association of Colleges and Schools Commission on Colleges	Federal Government	Accredits the institution and ensures quality of academic programs administration	1.1.1
SC Commission on Higher Education	State Government	Works as a channel through which information about SC institutions higher education is provided to state entities	1.1.1
USC Salkehatchie	Higher Education Institute	Student transfer arrangements (Sand Shark Scholars and articulation)	3.1.1, 4.1.1, 4.2.2
Palmetto College	Higher Education Institute	Partnership for online completion of baccalaureate degrees through USCB (Health Promotion, Hospitality Management, Human Services)	3.1.1, 4.1.1
US Department of Education	Federal Government	Federal Financial Aid	4.2.1
USC Columbia	Higher Education Institute	Collaboration on infrastructure (e.g., information management, financial, course management systems); host site for USC Columbia's PMBA program	3.2.1, 3.2.2
Town of Hilton Head Island	Local Government	MOU with Town of Hilton Head to develop new campus	1.1.1, 3.1.1, 4.1.1, 4.1.2
Beaufort County	Local Government	Multi-faceted collaboration to grow as their university partner in three locations across county: K16 system	1.1.1, 4.1.1
Jasper County	Local Government	Multi-faceted collaboration to raise educational attainment across K-16 spectrum and to prepare for Jasper Port	1.1.1, 4.1.1
Bernard Osher Foundation	Non-Governmental Organization	Osher Lifelong Learning Institute (OLLI) offering courses, lectures, and educational travel to those 50 years of age and older	5.2.2

Agency Name: UNIVERSITY OF SOUTH CAROLINA - BEAUFORT

Fiscal Year 2019-2020  
Accountability Report

Agency Code: H360 Section: 20D

Report and External Review Template

Item	Is this a Report, Review, or both?	Report or Review Name	Name of Entity Requesting the Report or Conducting Review	Type of Entity	Reporting Frequency	Current Fiscal Year: Submission Date or Review Timeline (MM/DB/YYYY)	Summary of Information Requested in the Report or Reviewed	Method to Access the Report or Information from the Review
1	External Review and Report	SACSCOC-Compliance Certification	Southern Association of Colleges and Schools Commission on Colleges	Federal	Other		Submitted every 10 years covering all aspects of the institution and certifying that our practices meet accreditation requirements	Contact USCB Office of Institutional Effectiveness and Research
3	External Review and Report	SACSCOC-Institutional Profiles	Southern Association of Colleges and Schools Commission on Colleges	Federal	Annually	15-Jan	Institutional information; enrollment information; completions data	Contact USCB Office of Institutional Effectiveness and Research
4	External Review and Report	SACSCOC-Financial Profiles	Southern Association of Colleges and Schools Commission on Colleges	Federal	Annually	15-Jul	USCB financial information and IPEDS finance	Contact USCB Office of Institutional Effectiveness and Research
5	External Review and Report	CLERY Annual Security Report	Federal Government	Federal	Annually	1-Oct	Detailed information about campus security policies and incidents	<a href="http://www.uscb.edu/public_safety/clery_report.html">http://www.uscb.edu/public_safety/clery_report.html</a>
6	External Review and Report	IPEDS	National Center for Education Statistics (NCES)	Federal	Annually	Various	Detailed information about campus enrollment, completions, human resources, finance, student financial aid, and libraries	<a href="http://nces.ed.gov/ipeds/datacenter/Default.aspx">http://nces.ed.gov/ipeds/datacenter/Default.aspx</a>
7	External Review and Report	CHE Institutional Effectiveness Report	Commission on Higher Education	State	Annually	1-Aug	Professional exam pass rates	<a href="http://www.uscb.edu/institutional_effectiveness/compliance/che_ie_report_s.html">http://www.uscb.edu/institutional_effectiveness/compliance/che_ie_report_s.html</a>
8	External Review and Report	CHE 301 Report	Commission on Higher Education	State	Annually	30-Jun	Employment of Associate's Degree recipients	<a href="http://www.che.sc.gov/DataPublications/Reports/AnnualEvaluationofAssociateDegreePrograms.aspx">http://www.che.sc.gov/DataPublications/Reports/AnnualEvaluationofAssociateDegreePrograms.aspx</a>
9	External Review and Report	Accountability Report	SC Department of Administration	State	Annually	15-Sep	Finance, strategic planning, and summary information about the University	<a href="http://uscb.edu/institutional_effectiveness/compliance/b_cb_reports.html">http://uscb.edu/institutional_effectiveness/compliance/b_cb_reports.html</a>
10	External Review and Report	Fiscal Operations Report Application to Participate (FISAP)	US Department of Education	Federal	Annually	30-Sep	Financial Aid expenditures and application for funding for Federal Work-Study Program and Federal Supplemental Education Opportunity Program	Contact USCB Financial Aid Office
11	External Review and Report	Financial Aid Reauthorization	US Department of Education	Federal	Annually	June	Financial Aid eligibility data	Contact USCB Financial Aid Office
12	External Review and Report	Annual Survey of Nursing Education Programs	Souther Regional Education Board (SREB)	Outside Organization	Annually	Fall	Nursing faculty characteristics and vacancies and enrollment demographics	Contact USCB Department of Nursing and Health Professions
13	External Review and Report	Annual Survey	American Association of Colleges of Nursing (AACN)	Federal	Annually	October	Program characteristics, student applications, demographics, NCLEX pass rate, completions, faculty characteristics	Contact USCB Department of Nursing and Health Professions
14	External Review and Report	Nursing Program Biennial Report	SC Department of Labor, Licensing, and Regulation (SC LLR)	State	Other	July	Biennial report of program characteristics, facilities, finances, program evaluation, completions, and faculty characteristics	Contact USCB Department of Nursing and Health Professions
15	External Review and Report	CAEP Report	Council for the Accreditation of Educator Preparation	Federal	Other	15-Apr	Education program changes needed based on analyses of data and alignment to CAEP Standards	Contact USCB Department of Education Chair
16	External Review and Report	Title II Report	US Department of Education	Federal	Annually	30-Apr	Document evidence of the number of students admitted to the professional Education program and those who completed the program	<a href="http://www.uscb.edu/academics/academic_departments/education/about_us/2014-2015_TitleII_final.pdf">http://www.uscb.edu/academics/academic_departments/education/about_us/2014-2015_TitleII_final.pdf</a>
17	External Review and Report	ADEPT Report	SC Department of Education	State	Other	1-Jul	Provides evidence of Education candidates meeting the South Carolina ADEPT Standards and programmatic changes based on analyses of data	Contact USCB Department of Education Chair
18	External Review only	Elliott Davis Decosimo: SC OMB A-133 Reports		Outside Organization	Annually	Fall	Ensures appropriate and effective fiscal oversight	<a href="http://web.admin.sc.edu/fr/reports.php">http://web.admin.sc.edu/fr/reports.php</a>
19	External Review only	Elliott Davis Decosimo: USCB Financial Statements Audit		Outside Organization	Annually	Fall	Ensures appropriate and effective fiscal oversight	<a href="http://web.admin.sc.edu/fr/reports.php">http://web.admin.sc.edu/fr/reports.php</a>
20	External Review and Report	USC Board of Trustees Health Promotion Program Follow-up Report	USC Board of Trustees	State	Annually	Summer	Ensures satisfactory implementation of new programs based on program proposal	Contact the USCB Office of Institutional Effectiveness & Research
21	External Review and Report	USC Board of Trustees Mathematics Program Follow-up Report	USC Board of Trustees	State	Annually	Summer	Ensures satisfactory implementation of new programs based on program proposal	Contact the USCB Office of Institutional Effectiveness & Research
22	Internal Review and Report	USCB Internal Institutional Effectiveness Report Reviews	USCB	State	Annually	June 30, 2018	Ensures ongoing effectiveness of USCB academic, administrative, student support, and other units	Contact the USCB Office of Institutional Effectiveness & Research