

AGENCY NAME:	FORESTRY COMMISSION		
AGENCY CODE:	P120	SECTION:	043

Fiscal Year 2020–2021 Accountability Report

SUBMISSION FORM

I have reviewed and approved the data submitted by the agency in the following online forms:

- Reorganization and Compliance
- Strategic Plan Results
- Strategic Plan Development
- Legal
- Services
- Partnerships
- Report or Review

I have reviewed and approved the financial report summarizing the agency’s budget and actual expenditures, as entered by the agency into the South Carolina Enterprise Information System.

The information submitted is complete and accurate to the extent of my knowledge.

AGENCY DIRECTOR (SIGN AND DATE):	Signature on file.
(TYPE/PRINT NAME):	Scott L. Phillips

BOARD/CMSN CHAIR (SIGN AND DATE):	Signature on file.
(TYPE/PRINT NAME):	Walter McPhail

FY 2020-2021 Agency Accountability Report
Reorganization and Compliance Responses:

These responses were submitted for the FY 2020-2021 Accountability Report by the

FORESTRY COMMISSION

Primary Contact:

First Name	Last Name	Role/Title	Phone	Email Address
Doug	Wood	Director of Communications & Public Information	803-896-8820	dwood@scfc.gov

Secondary Contact

First Name	Last Name	Role/Title	Phone	Email Address
Tom	Patton	Deputy State Forester	803-896-8849	tpatton@scfc.gov

Agency Mission

Protect, promote, and enhance South Carolina's forests for the benefit of all.

Adopted in: 2020

Agency Vision

Healthy forests, resilient communities, impeccable service

Adopted in: 2020

Recommendations for reorganization requiring legislative change.

No

Please list significant events related to the agency that occurred in FY 2020-2021.

Month Started	Month Ended	Description of Event	Agency Measures Impacted	Other Impacts
July	May	The most significant change completed this fiscal year is the reorganization of the agency's dispatch operations, which moved from under the purview of Information Technology to that of the Protection section. The purpose of the reorganization was to better align dispatch operations with the firefighting components of our organization.	None	

Does the agency intend to make any other major reorganization to divisions, departments, or programs to allow the agency to operate more effectively and efficiently in FY 2021-22?

Note: It is not recommended that agencies plan major reorganization projects every year. This section should remain blank unless there is a need for reorganization.

No

Is the agency in compliance with S.C. Code Ann. § 2-1-220, which requires submission of certain reports to the Legislative Services Agency for publication online and the State Library? See also S.C. Code Ann. § 60-2-20.

Yes

If not, please explain why.

Is the agency in compliance with various requirements to transfer its records, including electronic ones, to the Department of Archives and History? See the Public Records Act (S.C. Code Ann. § 20-1-10 through 20-1-180) and the South Carolina Uniform Electronic Transactions Act (S.C. Code Ann. § 26-6-10 through 26-10-210).

Yes

These responses were submitted for the FY 2020-2021 Accountability Report by the

FORESTRY COMMISSION

Does the law allow the agency to promulgate regulations?

Yes

Please list the law number(s) which gives the agency the authority to promulgate regulations.

§48-23-200

Has the agency promulgated any regulations?

Yes

Is the agency in compliance with S.C. Code Ann. § 1-22-120(J), which requires an agency to conduct a formal review of its regulations every five years?

Yes

AGENCY NAME:	South Carolina Forestry Commission		
AGENCY CODE:	P120	SECTION:	043

AGENCY’S DISCUSSION AND ANALYSIS

The SC Forestry Commission was created in 1927 with its General Duties defined in State Code 48-23-90. In summary, the Code requires the agency to make an annual report to the General Assembly on “forest conditions ... including recommendations to the public as to reforestation. ... to prevent, control and extinguish fires, including the enforcement of ... laws pertaining to the protection of the forests and woodlands give such advice, assistance and cooperation to private owners of land and promote ... appreciation by the public of the advantages of forestry and the benefits cooperate with the federal government in the distribution of funds allotted to the State for forestry ...” To meet its statutory requirements, the Forestry Commission created a mission, vision, and values statement and an associated Strategic Plan to direct its operations.

Commission staff and the agency’s Board of Commissioners conduct a detailed review and recording of the agency’s progress toward attaining Strategic Plan goals on a biannual basis. This action ensures that agency operations are properly aligned with its mission and informs the organization of its progress, direction, and purpose. This alignment also ensures that the Commission continues to effectively support the growth of the state’s forest industry to levels beyond its current \$21.2 billion economic impact and 98,000+ jobs, making it the #1 manufacturing segment in the state in terms of jobs, #2 labor income, and #3 in direct economic output (Fig. 1-3). Beyond forestry’s economic impact, forests cover two-thirds of the state at 12.9 million acres, enhancing the state’s quality of life.

The Commission has five primary goals identified in its Accountability Report (AR) that are aligned with its Mission, Strategic Plan, Forest Action Plan and statutory requirements. These goals are Enhance Public Benefits from Trees and Forests, Protect Forests from Harm, Conserve Working Forests, Raise Awareness about Our Forests, and Strengthen the Commission for the Future. For each goal, the agency has identified strategies, actions, and performance measures to ensure their accomplishment. It is important to note the AR this year reflects a change to the Commission’s new Strategic Plan and Forest Action Plan as adopted in 2020.

The AR provides the agency with the opportunity to submit a “Discussion and Analysis” section that comments on (1) Factors affecting the agency’s performance during the past year, (2) Performance efforts and results, and (3) Plans to improve performance. This comment section appears below and is organized by the agency’s five goals.

Goal 1: Enhance Public Benefits from Trees and Forests. This goal aims to increase the full range of benefits from South Carolina’s forests – including healthy and growing markets, new jobs, clean water, clean air, wildlife habitat, recreation, natural beauty, health benefits and more.

Factors affecting performance in the past year:

- Positive factors – SC’s accurate Forest Inventory & Analysis (FIA) timber inventory and record level of pine sawtimber support economic development. Continued capital investment within the forestry sector indicates that SC’s forest industry continues to grow and remains a pillar of the state’s economy (Fig. 1). Our public-private nursery partnership with ArborGen focuses agency efforts on tree improvement while still providing for high quality seedlings for South Carolina landowners. In 2020 the agency successfully recruited a tree improvement position to meet requirements for NC State Tree Improvement Cooperative participation. The Commission’s Tree Improvement program has increased revenue levels and is self-sustaining. Tree planting increased incrementally to 85.6 million seedlings in 2021 which is double the rate from a decade ago.
- Negative factors – COVID-19 impacts on businesses and the economy, decreasing supply of pine pulpwood and pine chip-n-saw, the current oversupply of pine sawtimber has decreased stumpage prices of large-diameter timber for forest landowners, and recent FIA data indicates a downward trend in forested acres, at the state level, primarily due to land conversion to agriculture and urban uses.

Performance efforts and results:

- Approximately \$571 million in capital investment projects announced in FY21. Announced projects will create 446 new jobs (Fig. 1). Two announcements, First Quality in Anderson County and International Paper in Richland County, totaled \$375 million.
- Total timber production from South Carolina forests increased 2% from 2018 to 2019 and was valued at more than \$1.06 billion (Fig. 2). The agency completed data collection for the 2020 TPO survey.

AGENCY NAME:	South Carolina Forestry Commission		
AGENCY CODE:	P120	SECTION:	043

- Continued to grow the SC Forest Products marketing program despite travel restrictions due to COVID-19. Published a forest product market report for the EU and UK and planned an in-bounds trade mission to promote log export to India.
- Completed the 2020 industry export report that determined the value of forest product exports from South Carolina to be \$946 million. This is down nearly 25% from 2019.
- Produced and sold 3.01 million seedlings during FY21. This is a 15% increase from FY20. Seedling production by the vendor, and thus sales, was 27% lower than our target as we continue the transition into the public-private partnership with Arborgen at Taylor Nursery.
- For FY21 the agency's Nursery and Tree Improvement Index, which is a composite measure that quantifies agency efforts to improve the health and productive capacity of planted timberlands, was calculated to be 6.22. This is 55% above the baseline, and was driven by strong seed sales and substantial improvements in the quality of the genetics of tree seed produced by our agency. Tree improvement efforts allows the agency to continue to provide loblolly pine seed with the best available genetics and ensure that SC landowners have access to the best available tree seedlings for planting in the future.
- Harvested 3,990 bushels of improved loblolly cones and 495 bushels of improved longleaf cones. Produced 1,314 pounds of 3rd generation improved loblolly seed. The Commission generated nearly \$316,000 from the sale of seed and cones. Established two loblolly pine progeny tests and maintained three additional tests as part of renewed membership in the North Carolina State Tree Improvement Cooperative.
- For FY21 the Forest Ecosystem Benefits Index was 6.54 which is more than 6% above the annual target. The agency Environmental Management Program provided 15.5 hours of instruction in 11 logger training programs with 98 participants. Conducted 250 BMP courtesy exams to aid in ensuring compliance. Compliance remains very high at 96%. BMP staff conducted more than 700 total site visits in FY21.
- For FY21 the Community Forestry index was 4.27 which is nearly 7% above baseline. The Urban and Community Forestry Program's outreach served an estimated 1.7 million citizens and provided more than 1900 training hours to communities and tree care professionals in FY21. A significant project completed by this program was the Planner's Forest Toolkit, which was created to place all of the urban forestry program and policy information in one publication.

Plans to improve performance:

- Continue to grow the SC Forest Products Marketing Program by publishing 1-2 market reports annually and leading SC companies that are interested in growing their export markets on trade missions to key countries. Develop success stories of companies assisted to grow their markets internationally.
- Establish a cost-share program to increase BMP compliance on stream crossings during forestry operations by assisting contractors in off-setting the high costs associated with the installation of compliant stream crossings, thereby improving water quality protection

Goal 2: Protect Forests from Harm. Protecting lives and property from wildfire, decreasing wildfire risk and damage, mitigating threats to forest health, and responding to disasters are critical components of the agency's mission.

Factors affecting performance in the past year:

- Positive factor – The agency continues to increase professional development of firefighters through additional training opportunities. Recent budget appropriations provided funding to allow the agency to procure 12 new enclosed-cab bulldozer firefighting units in FY21. Currently 71% of frontline firefighting bulldozers are the safer enclosed-cab units (Fig. 4). One million dollars of recurring funding was included in the FY22 budget appropriation to address the annual need for firefighting equipment ensuring the Commission has the funding needed to replace all open-cab bulldozers by the end of calendar year 2025.
- Negative factors - Reduced firefighting capacity - inexperienced personnel and 21% (34 of 160) of the frontline firefighting bulldozers exceeding safe service life (Fig. 4). Reduced capacity lessens the agency's ability to protect the forest resource, structures, the public and firefighters. Fire Management Officer capacity has been reduced by almost 50% since 2001.
-Difficultly recruiting new firefighters (bulldozer operators) due to workforce challenges and noncompetitive wages are impacting the agency's ability to respond to wildfires. Currently 6% (10 of 160) of the bulldozer

AGENCY NAME:	South Carolina Forestry Commission		
AGENCY CODE:	P120	SECTION:	043

operator positions are vacant with the average position being vacant nearly 9 months. Two of these positions have been vacant for more than a year. Recruiting challenges are a significant concern given the high number of firefighters that are eligible to retire over the next five years.

- Aircraft used for wildfire detection and suppression are exceeding safe service life.
- More complex wildfire control situations due to increased urbanization and lack of capacity.
- COVID-19 greatly impacted the agency’s ability to conduct in-person training and wildfire prevention programs.

Performance efforts and results:

- The agency purchased 12 safer enclosed-cab dozers, toward the 160 target, in FY21. The agency needs to procure 11-12 dozer units each year based on the 15-year safe service life for this firefighting equipment (Fig. 4).
- Average wildfire response time was 37.21 minutes in FY21, which is within the revised target response time of 38 minutes. This metric is slightly less than the FY20 average response time but is 1% above the five-year average (Fig. 5). In FY21 the agency revised its target, increasing it from 35 minutes to 38 minutes, due to long-term firefighter vacancies and the resulting larger coverage areas.
- The agency’s Type 2 Incident Management Team (IMT) continues to support an increasing role assisting with all-hazard emergency response efforts. During FY21 the IMT provided assistance for 59 days to a statewide COVID-19 vaccination clinic held in Richland County.
- As part of the agency’s succession planning efforts fire dispatch operations were moved from IT Division to the Protection Section, which increased interaction between Fire Staff and Dispatch. This also aligns dispatch operations under the Deputy State Forester, which strengthened interaction between Regional Operations and Dispatch.
- For FY21 the Wildfire Prevention Index was 4.78 which is nearly 20% above baseline. Wildfire prevention efforts have continued throughout the state including wildfire presentations that reached 115 people, 6 cooperators meetings for Community Wildfire Protection Plan developments and 2 community outreach events with 180 in attendance. Other prevention efforts have resulted in 43 community wildfire risk assessments in association with both Firewise USA communities and fuel mitigation grants which funded 700 acres of prescribed burning along with firebreak installation for a total of \$22,794 in grant funds.

Plans to improve performance:

- Request funding for a fire support position and 2 pilots to provide forward-looking fire weather outlooks, fire intelligence information, and to provide aerial detection and suppression support for wildfires. Request 2 fire dispatcher positions to bolster 24/7 fire dispatch operations and provide for succession planning needs.
- Request non-recurring funding to replace aircraft that are exceeding safe service life.
- Increase wildfire prevention efforts to reduce fire occurrence, including commissioning of additional law enforcement officers and the promotion of active forest management. Law enforcement and active forest management are two of the most effective fire prevention tools available.
- Strengthen safety and training programs for agency personnel and cooperators.

Goal 3: Conserve Working Forests. This goal aims to ensure the sustainability and active management of South Carolina’s forests, in order to maintain the economic, environmental and societal benefits these lands provide.

Factors affecting performance in the past year:

- Positive factor – High level of landowner satisfaction with the quality of assistance provided.
 - Negative factors - Lack of capacity – The current capacity of the agency does not allow the agency to provide technical assistance and outreach to family forest owners as we did historically or to the level that we feel is appropriate given current forest conditions and trends (Fig. 6). Foresters have been assigned more fire control duties due to inadequate Fire Management Officer capacity, further reducing capacity to provide landowner assistance.
- Insufficient cost-share funding for reforestation through the Forest Renewal Program has resulted in a backlog of greater than 1 year, decreasing the productive potential of family-owned forestlands. Insufficient reforestation exacerbates the decreasing supply of pine pulpwood and threatens economic development efforts.

AGENCY NAME:	South Carolina Forestry Commission		
AGENCY CODE:	P120	SECTION:	043

Performance efforts and results:

- The agency assisted 2,201 landowners during FY21 which is slightly more than the annual target. However, this is more than 34% below historical metrics. In FY01 the agency assisted 3,370 landowners. Shortfall is due to reduced capacity and recruitment/retention issues (Fig. 6).
- Achieved a 93% customer satisfaction level for forest management assistance for FY21 (97% in FY20).
- Reforestation was completed on 12,448 acres via the Forest Renewal Program (FRP) during FY21. FRP is a cost-share program that incentivizes private investments in forestry to increase the productivity of SC's forests. To date, more than 370,000 acres have been reforested using FRP assistance.
- The State Forest system generated nearly \$3.9 million in total revenue from the sale of forest products and paid nearly \$952,000 to counties in which they operate. The agency operates its State Forests 100% from revenue generated by the management of these properties using no state-appropriated funds to support their operation. The agency's ability to operate the State Forests without state funding, while providing 25% of its gross proceeds to the counties in which they are located, illustrates the productive capacity of actively managed forests and the good stewardship of this agency. Since 2011, the SCFC has paid more than \$8.3 million to schools in the counties in which the State Forests are located (Fig.7).
- Harvest scheduling models for State Forests are being used to ensure that these properties continue to be managed on a sustainable basis and that revenue production is optimized. Dual third-party certification through the American Tree Farm System and the Sustainable Forestry Initiative ensure that State Forests are managed to the highest standards.
- SCFC is providing professional forest management assistance to the USDA Forest Service through the Good Neighbor Authority (GNA) program. During FY21 the agency facilitated the reforestation of ~100 acres of pines on the Frances Marion National Forest as well as continued the administration of a 496-acre timber harvest. Oversight was also provided for a SCDNR-administered GNA timber sale on the Sumter National Forest. By partnering with the USDA Forest Service using GNA the Forestry Commission can help increase the flow of economic, environmental and social benefits from National Forest lands in South Carolina.

Plans to improve performance:

- Request funds for seven additional positions to increase capacity for landowner services and outreach while also increasing firefighting capacity. Requested positions will be crucial for agency succession planning efforts.
- Strengthen training programs for agency personnel to deliver services more efficiently.
- Continue to refine harvest scheduling model for State Forests to provide a more accurate estimate of revenue.
- Evaluate opportunities to increase funding for cost-share assistance programs.

Goal 4: Raise Awareness about Our Forests. Raising awareness among decision-makers and the public about the environmental, economic and societal benefits of active forest management is necessary to acquire needed legislation/policies, garner public support, and support private landowner timber production.

Factors affecting performance in the past year:

- Positive factors - Small but talented and dedicated staff in the agency's Communication & Public Information Division.
 - Efficient use of website, social media and collaboration with partners allows broad distribution of messaging at low cost.
 - Technical staff collaborates with design staff to create high-impact publications.
- Negative factors - Understaffing in the Communication & Public Information Division creates the lack of specialization needed for a more robust integrated marketing communications program, which also leads to missed opportunities for public relations and outreach. Difficulty recruiting entry level foresters is negatively impacting FIA production.

Performance efforts and results:

- FIA plot production was 102% of the target for FY21, and accuracy scores remain very high (>94%). Progress in plot production would have been higher, save for a spate of vacancies during the last quarter of the fiscal year.
- Agency staff conducted forestry education programs that reached 2,600 participants during FY2020-21. This is 35% below the target. Shortfall is due to a drastic reduction of outreach activities because of COVID-19.

AGENCY NAME:	South Carolina Forestry Commission		
AGENCY CODE:	P120	SECTION:	043

- The outreach effort index for FY21 is 6.28 which is 57% above the baseline. Despite the reduced number of participants in education programs this year, the Communications & Public Information (C&PI) staff bolstered its effectiveness by producing 92 publications and providing more than 500 combined internal and external assists. Assists are defined as collaborations between the C&PI staff and either internal or external partners in which media/communications collaterals are produced (videos, press releases, photography, logos, physical or virtual items, interviews, joint projects, etc.).
- Education and Communication staffs collaborated on a redesign of the agency’s Environmental Education Center, outfitting the lobby with forestry-themed, museum-style exhibits and interpretive displays. The makeover now gives visitors a primer on the history of Harbison State Forest as well as an introduction to what the agency calls the “three pillars of forestry,” which conveys the societal, economic and environmental benefits of forestry.
- Produced a combination of 13 radio and TV public service announcements that aired on 110 radio stations and 37 TV outlets across the state from January to April. The commercials range in topics from the agency’s multifaceted mission and our wildfire suppression responsibilities to forest management assistance for landowners as well as the overall economic impact of forestry in the state.
- The Communications, Forest Health and Urban Forestry staffs collaborated on a comprehensive Invasive Species manual that won one of the 10 SC State Library’s Notable State Documents Awards for the 2020 calendar year. The Forestry Commission has won this award five out of the last six years with a variety of publications about the forest resource, economic development and the Forest Renewal Program.

Plans to improve performance:

- Request one additional position and operating funds to increase communications and outreach capacity to promote the advantages of forestry and the benefits of active forest management to landowners and the public.
- Launch redesigned agency website during Fall of 2021.
- Leverage partnerships to amplify messaging.

Goal 5: Strengthen the Commission for the Future. This goal aims to strengthen the Forestry Commission through employee development, improvements in efficiency and effectiveness, and a renewed focus on safety so as to meet the future needs of the citizens of SC.

Factors affecting the agency’s performance in the past year:

- Positive factors – Increased appropriations have enabled the restoration of critical positions, over the last few years, that allow the agency to better serve the forestry community of SC. Recent budget appropriations provided funding to allow agency to address compensation issues in critical areas, improving recruitment and retention efforts. The FY22 budget included funding to improve staffing and operations of IT Division which will allow the agency to implement State Information Security initiatives, reduce risks and better support agency operations.
- Negative factors - Limited capacity in critical program areas is causing firefighters and foresters to cover greater territory, increasing response time, fire size, and wildfire damage risk while reducing landowner assistance, wildfire prevention and outreach (Fig. 5, 6).
-Inadequate FTEs for needed workforce/succession planning and implementation. Forty-one percent of the agency’s workforce is eligible to retire within 5 years and 26% are currently beyond the eligibility to retire.

Performance efforts and results:

- During FY21 the agency began transitioning to the agency’s revised Strategic Plan and Forest Action Plan. With recent changes in agency leadership and a federal requirement to perform a 10-year update of the state’s Forest Action Plan, this was a great time to revise these documents in a way that truly integrates them, aligns agency actions and drives the Forestry Commission towards our vision. The revised strategic plan was adopted by the Board of Commissioners on August 6, 2020. The Forest Action Plan was approved by the USDA Forest Service during FY21.
- Agency efforts to address compensation issues in recent years have greatly improved recruitment and retention efforts. The overall turnover rate for FY21 is 9.2%. Results from the FY18 employee engagement survey

AGENCY NAME:	South Carolina Forestry Commission		
AGENCY CODE:	P120	SECTION:	043

indicated that employees were extremely dissatisfied with compensation, and non-competitive salaries are one of the agency's biggest barriers to recruitment and retention.

- Conducted an employee engagement survey, identical to the FY18 survey, during the spring of 2021. By measuring employee engagement using a repeatable methodology we can see what has changed since 2018 and if the actions implemented in response to employee feedback lead to improvements. The results were extremely positive and showed significant improvements in every category. The employee engagement index for FY21 is 7.53 which is an 85% improvement over the FY18 results (4.07).
- Implemented biannual "pulse" employee engagement surveys. These short surveys provide more frequent feedback from employees to allow agency to better monitor employee engagement as we seek to continually improve the agency's work environment.

Plans to improve performance:

- Continue biannual "pulse" employee engagement surveys and periodic full employee engagement surveys to understand employee perspectives and leverage results to increase employee engagement and create an environment where all employees feel valued and are motivated to help the SCFC be successful.
- Request funding for an attorney position to be the agency's general counsel and primary point of contact for legislative matters and 13 other critical positions, noted in previous sections of this report.
- Pilot new firefighting positions using existing FTEs that will mitigate limited capacity of Fire Management Officer positions while providing training and experience needed for succession planning purposes.
- Strengthen safety and training programs for agency employees to ensure they are prepared to meet the current and future demands of our mission.

SUMMARY AND CONCLUSION

This Accountability Report fulfills its two primary purposes: providing information supporting the agency's budget and providing a basis for Agency Head Salary Commission decisions. The report describes the agency's Strategic Plan contents, performance measures, and outcomes and has linked program area attributes to key financial and performance measures as required by statute. The Commission appreciates this opportunity to document that the agency understands its legal mandates, meets its requirements, documents current outcomes, and plans to ensure successful future outcomes.

In summary, the agency's job #1 continues to be the safety of employees and the public that they serve and protect. To meet this goal, staffing and training must be adequate (Goal 5). Staff must also have adequate quantities of safe, reliable equipment. Budget requests are designed to ensure safe working conditions for employees and living conditions for the public. Another top priority is the satisfaction and care of agency customers, the citizens of South Carolina. Meeting this objective requires adequate funding and highly qualified, well trained employees that meet individual citizens' needs as well as the overarching need to protect the forest resource and retain and increase forest industry job numbers statewide (Goals 1-5). Adequate funding and sound management guided by this AR will ensure that the agency meets these highest priority objectives and supporting ones and accomplishes its statutory duties to *"Protect, promote and enhance South Carolina's forests for the benefit of all."*

Risk Assessment and Mitigation Strategies

The results of the agency failing to accomplish its mission to "Protect, promote and enhance South Carolina's forests" would be as follows:

The most negative impact from a failure to protect the forest resource from wildfires would be uncontrolled wildfires that would destroy forests, structures, and lives, in turn resulting in a cascade of negative effects. Among these would be the loss of timber resources and investment returns for private landowners; decline of forest product manufacturing capacity and therefore jobs; wildlife habitat destruction; impaired water quality; soil erosion, lost recreational opportunities and revenue; increased timber theft and fraud on private lands; destruction of homes and businesses, and deaths.

The most negative impact from a failure to promote and enhance the forest resource would be a decline in forest industry retention and growth, which also would set into motion additional adverse consequences. Not only would the resultant lack of markets lead to reduced returns on landowner investments, but it would also cause a decline in

AGENCY NAME:	South Carolina Forestry Commission		
AGENCY CODE:	P120	SECTION:	043

active forest management, which equates to less timber production and therefore fewer industry jobs. Secondary effects from this lack of development and management would be an increase in forest insect and disease damage, increased wildfire risk, deforestation, damage to forested wetlands and waterways, and a decline in the public’s understanding of the value of forests and the forest industry.

Outside help needed to mitigate the failure of the agency to accomplish its mission would consist of:

- Requesting additional fire protection resources from surrounding states, through the Southeastern Forest Fire Protection Compact and US Forest Service, which would require additional state funds to pay for these resources.
- Additional federal funding/staffing for economic development, technical assistance to family forest owners, and for wildfire suppression/prevention efforts.

To help resolve the issue before it became a crisis, the General Assembly could do the following:

- Provide funding and FTEs for critical agency positions.
- Provide non-recurring funding to procure 2 newer aircraft for fire suppression efforts.
- Provide stable funding for retaining and growing the forest industry and encouraging landowners to actively manage their forest resources and grow more timber.

Figure 1. Forest-based economic development impact

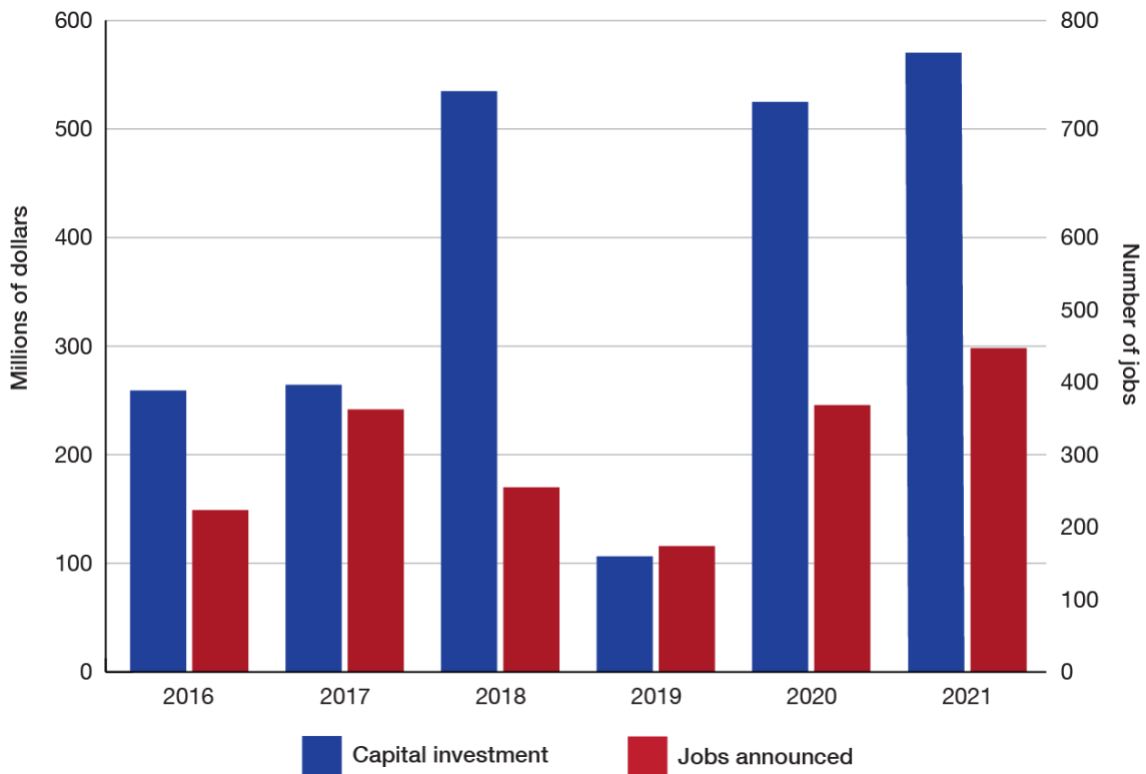


Figure 2. SC production of primary timber products

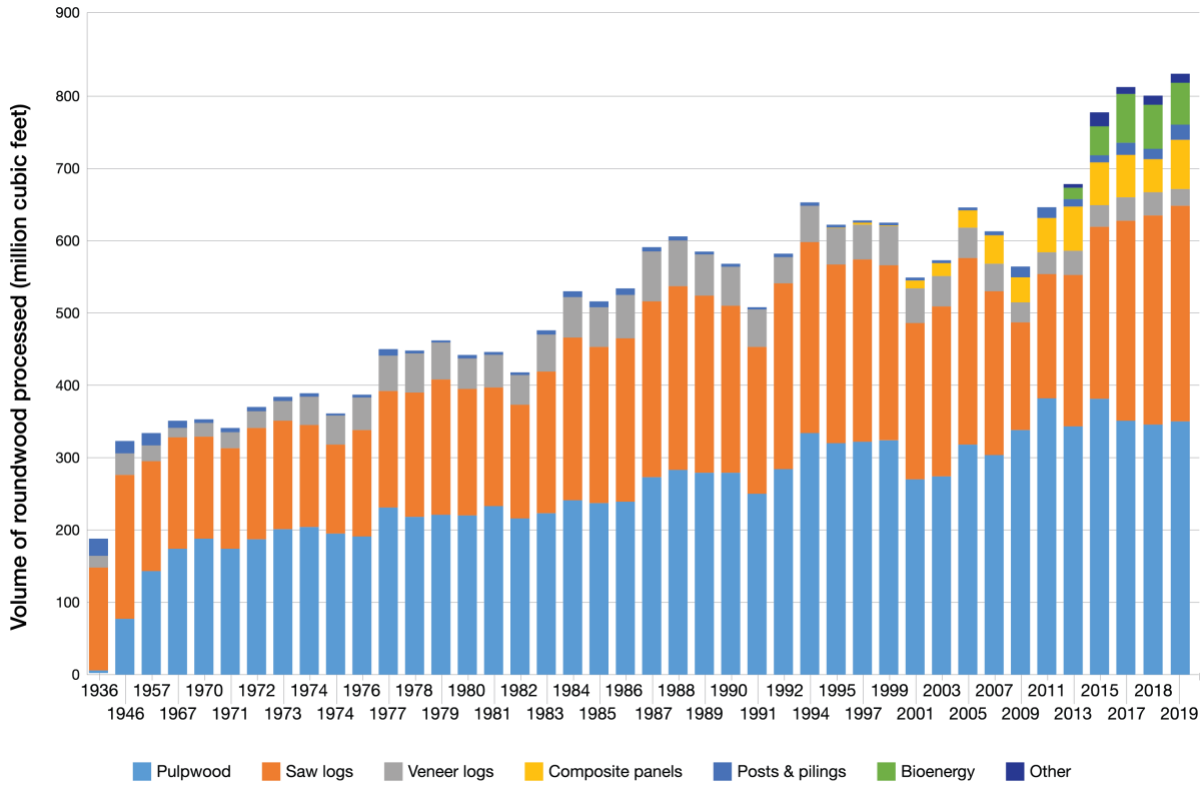


Figure 3. Percent contribution to SC's economy, by forestry sector, 2018

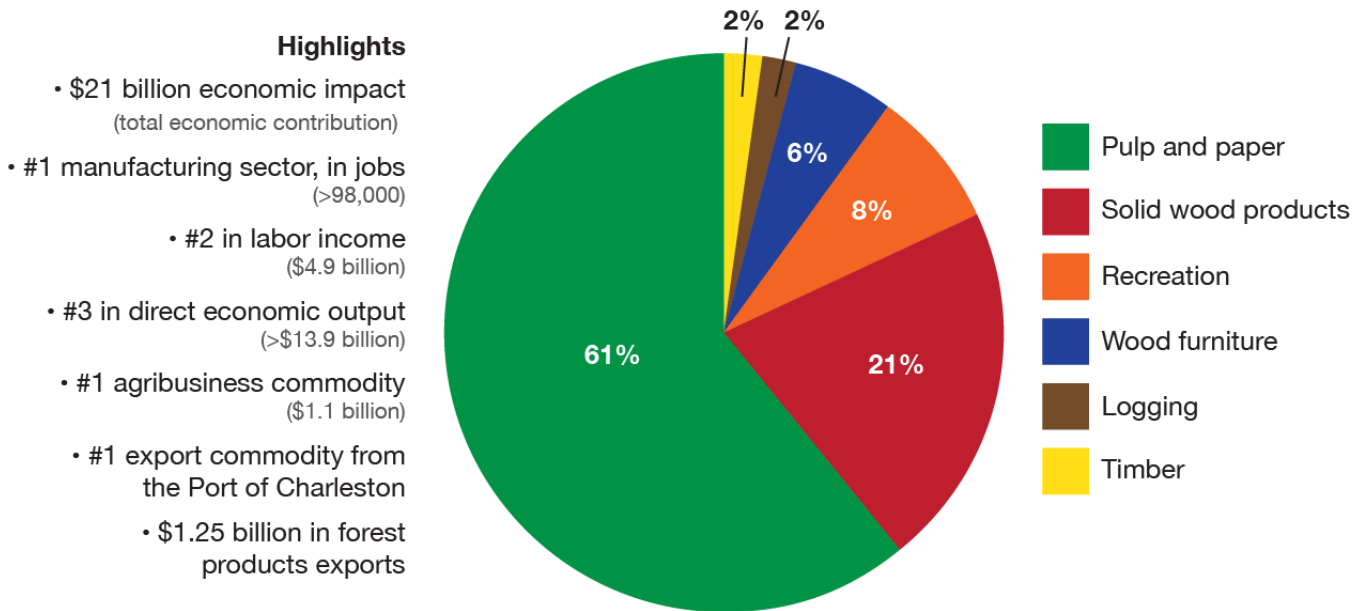


Figure 4. Firefighting dozers by service life category, FY2021

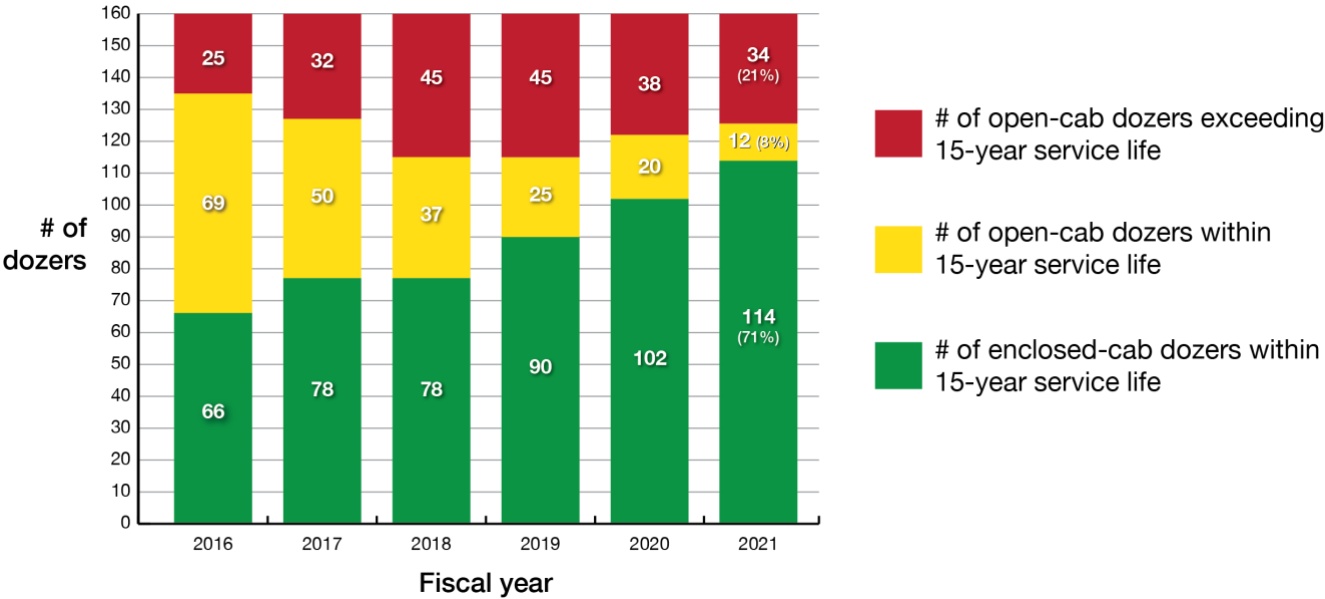
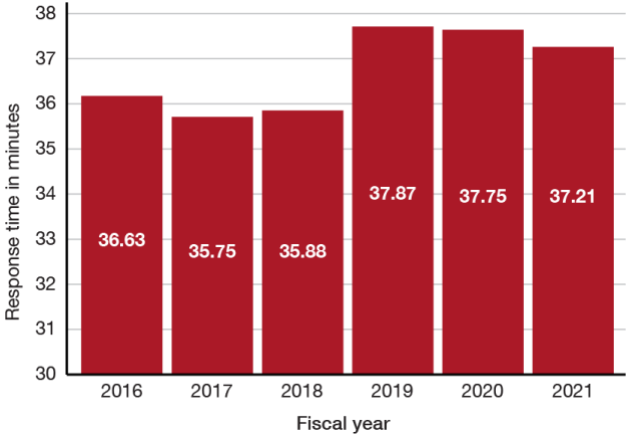


Figure 5. Average fire response time in minutes
(goal: 38 minutes or less at full staffing levels)



AGENCY NAME:

South Carolina Forestry Commission

AGENCY CODE:

P120

SECTION:

043

Figure 6. Landowners assisted and project foresters by fiscal year

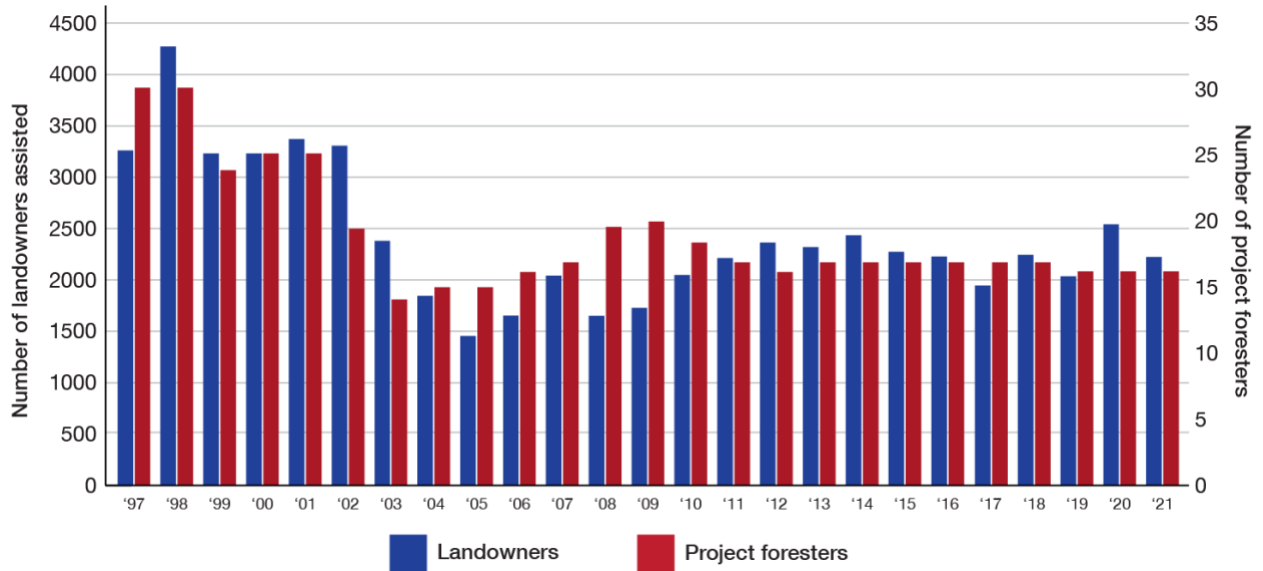
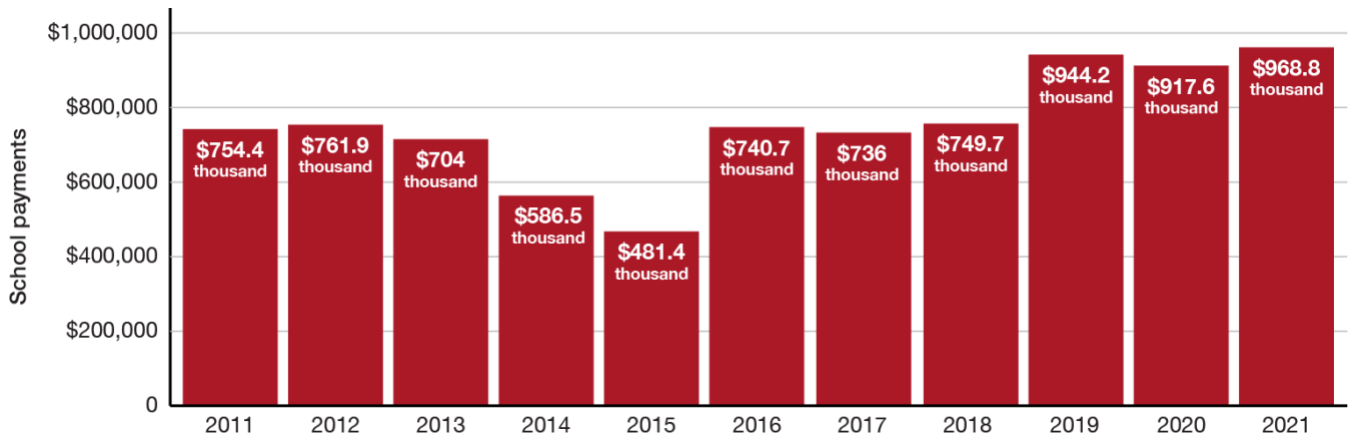
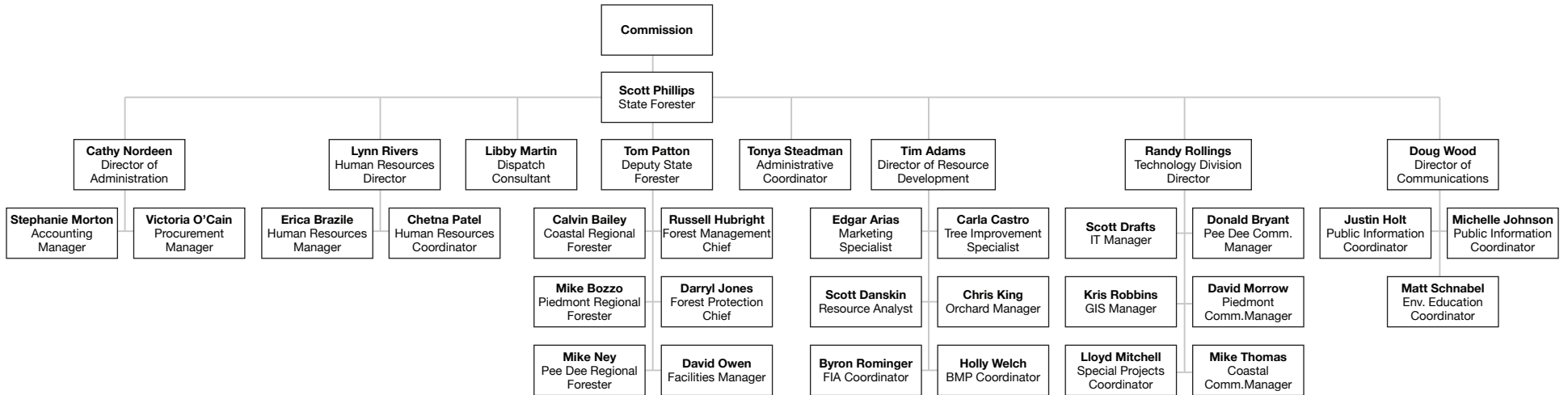


Figure 7. Payments to county school districts from State Forests system





South Carolina
Forestry Commission
Organizational Chart



FY2020-21 Strategic Plan:

These responses were submitted for the FY 2020-2021 Accountability Report by the
FORESTRY COMMISSION

Goal Enhance Public Benefits From Trees And Forests

Strategy 1.1

Statewide Enterprise Objective

Promote programs and practices that safeguard South Carolina's water, air, soil, wildlife habitat, recreation and natural beauty.

Public Infrastructure and Economic Development

Measure Number	Description	Base	Target	Actual	Value Type	Desired Outcome	Time Applicable	Calculation Method	Data Source	Data Location	Primary Stakeholder	Stakeholder Need Satisfied	State Funded Program Number Responsible	Notes
1.1.1	Forest ecosystem benefits index	0	6.15	6.54	Rank	equal to or greater than	State Fiscal Year (July 1 - June 30).	This index rank is calculated as a weighted composite score with a minimum value of 1 and a maximum value of 10 incorporating the following metrics: Percent BMP compliance rate from Courtesy Exams; percent BMP compliance rate from BMP Monitoring; number of BMP Courtesy Exam and BMP monitoring site visits; contact hours of BMP/TOP programs delivered; number of active ecosystem service projects	Agency records	These data are stored on BMP Program Manager computers.	The primary stakeholders are downstream water intakes and recreational water users.	Water quality is adequately protected for downstream water users when index score is high.	0505.010000.000	

Goal Enhance Public Benefits From Trees And Forests														
Strategy 1.2										Statewide Enterprise Objective				
Deliver programs and services that retain, develop and expand sustainable timber and non-timber markets										Public Infrastructure and Economic Development				
Measure Number	Description	Base	Target	Actual	Value Type	Desired Outcome	Time Applicable	Calculation Method	Data Source	Data Location	Primary Stakeholder	Stakeholder Need Satisfied	State Funded Program Number Responsible	Notes
1.2.1	Announced capital investment in forestry (millions \$)	\$521.90	\$250.00	\$571.40	Dollar Amount	equal to or greater than	State Fiscal Year (July 1 - June 30).	Sum of \$ capital investment announced	SC Forestry Commission (SCFC) and SC Department of Commerce (SCDOC) Records	These data are stored on Resource Development Division computers.	All forest landowners benefit from additional markets.	Forest landowners benefit from the announcement of new forest product markets as there is more demand for their wood.	0505.010000.000	
1.2.1	Forest markets development index	0	5	5.21	Rank	equal to or greater than	State Fiscal Year (July 1 - June 30).	This index rank is calculated as a weighted composite score with a minimum value of 1 and a maximum value of 10 incorporating the following metrics: Number of agency-led trade events; number of active economic development projects; number of business assists; number of market-related publications; and percent of TPO surveys completed	Agency records	These data are housed on Resource Development program computers.	Forest industry.	Retaining and growing markets for forest products	0505.010000.000	
1.2.2	Announced new job creation in forestry	381	250	446	Count	equal to or greater than	State Fiscal Year (July 1 - June 30).	Sum of # new jobs announced	SCFC and SCDOC Records	These data are stored on Resource Development Division computers.	The South Carolina workforce, including loggers.	The South Carolina workforce benefits when forest product announcements create jobs.	0505.010000.000	
1.2.3	Industry Timber Production and Consumption (thousand cubic feet)	803713	800000	819861	Count	equal to or greater than	Calendar Year (January 1 - December 31)	Data derived from TPO survey	US Forest Service Timber Products Output (TPO) Program	The individual mill data resides on SCFC and USDA FIA computers.	Forest industry.	Forest industry is the primary user of TPO data to gauge the health and sustainability of the industry.	0505.010000.000	

Goal Enhance Public Benefits From Trees And Forests														
Strategy 1.3										Statewide Enterprise Objective				
Engage communities to grow and sustain healthy trees and forests										Public Infrastructure and Economic Development				
Measure Number	Description	Base	Target	Actual	Value Type	Desired Outcome	Time Applicable	Calculation Method	Data Source	Data Location	Primary Stakeholder	Stakeholder Need Satisfied	State Funded Program Number Responsible	Notes
1.3.1	Community Forestry Index	0	4	4.27	Rank	equal to or greater than	State Fiscal Year (July 1 - June 30).	This index rank is calculated as a weighted composite score with a minimum value of 1 and a maximum value of 10 incorporating the following metrics: Number of people served; number of annual Tree City USA designations; contact hours delivered on urban forestry topics; contact hours delivered specific to community and county planning	Agency records	Federal CARS database, Urban Forestry Coordinator's records, Arbor Day Foundation	Urban and suburban residents	Ecosystem benefits of trees	0505.010000.000	

Goal Enhance Public Benefits From Trees And Forests														
Strategy 1.4										Statewide Enterprise Objective				
Engage in tree improvement to improve the health and productive capacity of our forests										Public Infrastructure and Economic Development				
Measure Number	Description	Base	Target	Actual	Value Type	Desired Outcome	Time Applicable	Calculation Method	Data Source	Data Location	Primary Stakeholder	Stakeholder Need Satisfied	State Funded Program Number Responsible	Notes
1.4.1	Nursery & Tree Improvement Index	0	4	6.22	Rank	equal to or greater than	State Fiscal Year (July 1 - June 30).	This index rank is calculated as a weighted composite score with a minimum value of 1 and a maximum value of 10 incorporating the following metrics: Nursery and Tree Improvement total revenue; bushels of improved cones harvested; percent of seedling quota sold annually; PRS composite score of seed sold; number of active progeny tests	Agency records	These data are stored on N&TI Program Manager computers.	Forest landowners in SC.	High quality seedlings are available to SC landowners at competitive prices.	0505.010000.000	

Goal Protect Forests From Harm														
Strategy 2.1											Statewide Enterprise Objective			
Ensure prompt and effective response to wildfires and other disasters in an increasingly complex environment											Maintaining Safety, Integrity and Security			
Measure Number	Description	Base	Target	Actual	Value Type	Desired Outcome	Time Applicable	Calculation Method	Data Source	Data Location	Primary Stakeholder	Stakeholder Need Satisfied	State Funded Program Number Responsible	Notes
2.1.1	Average Wildfire Response Time (minutes)	37.75	≥38	37.21	Acceptable Range	equal to or less than	State Fiscal Year (July 1 - June 30).	Time between initial report of wildfire and arrival of first firefighting unit	Agency Dispatch Records	Logisys FirstCall Computer-Aided Dispatch System (CADS), accessed by agency dispatch personnel, communication technicians and fire staff	General public	Public safety	0505.010000.000	
2.1.2	Frontline Firefighting Dozers with enclosed cabs	64%	80%	71%	Percent	equal to or greater than	State Fiscal Year (July 1 - June 30).	Number of enclosed cabs divided by desired frontline fleet	Agency fleet records	Fleet360 Access database maintained and accessed in-house by the agency fleet manager.	General public, dozer operators	Safety	0505.010000.000	
2.1.3	Frontline Firefighting Dozers within 15- year service life	79%	84%	79%	Percent	equal to or greater than	State Fiscal Year (July 1 - June 30).	Number of bulldozers within 15-year service life divided by desired frontline fleet	Agency fleet records	Fleet360 Access database maintained and accessed in-house by the agency fleet manager.	General public, dozer operators	Safety	0505.010000.000	

Goal Protect Forests From Harm														
Strategy 2.2										Statewide Enterprise Objective				
Develop and deliver innovative prevention programs that reduce wildfire risks to forests and communities										Maintaining Safety, Integrity and Security				
Measure Number	Description	Base	Target	Actual	Value Type	Desired Outcome	Time Applicable	Calculation Method	Data Source	Data Location	Primary Stakeholder	Stakeholder Need Satisfied	State Funded Budget Program Number Responsible	Notes
2.2.1	Wildfire Prevention Index	0	4	4.78	Rank	equal to or less than	State Fiscal Year (July 1 - June 30).	This index rank is calculated as a weighted composite score with a minimum value of 1 and a maximum value of 10 incorporating the following metrics: acres of fuel mitigation treatments implemented by SCFC; number of new wildfire risk assessments completed for communities; ratio of prevention efforts to the number of wildfire causes 4 and 5 (escaped debris burns and arsons, respectively); and acres covered by Community Wildfire Protection Plans to improve wildfire risk	Agency records	These data are stored in a combination of places, including in Access databases on individual program managers' computers, the Southern Wildfire Risk Assessment (SouthWRAP) web application, and through the online geographic information system services provided by ArcGIS.	General public	Safety	0505.010000.000	

Goal Conserve Working Forests														
Strategy 3.1										Statewide Enterprise Objective				
Support landowners with programs and services that promote active forest management and help them meet their goals										Government and Citizens				
Measure Number	Description	Base	Target	Actual	Value Type	Desired Outcome	Time Applicable	Calculation Method	Data Source	Data Location	Primary Stakeholder	Stakeholder Need Satisfied	State Funded Budget Program Number Responsible	Notes
3.1.1	Number of Landowners Assisted	2542	2200	2201	Count	equal to or greater than	State Fiscal Year (July 1 - June 30).	Total number of forest landowners who receive assistance documented by a case file or other written record. A landowner is to be recorded only once during a fiscal year regardless of the number of times assisted.	SCFC 3209-1 Database	This data is stored on the SCFC server. The data is recorded by Project Foresters and entered into the database by regional staff.	Forest landowners	Forest landowners need the assistance that is provided in order to make informed decisions regarding the management of their forestland.	0505.010000.000	
3.1.2	Forest management assistance customer satisfaction level	97%	95%	93%	Percent	equal to or greater than	State Fiscal Year (July 1 - June 30).	Averaging of all survey responses from recipients of RFA and Stewardship plans, forestry services, and cost-share assistance	SCFC Survey	The Forest Management Section of SCFC calculates this data and houses it	Forest landowners	This measure describes how well the agency is meeting the needs of one of its key customers.	0505.010000.000	
3.1.3	Landowner Assistance Index	0	4	5.53	Rank	equal to or greater than	State Fiscal Year (July 1 - June 30).	This index rank is calculated as a weighted composite score with a minimum value of 1 and a maximum value of 10 incorporating the following metrics: Number of new or revised Forest Stewardship Plans in priority areas; percent of acres of Forest Stewardship Plans in priority areas; percent implementation of Stewardship plans; number of non-cost-share plans; number of cost-share plans, oldest FRP application (in days); and average time between FRP funding and completion	Agency records	The Forest Management Section of SCFC calculates this data and houses it	Forest landowners	Forest landowners need the assistance that is provided in order to make informed decisions regarding the management of their forestland.	0505.010000.000	

Goal Conserve Working Forests														
Strategy 3.2										Statewide Enterprise Objective				
Promote and increase the responsible use of prescribed fire										Government and Citizens				
Measure Number	Description	Base	Target	Actual	Value Type	Desired Outcome	Time Applicable	Calculation Method	Data Source	Data Location	Primary Stakeholder	Stakeholder Need Satisfied	State Funded Budget Program Number Responsible	Notes
3.2.1	Prescribed Fire Effort Index	0	4	4.19	Rank	equal to or greater than	State Fiscal Year (July 1 - June 30).	This index rank is calculated as a weighted composite score with a minimum value of 1 and a maximum value of 10 incorporating the following metrics: Total acres prescribed burned by all sources; percent of prescribed burns acres conducted by Certified Prescribed Fire Managers (CPFM); acres prescribed burned by SCFC under service contracts; acres prescribed burned on State Forests; percent of SCFC prescribed burn contract acres completed; acres of standby service delivered; contact hours of CPFM training provided	Agency records	SCFC Dispatch Database	General public	Reduced risk of wildfire	0505.010000.000	

Goal Conserve Working Forests

Strategy 3.3

Statewide Enterprise Objective

Demonstrate practices for the active, sustainable, multiple-use management of State Forests, and engage other public land owners to do the same

Government and Citizens

Measure Number	Description	Base	Target	Actual	Value Type	Desired Outcome	Time Applicable	Calculation Method	Data Source	Data Location	Primary Stakeholder	Stakeholder Need Satisfied	State Funded Budget Program Number Responsible	Notes
3.3.1	Public Lands Management Index	0	4	8.53	Rank	equal to or greater than	State Fiscal Year (July 1 - June 30).	This index rank is calculated as a weighted composite score with a minimum value of 1 and a maximum value of 10 incorporating the following metrics: net annual carryover; net cumulative carryover; percent of harvested acres goal attained; acres of pine straw sold; percent of threatened & endangered active red-cockaded woodpecker clusters growth attained; community involvement and landowner outreach (research and landowner demonstration); and other public lands consultation response	Agency records	State Lands Program Manager compiles this data and houses it	General public	The need for active forest management on public lands to produce the full suite of benefits of forestry: economic, social and environmental.	1010.000000.000	

Goal: Conserve Working Forests														
Strategy: 3.4 Actively seek opportunities to acquire land to grow the State Forest system										Statewide Enterprise Objective: Government and Citizens				
Measure Number	Description	Base	Target	Actual	Value Type	Desired Outcome	Time Applicable	Calculation Method	Data Source	Data Location	Primary Stakeholder	Stakeholder Need Satisfied	State Funded Budget Program Number Responsible	Notes
3.4.1	Number of land acquisition projects evaluated	0	1	3	Count (whole number)	equal to or greater than	State Fiscal Year (July 1 - June 30).	Sum of active land acquisition projects evaluated	Agency records	State Lands Program Manager compiles this data and houses it	General public	The need to add land to the State Forest system to realize the full suite of benefits of forestry: economic, social and environmental.	1010.000000.001	

Goal: Raise Awareness About Our Forests														
Strategy: 4.1										Statewide Enterprise Objective				
Promote the Forestry Commission as South Carolina's first and foremost source for forest management information and assistance										Education, Training, and Human Development				
Measure Number	Description	Base	Target	Actual	Value Type	Desired Outcome	Time Applicable	Calculation Method	Data Source	Data Location	Primary Stakeholder	Stakeholder Need Satisfied	State Funded Budget Program Number Responsible	Notes
4.1.1	Outreach Effort Index	0	4	6.28	Rank	equal to or greater than	State Fiscal Year (July 1 - June 30).	This index rank is calculated as a weighted composite score with a minimum value of 1 and a maximum value of 10 incorporating the following metrics: Number of PLT program participants reached through workshops; number of non-PLT forestry/conservation program participants reached by SCFC; number of publications produced; number of internal communication assists; number of external communication assists	Agency records	The component data for this index are stored in a variety of places, including on individual program managers' computers and in shared resources like Google Sheets/Docs	General public	Awareness of forestry-related information and educational resources	1511.000000.000	
4.1.2	Social Media Analytics Index	0	4	4.37	Rank	equal to or greater than	State Fiscal Year (July 1 - June 30).	This index rank is calculated as a weighted composite score with a minimum value of 1 and a maximum value of 10 incorporating the following metrics: FACEBOOK – number of posts, follows, average daily reach, engagement rate, messenger response rate TWITTER – posts, engagements, follows, impressions YOUTUBE – subscribers, number of new videos, views, likes	Social media statistics	The component data for this index are stored in the respective reporting sections of the three social media platforms listed.	General public	Awareness of forestry-related information and educational resources	1511.000000.000	

Goal: Raise Awareness About Our Forests														
Strategy: 4.2										Statewide Enterprise Objective				
Educate the public on the environmental benefits of working forests and the role of strong markets and family forest owners in keeping our forests healthy										Education, Training, and Human Development				
Measure Number	Description	Base	Target	Actual	Value Type	Desired Outcome	Time Applicable	Calculation Method	Data Source	Data Location	Primary Stakeholder	Stakeholder Need Satisfied	State Funded Budget Program Number Responsible	Notes
4.2.1	Number of active certified PLT facilitators	0	40	47	Count (whole number)	equal to or greater than	State Fiscal Year (July 1 - June 30).	Total active, certified Project Learning Tree facilitators in network	Agency records	These data are stored in an Excel file on the computer of the agency's Environmental Education Coordinator.	School-age children who are exposed to Project Learning Tree curriculum by their teachers who are PLT-certified	Awareness of forestry-related information and educational resources	1511.000000.000	

Goal Strengthen The Commission For The Future														
Strategy 5.1										Statewide Enterprise Objective				
Prioritize safety across all agency operations										Education, Training, and Human Development				
Measure Number	Description	Base	Target	Actual	Value Type	Desired Outcome	Time Applicable	Calculation Method	Data Source	Data Location	Primary Stakeholder	Stakeholder Need Satisfied	State Funded Budget Program Number Responsible	Notes
5.1.1	Lost-time incidents that resulted in day(s) away from work		2	1	Count (whole number)	equal to or less than	State Fiscal Year (July 1 - June 30).	Secondary reporting from predetermined calculations	Claims Activity Report & Accord Form, Daily	This data is stored in SCEIS and accessed when necessary by appropriate Human Resources agency personnel.	Agency employees, general public	Employee safety	0100.000000.000	
5.1.2	Work-related accidents/injuries		7	4	Count (whole number)	equal to or less than	State Fiscal Year (July 1 - June 30).	Reported number of incidents	Claims Activity Report & OSHA Form 300, SCEIS leave records, Daily	This data is stored in SCEIS, agency records and is accessed when necessary by appropriate Human Resources agency personnel.	Agency employees	Safety	0100.000000.000	

Goal	Strengthen The Commission For The Future												
Strategy	5.2										Statewide Enterprise Objective		
Develop and maintain a workforce that is inclusive, skilled, engaged and productive										Education, Training, and Human Development			

Measure Number	Description	Base	Target	Actual	Value Type	Desired Outcome	Time Applicable	Calculation Method	Data Source	Data Location	Primary Stakeholder	Stakeholder Need Satisfied	State Funded Budget Program Number Responsible	Notes
5.2.1	Employee Engagement Index	0	4	7.53	Rank	equal to or less than	State Fiscal Year (July 1 - June 30).	The index rank is calculated using a moving average of periodic employee engagement survey results keying on four indicators of employee engagement: employee pride in workplace, employee looks forward to work, employee willing to recommend working at the agency to friend, and employee belief that agency is a good place to work.	Employee engagement survey results and agency records	This data is stored on the computers of the contracted vendor and the State Forester.	General public and agency employees	An engaged, productive and efficient Forestry Commission workforce focused on protecting and serving the citizens of South Carolina.	0100.000000.000	

Goal: Strengthen The Commission For The Future														
Strategy: 5.3										Statewide Enterprise Objective				
Closely monitor structure and staffing to ensure that the organization efficiently and effectively meets its mission as the future unfolds and conditions change										Education, Training, and Human Development				
Measure Number	Description	Base	Target	Actual	Value Type	Desired Outcome	Time Applicable	Calculation Method	Data Source	Data Location	Primary Stakeholder	Stakeholder Need Satisfied	State Funded Budget Program Number Responsible	Notes
5.3.1	Turnover rate	8%	10%	9%	Percent	equal to or less than	State Fiscal Year (July 1 - June 30).	Number of separations during a month divided by the average number of employees during that same time period, multiplied by 100.	PEBA database; SCEIS; personnel files	This data is stored in SCEIS, PEBA database and in agency records, and is accessed when necessary by appropriate Human Resources agency personnel.	Agency employees	Productivity, efficiency	0100.000000.000	

FY 2020-2021 Agency Accountability Report
FY2021-22 Strategic Plan:

These responses were submitted for the FY 2020-2021 Accountability Report by the
FORESTRY COMMISSION

Goal Enhance Public Benefits From Trees And Forests

Strategy 1.1

Statewide Enterprise Objective

Promote programs and practices that safeguard South Carolina's water, air, soil, wildlife habitat, recreation and natural beauty.

Public Infrastructure and Economic Development

Measure Number	Description	Base	Target	Actual	Value Type	Desired Outcome	Time Applicable	Calculation Method	Data Source	Data Location	Primary Stakeholder	Stakeholder Need Satisfied	State Funded Program Number Responsible	Notes
1.1.1	Forest ecosystem benefits index	6.54	6.15		Rank	equal to or greater than	State Fiscal Year (July 1 - June 30).	This index rank is calculated as a weighted composite score with a minimum value of 1 and a maximum value of 10 incorporating the following metrics: Percent BMP compliance rate from Courtesy Exams; percent BMP compliance rate from BMP Monitoring; number of BMP Courtesy Exam and BMP monitoring site visits; contact hours of BMP/TOP programs delivered; number of active ecosystem service projects	Agency records	These data are stored on BMP Program Manager computers.	The primary stakeholders are downstream water intakes and recreational water users.	Water quality is adequately protected for downstream water users when index score is high.	0505.010000.000	

Goal Enhance Public Benefits From Trees And Forests														
Strategy 1.2										Statewide Enterprise Objective				
Deliver programs and services that retain, develop and expand sustainable timber and non-timber markets										Public Infrastructure and Economic Development				
Measure Number	Description	Base	Target	Actual	Value Type	Desired Outcome	Time Applicable	Calculation Method	Data Source	Data Location	Primary Stakeholder	Stakeholder Need Satisfied	State Funded Program Number Responsible	Notes
1.2.1	Announced capital investment in forestry (millions \$)	\$571.40	\$250.00		Dollar Amount	equal to or greater than	State Fiscal Year (July 1 - June 30).	Sum of \$ capital investment announced	SC Forestry Commission (SCFC) and SC Department of Commerce (SCDOC) Records	These data are stored on Resource Development Division computers.	All forest landowners benefit from additional markets.	Forest landowners benefit from the announcement of new forest product markets as there is more demand for their wood.	0505.010000.000	
1.2.1	Forest markets development index	5.21	5		Rank	equal to or greater than	State Fiscal Year (July 1 - June 30).	This index rank is calculated as a weighted composite score with a minimum value of 1 and a maximum value of 10 incorporating the following metrics: Number of agency-led trade events; number of active economic development projects; number of business assists; number of market-related publications; and percent of TPO surveys completed	Agency records	These data are housed on Resource Development program computers.	Forest industry.	Retaining and growing markets for forest products	0505.010000.000	
1.2.2	Announced new job creation in forestry	446	250		Count	equal to or greater than	State Fiscal Year (July 1 - June 30).	Sum of # new jobs announced	SCFC and SCDOC Records	These data are stored on Resource Development Division computers.	The South Carolina workforce, including loggers.	The South Carolina workforce benefits when forest product announcements create jobs.	0505.010000.000	
1.2.3	Industry Timber Production and Consumption (thousand cubic feet)	819861	800000		Count	equal to or greater than	Calendar Year (January 1 - December 31)	Data derived from TPO survey	US Forest Service Timber Products Output (TPO) Program	The individual mill data resides on SCFC and USDA FIA computers.	Forest industry.	Forest industry is the primary user of TPO data to gauge the health and sustainability of the industry.	0505.010000.000	

Goal Enhance Public Benefits From Trees And Forests														
Strategy 1.3										Statewide Enterprise Objective				
Engage communities to grow and sustain healthy trees and forests										Public Infrastructure and Economic Development				
Measure Number	Description	Base	Target	Actual	Value Type	Desired Outcome	Time Applicable	Calculation Method	Data Source	Data Location	Primary Stakeholder	Stakeholder Need Satisfied	State Funded Program Number Responsible	Notes
1.3.1	Community Forestry Index	4.27	4		Rank	equal to or greater than	State Fiscal Year (July 1 - June 30).	This index rank is calculated as a weighted composite score with a minimum value of 1 and a maximum value of 10 incorporating the following metrics: Number of people served; number of annual Tree City USA designations; contact hours delivered on urban forestry topics; contact hours delivered specific to community and county planning	Agency records	Federal CARS database, Urban Forestry Coordinator's records, Arbor Day Foundation	Urban and suburban residents	Ecosystem benefits of trees	0505.010000.000	

Goal Enhance Public Benefits From Trees And Forests														
Strategy 1.4										Statewide Enterprise Objective				
Engage in tree improvement to improve the health and productive capacity of our forests										Public Infrastructure and Economic Development				
Measure Number	Description	Base	Target	Actual	Value Type	Desired Outcome	Time Applicable	Calculation Method	Data Source	Data Location	Primary Stakeholder	Stakeholder Need Satisfied	State Funded Program Number Responsible	Notes
1.4.1	Nursery & Tree Improvement Index	6.22		4	Rank	equal to or greater than	State Fiscal Year (July 1 - June 30).	This index rank is calculated as a weighted composite score with a minimum value of 1 and a maximum value of 10 incorporating the following metrics: Nursery and Tree Improvement total revenue; bushels of improved cones harvested; percent of seedling quota sold annually; PRS composite score of seed sold; number of active progeny tests	Agency records	These data are stored on N&TI Program Manager computers.	Forest landowners in SC.	High quality seedlings are available to SC landowners at competitive prices.	0505.010000.000	

Goal Protect Forests From Harm														
Strategy 2.1										Statewide Enterprise Objective				
Ensure prompt and effective response to wildfires and other disasters in an increasingly complex environment										Maintaining Safety, Integrity and Security				
Measure Number	Description	Base	Target	Actual	Value Type	Desired Outcome	Time Applicable	Calculation Method	Data Source	Data Location	Primary Stakeholder	Stakeholder Need Satisfied	State Funded Program Number Responsible	Notes
2.1.1	Average Wildfire Response Time (minutes)	37.21	≥38		Acceptable Range	equal to or less than	State Fiscal Year (July 1 - June 30).	Time between initial report of wildfire and arrival of first firefighting unit	Agency Dispatch Records	Logisys FirstCall Computer-Aided Dispatch System (CADS), accessed by agency dispatch personnel, communication technicians and fire staff	General public	Public safety	0505.010000.000	
2.1.2	Frontline Firefighting Dozers with enclosed cabs	71%	80%		Percent	equal to or greater than	State Fiscal Year (July 1 - June 30).	Number of enclosed cabs divided by desired frontline fleet	Agency fleet records	Fleet360 Access database maintained and accessed in-house by the agency fleet manager.	General public, dozer operators	Safety	0505.010000.000	
2.1.3	Frontline Firefighting Dozers within 15- year service life	79%	84%		Percent	equal to or greater than	State Fiscal Year (July 1 - June 30).	Number of bulldozers within 15-year service life divided by desired frontline fleet	Agency fleet records	Fleet360 Access database maintained and accessed in-house by the agency fleet manager.	General public, dozer operators	Safety	0505.010000.000	

Goal Protect Forests From Harm														
Strategy 2.2										Statewide Enterprise Objective				
Develop and deliver innovative prevention programs that reduce wildfire risks to forests and communities										Maintaining Safety, Integrity and Security				
Measure Number	Description	Base	Target	Actual	Value Type	Desired Outcome	Time Applicable	Calculation Method	Data Source	Data Location	Primary Stakeholder	Stakeholder Need Satisfied	State Funded Budget Program Number Responsible	Notes
2.2.1	Wildfire Prevention Index	4.78	4		Rank	equal to or less than	State Fiscal Year (July 1 - June 30).	This index rank is calculated as a weighted composite score with a minimum value of 1 and a maximum value of 10 incorporating the following metrics: acres of fuel mitigation treatments implemented by SCFC; number of new wildfire risk assessments completed for communities; ratio of prevention efforts to the number of wildfire causes 4 and 5 (escaped debris burns and arsons, respectively); and acres covered by Community Wildfire Protection Plans to improve wildfire risk	Agency records	These data are stored in a combination of places, including in Access databases on individual program managers' computers, the Southern Wildfire Risk Assessment (SouthWRAP) web application, and through the online geographic information system services provided by ArcGIS.	General public	Safety	0505.010000.000	

Goal: Conserve Working Forests														
Strategy: 3.1										Statewide Enterprise Objective				
Support landowners with programs and services that promote active forest management and help them meet their goals										Government and Citizens				
Measure Number	Description	Base	Target	Actual	Value Type	Desired Outcome	Time Applicable	Calculation Method	Data Source	Data Location	Primary Stakeholder	Stakeholder Need Satisfied	State Funded Budget Program Number Responsible	Notes
3.1.1	Number of Landowners Assisted	2201	2200		Count	equal to or greater than	State Fiscal Year (July 1 - June 30).	Total number of forest landowners who receive assistance documented by a case file or other written record. A landowner is to be recorded only once during a fiscal year regardless of the number of times assisted.	SCFC 3209-1 Database	This data is stored on the SCFC server. The data is recorded by Project Foresters and entered into the database by regional staff.	Forest landowners	Forest landowners need the assistance that is provided in order to make informed decisions regarding the management of their forestland.	0505.010000.000	
3.1.2	Forest management assistance customer satisfaction level	93%	95%		Percent	equal to or greater than	State Fiscal Year (July 1 - June 30).	Averaging of all survey responses from recipients of RFA and Stewardship plans, forestry services, and cost-share assistance	SCFC Survey	The Forest Management Section of SCFC calculates this data and houses it	Forest landowners	This measure describes how well the agency is meeting the needs of one of its key customers.	0505.010000.000	
3.1.3	Landowner Assistance Index	5.53	4		Rank	equal to or greater than	State Fiscal Year (July 1 - June 30).	This index rank is calculated as a weighted composite score with a minimum value of 1 and a maximum value of 10 incorporating the following metrics: Number of new or revised Forest Stewardship Plans in priority areas; percent of acres of Forest Stewardship Plans in priority areas; percent implementation of Stewardship plans; number of non-cost-share plans; number of cost-share plans, oldest FRP application (in days); and average time between FRP funding and completion	Agency records	The Forest Management Section of SCFC calculates this data and houses it	Forest landowners	Forest landowners need the assistance that is provided in order to make informed decisions regarding the management of their forestland.	0505.010000.000	

Goal		Conserve Working Forests												
Strategy		3.2											Statewide Enterprise Objective	
		Promote and increase the responsible use of prescribed fire											Government and Citizens	
Measure Number	Description	Base	Target	Actual	Value Type	Desired Outcome	Time Applicable	Calculation Method	Data Source	Data Location	Primary Stakeholder	Stakeholder Need Satisfied	State Funded Budget Program Number Responsible	Notes
3.2.1	Prescribed Fire Effort Index	4.19		4	Rank	equal to or greater than	State Fiscal Year (July 1 - June 30).	This index rank is calculated as a weighted composite score with a minimum value of 1 and a maximum value of 10 incorporating the following metrics: Total acres prescribed burned by all sources; percent of prescribed burns acres conducted by Certified Prescribed Fire Managers (CPFM); acres prescribed burned by SCFC under service contracts; acres prescribed burned on State Forests; percent of SCFC prescribed burn contract acres completed; acres of standby service delivered; contact hours of CPFM training provided	Agency records	SCFC Dispatch Database	General public	Reduced risk of wildfire	0505.010000.000	

Goal: Conserve Working Forests														
Strategy: 3.3										Statewide Enterprise Objective				
Demonstrate practices for the active, sustainable, multiple-use management of State Forests, and engage other public land owners to do the same										Government and Citizens				
Measure Number	Description	Base	Target	Actual	Value Type	Desired Outcome	Time Applicable	Calculation Method	Data Source	Data Location	Primary Stakeholder	Stakeholder Need Satisfied	State Funded Budget Program Number Responsible	Notes
3.3.1	Public Lands Management Index	8.53		4	Rank	equal to or greater than	State Fiscal Year (July 1 - June 30).	This index rank is calculated as a weighted composite score with a minimum value of 1 and a maximum value of 10 incorporating the following metrics: net annual carryover; net cumulative carryover; percent of harvested acres goal attained; acres of pine straw sold; percent of threatened & endangered active red-cockaded woodpecker clusters growth attained; community involvement and landowner outreach (research and landowner demonstration); and other public lands consultation response	Agency records	State Lands Program Manager compiles this data and houses it	General public	The need for active forest management on public lands to produce the full suite of benefits of forestry: economic, social and environmental.	1010.000000.000	

Goal Conserve Working Forests														
Strategy 3.4										Statewide Enterprise Objective				
Actively seek opportunities to acquire land to grow the State Forest system										Government and Citizens				
Measure Number	Description	Base	Target	Actual	Value Type	Desired Outcome	Time Applicable	Calculation Method	Data Source	Data Location	Primary Stakeholder	Stakeholder Need Satisfied	State Funded Budget Program Number Responsible	Notes
3.4.1	Number of land acquisition projects evaluated	3		1	Count (whole number)	equal to or greater than	State Fiscal Year (July 1 - June 30).	Sum of active land acquisition projects evaluated	Agency records	State Lands Program Manager compiles this data and houses it	General public	The need to add land to the State Forest system to realize the full suite of benefits of forestry: economic, social and environmental.	1010.000000.001	

Goal: Raise Awareness About Our Forests														
Strategy: 4.1										Statewide Enterprise Objective				
Promote the Forestry Commission as South Carolina's first and foremost source for forest management information and assistance										Education, Training, and Human Development				
Measure Number	Description	Base	Target	Actual	Value Type	Desired Outcome	Time Applicable	Calculation Method	Data Source	Data Location	Primary Stakeholder	Stakeholder Need Satisfied	State Funded Budget Program Number Responsible	Notes
4.1.1	Outreach Effort Index	6.28		4	Rank	equal to or greater than	State Fiscal Year (July 1 - June 30).	This index rank is calculated as a weighted composite score with a minimum value of 1 and a maximum value of 10 incorporating the following metrics: Number of PLT program participants reached through workshops; number of non-PLT forestry/conservation program participants reached by SCFC; number of publications produced; number of internal communication assists; number of external communication assists	Agency records	The component data for this index are stored in a variety of places, including on individual program managers' computers and in shared resources like Google Sheets/Docs	General public	Awareness of forestry-related information and educational resources	1511.000000.000	
4.1.2	Social Media Analytics Index	4.37		4	Rank	equal to or greater than	State Fiscal Year (July 1 - June 30).	This index rank is calculated as a weighted composite score with a minimum value of 1 and a maximum value of 10 incorporating the following metrics: FACEBOOK – number of posts, follows, average daily reach, engagement rate, messenger response rate TWITTER – posts, engagements, follows, impressions YOUTUBE – subscribers, number of new videos, views, likes	Social media statistics	The component data for this index are stored in the respective reporting sections of the three social media platforms listed.	General public	Awareness of forestry-related information and educational resources	1511.000000.000	

Goal: Raise Awareness About Our Forests														
Strategy: 4.2										Statewide Enterprise Objective				
Educate the public on the environmental benefits of working forests and the role of strong markets and family forest owners in keeping our forests healthy										Education, Training, and Human Development				
Measure Number	Description	Base	Target	Actual	Value Type	Desired Outcome	Time Applicable	Calculation Method	Data Source	Data Location	Primary Stakeholder	Stakeholder Need Satisfied	State Funded Budget Program Number Responsible	Notes
4.2.1	Number of active certified PLT facilitators	47	40		Count (whole number)	equal to or greater than	State Fiscal Year (July 1 - June 30).	Total active, certified Project Learning Tree facilitators in network	Agency records	These data are stored in an Excel file on the computer of the agency's Environmental Education Coordinator.	School-age children who are exposed to Project Learning Tree curriculum by their teachers who are PLT-certified	Awareness of forestry-related information and educational resources	1511.000000.000	

Goal: Raise Awareness About Our Forests														
Strategy: 4.2										Statewide Enterprise Objective				
Educate the public on the environmental benefits of working forests and the role of strong markets and family forest owners in keeping our forests healthy										Education, Training, and Human Development				
Measure Number	Description	Base	Target	Actual	Value Type	Desired Outcome	Time Applicable	Calculation Method	Data Source	Data Location	Primary Stakeholder	Stakeholder Need Satisfied	State Funded Budget Program Number Responsible	Notes
4.2.1	Number of active certified PLT facilitators		47	40	Count (whole number)	equal to or greater than	State Fiscal Year (July 1 - June 30).	Total active, certified Project Learning Tree facilitators in network	Agency records	These data are stored in an Excel file on the computer of the agency's Environmental Education Coordinator.	School-age children who are exposed to Project Learning Tree curriculum by their teachers who are PLT-certified	Awareness of forestry-related information and educational resources	1511.000000.000	

Goal: Strengthen The Commission For The Future														
Strategy: 5.1										Statewide Enterprise Objective				
Prioritize safety across all agency operations										Education, Training, and Human Development				
Measure Number	Description	Base	Target	Actual	Value Type	Desired Outcome	Time Applicable	Calculation Method	Data Source	Data Location	Primary Stakeholder	Stakeholder Need Satisfied	State Funded Budget Program Number Responsible	Notes
5.1.1	Lost- time incidents that resulted in day(s) away from work		1	1	Count (whole number)	equal to or less than	State Fiscal Year (July 1 - June 30).	Secondary reporting from predetermined calculations	Claims Activity Report & Accord Form, Daily	This data is stored in SCEIS and accessed when necessary by appropriate Human Resources agency personnel.	Agency employees, general public	Employee safety	0100.000000.000	
5.1.2	Work-related accidents/injuries		5	4	Count (whole number)	equal to or less than	State Fiscal Year (July 1 - June 30).	Reported number of incidents	Claims Activity Report & OSHA Form 300, SCEIS leave records, Daily	This data is stored in SCEIS, agency records and is accessed when necessary by appropriate Human Resources agency personnel.	Agency employees	Safety	0100.000000.000	

Goal	Strengthen The Commission For The Future														
Strategy	5.2											Statewide Enterprise Objective			

Develop and maintain a workforce that is inclusive, skilled, engaged and productive Education, Training, and Human Development

Measure Number	Description	Base	Target	Actual	Value Type	Desired Outcome	Time Applicable	Calculation Method	Data Source	Data Location	Primary Stakeholder	Stakeholder Need Satisfied	State Funded Budget Program Number Responsible	Notes
5.2.1	Employee Engagement Index	7.53	4		Rank	equal to or less than	State Fiscal Year (July 1 - June 30).	The index rank is calculated using a moving average of periodic employee engagement survey results keying on four indicators of employee engagement: employee pride in workplace, employee looks forward to work, employee willing to recommend working at the agency to friend, and employee belief that agency is a good place to work.	Employee engagement survey results and agency records	This data is stored on the computers of the contracted vendor and the State Forester.	General public and agency employees	An engaged, productive and efficient Forestry Commission workforce focused on protecting and serving the citizens of South Carolina.	0100.000000.000	

Goal		Strengthen The Commission For The Future													
Strategy		5.3												Statewide Enterprise Objective	
Measure		Closely monitor structure and staffing to ensure that the organization efficiently and effectively meets its mission as the future unfolds and conditions change												Education, Training, and Human Development	
Measure Number	Description	Base	Target	Actual	Value Type	Desired Outcome	Time Applicable	Calculation Method	Data Source	Data Location	Primary Stakeholder	Stakeholder Need Satisfied	State Funded Budget Program Number Responsible	Notes	
5.3.1	Turnover rate	9.2%	10.0%		Percent	equal to or less than	State Fiscal Year (July 1 - June 30).	Number of separations during a month divided by the average number of employees during that same time period, multiplied by 100.	PEBA database; SCEIS; personnel files	This data is stored in SCEIS, PEBA database and in agency records, and is accessed when necessary by appropriate Human Resources agency personnel.	Agency employees	Productivity, efficiency	0100.000000.000		

FY 2020-2021 Agency Accountability Report

Budget Responses:

These responses were submitted for the FY 2020-2021 Accountability Report by the

FORESTRY COMMISSION

			FY 2020-21 Expenditures (Actual)				FY 2021-22 Expenditures (Projected)			
State Funded Program Number	State Funded Program Title	Description of State Funded Program	General	Other	Federal	TOTAL	General	Other	Federal	TOTAL
0100.000000.000	Administration	Administration	\$877,585.00			\$877,585.00	\$925,797.00			\$925,797.00
0501.200000X000	Forest Renewal Program	Forest Renewal Program	\$200,000.00	\$817,175.00		\$1,017,175.00	\$200,000.00	\$800,000.00		\$1,000,000.00
0505.010000.000	Forest Protection and Development	Forest Protection and Development	\$14,761,377.00	\$3,000,212.00	\$3,161,766.00	\$20,923,355.00	\$15,565,783.00	\$7,096,000.00	\$4,328,560.00	\$26,990,343.00
1010.000000.000	State Forests	State Forests	\$50,486.00	\$2,560,876.00		\$2,611,362.00	\$100,000.00	\$3,272,713.00		\$3,372,713.00
1511.000000.000	Education	Education	\$352,448.00	\$4,478.00		\$356,926.00	\$228,725.00			\$228,725.00
9500.050000.000	State Employer Contributions	State Employer Contributions	\$5,759,629.00	\$468,858.00	\$342,183.00	\$6,570,670.00	\$6,544,287.00	\$510,000.00	\$435,000.00	\$7,489,287.00
9801.050000.000	Operating Expenses	Operating Expenses		\$15,934.00		\$15,934.00				

FY 2020-2021 Agency Accountability Report

Legal Responses:

These responses were submitted for the FY 2020-2021 Accountability Report by the
FORESTRY COMMISSION

Description	Purpose	Law Number	Jurisdiction	Type	Notes
Primary federal law governing water pollution. Administered in SC by DHEC, this law governs forest management activities in wetlands, road construction, and impacts to water quality. The SC Forestry Commission administers South Carolina's Best Management Practices for Forestry through an MOU with SCDHEC.	Requires a service	33 U.S.C. Section 1251-1387: Clean Water Act	Federal	Statute	Primary federal law governing water pollution. Administered in SC by DHEC, this law governs forest management activities in wetlands, road construction, and impacts to water quality. The SC Forestry Commission administers South Carolina's Best Management Practices for Forestry through an MOU with SCDHEC.
Allows the Federal Government to provide assistance to state government to relieve hardship and damage that occur from disasters. Provides access to grants and severity funds after disasters.	Requires a service	42 U.S.C. Section 5191: Stafford Disaster Relief and Emergency Assistance Act	Federal	Statute	Allows the Federal Government to provide assistance to state government to relieve hardship and damage that occur from disasters. Provides access to grants and severity funds after disasters.
Designed to control air pollution on a national level. Administered in SC by DHEC, this law impacts wildfire suppression, prescribed burning, and forest management. The SC Forestry Commission and DHEC jointly administer South Carolina's Smoke Management Guidelines.	Requires a service	42 U.S.C. Section Chapter 85, Section 7401: Clean Air Act	Federal	Statute	
Establishes the terms of office of the members of the commission.	Not related to agency deliverable	48-23-20	State	Statute	
Establishes the process for selecting a chairman and defines the chair's roles and responsibilities.	Not related to agency deliverable	48-23-30	State	Statute	
Establishes the authority to pay commissioners' expenses while acting on behalf of commission.	Not related to agency deliverable	48-23-40	State	Statute	
Establishes the appointment, qualifications and duties of the State Forester.	Not related to agency deliverable	48-23-50	State	Statute	
Establishes that the State Forester is the secretary to the commission.	Not related to agency deliverable	48-23-60	State	Statute	
Establishes the general powers of the commission.	Not related to agency deliverable	48-23-80	State	Statute	
Establishes the power of the commission to negotiate agreements with federal agencies for certain services on federal lands.	Not related to agency deliverable	48-23-85	State	Statute	
Establishes the duties of State Forester and Forestry Commission with respect to forest disasters; development of Forest Disaster Plan.	Requires a service	48-23-86	State	Statute	The Forestry Commission shall also assist other state agencies, utility companies and cooperatives, in the clearing of transportation routes, and power and communication lines.
Establishes the appointment of officers to carry out law enforcement responsibilities of commission; terms; removal.	Not related to agency deliverable	48-23-96	State	Statute	H.3541, passed during FY21, provides SCFC officers the authority to issue warning tickets.
Establishes that wood load tickets are required for certain ticket sales; exceptions; penalties	Not related to agency deliverable	48-23-97	State	Statute	
Establishes the Forest Renewal Fund.	Requires a service	48-28-100	State	Statute	There is created in the Commission the forest renewal fund for which fiscal management and responsibility is vested in the State Forester.

**These responses were submitted for the FY 2020-2021 Accountability Report by the
FORESTRY COMMISSION**

Description	Purpose	Law Number	Jurisdiction	Type	Notes
Establishes the powers and duties of the State Forester in connection with implementation of forest renewal program.	Requires a service	48-28-20	State	Statute	The State Forester shall implement a forest renewal program to encourage private investments in the improved management of forest lands and resources within the State to ensure adequate future high quality timber supplies, related employment and other economic benefits and the protection, maintenance and enhancement of a productive and stable forest resource system.
Definitions of terms related to cost-sharing practices and procedures.	Not related to agency deliverable	48-28-30	State	Statute	
Promulgation of rules and regulations; employment and compensation of support personnel; purchase and use of equipment.	Not related to agency deliverable	48-28-40	State	Statute	
Establishes the powers and duties of the State Forester in connection with administration of cost-sharing provisions.	Not related to agency deliverable	48-28-50	State	Statute	
Establishes rate of cost-sharing payments; maximum payments to eligible landowners; exclusion of land for which federal cost-sharing payments are received.	Not related to agency deliverable	48-28-60	State	Statute	
No limitation on woodland acreage of eligible landowner.	Not related to agency deliverable	48-28-70	State	Statute	
Landowners required to submit forest management plan and maintain land in forest condition.	Not related to agency deliverable	48-28-80	State	Statute	
Governmental agencies ineligible for forest renewal payments.	Not related to agency deliverable	48-28-90	State	Statute	
Creates an assessment on primary forest products processed from South Carolina timber to provide a source of funds to finance the operations provided for in Chapter 18	Not related to agency deliverable	48-30-20	State	Statute	
Provides definitions for the Primary Forest Product Assessment Law.	Not related to agency deliverable	48-30-30	State	Statute	
Defines assessment on primary forest products; conditions for suspension of assessment.	Not related to agency deliverable	48-30-40	State	Statute	
Provides for collection of assessment by Department of Revenue; information and assistance to be provided by State Forester; reimbursement of department for collection costs.	Not related to agency deliverable	48-30-50	State	Statute	
Establishes assessment rates.	Not related to agency deliverable	48-30-60	State	Statute	
Establishes time and manner of payment of assessments; processors to maintain production records for assessment purposes; confidentiality of records.	Not related to agency deliverable	48-30-70	State	Statute	
Establishes for the enforcement of primary forest product assessment.	Not related to agency deliverable	48-30-80	State	Statute	
Defines "forest land."	Not related to agency deliverable	48-33-20	State	Statute	
Defines "forest fire."	Not related to agency deliverable	48-33-30	State	Statute	
Authorizes the State Commission of Forestry to direct forest fire protection work.	Requires a service	48-33-40	State	Statute	All forest fire protection work shall be under the direction and supervision of the State Commission of Forestry, through the State Forester, subject to the provisions of this chapter and the laws of the State enacted relative to forestry and forest fire prevention and suppression.

**These responses were submitted for the FY 2020-2021 Accountability Report by the
FORESTRY COMMISSION**

Description	Purpose	Law Number	Jurisdiction	Type	Notes
Establishes the creation of county forestry boards.	Not related to agency deliverable	48-33-50	State	Statute	
Establishes duties and powers of county forestry boards; employees.	Not related to agency deliverable	48-33-60	State	Statute	
Establishes plans for forest fire protection; rules and regulations for administration of plans.	Requires a service	48-33-70	State	Statute	The State Commission of Forestry shall prepare for each county forestry board a plan for forest fire protection for the fiscal year and present such plan at the July meeting of the board. It shall have power to make and enforce all rules and regulations necessary for the administration of forest fire protection.
Authorizes access to property by authorized agency personnel and county forestry board members	Not related to agency deliverable	48-33-80	State	Statute	
Establishes title to property acquired vested in State Commission of Forestry.	Not related to agency deliverable	48-33-90	State	Statute	
Establishes definitions for the South Carolina Prescribed Fire Act.	Not related to agency deliverable	48-34-20	State	Statute	
Establishes authority to promulgate regulations.	Requires a service	48-34-30	State	Statute	The State Commission of Forestry shall promulgate regulations for the use of prescribed fire and for the certification of prescribed fire managers.
Establishes requirements for conducting prescribed fire; South Carolina Smoke Management Guidelines.	Not related to agency deliverable	48-34-40	State	Statute	
Addresses liability for damages, injury, or loss caused by prescribed fire.	Not related to agency deliverable	48-34-50	State	Statute	
Establishes that a person may conduct a prescribed fire without a certified prescribed fire manager present.	Not related to agency deliverable	48-34-60	State	Statute	
Establishes that authorization must be obtained from landowner to conduct burning.	Not related to agency deliverable	48-35-20	State	Statute	
Establishes that this chapter is inapplicable to fires within municipalities.	Not related to agency deliverable	48-35-30	State	Statute	
Establishes that a person may conduct a prescribed fire without a certified prescribed fire manager present.	Not related to agency deliverable	48-35-40	State	Statute	
Establishes that the State Forester may prohibit fires.	Requires a service	48-35-50	State	Statute	The State Forester may direct at any time, when deemed necessary in the interest of public safety, that fires covered by this chapter not be started.
Exempts portable outdoor fireplaces and permanently constructed fire pits from requirements of this chapter.	Not related to agency deliverable	48-35-55	State	Statute	
Defines penalties for violating provisions of this chapter.	Not related to agency deliverable	48-35-60	State	Statute	
Establishes definitions for the South Carolina Forest Best Management Practices Act.	Not related to agency deliverable	48-36-20	State	Statute	
Establishes that the State Commission of Forestry is the designated agency in South Carolina to provide public oversight and guidance for technical forest management practices and related activities in laws pertaining to forest lands.	Requires a service	48-36-30	State	Statute	The commission shall establish Best Management Practices, related monitoring programs, and other programs to assure that forestry practices are in compliance with state and federal regulations.
Establishes terms of the Southeastern Interstate Forest Fire Protection Compact.	Not related to agency deliverable	48-37-20	State	Statute	

**These responses were submitted for the FY 2020-2021 Accountability Report by the
FORESTRY COMMISSION**

Description	Purpose	Law Number	Jurisdiction	Type	Notes
Establishes the effective date of the Southeastern Interstate Forest Fire Protection Compact.	Not related to agency deliverable	48-37-30	State	Statute	
Establishes that the State Forester acts as compact administrator; advisory committee of Southeastern Interstate Forest Fire Protection Compact.	Requires a service	48-37-40	State	Statute	State Forester to act as compact administrator; advisory committee of Southeastern Interstate Forest Fire Protection Compact.
Establishes the powers and duties of State Forester and advisory committee as part of the compact.	Requires a service	48-37-50	State	Statute	There is hereby granted to the State Forester ... all the powers provided for in the compact and all the powers necessary or incidental to the carrying out of such compact in every particular.
Establishes that this chapter does not limit the powers of the State Commission of Forestry.	Not related to agency deliverable	48-37-60	State	Statute	
Designed to protect species from extinction. Requires the SC Forestry Commission to manage for threatened & endangered species on state forests.	Requires a service	7 U.S.C. Section 136: Endangered Species Act	Federal	Statute	Designed to protect species from extinction. Requires the SC Forestry Commission to manage for threatened & endangered species on state forests.
Implementation of cost share. Eligibility of landowners.	Requires a service	Chapter 28: The Forest Renewal Program Section 48-28-10	State	Statute	Implementation of cost share. Eligibility of landowners.
Describes how funds will be collected for Forest Renewal Program.	Not related to agency deliverable	Chapter 30: Primary Forest Product Assessment Section 48-30-10	State	Statute	Describes how funds will be collected for Forest Renewal Program.
Definitions of forest land/forest fire. The SC Forestry Commission shall direct forest fire protection work. County forestry boards: terms and duties.	Requires a service	Chapter 33: Forest Fire Protection Act Section 48-33-10	State	Statute	Definitions of forest land/forest fire. The SC Forestry Commission shall direct forest fire protection work. County forestry boards: terms and duties.
Establishes requirements for conducting prescribed fires. Established Certified Prescribed Fire Manager course and provides limited liability protection to certified burners. Defines prescribed fire and clarifies the role of the certified burner.	Requires a service	Chapter 34: Prescribed Fire Act Section 48-34-10	State	Statute	Establishes requirements for conducting prescribed fires. Established Certified Prescribed Fire Manager course and provides limited liability protection to certified burners. Defines prescribed fire and clarifies the role of the certified burner.
Requires notification to the SC Forestry Commission and precautions before conducting outdoor burning. Establishes the ability for State Forester and the Governor to enact burning bans.	Requires a service	Chapter 35: Regulation of Fires on Certain Lands Section 48-35-10	State	Statute	Requires notification to the SC Forestry Commission and precautions before conducting outdoor burning. Establishes the ability for State Forester and the Governor to enact burning bans.
Sets guidelines for silvicultural activities to protect water quality, soil quality, and productivity, wildlife habitat, and the aesthetic integrity of the forest.	Requires a service	Chapter 36: Best Management Practices Act Section 48-36-10	State	Statute	Sets guidelines for silvicultural activities to protect water quality, soil quality, and productivity, wildlife habitat, and the aesthetic integrity of the forest.

**These responses were submitted for the FY 2020-2021 Accountability Report by the
FORESTRY COMMISSION**

Description	Purpose	Law Number	Jurisdiction	Type	Notes
Allows sharing of wildland firefighting resources between the 13 states in the Southern Region through mutual aid via the Southeastern Interstate Forest Fire Protection Compact.	Requires a service	Chapter 37: Southeastern Interstate Forest Fire Protection Compact Section 48-37-10	State	Statute	Allows sharing of wildland firefighting resources between the 13 states in the Southern Region through mutual aid via the Southeastern Interstate Forest Fire Protection Compact.
Authority of the United States Forest Service to provide financial and technical assistance to states and private landowners on a variety of forestry issues, including forest management and stewardship, fire protection, insect and disease control, reforestation and stand improvement, and urban forestry.	Requires a service	P.L. 95-313: Cooperative Forestry Assistance Act	Federal	Statute	Authority of the United States Forest Service to provide financial and technical assistance to states and private landowners on a variety of forestry issues, including forest management and stewardship, fire protection, insect and disease control, reforestation and stand improvement, and urban forestry.
Data Breach Notification - Requirements for state agencies.	Report our agency must/may provide	Proviso 117.103	State	Proviso	Data Breach Notification - Requirements for state agencies.
Information Technology and Information Security Plans	Report our agency must/may provide	Proviso 117.110	State	Proviso	Information Technology and Information Security Plans.
Statewide Strategic Information Technology Plan Implementation	Requires a manner of delivery	Proviso 117.117	State	FY 2019-20 Proviso	
Allowance for Residences & Compensation Restrictions - Authorizes residences for forestry aides and caretaker at central headquarters.	Requires a service	Proviso 117.15	State	Proviso	Allowance for Residences & Compensation Restrictions - Authorizes residences for forestry aides and caretaker at central headquarters.
Websites - Providing link on agency website to monthly state procurement card statements or report with same information.	Report our agency must/may provide	Proviso 117.83	State	Proviso	Websites - Providing link on agency website to monthly state procurement card statements or report with same information.
Grant Funds Carry Forward - Authorizes unexpended grant funds in the current year to pay for expenditures incurred in the prior year.	Requires a service	Proviso 43.1	State	Proviso	Grant Funds Carry Forward - Authorizes unexpended grant funds in the current year to pay for expenditures incurred in the prior year.
Retention of Emergency Expenditure Refunds - Authorizes agency to retain all funds received as reimbursement of expenditures from other state or federal agencies when personnel and equipment are mobilized due to an emergency.	Requires a service	Proviso 43.2	State	Proviso	
Commissioned Officers' Physicals - Authorizes the Commission to pay the cost of physical examinations for agency personnel who are required to receive such physical examinations prior to receiving a law enforcement commission.	Requires a service	Proviso 43.3	State	Proviso	Commissioned Officers' Physicals - Authorizes the Commission to pay the cost of physical examinations for agency personnel who are required to receive such physical examinations prior to receiving a law enforcement commission.
Compensatory Payment - Authorizes exempt employees of the agency may be paid for actual hours worked in lieu of compensatory time, at the discretion of the agency director, and providing funds are available.	Requires a service	Proviso 43.4	State	Proviso	Compensatory Payment - Authorizes exempt employees of the agency may be paid for actual hours worked in lieu of compensatory time, at the discretion of the agency director, and providing funds are available.
Funds Transfer by DNR to Forestry Commission - For the current fiscal year, the Department of Natural Resources shall transfer \$100,000 of the funds appropriated for operating expenses of Wildlife and Freshwater Fisheries (Wildlife Management Areas) to the Forestry Commission.	Funding agency deliverable(s)	Proviso 47.14	State	FY 2019-20 Proviso	

**These responses were submitted for the FY 2020-2021 Accountability Report by the
FORESTRY COMMISSION**

Description	Purpose	Law Number	Jurisdiction	Type	Notes
Wireless Communications Tower: Educational Television Commission is directed to coordinate tower and antenna operations within South Carolina state government.	Requires a service	Proviso 8.4	State	Proviso	(ETV: Wireless Communications Tower) Educational Television Commission is directed to coordinate tower and antenna operations within South Carolina state government
Sale of surplus real property - Authorizes SC Forestry Commission to retain the net proceeds from the sale of surplus land for use in firefighting operations and replacement of firefighting equipment.	Requires a service	Proviso 93.15	State	Proviso	Sale of surplus real property - Authorizes SC Forestry Commission to retain the net proceeds from the sale of surplus land for use in firefighting operations and replacement of firefighting equipment.
Cyber Security - Adoption and Implementation of cyber security policies, guidelines, and standards.	Requires a service	Proviso 93.16	State	Proviso	Cyber Security - Adoption and Implementation of cyber security policies, guidelines, and standards.
S.C. Freedom Of Information Act: public business be performed in an open and public manner so that citizens shall be advised of the performance of public officials and of the decisions that are reached in public activity and in the formulation of public policy.	Requires a service	Section 30.4.10-165	State	Statute	The availability and provision of the agency's public records to all requestors pursuant to the Freedom Of Information Act.
Defines the growth and sale of forest tree seedlings and transplants; restrictions; receipts to revolving fund; purchase for resale and revolving fund.	Requires a service	Section 48-23-100: Growing and selling forest tree seedlings and transplants	State	Statute	Defines the growth and sale of forest tree seedlings and transplants; restrictions; receipts to revolving fund; purchase for resale and revolving fund.
Acquisition of real estate for timber production and other purposes	Requires a service	Section 48-23-120	State	Statute	Acquisition of real estate for timber production and other purposes
Allows the agency to enter into agreements with federal or other agencies for the acquisition of lands.	Requires a service	Section 48-23-130: Acquisition by Commission of Lands for State Forests	State	Statute	Allows the agency to enter into agreements with federal or other agencies for the acquisition of lands.
25% of gross revenue earned from certain privileges on state forest land each year is provided to the counties in which revenue is earned to be spent for "general school purposes." H.3383 (2019) amended this section to exempt the proceeds from land rentals being included in the gross revenue calculations.	Distribute funding to another entity	Section 48-23-260: Counties containing State Forest Lands Shall Share in Revenues	State	Statute	25% of gross revenue earned from certain privileges on state forest land each year is provided to the counties in which revenue is earned to be spent for "general school purposes." H.3383 (2019) amended this section to exempt the proceeds from land rentals being included in the gross revenue calculations.
Defines timber theft and fraud.	Requires a service	Section 48-23-265: Defines Timber Theft and Fraud	State	Statute	Defines timber theft and fraud.
Scientific, technical, practical. Provides for assistance with afforestation, reforestation, maximum production of woodlands. Specialized equipment/operators or rental of same. Reasonable fees may be charged and receipts retained.	Requires a service	Section 48-23-295 Forestry Services to Landowners	State	Statute	Scientific, technical, practical. Provides for assistance with afforestation, reforestation, maximum production of woodlands. Specialized equipment/operators or rental of same. Reasonable fees may be charged and receipts retained.

**These responses were submitted for the FY 2020-2021 Accountability Report by the
FORESTRY COMMISSION**

Description	Purpose	Law Number	Jurisdiction	Type	Notes
Reports to the General Assembly on forest conditions. Prevent, control, and extinguish fires. Enforce forest laws. Advise and assist private land owners. Promote public appreciation of the advantages of forestry and the value of forests.	Report our agency must/may provide	Section 48-23-90: General duties of Commission	State	Statute	Prevent, control, and extinguish fires. Enforce forest laws. Advise and assist private land owners. Promote public appreciation of the advantages of forestry and the value of forests.
Establishes the SC Forestry Commission, terms of office, and qualifications of Commissioners, meetings, and reimbursement, qualifications/duties of State Forester.	Not related to agency deliverable	Sections 48-23-10	State	Statute	
Defines unlawful acts on State Forests. Authorizes the SC Forestry Commission to buy, sell, and rent property, cooperate with federal agencies in reforestation, negotiate agreements for fire suppression, develop forest disaster plans.	Requires a service	Sections 48-23-70	State	Statute	Authorizes the SC Forestry Commission to buy, sell, and rent property, cooperate with federal agencies in reforestation, negotiate agreements for fire suppression, develop forest disaster plans.
Defines forest law enforcement jurisdiction, responsibilities, and procedures.	Requires a service	Sections 48-23-95	State	Statute	Defines forest law enforcement jurisdiction, responsibilities, and procedures.

FY 2020-2021 Agency Accountability Report
Services Responses:

These responses were submitted for the FY 2020-2021 Accountability Report by the
FORESTRY COMMISSION

Description of Service	Description of Direct Customer	Customer Name	Others Impacted By the Service	Agency unit providing the service	Description of agency unit	Primary negative impact if service not provided
Human Resources, Procurement, Accounts Payable, Accounts Receivable, Finance	Executive Branch/State Agencies	Executive Branch/State Agencies	Vendors, Private Citizens	Administration	Provide administrative support, i.e. payroll, benefits, procurement, etc. to agency personnel (SC Code of Laws Title 48, Chapters 23 - 37).	The agency could not operate at sufficient capacity or effectiveness in the fulfillment of its mission.
Wildfire suppression, Fire Prevention, Control of forest pests, Damage Assessment, Incident Management, Water Quality Protection	Executive Branch/State Agencies	Executive Branch/State Agencies	Private citizens, forest landowners, residents in the wildland-urban interface; Legislative branch, Judicial branch; local governments; forest industry in SC	Forest Protection & Development	Protect forests from harm from wildfires, forest pests, and natural disasters. Maintain a productive forest land base, provide quality tree seedlings, and develop a strong forest industry. (SC Code of Laws Title 48, Chapters 23 - 37).	Privately owned forests would be more prone to damage from wildfire and pests and the economic impact of forestry would be reduced.
Forest Management Plans	All South Carolina citizens, with particular emphasis on landowners owning at least 10 acres of forest	General public, forest landowners	N/A	Forest Protection & Development	Protect forests from harm from wildfires, forest pests, and natural disasters. Maintain a productive forest land base, provide quality tree seedlings, and develop a strong forest industry. (SC Code of Laws Title 48, Chapters 23 - 37).	Privately owned forests would be more prone to damage from wildfire and pests and the economic impact of forestry would be reduced.
Forest Management and Timber Sale Assistance	All South Carolina citizens, with particular emphasis on landowners owning at least 10 acres of forest; forest industry	General public, forest landowners	N/A	Forest Protection & Development	Protect forests from harm from wildfires, forest pests, and natural disasters. Maintain a productive forest land base, provide quality tree seedlings, and develop a strong forest industry. (SC Code of Laws Title 48, Chapters 23 - 37).	Privately owned forests would be more prone to damage from wildfire and pests and the economic impact of forestry would be reduced.
Seedling sales	Forest landowners, Christmas tree growers	Forest landowners, Christmas tree growers	N/A	Forest Protection & Development	Protect forests from harm from wildfires, forest pests, and natural disasters. Maintain a productive forest land base, provide quality tree seedlings, and develop a strong forest industry. (SC Code of Laws Title 48, Chapters 23 - 37).	There could be a potential shortage of the best open-pollinated forest tree seedlings at competitive prices.
Seed Sales	Corporate nurseries: Weyerhaeuser, ArborGen, International Forest Seed, K&L Nursery	Corporate forest tree seedling nurseries	N/A	Forest Protection & Development	Protect forests from harm from wildfires, forest pests, and natural disasters. Maintain a productive forest land base, provide quality tree seedlings, and develop a strong forest industry. (SC Code of Laws Title 48, Chapters 23 - 37).	A lack of seed sale revenue could require funding by appropriated state funds for tree improvement.
Courtesy Best Management Practice (BMP) Exam	Forest landowners	Forest landowners	Loggers	Forest Protection & Development	Protect forests from harm from wildfires, forest pests, and natural disasters. Maintain a productive forest land base, provide quality tree seedlings, and develop a strong forest industry. (SC Code of Laws Title 48, Chapters 23 - 37).	The loss of the Courtesy Exam Program could result in increased water quality impact from forestry activities.

These responses were submitted for the FY 2020-2021 Accountability Report by the

FORESTRY COMMISSION

Description of Service	Description of Direct Customer	Customer Name	Others Impacted By the Service	Agency unit providing the service	Description of agency unit	Primary negative impact if service not provided
BMP Training	Timber operations professionals	Timber operations professionals	N/A	Forest Protection & Development	Protect forests from harm from wildfires, forest pests, and natural disasters. Maintain a productive forest land base, provide quality tree seedlings, and develop a strong forest industry. (SC Code of Laws Title 48, Chapters 23 - 37).	The loss of the TOP training program could result in increased water quality impact from forestry activities.
BMP Monitoring	Forest landowners	Forest landowners	Loggers	Forest Protection & Development	Protect forests from harm from wildfires, forest pests, and natural disasters. Maintain a productive forest land base, provide quality tree seedlings, and develop a strong forest industry. (SC Code of Laws Title 48, Chapters 23 - 37).	The loss of BMP Monitoring would result in a lack of awareness in the overall success of the BMP Program and opportunities for improvement.
Forest Inventory & Analysis (FIA) data	All primary forest industry processors	Forest industry	The forestry community	Forest Protection & Development	Protect forests from harm from wildfires, forest pests, and natural disasters. Maintain a productive forest land base, provide quality tree seedlings, and develop a strong forest industry. (SC Code of Laws Title 48, Chapters 23 - 37).	The FIA Program is the primary source of forest resource data. Loss of the program would result in data gaps in forest resource data.
Forest Product Market Reports & data	Primary and secondary forest product exporters	Forest product exporters	N/A	Forest Protection & Development	Protect forests from harm from wildfires, forest pests, and natural disasters. Maintain a productive forest land base, provide quality tree seedlings, and develop a strong forest industry. (SC Code of Laws Title 48, Chapters 23 - 37).	Lack of marketing data and reports would result in less awareness of export markets by SC forest industry.
FIA Woodbasket Analysis	New or existing primary forest product manufacturers	Forest industry	N/A	Forest Protection & Development	Protect forests from harm from wildfires, forest pests, and natural disasters. Maintain a productive forest land base, provide quality tree seedlings, and develop a strong forest industry. (SC Code of Laws Title 48, Chapters 23 - 37).	Loss of the ability to perform woodbasket analyses, would reduce economic activity through mill expansion in SC.
Economic Contribution of Forestry	All South Carolina citizens, with particular emphasis on forest landowners	All SC citizens	N/A	Forest Protection & Development	Protect forests from harm from wildfires, forest pests, and natural disasters. Maintain a productive forest land base, provide quality tree seedlings, and develop a strong forest industry. (SC Code of Laws Title 48, Chapters 23 - 37).	Loss of economic analyses for forestry would create data gaps in the contribution that forestry makes to SC's economy.
Forest-based recreation	Visitors to state forests	All SC citizens	N/A	State Forests	Manage state forests on a sustainable basis to provide multiple benefits and serve as a model for private forest landowners. (SC Code of Laws Title 48, Chapter 23).	Opportunities for outdoor recreation by the general public would be minimized.
Forest products	Forest products industry	Forest products industry	N/A	State Forests	Manage state forests on a sustainable basis to provide multiple benefits and serve as a model for private forest landowners. (SC Code of Laws Title 48, Chapter 23).	Loss of forest products data through TPO Program would result in less confidence of the sustainability of the resource.

These responses were submitted for the FY 2020-2021 Accountability Report by the

FORESTRY COMMISSION

Description of Service	Description of Direct Customer	Customer Name	Others Impacted By the Service	Agency unit providing the service	Description of agency unit	Primary negative impact if service not provided
25% of forest products sales revenue	School Districts	County school districts in which forests are located	N/A	State Forests	Manage state forests on a sustainable basis to provide multiple benefits and serve as a model for private forest landowners. (SC Code of Laws Title 48, Chapter 23).	School district funding would be reduced, possibly resulting in teacher layoffs.
Non-timber products (ecosystem services such as clean water)	All citizens	All citizens	Water utilities	State Forests	Manage state forests on a sustainable basis to provide multiple benefits and serve as a model for private forest landowners. (SC Code of Laws Title 48, Chapter 23).	Water utilities would incur higher costs which would be passed on to their customers.
Wood Magic Forest Fair	School children and other students make up the audience for the Wood Magic Forest Fair program.	School children/students	n/a	Education & Information	Increase the public's awareness of the benefits of sustainable forest management, the advantages of forestry, and the values of forests. (SC Code of Laws Title 48, Chapter 23).	Awareness of forestry's societal, economic and ecological impacts will not be realized by the general public.
Project Learning Tree (PLT)	Environmental education teachers make up the audience to which PLT information, lesson plans and other environmental education programs is distributed.	Environmental education teachers	n/a	Education & Information	Increase the public's awareness of the benefits of sustainable forest management, the advantages of forestry, and the values of forests. (SC Code of Laws Title 48, Chapter 23).	Awareness of forestry's societal, economic and ecological impacts will not be realized by the general public.
Forestry/environmental education programs	The audience for our general environmental education program is a wide one that includes the general public, students and teachers.	General public, students, teachers	n/a	Education & Information	Increase the public's awareness of the benefits of sustainable forest management, the advantages of forestry, and the values of forests. (SC Code of Laws Title 48, Chapter 23).	Awareness of forestry's societal, economic and ecological impacts will not be realized by the general public.
Information about forests, forest benefits, forest products, forest protection, forest management and practices, resource development and forest science	All South Carolina citizens, with particular emphasis on landowners owning at least 10 acres of forest, make up the audience to which forestry information is produced and promulgated by the Forestry Commission.	All South Carolina citizens, with particular emphasis on landowners owning at least 10 acres of forest	n/a	Education & Information	Increase the public's awareness of the benefits of sustainable forest management, the advantages of forestry, and the values of forests. (SC Code of Laws Title 48, Chapter 23).	Awareness of forestry's societal, economic and ecological impacts will not be realized by the general public.

Agency Partnerships Responses:

These responses were submitted for the FY 2020-2021 Accountability Report by the

FORESTRY COMMISSION

Name of Partner Entity	Type of Partner Entity	Description of Partnership
American Forest Foundation	Non-Governmental Organization	The American Forest Foundation works on-the-ground with family forest owners, partners and elected officials to promote stewardship and protect the nation's forest heritage.
ArborGen	Non-Governmental Organization	The SCFC and ArborGen have a 10-year agreement that allows ArborGen to manage and operate Taylor Nursery. The SCFC can designate the sales price for up to 5 million seedlings to be planted in South Carolina.
Association of Consulting Foresters	Professional Association	The SCFC assists this partner in setting up training and outreach programs for foresters.
Audubon South Carolina	Non-Governmental Organization	South Carolina chapter of the National Audubon Society that works to protect birds and their habitats using science, advocacy, education and on-the-ground conservation.
Board of Registered Foresters - LLR	State Government	SCFC partners with LLR and the Board of Registered Foresters in helping to ensure SCFC foresters hired achieve registration within two years of employment
Center For Heirs Property Preservation	Non-Governmental Organization	Non-profit that protects heirs' property and promotes its sustainable use to provide increased economic benefit to historically under-served families.
Clemson Extension Service - Forestry & Nat. Res. Extension	Higher Education Institute	SCFC cooperates with and coordinates forestry educational efforts with Forestry and Natural Resource Extension agents for timberland owners
Clemson University	State Government	The SC Forestry Commission has agreements with Clemson University for insect and disease control, landowner outreach, disaster response, guest lecturers, and wood use and design.
Councils of Government	Local Government	SCFC Urban & Community Forestry staff work with the local COGs to facilitate planning at the county level.
County and State Forestry Advisory Boards	State Government	County Forestry Boards (COBs) are legally constituted boards to serve in an advisory capacity to the SC Forestry Commission in all matters relative to the general forestry program in South Carolina. Provisions for establishment of these COBs are found in the 1976 Code of Laws of South Carolina, as amended, Title 48, Chapter 33, known as the "South Carolina Forest Fire Protection Act," which became law in April, 1945. The Forestry Commission looks upon COBs as representing the people of the county in all matters pertaining to forestry and through the State Advisory Committee of COBs they serve in an advisory capacity to the Forestry Commission in all phases of forestry, including forest fire control, forest management, reforestation, information and education, research, forest insect and disease control, etc.
Foresters Council	Professional Association	The Foresters Council of South Carolina provides an organized and representative group of technical foresters to initiate action and act in an advisory capacity in matters pertaining to the development of the forest resources, the welfare of forest landowners, and processors of forest products in the state.
Heritage Trust Advisory Board	State Government	An advisory board of the SC Dept. of Natural Resources, the Heritage Trust Advisory Board protects significant natural and cultural lands in South Carolina. The SC Forestry Commission partners with the Heritage Trust Advisory Board in making and evaluating recommendations regarding management criteria and allowable uses for natural areas and features.
International Society of Arboriculture	Non-Governmental Organization	The SCFC assists this partner in setting up training and outreach programs with regard to standards for arborists.
Longleaf Alliance	Non-Governmental Organization	SCFC partners with the Longleaf Alliance to promote restoration of longleaf pine across its range in South Carolina. LLA provides training for SCFC foresters and partners with SCFC on landowner outreach.
National Association of State Foresters	Professional Association	The National Association of State Foresters is a non-profit organization composed of the directors of forestry agencies in the states, territories and the District of Columbia of the United States. The SC Forestry Commission partners with NASF, along with its counterpart state agencies, to serve as the primary delivery system for national-scale forestry-related initiatives and activities.
National Deer Association (NDA)	Non-Governmental Organization	The SCFC partners with NDA to provide hunting opportunities to special groups(i.e. active and retired military). NDA is also a key partner in disseminating information on forestry and conservation.
National Park Service	Federal Government	The SCFC and USFS cooperate on wildfire suppression, fire prevention, federal excess equipment, and training through a Cooperative Agreement.
National Wild Turkey Federation	Non-Governmental Organization	SC Forestry Commission works with NWTF on landowner outreach and various forestry issues. SCFC also partners with NWTF on nursery and tree improvement projects.
Open Space Institute (OSI)	Non-Governmental Organization	The SCFC and OSI cooperate on conservation issues relating to policies and land acquisitions.
SC Association of Conservation Districts	Non-Governmental Organization	The SCFC receives advice from the SC Association of Conservation Districts on the Forest Stewardship Program and conservation issues.
SC Biomass Council	Non-Governmental Organization	The SC Forestry Commission maintains a membership in the SC Biomass Council and has provided leadership in raising awareness about the availability and benefits of biomass energy.
SC Chamber of Commerce	Non-Governmental Organization	SCFC is a member of the SC Chamber of Commerce whose mission is to advocate for business interests in the state and promote economic development. The SCFC represents the forestry community of landowners, forestry professionals and manufacturers.
SC Christmas Tree Grower's Association	Professional Association	The SC Forestry Commission's Nursery & Tree Improvement Program produces seedlings for the Christmas Tree growers in South Carolina.
SC Department of Agriculture	State Government	Agribusiness projects; outreach to farmers through landowner programs
SC Department of Commerce	State Government	The SC Forestry Commission has an MOU with the SC Department of Commerce to work together to grow the impact of forestry to the state's economy.
SC Department of Health and Environmental Control	State Government	Memorandum of Understandings in place related to air quality (prescribed fire and smoke management) and related to water quality (Forestry Best Management Practices).

These responses were submitted for the FY 2020-2021 Accountability Report by the

FORESTRY COMMISSION

Name of Partner Entity	Type of Partner Entity	Description of Partnership
SC Department of Natural Resources	State Government	SC Forestry Commission provides forest management assistance to the SC DNR including timber sale assistance, prescribed burning, and firebreak plowing. The agencies also have an agreement regarding Wildlife Management Areas. SC Forestry Commission is a cooperating agency in SC Quail Council and the Heritage Trust Advisory Board.
SC Economic Developers Association	Professional Association	The SC Forestry Commission maintains a membership in the SC Economic Developers Association and works with its members at the state, regional and local levels on forestry-related economic development projects.
SC Emergency Management Division	State Government	SC Forestry Commission is the lead for ESF-4, Wildland Firefighting, and participates in state-level activations of the state emergency operations center. Provide input to response plans, staffing at SEOC, expertise on incident management, firefighting, and assist with response to natural and man-made disasters. Provide law enforcement support, aircraft support, and debris removal crews after hurricanes and when lane reversal operations occur. EMD supports the SC Forestry Commission when large wildfires occur, assisting with resource requests and interfacing with FEMA.
SC Farm Bureau	Private Business Organization	SC Farm Bureau and SCFC work with policies and advisory committees in forestry-related issues.
SC Geographic Information Council (SCGIC)	State Government	The SC Forestry Commission partners with SCGIC to help coordinate activities among and between all other agencies in the state that perform geographical information systems (GIS) duties. This coordinating includes spatial data collection and management, standards development and data and information sharing. Cooperating council members include: Aeronautics Commission, DHEC, DNR, Revenue and Fiscal Affairs, DOR, DOT, EMD, Santee Cooper, SLED, DPS, USC-Institute for Families in Society, Army National Guard and the State Mapping Advisory Committee.
SC Interagency Drone Users Consortium	Professional Association	The South Carolina Interagency Drone Users Consortium or SCIDUC is a nonprofit association of drone pilots, facilitators and Unmanned Aerial System (UAS) decision makers. Its membership is exclusive to federal, state and local government employees. SCIDUC has over 160 members employed by more than 50 different government agencies. The organization is dedicated to improving communication between different agencies, leveraging each other's strengths and educating our members on cutting edge technology, regulatory changes and improvements to the industry. Several SCFC personnel, including the agency's fire chief and chief pilot, are members of the SCIDUC.
SC Law Enforcement Division - SLED	State Government	Provide state incident management team to support response to man-made or natural disasters. Coordinate response, account for responders, and formulate plans for incidents. use SLED helicopter equipped with Bambi bucket provided by the SC Forestry Commission under the existing MOU to suppress wildland fires. Provide law enforcement assistance to SLED as requested for support of hurricanes and other disasters.
SC National Guard	State Government	Conduct annual joint training. Participate in tabletop and functional exercises to prepare for wildland firefighting. During high wildfire periods, use SC NG aircraft equipped with Bambi buckets to suppress wildfires and protect homes from damage. Provide military appreciation hunts and forestry awareness programs.
SC Nature Conservancy	Non-Governmental Organization	The SCFC and SC Nature Conservancy cooperate on conservation issues relating to policies and land acquisitions. This group also supports our education and outreach programs.
SC Nursery & Landscape Association	Non-Governmental Organization	The SCNLA works with the SCFC to provide better nursery stock and species selected for given locations. This involves training and outreach programs.
SC Palmetto Agribusiness Council	Non-Governmental Organization	Agribusiness projects
SC Rural Water Administration	Non-Governmental Organization	The SCFC provides pass-through funding from LSR Grant to SCRWA to raise awareness of importance of forestry in protecting water quality downstream.
SC Timber Producers Association	Professional Association	The SC Forestry Commission's Environmental Management staff holds Best Management Practices training program for loggers and foresters.
SC Tree Farm Program	Professional Association	SCFC provides members to the state Tree Farm Committee, conducts Tree Farm inspections, and works closely with Tree Farm on landowner outreach and recognition. State Forests are certified in Tree Farm program.
SC Wildlife Federation	Non-Governmental Organization	SCFC works with this partner to make and revise policies that relate to the conservation of forest lands.
Society of American Foresters (SAF) - SC Division	Professional Association	SCFC supports SAF membership of foresters by encouraging them to join and participate in SAF sponsored events
South Carolina Ports Authority	State Government	The SC Forestry Commission cooperates with the SC Ports Authority on international trade issues for forest products.
South Carolina State Firefighters' Association	Professional Association	SCSFA represents fire departments across the state, and is a key partner in disseminating information, joint training, and mobilization of resources.
Southern Group of State Foresters	Non-Governmental Organization	The SC Forestry Commission is a member of the Southern Group of State Foresters (SGSF) and provides staff to serve on SGSF committees.
Stewardship Coordinating Committee	Non-Governmental Organization	Stewardship Coordinating Committee and the SCFC partner to advise the state foresters on the Forest Stewardship program and the Forest Action Plan.
Sustainable Forestry Initiative	Non-Governmental Organization	The Sustainable Forestry Initiative is an independent, nonprofit organization solely responsible for maintaining, overseeing and improving the internationally recognized SFI certification program. The SC Forestry Commission partners with SFI, particularly through its state implementation committee, both to certify its own forests to the SFI standard and to work with local organizations and individuals in providing leadership and best practices to improve forest management on both certified and uncertified lands.
The Conservation Fund	Non-Governmental Organization	SCFC works with this partner to make and revise policies which relate to the conservation of rural lands and conservation easements. The SCFC also partners with The Conservation Fund to purchase land.
The Forestry Association of South Carolina	Non-Governmental Organization	SC Forestry Commission works with South Carolina Forestry Association staff and members on numerous resource development projects, forest management issues, legislative issues, and landowner outreach.
The Nature Conservancy	Non-Governmental Organization	SCFC partners with The Nature Conservancy on conservation projects across South Carolina.
Trees SC	Non-Governmental Organization	SCFC and Trees SC have an MOU through which SCFC provides funding to Trees SC from a US Forest Service grant to conduct educational workshops and increase awareness of the importance of urban forestry.

These responses were submitted for the FY 2020-2021 Accountability Report by the

FORESTRY COMMISSION

Name of Partner Entity	Type of Partner Entity	Description of Partnership
University-based Research Cooperatives	Higher Education Institute	The SC Forestry Commission maintains membership in university-based cooperative research programs at NC State for access to research on tree improvement, nursery production, and forest growth models.
US Endowment for Forestry & Communities, Inc.	Non-Governmental Organization	SCFC partners with the US Endowment for Forestry & Communities whose mission is to work with the public and private sectors to improve the health and vitality of the nation's working forests and forest-reliant communities.
US Fish & Wildlife Service	Federal Government	The SCFC and US Fish & Wildlife Service cooperate on wildfire suppression, fire prevention, federal excess equipment, and training through a Cooperative Agreement.
USDA APHIS	Federal Government	The SC Forestry Commission's Marketing Program works with USDA APHIS on phytosanitary treatment issues related to forest product international trade. SCFC Forest Health program works with APHIS to combat forest pests and invasive species.
USDA Farm Service Agency	Federal Government	SCFC provides technical assistance to landowners who are participating in FSA programs such as EFRP and CRP. SCFC and FSA currently have an agreement through which FSA reimburses SCFC for costs associated with providing this assistance.
USDA Forest Service	Federal Government	The SCFC and USFS cooperate on wildfire suppression, fire prevention, federal excess equipment, and training through a Cooperative Agreement. The USFS also provides funding for these programs as well as Forest Stewardship and Urban & Community Forestry. The SC Forestry Commission's FIA crews collect forest resource data for the US Forest Service FIA database. Mill data for the USFS' Timber Production Output (TPO) program is collected by Forestry Commission staff every two years. The SCFC and USFS operate under a Good Neighbor Authority (GNA) agreement to sell national forest timber through state government procurement protocols.
USDA Natural Resources Conservation Service	Federal Government	SCFC provides technical assistance to landowners who are participating in NRCS programs such as EQIP. SCFC and NRCS currently have a Contribution Agreement through which NRCS reimburses SCFC for costs associated with providing this assistance. SCFC often partners with NRCS on landowner outreach efforts.
National Deer Association (NDA), formerly Quality Deer Management Association (QDMA)	Non-Governmental Organization	The SCFC partners with NDA to provide hunting opportunities to special groups(i.e. active and retired military). NDA is also a key partner in disseminating information on forestry and conservation.
Open Space Institute (OSI)	Non-Governmental Organization	The SCFC and OSI cooperate on conservation issues relating to policies and land acquisitions.

**FY 2020-2021 Agency Accountability Report
Reports Responses:**

**These responses were submitted for the FY 2020-2021 Accountability Report by the
FORESTRY COMMISSION**

Report Name	Law Number (If required)	Summary of Information Requested in the Report	Most Recent Submission Date	Reporting Frequency	Type of Entity	Method to Access the Report	Direct access hyperlink or agency contact
Agency Accountability Report	§1-1-810	The report "must contain the agency's or department's mission, objectives to accomplish the mission, and performance measures that show the degree to which objectives are being met." Agencies must "identify key program area descriptions and expenditures and link these to key financial and performance results measures."	September 15, 2020	Annually	Governor or Lt. Governor AND Legislative entity or entities	Available on another website	https://www.scstatehouse.gov/reports/aar2020/P120.pdf
Agency annual report	§48-23-90	Document of record capturing all of the agency's essential programs, activities, finances, accomplishments	January 1, 2021	Annually	South Carolina state agency or agencies	Available on another website	https://www.scstatehouse.gov/reports/ForestryComm/SCFCAnnualReportFY2019-2020.pdf
Debt Collection Report	Proviso 117.33, FY 2021-22 Appropriations Report	Report detailing agency's amount of outstanding debt and all methods it has used to collect that debt.	February 18, 2021	Annually	Legislative entity or entities	Available on agency's website	www.trees.sc.gov/reports/scfcdebtcollectionreport2020.pdf
Federal Excess Personal Property (FEPP) Audit & Review		personal property management reviews of the SC Forestry Commission's FEPP program to ensure compliance with all federal and departmental regulations, policies and procedures.		Every Two years	Entity within federal government	Available on another website	www.trees.sc.gov/reports/scfcfederalexcesspersonalpropertyandfirefightingpropertyreview2019.pdf
Fines & Fees Report	Proviso 117.71, FY 2021-22 Appropriations Report	Report documenting fees and fines collected by the agency during the fiscal year for registrations & rentals, services performed and user fees	August 26, 2020	Annually	Legislative entity or entities	Available on agency's website	www.trees.sc.gov/reports/scfcfinesandfeesreport2021.pdf
InfoSec and Privacy Survey	Proviso 117.107, FY 2021-22 Appropriations Report	To better the Division of Information Security's (DIS) understanding of agency's efforts to comply with the State's information security policies		Annually	South Carolina state agency or agencies	Hard copy available upon request	not applicable, as this report contains sensitive security information or personally identifiable information
IT Data Collection and Planning System	Proviso 117.112, FY 2021-22 Appropriations Report	Report on agency's information technology and budget including IT inventory; previous year's, planned current year and projected next year's IT expenditures and IT personnel. Data is to link to with agency's related EBO B1/B2 Form for DTO review and approval. System is also used for IT procurements of \$50,000 or more to for DTO review and recommendation.	August 2, 2020	Annually	South Carolina state agency or agencies	Hard copy available upon request	not applicable, as this report contains sensitive security information or personally identifiable information

**These responses were submitted for the FY 2020-2021 Accountability Report by the
FORESTRY COMMISSION**

Report Name	Law Number (If required)	Summary of Information Requested in the Report	Most Recent Submission Date	Reporting Frequency	Type of Entity	Method to Access the Report	Direct access hyperlink or agency contact
Report on Applying Agreed-Upon Procedures		Report on agreed-upon procedures of the agency with regard to cash receipts/revenues, cash disbursements/non-payroll expenditures, journal entries and transfers, surety bond transactions and cost-share fund administration.		Annually	South Carolina state agency or agencies	Available on agency's website	www.trees.sc.gov/reports/scfcagreeduponproceduresreport2020.pdf