



2024 Annual Accountability Report

Forestry Commission

Agency Code: P120

Table of Contents

Agency’s Discussion and Analysis	1
Agency Organization Chart	11
Reorganization and Compliance	12
Strategic Plan Results	14
Strategic Plan Development	22
Budget Data	29
Legal Data	30
Services Data.....	43
Partnerships Data.....	50
Reports Data	60
Submission Form.....	63

AGENCY NAME:	South Carolina Forestry Commission		
AGENCY CODE:	P120	SECTION:	043

AGENCY’S DISCUSSION AND ANALYSIS

The SC Forestry Commission was created in 1927 with its General Duties defined in State Code 48-23-90. In summary, the Code requires the agency to make an annual report to the General Assembly on “*forest conditions ... including recommendations to the public as to reforestation. ... to prevent, control and extinguish fires, including the enforcement of ... laws pertaining to the protection of the forests and woodlands give such advice, assistance and cooperation to private owners of land and promote ... appreciation by the public of the advantages of forestry and the benefits cooperate with the federal government in the distribution of funds allotted to the State for forestry ...*” To meet its statutory requirements, the Forestry Commission created a mission, vision, and values statement and an associated Strategic Plan to direct its operations.

Commission staff and the agency’s Board of Commissioners conduct a detailed review and recording of the agency’s progress toward attaining Strategic Plan goals on a triannual basis. This action ensures that agency operations are properly aligned with its mission and informs the organization of its progress, direction, and purpose. This alignment also ensures that the Commission continues to effectively support the growth of the state’s forest industry to levels beyond its 2020 level of \$23.2 billion economic impact and 100,000+ jobs. Beyond forestry’s economic contributions, forests cover two-thirds of the state at 12.82 million acres, enhancing the state’s quality of life.

The Commission has five primary goals identified in its Accountability Report (AR) that are aligned with its Mission, Strategic Plan, Forest Action Plan, and statutory requirements. These goals are Enhance Public Benefits from Trees and Forests, Protect Forests from Harm, Conserve Working Forests, Raise Awareness about Our Forests, and Strengthen the Commission for the Future. For each goal, the agency has identified strategies, actions, and performance measures to ensure their achievement.

The AR provides the agency with the opportunity to submit a “Discussion and Analysis” section that comments on (1) Factors affecting the agency’s performance during the past year, (2) Performance efforts and results, and (3) Plans to improve performance. This comment section appears below and is organized by the agency’s five goals.

Goal 1: Enhance Public Benefits from Trees and Forests. This goal aims to increase the full range of benefits from South Carolina’s forests – including healthy and growing markets, new jobs, clean water, clean air, wildlife habitat, recreation, natural beauty, health benefits, and more.

Factors affecting performance in the past year:

- **Positive factors** – The FY25 budget included funding to establish a fourth FIA crew, which, once fully staffed and trained, will allow the agency to achieve the desired 5-year FIA inventory cycle. SC’s accurate Forest Inventory & Analysis (FIA) timber inventory and record level of pine sawtimber support economic development and continued capital investment within the forestry sector (Fig. 1). Our public-private partnership with ArborGen focuses agency efforts on tree improvement while still providing high-quality seedlings for South Carolina landowners. The Commission’s Tree Improvement program is self-sustaining due to revenue from seed and cone sales.
- **Negative factors** – Inflation and high interest rates have impacted businesses and the economy; the closure of paper mills in North Charleston, SC and Canton, NC has reduced demand for pulpwood, decreased stumpage prices, and negatively impacted supply chains statewide; the current oversupply of pine sawtimber has decreased stumpage prices of large-diameter timber for forest landowners; decreasing supply of small-diameter pine; inadequate capacity to maintain the desired 5-year FIA inventory cycle; and recent FIA data indicate a downward trend in forested acres primarily due to land conversion to agriculture and urban development.

AGENCY NAME:	South Carolina Forestry Commission		
AGENCY CODE:	P120	SECTION:	043

Performance efforts and results:

- The Commission, in partnership with the Forestry Association of South Carolina, formed the Forest Recovery Task Force to catalyze market-based conservation efforts to bolster SC’s forestry supply chain and sustain the state’s forests so they can continue to provide economic, environmental, and social benefits. State Forester Phillips testified before the House Agriculture, Natural Resources, and Environmental Affairs Committee, the Senate Fish, Game, and Forestry Committee, and the Economic Development, Transportation, and Natural Resources Subcommittee of the House Legislative Oversight Committee on the efforts of this task force.
- Nearly \$105 million in capital investment projects announced in FY24. These announced projects are expected to create 340 new jobs (Fig. 1). There were 5 forest products-based announcements this fiscal year.
- Total timber production from South Carolina forests decreased 13% in 2022 to 772 million cubic feet and, was valued at more than \$1.06 billion (Fig. 2). Sawlogs, the state’s second-leading forest product by volume, saw a production decrease of 32%, dropping to 267 million cubic feet between 2021 and 2022. Sawlogs remain South Carolina’s most valuable forest product by sector, accounting for \$415 million (~39%) of delivered timber value. The agency completed data collection for the 2023 Timber Products Output (TPO) survey and anticipates that the downward trend will continue due to mill closures and economic conditions.
- For FY24, the Forest Markets Development Index, which quantifies the agency’s efforts to retain and grow markets for forest products, was 7.9. This is 26% above the annual target. SCFC staff provided 239 business assists, engaged on 15 economic development projects, and participated in three trade events during the fiscal year.
- For FY24, the Forest Ecosystem Benefits Index was 7.21, which is 9% above the annual target. The agency’s Environmental Management Program provided 19.75 hours of instruction across 16 training programs, reaching 556 loggers, landowners, and forestry professionals. Best Management Practices (BMP) Foresters completed 238 BMP courtesy exams to help ensure compliance. Compliance on sites that receive a courtesy exam remains very high at 100%. In total, BMP staff completed 571 site visits and responded to 18 complaints.
- For FY24, the Community Forestry index was 7.65, which is more than 7% above baseline and 53% above the annual target. The Urban and Community Forestry Program’s outreach served an estimated 3.54 million citizens and provided nearly 1,200 training hours to communities and tree care professionals. These higher accomplishments were due in large part to increased grant-related work that occurred in partnership with groups such as the Green Infrastructure Center, Clemson Extension, and Trees SC.

Plans to improve performance:

- Continue engagement with the SC Forest Recovery Task Force and support of its efforts to catalyze market-based conservation opportunities to bolster SC’s forestry supply chain and sustain the state’s forests so they can continue to provide economic, environmental, and social benefits.
- Recruit two new forester positions to staff a fourth FIA crew, providing capacity necessary to increase plot production and maintain a 5-year inventory cycle going forward. Having timely and accurate FIA data is critical to the state’s economic development efforts in forestry sectors.

Goal 2: Protect Forests from Harm. Protecting lives and property from wildfire, decreasing wildfire risk and damage, mitigating threats to forest health, and responding to disasters are critical components of the agency’s mission.

Factors affecting performance in the past year:

- Positive factor – The FY25 budget includes funding to improve compensation for agency firefighters, Class I law enforcement officers, dispatchers, and pilots, which will increase the agency’s ability to recruit and retain these critical positions. The budget also included FTEs and funding for three new positions that will

AGENCY NAME:	South Carolina Forestry Commission		
AGENCY CODE:	P120	SECTION:	043

bolster agency recruitment, training and safety programs, ensuring the continued protection of forests, homes, and lives of SC's citizens.

- Budget appropriations and the strategic use of carryforward funds allowed the agency to procure 11 new enclosed-cab bulldozer firefighting units in FY24, keeping the agency on track to replace all open-cab bulldozers by the end of calendar year 2025. With this purchase, 93% of frontline firefighting bulldozers will be the safer enclosed-cab units once they reach the field (Fig. 3). FY23 and FY24 budgets included a proviso that authorizes the Commission to carry forward unexpended funds for firefighting equipment, which continues to have a positive impact due to supply chain delays beyond the agency's control.
- Negative factors – Inflation and supply chain issues continue to impact the agency's ability to procure firefighting equipment. While the agency was able to procure 11 enclosed-cab bulldozers in FY24 and 10 in FY23, supply chain issues have delayed the delivery of the transports necessary to haul these bulldozers. These transports are expected to be delivered in Fall 2024 and all 21 units will be issued to the field at that time.
 - Reduced firefighting capacity and long-term vacancies lessen the agency's ability to protect the forest resource, structures, the public and firefighters. Difficulty recruiting new firefighters (bulldozer operators and FMOs), dispatchers and pilots due to workforce challenges and noncompetitive wages are impacting the agency's ability to respond to wildfires. Recruiting, training, and safety are significant concerns, given the substantial number of firefighters eligible to retire over the next five years. Fifty percent of pilots, 35% of dispatchers, 50% of frontline firefighters and 50% of Fire Management Officers (FMOs) are eligible to retire in the next five years. Approximately 25% of agency employees can retire today.
 - More complex wildfire control situations due to population growth, which is expanding the Wildland Urban Interface (WUI) in SC, and inadequate capacity. At the same time, federal grant funding for three Wildfire Prevention staff positions is being discontinued. These positions are critical for prevention and mitigation of wildfires in the WUI.
 - Maintenance for the agency's Computer-Aided Dispatch System (CADS) software was unexpectedly discontinued by the service provider with two years remaining on the contract. This forced the agency to speed up plans to migrate to a new dispatch software solution.

Performance efforts and results:

- Leveraging funding received in the FY24 budget, the agency awarded a 5-year contract for Single Engine Air Tankers (SEATs), which provide increased capacity to respond to wildland fires during initial attack. These resources will be available for service in fall of 2024 and a huge step forward for wildfire response in SC.
- The agency purchased 11 safer enclosed-cab dozers, toward the 160 targets, in FY24. The agency needs to procure 11-12 dozer units each year based on the 15-year safe service life for this firefighting equipment (Fig. 3).
- For FY24, the SCFC responded to 1,221 wildfires that burned 7,722 acres. Fifty-five percent of these fires were caused by debris burning, the number 1 cause of wildfires in SC.
- Average wildfire response time was 39.72 minutes in FY24, which is above the target response time of 38 minutes. This metric is 5% above the five-year average (Fig. 4). In FY21 the agency revised its target, increasing it from 35 minutes to 38 minutes, due to long-term firefighter vacancies and the resulting larger coverage areas.
- For FY24 the Wildfire Prevention Index was 6.39, which is nearly 15% below the target. This decrease was driven by a reduction of completed fuel mitigation projects this year. However, wildfire prevention efforts continued across the state, including wildfire presentations that reached over 300 people, 12 cooperator meetings for Community Wildfire Protection Plan developments and 17 community outreach events with more than 4,650 people in attendance. Other prevention efforts have resulted in 104 community wildfire risk assessments in association with both Firewise USA communities and fuel mitigation grants, which funded 1,234 acres of fuel mitigation projects using approximately \$140,000 in federal grant funds. This

AGENCY NAME:	South Carolina Forestry Commission		
AGENCY CODE:	P120	SECTION:	043

fiscal year, our prevention staff hosted an inaugural SC Community Wildfire Preparedness Summit, which invited existing and potential Firewise USA communities and cooperators to discuss the wildfire problem in SC and ways to improve those issues. Another major focus this year was the initiation of county-wide Community Wildfire Protection Plans (CWPPs) for Horry and Orangeburg counties.

- For FY24 the Forest Health Index was 5.42, which is 16% below FY23. The primary drivers of this drop are increasing costs to deliver forest health programs and stable/declining federal funds to support this work. In FY24 1,393 acres received southern pine beetle treatments versus 2,421 acres in FY23.

Plans to improve performance:

- Request funding for recruitment and retention efforts. Competitive salaries and stable funding are critical to recruit and retain high-quality employees needed to ensure the Forestry Commission can fulfill its mission.
- Request funding to retain three critical Wildfire Prevention positions and increase wildfire prevention efforts to reduce fire occurrence.
- Request funding to expand the capacity of agency forest health programs and offset rising costs.
- Request recurring funding to support critical IT infrastructure for the agency’s emergency response mission including the agency’s new dispatch solution, which replaced an end-of-life product that is no longer supported.
- Leverage information technology systems to increase efficiency in the delivery of forest protection programs while also improving reporting capabilities.
- Strengthen safety and training programs for agency personnel and cooperators.

Goal 3: Conserve Working Forests. This goal aims to ensure the sustainability and active management of South Carolina’s forests to maintain the economic, environmental, and societal benefits these lands provide.

Factors affecting performance in the past year:

- Positive factor – High level of landowner satisfaction with the quality of assistance provided. The FY24 budget included funding to improve compensation for agency firefighters, Class I law enforcement officers and foresters, which has increased the agency’s ability to recruit and retain these critical positions. Successfully recruited the Staff Forester position, which has bolstered training efforts for newly hired foresters. Agency’s increased engagement with other state conservation agencies, land trusts and non-profit conservation partners is creating opportunities to conserve more working forests in SC.
- Negative factors - Difficulty recruiting new foresters due to workforce challenges along with the challenge of training a large cohort of new employees are impacting the agency’s ability to assist forest landowners. -Insufficient cost-share funding for reforestation through the Forest Renewal Program has resulted in a backlog of greater than 1 year, decreasing the productive potential of family-owned forestlands. Insufficient reforestation exacerbates the decreasing supply of small-diameter pine and threatens economic development efforts.

Performance efforts and results:

- The agency assisted 1,776 landowners during FY24, which is 11% below the annual target of 2,000. Shortfall is due to recruitment/retention issues and new/inexperienced forestry staff (Fig. 5).
- Achieved a 95% customer satisfaction level for forest management assistance for FY24 (97% in FY23).
- For FY24 the agency’s Prescribed Fire Effort Index, which is a composite measure that quantifies the agency’s efforts to increase the responsible use of prescribed fire, was 5.18. This is a 35% increase compared to FY23 results and 29% above the target of 4.0. During FY24, the agency recorded a significant increase in prescribed burning – more than 477,000 acres counting all sources. SCFC personnel carried out prescribed burning on 10,761 acres and performed standby service on 2,449 acres. In addition, the agency leveraged federal funds to create a new Prescribed Fire Coordinator position that has improved agency utilization of non-SCFC fire crews and encouraged the formation of prescribed fire associations, enabling

AGENCY NAME:	South Carolina Forestry Commission		
AGENCY CODE:	P120	SECTION:	043

more private landowners to use prescribed fire to meet their objectives. Seventy percent of all forestry prescribed burns during FY24 were supervised by personnel who had obtained CPFM certification.

- Partnering with SC Conservation Bank, Open Space Institute, and The Nature Conservancy, the Forestry Commission acquired 2,248 acres in Georgetown County at, essentially, no cost to the agency. This property was added to Wee Tee State Forest, increasing the size of the property to more than 18,000 contiguous acres, allowing for expanded public access and contributing to a growing corridor of protected land in the Santee Basin.
- Partnering with SC Department of Commerce, Richland County, Open Space Institute, Water & Land Solutions, and Congaree Land Trust, the SCFC was selected as the long-term steward for the 5,000 acres Congaree Mitigation Site in Richland County known as Millaree. Once transferred to the agency the property will become a new state forest managed for multiple uses as are SC’s five other state forests.

Plans to improve performance:

- Request funding for land conservation and to establish a land conservation position with the agency’s State Lands program area to bolster agency efforts to conserve working forests.
- Request an FTE and operating funds to make permanent the Prescribed Fire Coordinator position within the agency and bolster efforts to increase the use of prescribed fire for the myriad benefits this practice provides, including wildfire mitigation.
- Recruit vacant field forester positions to increase capacity to provide landowner assistance and aid with succession planning.
- Strengthen training programs for agency personnel to deliver services more efficiently.
- Evaluate opportunities to increase funding for cost-share assistance programs.
- Leverage information technology systems to increase efficiency in the delivery of forest management programs while also improving reporting capabilities.

Goal 4: Raise Awareness about Our Forests. Raising awareness among decision-makers and the public about the environmental, economic, and societal benefits of active forest management is necessary to acquire needed legislation/policies, garner public support, and support private landowner timber production.

Factors affecting performance in the past year:

- Positive factors - Efficient use of website, social media, and collaboration with partners allows broad distribution of messaging at a low cost. Technical staff collaborates with design staff to create an attractive, intuitive, informative website, produce high-impact publications, attract a large social media audience, and conduct large-scale messaging campaigns. The FY25 budget includes funding to establish a fourth FIA crew which, once fully staffed and trained, will allow the agency to achieve the desired 5-year FIA inventory cycle.
- Negative factors - The FIA program is understaffed. Increasing difficulty in filling vacancies, increases in employee training requirements, and additional workload due to program changes have resulted in the program failing to meet data collection production goals. Currently, the program has a backlog of approximately 558 plots, which is equivalent to approximately 11 months of labor. Falling behind neighboring states reduces South Carolina’s competitive advantage in attracting forestry-based capital investments.

Performance efforts and results:

- New federal grant funding was used to hire two FIA Foresters in temporary grant positions to bolster plot production. FIA plot production was 81% of the target for FY24, which is down 8% from last fiscal year due to difficulties recruiting and retaining FIA Foresters, especially those in temporary grant positions. However, accuracy scores remain very high (>98%).
- Efforts to grow the number of Project Learning Tree (PLT) facilitators were rewarded with significant growth in FY24. Currently 51 certified PLT facilitators are active in SC, which is a 42% increase over FY23 and the highest number of PLT facilitators ever recorded in SC.

AGENCY NAME:	South Carolina Forestry Commission		
AGENCY CODE:	P120	SECTION:	043

- The addition of a full-time social media coordinator last year has significantly bolstered the SCFC’s presence on all major social media platforms while simultaneously expanding its ability to gather quality metrics related to these efforts. The agency Facebook page boasts more than 38,000 followers and has an engagement rate of 8%, which is more than four times higher than the average for government agencies. For FY24 the social media analytics index was 6.23.

Plans to improve performance:

- Recruit a permanent fourth FIA crew to provide capacity necessary to increase plot production and maintain a 5-year inventory cycle going forward. Having timely and accurate FIA data is critical to the state’s economic development efforts in forestry sectors.
- Continue to improve social media and outreach efforts to harness its full potential for leveraging agency messaging and building new audiences. Increase cross-referencing of social media and website content to amplify messaging across all communication platforms.
- Leverage partnerships and federal funding to amplify messaging.

Goal 5: Strengthen the Commission for the Future. This goal aims to strengthen the Forestry Commission through employee development, improvements in efficiency and effectiveness, and a renewed focus on safety to meet the future needs of the citizens of SC.

Factors affecting the agency’s performance in the past year:

- Positive factors – Appropriations have enabled the restoration of critical positions, over the last few years, that allow the agency to better serve the forestry community of SC. The FY25 budget included funding to improve compensation for agency firefighters, Class I law enforcement officers, dispatchers, and pilots, which will increase the agency’s ability to recruit and retain these critical positions going forward. The budget also included three new FTEs which will bolster agency efforts to improve recruitment, training, and safety.
- Negative factors - Limited capacity and recruiting challenges in critical program areas are causing firefighters and foresters to cover greater territory, increasing response time, fire size, and wildfire damage risk while reducing landowner assistance, wildfire prevention and outreach (Figs. 4, 5).
 - Inexperienced new hires and difficulty recruiting critical positions due to workforce challenges and noncompetitive wages are impacting the agency’s ability to fulfill its mission. Recruiting challenges are a significant concern given the high number of employees that are eligible to retire over the next five years. Forty-one percent of the agency’s workforce is eligible to retire within 5 years and 25% are currently beyond their eligibility to retire.
 - Increasing recurring costs for IT infrastructure and the early termination of maintenance for agency’s Computer-Aided Dispatch System (CADS)

Performance efforts and results:

- Successfully recruited the Assistant Protection Chief, Staff Forester, and two pilot positions received in the FY23 budget.
- Funding received in FY24 along with agency efforts to address compensation issues in recent years have improved retention efforts. The overall turnover rate for FY24 is 8.4%, down from 11.9% in FY23. The number of qualified applicants for open forestry positions in the agency more than tripled from 4 applicants/posting in FY23 to 12.5 applicants/posting in FY24. For forester positions the agency averaged 14 qualified applicants/posting in FY24 which is over four times the FY23 average. Twelve forester positions were hired in FY24, which is tremendous and speaks to stepped-up recruiting efforts within the agency. However, the agency still has five forester positions that are currently vacant.
- In 2024 the SCFC completed its third comprehensive employee engagement survey since 2018. These triennial comprehensive surveys are complemented by biannual “pulse” employee engagement surveys to allow the agency to continually monitor progress. The results of the 2024 survey show continued

AGENCY NAME:	South Carolina Forestry Commission		
AGENCY CODE:	P120	SECTION:	043

improvement (Fig. 6). The full 2024 survey achieved a 66% response rate and resulted in an employee engagement index of 7.83 compared to 7.53 in 2021. The agency uses the feedback from employees gained from these surveys as we seek to continually improve the agency’s work environment.

- Appropriations and the strategic use of carry-forward funds has allowed the agency to invest in technology to increase its efficiency and effectiveness. In FY24 nearly 32% of the agency’s IT spending was leveraged to modernize and transform the agency. While implementation is currently in progress, the most significant project was the replacement of the agency’s legacy Computer Aided Dispatch System (CAD). This new system will modernize our fire dispatch operations and provide field staff greater visibility into incidents from their mobile devices. Other examples include a new fleet maintenance package that provides diagnostic data to our mechanics and the purchase of three AI-enabled wildfire detection cameras that will be installed in strategic locations to monitor the horizon for evidence of wildfire.

Plans to improve performance:

- Request funding for recruitment and retention efforts. Competitive salaries and stable funding are critical to recruit and retain high-quality employees needed to ensure the SCFC can fulfill its mission.
- Request recurring funding to support critical IT infrastructure for agency emergency response mission including the agency’s new dispatch solution, which replaced an end-of-life product that is no longer supported.
- Leverage information technology systems to increase efficiency in the delivery of agency programs while also improving reporting capabilities.
- Develop a formal succession plan to address expected turnover due to the high number of employees eligible to retire within the next five years.
- Continue biannual “pulse” employee engagement surveys and periodic full employee engagement surveys to understand employee perspectives and leverage results to increase employee engagement and create an environment where all employees feel valued and are motivated to help the SCFC be successful.
- Strengthen safety and training programs for agency employees to ensure they are prepared to meet the current and future demands of our mission.

SUMMARY AND CONCLUSION

This Accountability Report fulfills its two primary purposes: providing information to support the agency’s budget and providing a basis for Agency Head Salary Commission decisions. The report describes the agency’s Strategic Plan goals, performance measures, and outcomes and has linked program area attributes to key financial and performance measures as required by statute. The Commission appreciates this opportunity to document that the agency understands its legal mandates, meets its requirements, documents current outcomes, and plans to ensure successful future outcomes.

In summary, the agency’s job #1 continues to be the safety of employees and the public that they serve and protect. To meet this goal staffing, compensation, and training must be adequate (Goal 5). Staff must also have adequate quantities of safe, reliable equipment, and appropriate technology to increase efficiency and effectiveness. Budget requests are designed to ensure safe working conditions for employees and living conditions for the public. Another top priority is the satisfaction and care of agency customers, the citizens of South Carolina. Meeting this objective requires adequate funding and highly qualified, well-trained employees that meet individual citizens’ needs as well as the overarching need to protect the forest resource and retain and increase forest industry job numbers statewide (Goals 1-5). Adequate funding and sound management guided by this AR will ensure that the agency meets these highest priority objectives and supporting ones and accomplishes its statutory duties to *“Protect, promote and enhance South Carolina’s forests for the benefit of all.”*

AGENCY NAME:	South Carolina Forestry Commission		
AGENCY CODE:	P120	SECTION:	043

Risk Assessment and Mitigation Strategies

The results of the agency failing to accomplish its mission to “Protect, promote and enhance South Carolina’s forests” would be as follows:

The most negative impact from a failure to protect the forest resource from wildfires would be uncontrolled wildfires that would destroy forests, structures, and lives, in turn resulting in a cascade of negative effects. Among these effects would be the loss of timber resources and investment returns for private landowners; decline of forest product manufacturing capacity and therefore jobs; wildlife habitat destruction; impaired water quality; soil erosion, lost recreational opportunities and revenue; increased timber theft and fraud on private lands; destruction of homes and businesses, and deaths.

The most negative impact from a failure to promote and enhance the forest resource would be a decline in forest industry retention and growth, which would trigger additional adverse consequences. Not only would the resultant lack of markets lead to reduced returns on landowner investments, but it would also cause a decline in active forest management, which equates to less timber production and therefore fewer industry jobs. Secondary effects from this lack of development and management would be an increase in forest insect and disease damage, increased wildfire risk, deforestation, damage to forested wetlands and waterways, and a decline in the public’s understanding of the value of forests and the forest industry.

Outside help needed to mitigate the failure of the agency to accomplish its mission would consist of:

- Requesting additional fire protection resources from surrounding states through the Southeastern Forest Fire Protection Compact and US Forest Service, which would require additional state funds to pay for these resources.
- Securing additional federal funding and staffing for economic development, technical assistance to family forest owners, and for wildfire suppression/prevention efforts.

To help resolve the issue before it became a crisis, the General Assembly could do the following:

- Provide funding to ensure competitive wages for critical agency positions.
- Provide funding and FTEs to retain positions threatened by unstable funding sources.
- Provide stable funding for retaining and growing the forest industry and encouraging landowners to actively manage their forest resources and grow more timber.
- Implement state policies that favor the use of domestic renewable resources, including sustainable forest products, in buildings, for energy production, and for biofuels.

Figure 1. Forest-based economic development

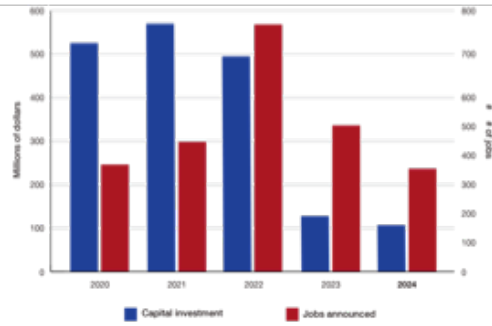


Figure 2. South Carolina production of primary timber products, 1936-2022

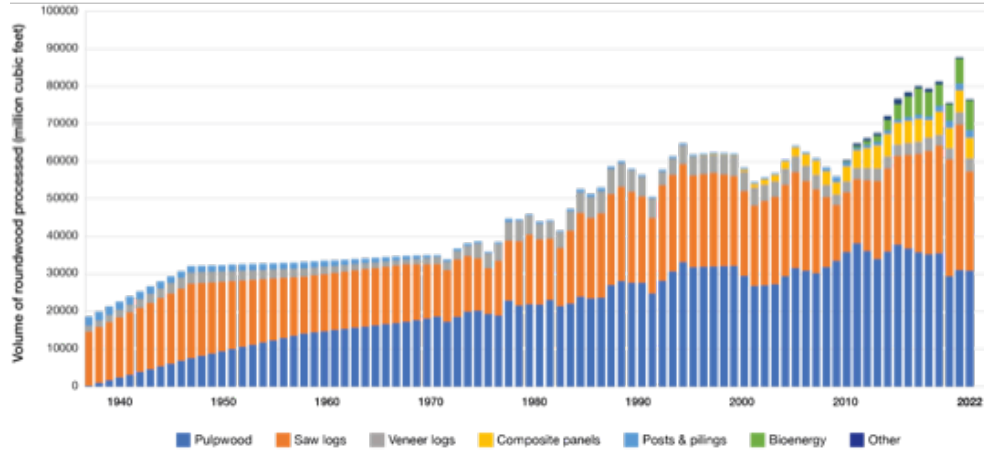


Figure 3. Firefighting dozers by service life category

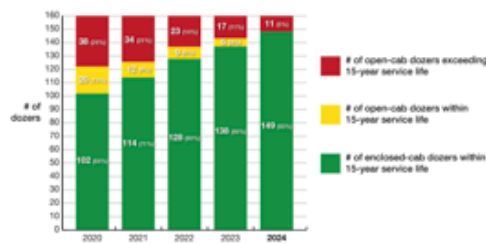


Figure 4. Average fire response time

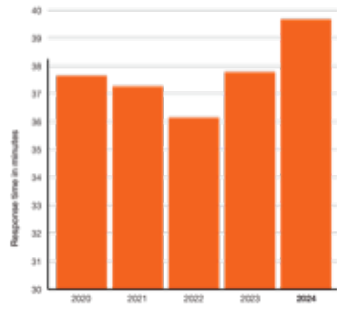


Figure 5. Landowners assisted

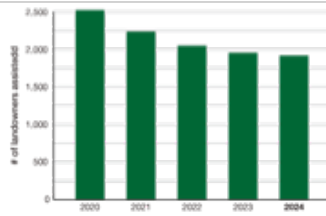
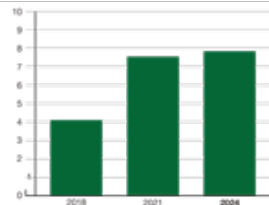


Figure 6. Employee engagement surveys



AGENCY NAME:

South Carolina Forestry Commission

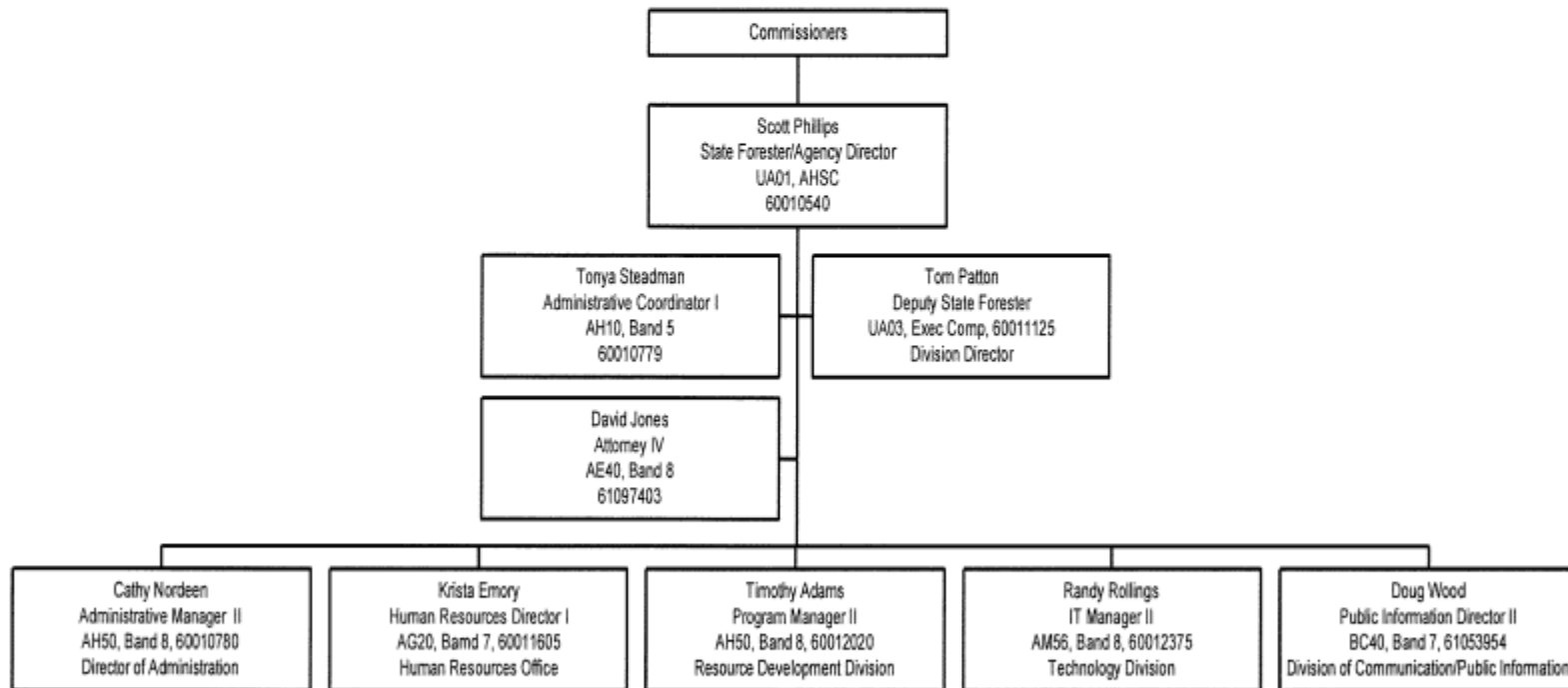
AGENCY CODE:

P120

SECTION:

043

South Carolina Forestry Commission Director's Office



2024

Reorganization and Compliance

as submitted for the Accountability Report by:

P120 - Forestry Commission

Primary Contact

First Name	Last Name	Role/Title	Email Address	Phone
Dana	Austin	Privacy Officer	daustin@scfc.gov	803-896-8805

Secondary Contact

First Name	Last Name	Role/Title	Email Address	Phone
Tom	Patton	Deputy State Forester	tpatton@scfc.gov	803-896-8849

Agency Mission

Adopted in:

2020

Protect, promote, and enhance South Carolina's forests for the benefit of all.

Agency Vision

Adopted in:

2020

Healthy forests, resilient communities, impeccable service

Recommendations for reorganization requiring legislative change:

None

Agency intentions for other major reorganization to divisions, departments, or programs to allow the agency to operate more effectively and efficiently in the succeeding fiscal year:

None

Significant events related to the agency that occurred in FY2024

Description of Event	Start	End	Agency Measures Impacted	Other Impacts
A late freeze in spring 2022 killed much of the flower crop at NFC, impacting our fall harvest in 2023. Reduced tree planting and industry mergers have reduced seed sale revenue. Three progeny tests were measured last fall, and a late Coastal Lob test was planted December 2023. Our revenue comes from cone revenue and a seed auction. We had no cone revenue and minimal seed revenue due to low bid pricing.	August	May	Nursery & Tree Improvement Index	
We had one injury that required multiple procedures and an extended recovery period, while another injury involved a strength issue, which took time for the employee to regain the necessary strength to safely return to work.	August	May	Lost- time incidents that resulted in day(s) away from work	

Is the agency in compliance with S.C. Code Ann. § 2-1-220, which requires submission of certain reports to the Legislative Services Agency for publication online and the State Library? (See also S.C. Code Ann. § 60-2-20).

Yes

Reason agency is out of compliance: (if applicable)

Is the agency in compliance with various requirements to transfer its records, including electronic ones, to the Department of Archives and History? See the Public Records Act (S.C. Code Ann. § 30-1-10 through 30-1-180) and the South Carolina Uniform Electronic Transactions Act (S.C. Code Ann. § 26-6-10 through 26-10-210).

Yes

Does the law allow the agency to promulgate regulations?

Yes

Law number(s) which gives the agency the authority to promulgate regulations:	§48-23-200	
Has the agency promulgated any regulations?	Yes	
Is the agency in compliance with S.C. Code Ann. § 1-23-120 (J), which requires an agency to conduct a formal review of its regulations every five years?	Yes	
(End of Reorganization and Compliance Section)		

FY2024

Strategic Plan Results

as submitted for the Accountability Report by:
P120 - Forestry Commission

- Goal 1** Enhance Public Benefits From Trees And Forests
- Goal 2** Protect Forests From Harm
- Goal 3** Conserve Working Forests
- Goal 4** Raise Awareness About Our Forests
- Goal 5** Strengthen The Commission For The Future

Perf. Measure Number	Description	Base	Target	Actual	Value Type	Desired Outcome	Time Applicable	Calculation Method	Data Source	Data Location	Stakeholder Need Satisfied	Primary Stakeholder	State Funded Program Number Responsible	Notes
1.1 Promote programs and practices that safeguard South Carolina's water, air, soil, wildlife habitat, recreation and natural beauty. State Objective: Public Infrastructure and Economic Development														
1.1.1	Forest ecosystem benefits index	6.74	6.6	7.21	Rank	equal to or greater than	State Fiscal Year (July 1 - June 30).	This index rank is calculated as a weighted composite score with a minimum value of 1 and a maximum value of 10 incorporating the following metrics: Percent BMP compliance rate from Courtesy Exams; percent BMP compliance rate from BMP Monitoring; number of BMP Courtesy Exam and BMP monitoring site visits; contact hours of BMP/TOP programs delivered; number of active ecosystem service projects	Agency records	These data are stored on BMP Program Manager computers.	Water quality is adequately protected for downstream water users when index score is high.	The primary stakeholders are downstream water intakes and recreational water users.	0505.010000.000	
1.2 Deliver programs and services that retain, develop and expand sustainable timber and non-timber markets. State Objective: Public Infrastructure and Economic Development														
1.2.1	Announced capital investment in forestry (millions \$)	\$ 124.40	\$ 250	\$ 104.90	Dollar Amount	equal to or greater than	State Fiscal Year (July 1 - June 30).	Sum of \$ capital investment announced	SC Forestry Commission (SCFC) and SC Department of Commerce (SCDOC) Records	These data are stored on Resource Development Division computers.	Forest landowners benefit from the announcement of new forest product markets as there is more demand for their wood.	All forest landowners benefit from additional markets.	0505.010000.000	FY'24 was an active year for industry recruitment and expansion. If two active projects had announced by the end of the fiscal year, we would have exceeded our goal. Both projects are still active and South Carolina is a finalist in one of the projects.
1.2.2	Announced new job creation in forestry	500	250	340	Count	equal to or greater than	State Fiscal Year (July 1 - June 30).	Sum of # new jobs announced	SCFC and SCDOC Records	These data are stored on Resource Development Division computers.	The South Carolina workforce benefits when forest product announcements create jobs.	The South Carolina workforce, including loggers.	0505.010000.000	
1.2.3	Industry Timber Production and Consumption (thousand cubic feet)	880,000	800,000	772,000	Count	equal to or greater than	Calendar Year (January 1 - December 31)	Data derived from TPO survey	US Forest Service Timber Products Output (TPO) Program	The individual mill data resides on SCFC and USDA FIA computers.	Forest industry is the primary user of TPO data to gauge the health and sustainability of the industry.	Forest industry.	0505.010000.000	The 2 paper mill closures are not in this data yet. They both closed in June 2023. 2023 data will be released this Fall. The decline in timber production and consumption was a result of a general economic decline following the peak Covid stimulus years.

Perf. Measure Number	Description	Base	Target	Actual	Value Type	Desired Outcome	Time Applicable	Calculation Method	Data Source	Data Location	Stakeholder Need Satisfied	Primary Stakeholder	State Funded Program Number Responsible	Notes
1.2.4	Forest markets development index	6.65	5.5	7.9	Rank	equal to or greater than	State Fiscal Year (July 1 - June 30).	This index rank is calculated as a weighted composite score with a minimum value of 1 and a maximum value of 10 incorporating the following metrics: Number of agency-led trade events; number of active economic development projects; number of business assists; number of market-related publications; and percent of TPO surveys completed	Agency records	These data are housed on Resource Development program computers.	Retaining and growing markets for forest products	Forest industry.	0505.010000.000	
1.3 Engage communities to grow and sustain healthy trees and forests													State Objective: Public Infrastructure and Economic Development	
1.3.1	Community Forestry Index	7.11	5	7.65	Rank	equal to or greater than	State Fiscal Year (July 1 - June 30).	This index rank is calculated as a weighted composite score with a minimum value of 1 and a maximum value of 10 incorporating the following metrics: Number of people served; number of annual Tree City USA designations; contact hours delivered on urban forestry topics; contact hours delivered specific to community and county planning	Agency records	Federal CARS database, Urban Forestry Coordinator's records, Arbor Day Foundation	Ecosystem benefits of trees	Urban and suburban residents	0505.010000.000	
1.4 Engage in tree improvement to improve the health and productive capacity of our forests													State Objective: Public Infrastructure and Economic Development	
1.4.1	Nursery & Tree Improvement Index	5.87	5	3.2	Rank	equal to or greater than	State Fiscal Year (July 1 - June 30).	This index rank is calculated as a weighted composite score with a minimum value of 1 and a maximum value of 10 incorporating the following metrics: Nursery and Tree Improvement total revenue; bushels of improved cones harvested; percent of seedling quota sold annually; PRS composite score of seed sold; number of active progeny tests	Agency records	These data are stored on N&TI Program Manager computers.	High quality seedlings are available to SC landowners at competitive prices.	Forest landowners in SC.	0505.010000.000	A late freeze in spring 2022 killed much of the flower crop at NFC, impacting our fall harvest in 2023. Reduced tree planting and industry mergers have reduced seed sale revenue. Three progeny tests were measured last fall, and a late Coastal Lob test was planted December 2023. Our revenue comes from cone revenue and a seed auction. We had no cone revenue and minimal seed revenue due to low bid pricing.
2.1 Ensure prompt and effective response to wildfires and other disasters in an increasingly complex environment													State Objective: Maintaining Safety, Integrity and Security	
2.1.1	Average Wildfire Response Time (minutes)	37.84	38	39.72	Acceptable Range	equal to or less than	State Fiscal Year (July 1 - June 30).	Time between initial report of wildfire and arrival of first firefighting unit	Agency Dispatch Records	Logisys FirstCall Computer-Aided Dispatch System (CADS), accessed by agency dispatch personnel, communication technicians and fire staff	Public safety	General public	0505.010000.000	

Perf. Measure Number	Description	Base	Target	Actual	Value Type	Desired Outcome	Time Applicable	Calculation Method	Data Source	Data Location	Stakeholder Need Satisfied	Primary Stakeholder	State Funded Program Number Responsible	Notes
2.1.2	Frontline Firefighting Dozers with enclosed cabs	80%	93%	93%	Percent	equal to or greater than	State Fiscal Year (July 1 - June 30).	Number of enclosed cabs divided by desired frontline fleet	Agency fleet records	Fleet360 Access database maintained and accessed in-house by the agency fleet manager.	Safety	General public, dozer operators	0505.010000.000	
2.1.3	Frontline Firefighting Dozers within 15-year service life	83%	93%	93%	Percent	equal to or greater than	State Fiscal Year (July 1 - June 30).	Number of bulldozers within 15-year service life divided by desired frontline fleet	Agency fleet records	Fleet360 Access database maintained and accessed in-house by the agency fleet manager.	Safety	General public, dozer operators	0505.010000.000	
2.2 Develop and deliver innovative prevention programs that reduce wildfire risks to forests and communities											State Objective: Maintaining Safety, Integrity and Security			
2.2.1	Wildfire Prevention Index	8.48	7.5	6.39	Rank	equal to or greater than	State Fiscal Year (July 1 - June 30).	This index rank is calculated as a weighted composite score with a minimum value of 1 and a maximum value of 10 incorporating the following metrics: acres of fuel mitigation treatments implemented by SCFC; number of new wildfire risk assessments completed for communities; ratio of prevention efforts to the number of wildfire causes 4 and 5 (escaped debris burns and arsons, respectively); and acres covered by Community Wildfire Protection Plans to improve wildfire risk	Agency records	These data are stored in a combination of places, including in Access databases on individual program managers' computers, the Southern Wildfire Risk Assessment (SouthWRAP) web application, and through the online geographic information system services provided by ArcGIS.	Safety	General public	0505.010000.000	While FY2024 saw a decrease in completed fuel mitigation projects and the acreage for completed landscape-scale CWPPs was low, several large projects are in progress, including county-wide Community Wildfire Protection Plans for Horry and Orangeburg counties. Successes during this period included Fire prevention staff engaging with hundreds of residents, including our inaugural SC Community Wildfire Preparedness Summit, with sessions held in Greenville and Myrtle Beach.
2.3 Deliver programs and services to prevent and reduce damage from insects, diseases, invasive species and other threats to our forests											State Objective: Maintaining Safety, Integrity and Security			
2.3.1	Forest Health Index	6.46	4	5.42	Rank	equal to or greater than	State Fiscal Year (July 1 - June 30).	This index rank is calculated as a weighted composite score with a minimum value of 1 and a maximum value of 10 incorporating the following metrics: Acres treated by SPB program; hours of training per attendee/in-house forest health training; number of people reached by forest health/prevention messages; percentage of state surveyed and number of site visits and calls answered.	Agency records	These data are stored in a combination of places, including in Excel spreadsheets and Access databases on individual program managers' computers, as well as through an online web application provided by the US Forest Service. Accessible by agency Forest Health staff.	Forest health	General public	0505.010000.000	
3.1 Support landowners with programs and services that promote active forest management and help them meet their goals											State Objective: Government and Citizens			

Perf. Measure Number	Description	Base	Target	Actual	Value Type	Desired Outcome	Time Applicable	Calculation Method	Data Source	Data Location	Stakeholder Need Satisfied	Primary Stakeholder	State Funded Program Number Responsible	Notes
3.1.1	Number of Landowners Assisted	1,886	2,000	1,776	Count	equal to or greater than	State Fiscal Year (July 1 - June 30).	Total number of forest landowners who receive assistance documented by a case file or other written record. A landowner is to be recorded only once during a fiscal year regardless of the number of times assisted.	SCFC 3209-1 Database	This data is stored on the SCFC server. The data is recorded by Project Foresters and entered into the database by regional staff.	Forest landowners need the assistance that is provided in order to make informed decisions regarding the management of their forestland.	Forest landowners	0505.010000.000	Although nearly all forester vacancies have now been filled, several foresters are inexperienced and have not reached full productivity yet.
3.1.2	Forest management assistance customer satisfaction level	97.10%	95%	95.10%	Percent	equal to or greater than	State Fiscal Year (July 1 - June 30).	Averaging of all survey responses from recipients of RFA and Stewardship plans, forestry services, and cost-share assistance	SCFC Survey	The Forest Management Section of SCFC calculates this data and houses it	This measure describes how well the agency is meeting the needs of one of its key customers.	Forest landowners	0505.010000.000	
3.1.3	Landowner Assistance Index	3.92	5	4.96	Rank	equal to or greater than	State Fiscal Year (July 1 - June 30).	This index rank is calculated as a weighted composite score with a minimum value of 1 and a maximum value of 10 incorporating the following metrics: Number of new or revised Forest Stewardship Plans in priority areas; percent of acres of Forest Stewardship Plans in priority areas; percent implementation of Stewardship plans; number of non-cost-share plans; number of cost-share plans; oldest FRP application (in days); and average time between FRP funding and completion	Agency records	The Forest Management Section of SCFC calculates this data and houses it	Forest landowners need the assistance that is provided in order to make informed decisions regarding the management of their forestland.	Forest landowners	0505.010000.000	Requests for cost-share forest management plans has decreased steadily since 2020.
3.2 Promote and increase the responsible use of prescribed fire														State Objective: Government and Citizens
3.2.1	Prescribed Fire Effort Index	3.83	4	5.18	Rank	equal to or greater than	State Fiscal Year (July 1 - June 30).	This index rank is calculated as a weighted composite score with a minimum value of 1 and a maximum value of 10 incorporating the following metrics: Total acres prescribed burned by all sources; percent of prescribed burns acres conducted by Certified Prescribed Fire Managers (CPFM); acres prescribed burned by SCFC under service contracts; acres prescribed burned on State Forests; percent of SCFC prescribed burn contract acres completed; acres of standby service delivered; contact hours of CPFM training provided	Agency records	Forest Protection and state forest staff provide this data. The Forest Management Section compiles and houses this data.	Reduced risk of wildfire	General public	0505.010000.000	
3.3 Demonstrate practices for the active, sustainable, multiple-use management of State Forests, and engage other public land owners to do the same														State Objective: Government and Citizens

Perf. Measure Number	Description	Base	Target	Actual	Value Type	Desired Outcome	Time Applicable	Calculation Method	Data Source	Data Location	Stakeholder Need Satisfied	Primary Stakeholder	State Funded Program Number Responsible	Notes
3.3.1	Public Lands Management Index	8.35	6	6.81	Rank	equal to or greater than	State Fiscal Year (July 1 - June 30).	This index rank is calculated as a weighted composite score with a minimum value of 1 and a maximum value of 10 incorporating the following metrics: net annual carryover; net cumulative carryover; percent of harvested acres goal attained; acres of pine straw sold; percent of threatened & endangered active red-cockaded woodpecker clusters growth attained, community involvement and landowner outreach (research and landowner demonstration); and other public lands consultation response	Agency records	State Lands Program Manager compiles this data and houses it	The need for active forest management on public lands to produce the full suite of benefits of forestry: economic, social and environmental.	General public	1010.000000.000	
3.4 Actively seek opportunities to acquire land to grow the State Forest system													State Objective: Government and Citizens	
3.4.1	Number of land acquisition projects evaluated	11	6	13	Count	equal to or greater than	State Fiscal Year (July 1 - June 30).	Sum of active land acquisition projects evaluated	Agency records	State Lands Program Manager compiles this data and houses it	The need to add land to the State Forest system to realize the full suite of benefits of forestry: economic, social and environmental.	General public	1010.000000.001	
3.5 Support landowners with programs and services that promote active forest management and help them meet their goals													State Objective: Government and Citizens	
3.5.1	Landowner services index	4.25	3.2	5.31	Count	equal to or greater than	State Fiscal Year (July 1 - June 30).	This index rank is calculated as a weighted composite score with a minimum value of 1 and a maximum value of 10 incorporating the following metrics: Percent service contracts completed, acres prescribed burned under service contracts, acres of standby service delivered, miles of firebreaks installed, number of water bars constructed, and total revenue from service activities	Agency records	Region staff provide this data and the Forest Management Section of SCFC calculates this data and houses it.	Forest landowners need the assistance that is provided in order to better manage their land for increased productivity and to meet their objectives.	Forest landowners.	1010.000000.001	
3.6 Support landowners with programs and services that promote active forest management and help them meet their goals													State Objective: Government and Citizens	
3.6.1	% of stewardship plan acres implemented in priority areas	35.20%	40%	37.20%	Percent	equal to or greater than	State Fiscal Year (July 1 - June 30).	Sum of stewardship plan acres	Agency records	The Forest Management Section of SCFC calculates this data and houses it.	Forest landowners need the assistance that is provided in order to make informed decisions regarding the management of their forestland.	Forest landowners.	1010.000000.000	Paying forestry consultants to write Forest Stewardship plans in priority areas has been quite successful. During FY24, consultants wrote 48 plans for \$15,277 acres and were paid \$91,095 for this work. New Stewardship guidelines implemented during FY22 reduced the number of priority acres in South Carolina, contributing to a lower percentage of acres implemented in priority areas. We will continue to promote consultant-written plans in an effort to improve this metric.
4.1 Promote the Forestry Commission as South Carolina's first and foremost source for forest management information and assistance													State Objective: Education, Training, and Human Development	

Perf. Measure Number	Description	Base	Target	Actual	Value Type	Desired Outcome	Time Applicable	Calculation Method	Data Source	Data Location	Stakeholder Need Satisfied	Primary Stakeholder	State Funded Program Number Responsible	Notes
4.1.1	Outreach Effort Index	9.45	4.5	8.53	Rank	equal to or greater than	State Fiscal Year (July 1 - June 30).	This index rank is calculated as a weighted composite score with a minimum value of 1 and a maximum value of 10 incorporating the following metrics: Number of PLT program participants reached through workshops; number of non-PLT forestry/conservation program participants reached by SCFC; number of publications produced; number of internal communication assists; number of external communication assists	Agency records	The component data for this index are stored in a variety of places, including on individual program managers' computers and in shared resources like Google Sheets/Docs	Awareness of forestry-related information and educational resources	General public	1511.000000.000	
4.1.2	Website Analytics Index	4.7	4	5.98	Acceptable range	Equal to or greater than	State fiscal year	This index rank is calculated as a weighted composite score with a minimum value of 1 and a maximum value of 10 incorporating the following metrics: Pageviews, users, sessions, social media referrals	Google Analytics	Google Analytics account dashboard	Awareness of forestry-related information, educational resources and agency operations	General public and agency employees	1511.000000.000	
4.1.3	Social Media Analytics Index	4.35	4	6.23	Acceptable range	equal to or greater than	State Fiscal Year (July 1 - June 30).	This index rank is calculated as a weighted composite score with a minimum value of 1 and a maximum value of 10 incorporating the following metrics: FACEBOOK – number of posts, follows, average daily reach, engagement rate, messenger response rate TWITTER – posts, engagements, follows, impressions YOUTUBE – subscribers, number of new videos, views, likes	Social media statistics	The component data for this index are stored in the respective reporting sections of the three social media platforms listed.	Awareness of forestry-related information and educational resources	General public	1511.000000.000	
4.2	Educate the public on the environmental benefits of working forests and the role of strong markets and family forest owners in keeping our forests healthy										State Objective: Education, Training, and Human Development			
4.2.1	Number of active certified PLT facilitators	36	40	51	Count	equal to or greater than	State Fiscal Year (July 1 - June 30).	Total active, certified Project Learning Tree facilitators in network	Agency records	These data are stored in an Excel file on the computer of the agency's Environmental Education Coordinator.	Awareness of forestry-related information and educational resources	School-age children who are exposed to Project Learning Tree curriculum by their teachers who are PLT-certified	1511.000000.000	
4.3	Provide accurate and timely information on the inventory, utilization, and health of South Carolina's forests										State Objective: Public Infrastructure and Economic Development			

Perf. Measure Number	Description	Base	Target	Actual	Value Type	Desired Outcome	Time Applicable	Calculation Method	Data Source	Data Location	Stakeholder Need Satisfied	Primary Stakeholder	State Funded Program Number Responsible	Notes
4.3.1	Forest Inventory and Analysis (FIA) plot production	515	572	468	Count	equal to or greater than	State Fiscal Year (July 1 - June 30).	Count of # plots completed	US Forest Service FIA Program	USDA FIA servers and SCFC FIA Program Manager computer.	Forest data trends for SC	Forest industry	0505.010000.000	The program fell short of its production goals this year due to loss of staff, vacancy fill time and understaffing. In the most recent legislative session, however, the program was awarded 2 FTEs for an additional FIA crew, along with operational funding, to increase production.
4.3.2	Forest Inventory and Analysis (FIA) Accuracy Scores (percent)	96%	95%	98.40%	Percent	equal to or greater than	Calendar Year (January 1 - December 31)	Average of individual QA/QC scores as reported by US Forest Service FIA	US Forest Service FIA Program	USDA FIA servers and SCFC FIA Program Manager computer.	Confidence in forest data for SC	Forest industry	0505.010000.000	
5.1 Prioritize safety across all agency operations													State Objective: Education, Training, and Human Development	
5.1.1	Lost-time incidents that resulted in day(s) away from work	3	2	83	Count	equal to or less than	State Fiscal Year (July 1 - June 30).	Secondary reporting from predetermined calculations	Claims Activity Report & Accord Form, Daily	This data is stored in SCEIS and accessed when necessary by appropriate Human Resources agency personnel.	Employee safety	Agency employees, general public	0100.000000.000	We had one injury that required multiple procedures and an extended recovery period, while another injury involved a strength issue, which took time for the employee to regain the necessary strength to safely return to work.
5.1.2	Work-related accidents/injuries	6	4	9	Count	equal to or less than	State Fiscal Year (July 1 - June 30).	Reported number of incidents	Claims Activity Report & OSHA Form 300, SCEIS leave records, Daily	This data is stored in SCEIS, agency records and is accessed when necessary by appropriate Human Resources agency personnel.	Safety	Agency employees	0100.000000.000	Work-related injuries were more frequent, but they were minor and did not result in any missed work time.
5.2 Develop and maintain a workforce that is inclusive, skilled, engaged and productive													State Objective: Education, Training, and Human Development	
5.2.1	Employee Engagement Index	7.53	7.53	7.83	Rank	equal to or greater than	State Fiscal Year (July 1 - June 30).	The index rank is calculated using a moving average of periodic employee engagement survey results keying on four indicators of employee engagement: employee pride in workplace, employee looks forward to work, employee willing to recommend working at the agency to friend, and employee belief that agency is a good place to work.	Employee engagement survey results and agency records	This data is stored on the computers of the contracted vendor and the State Forester.	An engaged, productive and efficient Forestry Commission workforce focused on protecting and serving the citizens of South Carolina.	General public and agency employees	0100.000000.000	
5.3 Closely monitor structure and staffing to ensure that the organization efficiently and effectively meets its mission as the future unfolds and conditions change													State Objective: Education, Training, and Human Development	
5.3.1	Turnover rate	11.86%	10%	8.40%	Percent	equal to or less than	State Fiscal Year (July 1 - June 30).	Number of separations during a month divided by the average number of employees during that same time period, multiplied by 100.	PEBA database; SCEIS; personnel files	This data is stored in SCEIS, PEBA database and in agency records, and is accessed when necessary by appropriate Human Resources agency personnel.	Productivity, efficiency	Agency employees	0100.000000.000	
5.4 Promote careers in forestry													State Objective: Education, Training, and Human Development	

Perf. Measure Number	Description	Base	Target	Actual	Value Type	Desired Outcome	Time Applicable	Calculation Method	Data Source	Data Location	Stakeholder Need Satisfied	Primary Stakeholder	State Funded Program Number Responsible	Notes
5.4.1	Number of qualified candidates per forestry job posting		4	4	12.53	Count	equal to or greater than	State Fiscal Year (July 1 - June 30). The sum of the number of qualified candidates screened for forestry positions divided by the total number of forestry positions posted	Agency records	This data is stored in the NeoGov database provided by DSHR and on the computer of appropriate HR personnel in the agency.	Agency effectiveness and productivity	Agency	0100.000000.000	
5.5 Deliver programs and services that retain, develop and expand sustainable timber and non-timber markets													State Objective: Education, Training, and Human Development	
5.5.1	% of technology spending to run/transform the agency	44.97%	40%	32.50%	Percent	equal to or greater than	State Fiscal Year (July 1 - June 30).	Percent service contracts completed, acres prescribed burned under service contracts, acres of standby service delivered, miles of firebreaks installed, number of water bars constructed, and total revenue from service activities	Agency records	This data is stored on SCFC internal reports, quarterly.	Agency effectiveness and productivity	Agency	0100.000000.000	Transformative spending this year was for LE body cams, fire detection cameras and CADS replacement. In recent years, we successfully met our 40 % target thanks to substantial one-time funding initiatives. This year, however, we faced increased day-to-day expenditures and fewer large-scale projects. We are developing plans for this year's transformative projects, considering the challenges of available funding and the effects of increased prices on our day-to-day operating expenses.

FY2025

Strategic Plan Development

as submitted for the Accountability Report by:
P120 - Forestry Commission

- Goal 1** Enhance Public Benefits From Trees And Forests
- Goal 2** Protect Forests From Harm
- Goal 3** Conserve Working Forests
- Goal 4** Raise Awareness About Our Forests
- Goal 5** Strengthen The Commission For The Future

Perf. Measure Number	Description	Base	Target	Value Type	Desired Outcome	Time Applicable	Calculation Method	Data Source	Data Location	Stakeholder Need Satisfied	Primary Stakeholder	State Funded Program Number Responsible	Notes
1.1 Promote programs and practices that safeguard South Carolina's water, air, soil, wildlife habitat, recreation and natural beauty. State Objective: Public Infrastructure and Economic Development													
1.1.1	Forest ecosystem benefits index	6.74	6.76	Rank	equal to or greater than	State Fiscal Year (July 1 - June 30).	This index rank is calculated as a weighted composite score with a minimum value of 1 and a maximum value of 10 incorporating the following metrics: Percent BMP compliance rate from Courtesy Exams; percent BMP compliance rate from BMP Monitoring; number of BMP Courtesy Exam and BMP monitoring site visits; contact hours of BMP/TOP programs delivered; number of active ecosystem service projects	Agency records	These data are stored on BMP Program Manager computers.	Water quality is adequately protected for downstream water users when index score is high.	The primary stakeholders are downstream water intakes and recreational water users.	0505.010000.000	
1.2 Deliver programs and services that retain, develop and expand sustainable timber and non-timber markets State Objective: Public Infrastructure and Economic Development													
1.2.1	Announced capital investment in forestry (millions \$)	\$ 124	\$ 250	Dollar Amount	equal to or greater than	State Fiscal Year (July 1 - June 30).	Sum of \$ capital investment announced	SC Forestry Commission (SCFC) and SC Department of Commerce (SCDOC) Records	These data are stored on Resource Development Division computers.	Forest landowners benefit from the announcement of new forest product markets as there is more demand for their wood.	All forest landowners benefit from additional markets.	0505.010000.000	
1.2.2	Announced new job creation in forestry	500	250	Count	equal to or greater than	State Fiscal Year (July 1 - June 30).	Sum of # new jobs announced	SCFC and SCDOC Records	These data are stored on Resource Development Division computers.	The South Carolina workforce benefits when forest product announcements create jobs.	The South Carolina workforce, including loggers.	0505.010000.000	
1.2.3	Industry Timber Production and Consumption (thousand cubic feet)	880,000	800,000	Count	equal to or greater than	Calendar Year (January 1 - December 31)	Data derived from TPO survey	US Forest Service Timber Products Output (TPO) Program	The individual mill data resides on SCFC and USDA FIA computers.	Forest industry is the primary user of TPO data to gauge the health and sustainability of the industry.	Forest industry.	0505.010000.000	
1.2.4	Forest markets development index	6.25	6	Rank	equal to or greater than	State Fiscal Year (July 1 - June 30).	This index rank is calculated as a weighted composite score with a minimum value of 1 and a maximum value of 10 incorporating the following metrics: Number of agency-led trade events; number of active economic development projects; number of business assists; number of market-related publications; and percent of TPO surveys completed	Agency records	These data are housed on Resource Development program computers.	Retaining and growing markets for forest products	Forest industry.	0505.010000.000	

Perf. Measure Number	Description	Base	Target	Value Type	Desired Outcome	Time Applicable	Calculation Method	Data Source	Data Location	Stakeholder Need Satisfied	Primary Stakeholder	State Funded Program Number Responsible	Notes
1.3 Engage communities to grow and sustain healthy trees and forests													State Objective: Public Infrastructure and Economic Development
1.3.1	Community Forestry Index	7.11		5 Rank	equal to or greater than	State Fiscal Year (July 1 - June 30).	This index rank is calculated as a weighted composite score with a minimum value of 1 and a maximum value of 10 incorporating the following metrics: Number of people served; number of annual Tree City USA designations; contact hours delivered on urban forestry topics; contact hours delivered specific to community and county planning	Agency records	Federal CARS database, Urban Forestry Coordinator's records, Arbor Day Foundation	Ecosystem benefits of trees	Urban and suburban residents	0505.010000.000	
1.4 Engage in tree improvement to improve the health and productive capacity of our forests													State Objective: Public Infrastructure and Economic Development
1.4.1	Nursery & Tree Improvement Index	5.87		5 Rank	equal to or greater than	State Fiscal Year (July 1 - June 30).	This index rank is calculated as a weighted composite score with a minimum value of 1 and a maximum value of 10 incorporating the following metrics: Nursery and Tree Improvement total revenue; bushels of improved cones harvested; percent of seedling quota sold annually; PRS composite score of seed sold; number of active progeny tests	Agency records	These data are stored on N&TI Program Manager computers.	High quality seedlings are available to SC landowners at competitive prices.	Forest landowners in SC.	0505.010000.000	
2.1 Ensure prompt and effective response to wildfires and other disasters in an increasingly complex environment													State Objective: Maintaining Safety, Integrity and Security
2.1.1	Average Wildfire Response Time (minutes)	37.84	38	Acceptable Range	equal to or less than	State Fiscal Year (July 1 - June 30).	Time between initial report of wildfire and arrival of first firefighting unit	Agency Dispatch Records	Logisys FirstCall Computer-Aided Dispatch System (CADS), accessed by agency dispatch personnel, communication technicians and fire staff	Public safety	General public	0505.010000.000	
2.1.2	Frontline Firefighting Dozers with enclosed cabs	80%	100%	Percent	equal to or greater than	State Fiscal Year (July 1 - June 30).	Number of enclosed cabs divided by desired frontline fleet	Agency fleet records	Fleet360 Access database maintained and accessed in-house by the agency fleet manager.	Safety	General public, dozer operators	0505.010000.000	
2.1.3	Frontline Firefighting Dozers within 15-year service life	83%	100%	Percent	equal to or greater than	State Fiscal Year (July 1 - June 30).	Number of bulldozers within 15 year service life divided by desired frontline fleet	Agency fleet records	Fleet360 Access database maintained and accessed in-house by the agency fleet manager.	Safety	General public, dozer operators	0505.010000.000	
2.2 Develop and deliver innovative prevention programs that reduce wildfire risks to forests and communities													State Objective: Maintaining Safety, Integrity and Security

Perf. Measure Number	Description	Base	Target	Value Type	Desired Outcome	Time Applicable	Calculation Method	Data Source	Data Location	Stakeholder Need Satisfied	Primary Stakeholder	State Funded Program Number Responsible	Notes
2.2.1	Wildfire Prevention Index	8.48	7.5	Rank	equal to or greater than	State Fiscal Year (July 1 - June 30).	This index rank is calculated as a weighted composite score with a minimum value of 1 and a maximum value of 10 incorporating the following metrics: acres of fuel mitigation treatments implemented by SCFC; number of new wildfire risk assessments completed for communities; ratio of prevention efforts to the number of wildfire causes 4 and 5 (escaped debris burns and arsons, respectively); and acres covered by Community Wildfire Protection Plans to improve wildfire risk	Agency records	These data are stored in a combination of places, including in Access databases on individual program managers' computers, the Southern Wildfire Risk Assessment (SouthWRAP) web application, and through the online geographic information system services provided by ArcGIS.	Safety	General public	0505.010000.000	
2.3 Deliver programs and services to prevent and reduce damage from insects, diseases, invasive species and other threats to our forests										State Objective: Maintaining Safety, Integrity and Security			
2.3.1	Forest Health Index	6.46	4	Rank	equal to or greater than	State Fiscal Year (July 1 - June 30).	This index rank is calculated as a weighted composite score with a minimum value of 1 and a maximum value of 10 incorporating the following metrics: Acres treated by SPB program; hours of training per attendee/in-house forest health training; number of people reached by forest health/prevention messages; percentage of state surveyed and number of site visits and calls answered.	Agency records	These data are stored in a combination of places, including in Excel spreadsheets and Access databases on individual program managers' computers, as well as through an online web application provided by the US Forest Service. Accessible by agency Forest Health staff.	Forest health	General public	0505.010000.000	
3.1 Support landowners with programs and services that promote active forest management and help them meet their goals										State Objective: Government and Citizens			
3.1.1	Number of Landowners Assisted	1,886	2,000	Count	equal to or greater than	State Fiscal Year (July 1 - June 30).	Total number of forest landowners who receive assistance documented by a case file or other written record. A landowner is to be recorded only once during a fiscal year regardless of the number of times assisted.	SCFC 3209-1 Database	This data is stored on the SCFC server. The data is recorded by Project Foresters and entered into the database by regional staff.	Forest landowners need the assistance that is provided in order to make informed decisions regarding the management of their forestland.	Forest landowners	0505.010000.000	
3.1.2	Forest management assistance customer satisfaction level	97.10%	95%	Percent	equal to or greater than	State Fiscal Year (July 1 - June 30).	Averaging of all survey responses from recipients of RFA and Stewardship plans, forestry services, and cost-share assistance	SCFC Survey	The Forest Management Section of SCFC calculates this data and houses it	This measure describes how well the agency is meeting the needs of one of its key customers.	Forest landowners	0505.010000.000	

Perf. Measure Number	Description	Base	Target	Value Type	Desired Outcome	Time Applicable	Calculation Method	Data Source	Data Location	Stakeholder Need Satisfied	Primary Stakeholder	State Funded Program Number Responsible	Notes
3.1.3	Landowner Assistance Index		3.92	5 Rank	equal to or greater than	State Fiscal Year (July 1 - June 30).	This index rank is calculated as a weighted composite score with a minimum value of 1 and a maximum value of 10 incorporating the following metrics: Number of new or revised Forest Stewardship Plans in priority areas; percent of acres of Forest Stewardship Plans in priority areas; percent implementation of Stewardship plans; number of non-cost-share plans; number of cost-share plans; oldest FRP application (in days); and average time between FRP funding and completion	Agency records	The Forest Management Section of SCFC calculates this data and houses it	Forest landowners need the assistance that is provided in order to make informed decisions regarding the management of their forestland.	Forest landowners	0505.010000.000	
3.2 Promote and increase the responsible use of prescribed fire												State Objective: Government and Citizens	
3.2.1	Prescribed Fire Effort Index		3.83	4 Rank	equal to or greater than	State Fiscal Year (July 1 - June 30).	This index rank is calculated as a weighted composite score with a minimum value of 1 and a maximum value of 10 incorporating the following metrics: Total acres prescribed burned by all sources; percent of prescribed burns acres conducted by Certified Prescribed Fire Managers (CPFM); acres prescribed burned by SCFC under service contracts; acres prescribed burned on State Forests; percent of SCFC prescribed burn contract acres completed; acres of standby service delivered; contact hours of CPFM training provided	Agency records	Forest Protection and state forest staff provide this data. The Forest Management Section compiles and houses this data.	Reduced risk of wildfire	General public	0505.010000.000	
3.3 Demonstrate practices for the active, sustainable, multiple-use management of State Forests, and engage other public land owners to do the same												State Objective: Government and Citizens	
3.3.1	Public Lands Management Index		8.35	6 Rank	equal to or greater than	State Fiscal Year (July 1 - June 30).	This index rank is calculated as a weighted composite score with a minimum value of 1 and a maximum value of 10 incorporating the following metrics: net annual carryover; net cumulative carryover; percent of harvested acres goal attained; acres of pine straw sold; percent of threatened & endangered active red-cockaded woodpecker clusters growth attained; community involvement and landowner outreach (research and landowner demonstration); and other public lands consultation response	Agency records	State Lands Program Manager compiles this data and houses it	The need for active forest management on public lands to produce the full suite of benefits of forestry: economic, social and environmental.	General public	1010.000000.000	
3.4 Actively seek opportunities to acquire land to grow the State Forest system												State Objective: Government and Citizens	

Perf. Measure Number	Description	Base	Target	Value Type	Desired Outcome	Time Applicable	Calculation Method	Data Source	Data Location	Stakeholder Need Satisfied	Primary Stakeholder	State Funded Program Number Responsible	Notes
3.4.1	Number of land acquisition projects evaluated		11	6	Count	equal to or greater than	State Fiscal Year (July 1 - June 30). Sum of active land acquisition projects evaluated	Agency records	State Lands Program Manager compiles this data and houses it	The need to add land to the State Forest system to realize the full suite of benefits of forestry: economic, social and environmental.	General public	1010.000000.001	
3.5 Support landowners with programs and services that promote active forest management and help them meet their goals										State Objective: Government and Citizens			
3.5.1	Landowner services index		4.25	3.2	Count	equal to or greater than	State Fiscal Year (July 1 - June 30). This index rank is calculated as a weighted composite score with a minimum value of 1 and a maximum value of 10 incorporating the following metrics: Percent service contracts completed, acres prescribed burned under service contracts, acres of standby service delivered, miles of firebreaks installed, number of water bars constructed, and total revenue from service activities	Agency records	Region staff provide this data and the Forest Management Section of SCFC calculates this data and houses it.	Forest landowners need the assistance that is provided in order to better manage their land for increased productivity and to meet their objectives.	Forest landowners.	1010.000000.001	
3.6 Support landowners with programs and services that promote active forest management and help them meet their goals										State Objective: Government and Citizens			
3.6.1	% of stewardship plan acres implemented in priority areas		35.20%	40%	Percent	equal to or greater than	State Fiscal Year (July 1 - June 30). Sum of stewardship plan acres	Agency records	The Forest Management Section of SCFC calculates this data and houses it.	Forest landowners need the assistance that is provided in order to make informed decisions regarding the management of their forestland.	Forest landowners.	1010.000000.000	
4.1 Promote the Forestry Commission as South Carolina's first and foremost source for forest management information and assistance										State Objective: Education, Training, and Human Development			
4.1.1	Outreach Effort Index		9.45	5	Rank	equal to or greater than	State Fiscal Year (July 1 - June 30). This index rank is calculated as a weighted composite score with a minimum value of 1 and a maximum value of 10 incorporating the following metrics: Number of PLT program participants reached through workshops; number of non-PLT forestry/conservation program participants reached by SCFC; number of publications produced; number of internal communication assists; number of external communication assists	Agency records	The component data for this index are stored in a variety of places, including on individual program managers' computers and in shared resources like Google Sheets/Docs	Awareness of forestry-related information and educational resources	General public	1511.000000.000	
4.1.2	Website Analytics Index	N/A		4.5	Acceptable range	Equal to or greater than	State fiscal year This index rank is calculated as a weighted composite score with a minimum value of 1 and a maximum value of 10 incorporating the following metrics: Pageviews, users, sessions, social media referrals	Google Analytics	Google Analytics account dashboard	Awareness of forestry-related information, educational resources and agency operations	General public and agency employees	1511.000000.000	

Perf. Measure Number	Description	Base	Target	Value Type	Desired Outcome	Time Applicable	Calculation Method	Data Source	Data Location	Stakeholder Need Satisfied	Primary Stakeholder	State Funded Program Number Responsible	Notes
4.1.3	Social Media Analytics Index		4.35	4.5	Acceptable range	equal to or greater than	State Fiscal Year (July 1 - June 30). This index rank is calculated as a weighted composite score with a minimum value of 1 and a maximum value of 10 incorporating the following metrics: FACEBOOK – number of posts, follows, average daily reach, engagement rate, messenger response rate TWITTER – posts, engagements, follows, impressions YOUTUBE – subscribers, number of new videos, views, likes	Social media statistics	The component data for this index are stored in the respective reporting sections of the three social media platforms listed.	Awareness of forestry-related information and educational resources	General public	1511.000000.000	
4.2 Educate the public on the environmental benefits of working forests and the role of strong markets and family forest owners in keeping our forests healthy										State Objective: Education, Training, and Human Development			
4.2.1	Number of active certified PLT facilitators		36	40	Count	equal to or greater than	State Fiscal Year (July 1 - June 30). Total active, certified Project Learning Tree facilitators in network	Agency records	These data are stored in an Excel file on the computer of the agency's Environmental Education Coordinator.	Awareness of forestry-related information and educational resources	School-age children who are exposed to Project Learning Tree curriculum by their teachers who are PLT-certified	1511.000000.000	
4.3 Provide accurate and timely information on the inventory, utilization, and health of South Carolina's forests										State Objective: Public Infrastructure and Economic Development			
4.3.1	Forest Inventory and Analysis (FIA) plot production		515	572	Count	equal to or greater than	State Fiscal Year (July 1 - June 30). Count of # plots completed	US Forest Service FIA Program	USDA FIA servers and SCFC FIA Program Manager computer.	Forest data trends for SC	Forest industry	0505.010000.000	
4.3.2	Forest Inventory and Analysis (FIA) Accuracy Scores (percent)		96%	95%	Percent	equal to or greater than	Calendar Year (January 1 - December 31). Average of individual QA/QC scores as reported by US Forest Service FIA	US Forest Service FIA Program	USDA FIA servers and SCFC FIA Program Manager computer.	Confidence in forest data for SC	Forest industry	0505.010000.000	
5.1 Prioritize safety across all agency operations										State Objective: Education, Training, and Human Development			
5.1.1	Lost-time incidents that resulted in day(s) away from work		3	2	Count	equal to or less than	State Fiscal Year (July 1 - June 30). Secondary reporting from predetermined calculations	Claims Activity Report & Accord Form, Daily	This data is stored in SCEIS and accessed when necessary by appropriate Human Resources agency personnel.	Employee safety	Agency employees, general public	0100.000000.000	
5.1.2	Work-related accidents/injuries		6	4	Count	equal to or less than	State Fiscal Year (July 1 - June 30). Reported number of incidents	Claims Activity Report & OSHA Form 300, SCEIS leave records, Daily	This data is stored in SCEIS, agency records and is accessed when necessary by appropriate Human Resources agency personnel.	Safety	Agency employees	0100.000000.000	
5.2 Develop and maintain a workforce that is inclusive, skilled, engaged and productive										State Objective: Education, Training, and Human Development			

Perf. Measure Number	Description	Base	Target	Value Type	Desired Outcome	Time Applicable	Calculation Method	Data Source	Data Location	Stakeholder Need Satisfied	Primary Stakeholder	State Funded Program Number Responsible	Notes
5.2.1	Employee Engagement Index	7.83	7.53	Rank	equal to or greater than	State Fiscal Year (July 1 - June 30).	The index rank is calculated using a moving average of periodic employee engagement survey results keying on four indicators of employee engagement: employee pride in workplace, employee looks forward to work, employee willing to recommend working at the agency to friend, and employee belief that agency is a good place to work.	Employee engagement survey results and agency records	This data is stored on the computers of the contracted vendor and the State Forester.	An engaged, productive and efficient Forestry Commission workforce focused on protecting and serving the citizens of South Carolina.	General public and agency employees	0100.000000.000	
5.3 Closely monitor structure and staffing to ensure that the organization efficiently and effectively meets its mission as the future unfolds and conditions change										State Objective: Education, Training, and Human Development			
5.3.1	Turnover rate	11.86%	10%	Percent	equal to or less than	State Fiscal Year (July 1 - June 30).	Number of separations during a month divided by the average number of employees during that same time period, multiplied by 100.	PEBA database; SCEIS; personnel files	This data is stored in SCEIS, PEBA database and in agency records, and is accessed when necessary by appropriate Human Resources agency personnel.	Productivity, efficiency	Agency employees	0100.000000.000	
5.4 Promote careers in forestry										State Objective: Education, Training, and Human Development			
5.4.1	Number of qualified candidates per forestry job posting	4	4	Count	equal to or greater than	State Fiscal Year (July 1 - June 30).	The sum of the number of qualified candidates screened for forestry positions divided by the total number of forestry positions posted	Agency records	This data is stored in the NeoGov database provided by DSHR and on the computer of appropriate HR personnel in the agency.	Agency effectiveness and productivity	Agency	0100.000000.000	
5.5 Deliver programs and services that retain, develop and expand sustainable timber and non-timber markets										State Objective: Education, Training, and Human Development			
5.5.1	% of technology spending to run/transform the agency	44.97%	40%	Percent	equal to or greater than	State Fiscal Year (July 1 - June 30).	Percent service contracts completed, acres prescribed burned under service contracts, acres of standby service delivered, miles of firebreaks installed, number of water bars constructed, and total revenue from service activities	Agency records	This data is stored on SCFC internal reports, quarterly.	Agency effectiveness and productivity	Agency	0100.000000.000	

2024

Budget Data

as submitted for the Accountability Report by:

P120 - Forestry Commission

State Funded Program No.	State Funded Program Title	Description of State Funded Program	(Actual) General	(Actual) Other	(Actual) Federal	(Actual) Total	(Projected) General	(Projected) Other	(Projected) Federal	(Projected) Total
0100.000000.000	Administration	Administration	\$ 1,213,374.16	\$ -	\$ -	\$ 1,213,374.16	\$ 1,083,607.00	\$ -	\$ -	\$ 1,083,607.00
0501.200000X000	Forest Renewal Program	Forest Renewal Program	\$ 200,000.00	\$ 738,909.00	\$ -	\$ 938,909.00	\$ 200,000.00	\$ 800,000.00	\$ -	\$ 1,000,000.00
0505.010000.000	Forest Protection and Development	Forest Protection and Development	\$ 22,350,021.92	\$ 2,674,641.75	\$ 4,543,353.93	\$ 29,568,017.60	\$ 22,538,817.00	\$ 7,096,000.00	\$ 8,228,560.00	\$ 37,863,377.00
1010.000000.000	State Forests	State Forests	\$ 45,429.40	\$ 3,000,908.04	\$ -	\$ 3,046,337.44	\$ 100,000.00	\$ 3,272,713.00	\$ -	\$ 3,372,713.00
1511.000000.000	Education	Education	\$ 508,782.02	\$ 7,020.08	\$ -	\$ 515,802.10	\$ 310,725.00	\$ -	\$ -	\$ 310,725.00
9500.050000.000	State Employer Contributions	State Employer Contributions	\$ 7,902,919.73	\$ 559,340.66	\$ 419,413.86	\$ 8,881,674.25	\$ 9,426,869.00	\$ 510,000.00	\$ 435,000.00	\$ 10,371,869.00
9801.050000.000	Operating Expenses	Operating Expenses	\$ -	\$ 16,992.90	\$ -	\$ 16,992.90	\$ 3,500,000.00	\$ -	\$ -	\$ 3,500,000.00
9804.040000X000	Firefighting Equipment	Firefighting Equipment	\$ 2,584,458.00	\$ -	\$ -	\$ 2,584,458.00	\$ 440,542.00	\$ -	\$ -	\$ 440,542.00
9828.020000X000	State Investigation Reimbursement	State Investigation Reimbursement	\$ -	\$ -	\$ -	\$ -	\$ 97,271.53	\$ -	\$ -	\$ 97,271.53
9906.960300.000	Wee Tee Forest Project	Wee Tee Forest Project	\$ -	\$ 704,625.00	\$ -	\$ 704,625.00	\$ -	\$ 3,799,992.00	\$ -	\$ 3,799,992.00

2024

Legal Data

as submitted for the Accountability Report by:

P120 - Forestry Commission

Law number	Jurisdiction	Type	Description	Purpose the law serves:	Notes:	Changes made during FY2024
33 U.S.C. Section 1251-1387: Clean Water Act	Federal	Statute	Primary federal law governing water pollution. Administered in SC by DHEC, this law governs forest management activities in wetlands, road construction, and impacts to water quality. The SC Forestry Commission administers South Carolina's Best Management Practices for Forestry through an MOU with SCDHEC.	Requires a service	Primary federal law governing water pollution. Administered in SC by DHEC, this law governs forest management activities in wetlands, road construction, and impacts to water quality. The SC Forestry Commission administers South Carolina's Best Management Practices for Forestry through an MOU with SCDHEC.	No Change
42 U.S.C. Section 5191: Stafford Disaster Relief and Emergency Assistance Act	Federal	Statute	Allows the Federal Government to provide assistance to state government to relieve hardship and damage that occur from disasters. Provides access to grants and severity funds after disasters.	Requires a service	Allows the Federal Government to provide assistance to state government to relieve hardship and damage that occur from disasters. Provides access to grants and severity funds after disasters.	No Change
42 U.S.C. Section Chapter 85, Section 7401: Clean Air Act	Federal	Statute	Designed to control air pollution on a national level. Administered in SC by DHEC, this law impacts wildfire suppression, prescribed burning, and forest management. The SC Forestry Commission and DHEC jointly administer South Carolina's Smoke Management Guidelines.	Requires a service		No Change
48-23-20	State	Statute	Establishes the terms of office of the members of the commission.	Not related to agency deliverable		No Change
48-23-30	State	Statute	Establishes the process for selecting a chairman and defines the chair's roles and responsibilities.	Not related to agency deliverable		No Change
48-23-40	State	Statute	Establishes the authority to pay commissioners' expenses while acting on behalf of commission.	Not related to agency deliverable		No Change
48-23-50	State	Statute	Establishes the appointment, qualifications and duties of the State Forester.	Not related to agency deliverable		No Change

Law number	Jurisdiction	Type	Description	Purpose the law serves:	Notes:	Changes made during FY2024
48-23-60	State	Statute	Establishes that the State Forester is the secretary to the commission.	Not related to agency deliverable		No Change
48-23-80	State	Statute	Establishes the general powers of the commission.	Not related to agency deliverable		No Change
48-23-85	State	Statute	Establishes the power of the commission to negotiate agreements with federal agencies for certain services on federal lands.	Not related to agency deliverable		No Change
48-23-86	State	Statute	Establishes the duties of State Forester and Forestry Commission with respect to forest disasters; development of Forest Disaster Plan.	Requires a service	The Forestry Commission shall also assist other state agencies, utility companies and cooperatives, in the clearing of transportation routes, and power and communication lines.	No Change
48-23-96	State	Statute	Establishes the appointment of officers to carry out law enforcement responsibilities of commission; terms; removal.	Not related to agency deliverable	H.3541, passed during FY21, provides SCFC officers the authority to issue warning tickets.	No Change
48-23-96	State	Statute	Section 48-23-96 of the 1976 Code was amended to provide SCFC law enforcement officers the authority to issue warning tickets.	Not related to agency deliverable		No Change
48-23-97	State	Statute	Establishes that wood load tickets are required for certain ticket sales; exceptions; penalties	Not related to agency deliverable		No Change
48-28-100	State	Statute	Establishes the Forest Renewal Fund.	Requires a service	There is created in the Commission the forest renewal fund for which fiscal management and responsibility is vested in the State Forester.	No Change

Law number	Jurisdiction	Type	Description	Purpose the law serves:	Notes:	Changes made during FY2024
48-28-20	State	Statute	Establishes the powers and duties of the State Forester in connection with implementation of forest renewal program.	Requires a service	The State Forester shall implement a forest renewal program to encourage private investments in the improved management of forest lands and resources within the State to ensure adequate future high quality timber supplies, related employment and other economic benefits and the protection, maintenance and enhancement of a productive and stable forest resource system.	No Change
48-28-30	State	Statute	Definitions of terms related to cost-sharing practices and procedures.	Not related to agency deliverable		No Change
48-28-40	State	Statute	Promulgation of rules and regulations; employment and compensation of support personnel; purchase and use of equipment.	Not related to agency deliverable		No Change
48-28-50	State	Statute	Establishes the powers and duties of the State Forester in connection with administration of cost-sharing provisions.	Not related to agency deliverable		No Change
48-28-60	State	Statute	Establishes rate of cost-sharing payments; maximum payments to eligible landowners; exclusion of land for which federal cost-sharing payments are received.	Not related to agency deliverable		No Change
48-28-70	State	Statute	No limitation on woodland acreage of eligible landowner.	Not related to agency deliverable		No Change
48-28-80	State	Statute	Landowners required to submit forest management plan and maintain land in forest condition.	Not related to agency deliverable		No Change
48-28-90	State	Statute	Governmental agencies ineligible for forest renewal payments.	Not related to agency deliverable		No Change
48-30-20	State	Statute	Creates an assessment on primary forest products processed from South Carolina timber to provide a source of funds to finance the operations provided for in Chapter 18	Not related to agency deliverable		No Change

Law number	Jurisdiction	Type	Description	Purpose the law serves:	Notes:	Changes made during FY2024
48-30-30	State	Statute	Provides definitions for the Primary Forest Product Assessment Law.	Not related to agency deliverable		No Change
48-30-40	State	Statute	Defines assessment on primary forest products; conditions for suspension of assessment.	Not related to agency deliverable		No Change
48-30-50	State	Statute	Provides for collection of assessment by Department of Revenue; information and assistance to be provided by State Forester; reimbursement of department for collection costs.	Not related to agency deliverable		No Change
48-30-60	State	Statute	Establishes assessment rates.	Not related to agency deliverable		No Change
48-30-70	State	Statute	Establishes time and manner of payment of assessments; processors to maintain production records for assessment purposes; confidentiality of records.	Not related to agency deliverable		No Change
48-30-80	State	Statute	Establishes for the enforcement of primary forest product assessment.	Not related to agency deliverable		No Change
48-33-20	State	Statute	Defines "forest land."	Not related to agency deliverable		No Change
48-33-30	State	Statute	Defines "forest fire."	Not related to agency deliverable		No Change
48-33-40	State	Statute	Authorizes the State Commission of Forestry to direct forest fire protection work.	Requires a service	All forest fire protection work shall be under the direction and supervision of the State Commission of Forestry, through the State Forester, subject to the provisions of this chapter and the laws of the State enacted relative to forestry and forest fire prevention and suppression.	No Change
48-33-50	State	Statute	Establishes the creation of county forestry boards.	Not related to agency deliverable		No Change

Law number	Jurisdiction	Type	Description	Purpose the law serves:	Notes:	Changes made during FY2024
48-33-60	State	Statute	Establishes duties and powers of county forestry boards; employees.	Not related to agency deliverable		No Change
48-33-70	State	Statute	Establishes plans for forest fire protection; rules and regulations for administration of plans.	Requires a service	The State Commission of Forestry shall prepare for each county forestry board a plan for forest fire protection for the fiscal year and present such plan at the July meeting of the board. It shall have power to make and enforce all rules and regulations necessary for the administration of forest fire protection.	No Change
48-33-80	State	Statute	Authorizes access to property by authorized agency personnel and county forestry board members	Not related to agency deliverable		No Change
48-33-90	State	Statute	Establishes title to property acquired vested in State Commission of Forestry.	Not related to agency deliverable		No Change
48-34-20	State	Statute	Establishes definitions for the South Carolina Prescribed Fire Act.	Not related to agency deliverable		No Change
48-34-30	State	Statute	Establishes authority to promulgate regulations.	Requires a service	The State Commission of Forestry shall promulgate regulations for the use of prescribed fire and for the certification of prescribed fire managers.	No Change
48-34-40	State	Statute	Establishes requirements for conducting prescribed fire; South Carolina Smoke Management Guidelines.	Not related to agency deliverable		No Change
48-34-50	State	Statute	Addresses liability for damages, injury, or loss caused by prescribed fire.	Not related to agency deliverable		No Change
48-34-60	State	Statute	Establishes that a person may conduct a prescribed fire without a certified prescribed fire manager present.	Not related to agency deliverable		No Change

Law number	Jurisdiction	Type	Description	Purpose the law serves:	Notes:	Changes made during FY2024
48-35-20	State	Statute	Establishes that authorization must be obtained from landowner to conduct burning.	Not related to agency deliverable		No Change
48-35-30	State	Statute	Establishes that this chapter is inapplicable to fires within municipalities.	Not related to agency deliverable		No Change
48-35-40	State	Statute	Establishes that a person may conduct a prescribed fire without a certified prescribed fire manager present.	Not related to agency deliverable		No Change
48-35-50	State	Statute	Establishes that the State Forester may prohibit fires.	Requires a service	The State Forester may direct at any time, when deemed necessary in the interest of public safety, that fires covered by this chapter not be started.	No Change
48-35-55	State	Statute	Exempts portable outdoor fireplaces and permanently constructed fire pits from requirements of this chapter.	Not related to agency deliverable		No Change
48-35-55	State	Statute	Chapter 35, Title 48 of the 1976 Code was amended by adding section 48-35-55, which exempts portable outdoor fireplaces and permanently constructed fire pits from requirements of this chapter.	Not related to agency deliverable		No Change
48-35-60	State	Statute	Defines penalties for violating provisions of this chapter.	Not related to agency deliverable		No Change
48-36-20	State	Statute	Establishes definitions for the South Carolina Forest Best Management Practices Act.	Not related to agency deliverable		No Change
48-36-30	State	Statute	Establishes that the State Commission of Forestry is the designated agency in South Carolina to provide public oversight and guidance for technical forest management practices and related activities in laws pertaining to forest lands.	Requires a service	The commission shall establish Best Management Practices, related monitoring programs, and other programs to assure that forestry practices are in compliance with state and federal regulations.	No Change

Law number	Jurisdiction	Type	Description	Purpose the law serves:	Notes:	Changes made during FY2024
48-37-20	State	Statute	Establishes terms of the Southeastern Interstate Forest Fire Protection Compact.	Not related to agency deliverable		No Change
48-37-30	State	Statute	Establishes the effective date of the Southeastern Interstate Forest Fire Protection Compact.	Not related to agency deliverable		No Change
48-37-40	State	Statute	Establishes that the State Forester acts as compact administrator; advisory committee of Southeastern Interstate Forest Fire Protection Compact.	Requires a service	State Forester to act as compact administrator; advisory committee of Southeastern Interstate Forest Fire Protection Compact.	No Change
48-37-50	State	Statute	Establishes the powers and duties of State Forester and advisory committee as part of the compact.	Requires a service	There is hereby granted to the State Forester ... all the powers provided for in the compact and all the powers necessary or incidental to the carrying out of such compact in every particular.	No Change
48-37-60	State	Statute	Establishes that this chapter does not limit the powers of the State Commission of Forestry.	Not related to agency deliverable		No Change
7 U.S.C. Section 136: Endangered Species Act	Federal	Statute	Designed to protect species from extinction. Requires the SC Forestry Commission to manage for threatened & endangered species on state forests.	Requires a service	Designed to protect species from extinction. Requires the SC Forestry Commission to manage for threatened & endangered species on state forests.	No Change
Chapter 28: The Forest Renewal Program	State	Statute	Implementation of cost share. Eligibility of landowners.	Requires a service	Implementation of cost share. Eligibility of landowners.	No Change
Section 48-28-10						

Law number	Jurisdiction	Type	Description	Purpose the law serves:	Notes:	Changes made during FY2024
Chapter 30: Primary Forest Product Assessment	State	Statute	Describes how funds will be collected for Forest Renewal Program.	Not related to agency deliverable	Describes how funds will be collected for Forest Renewal Program.	No Change
Section 48-30-10						
Chapter 33: Forest Fire Protection Act	State	Statute	Definitions of forest land/forest fire. The SC Forestry Commission shall direct forest fire protection work. County forestry boards: terms and duties.	Requires a service	Definitions of forest land/forest fire. The SC Forestry Commission shall direct forest fire protection work. County forestry boards: terms and duties.	No Change
Section 48-33-10						
Chapter 34: Prescribed Fire Act	State	Statute	Establishes requirements for conducting prescribed fires. Established Certified Prescribed Fire Manager course and provides limited liability protection to certified burners. Defines prescribed fire and clarifies the role of the certified burner.	Requires a service	Establishes requirements for conducting prescribed fires. Established Certified Prescribed Fire Manager course and provides limited liability protection to certified burners. Defines prescribed fire and clarifies the role of the certified burner.	No Change
Section 48-34-10						
Chapter 35: Regulation of Fires on Certain Lands	State	Statute	Requires notification to the SC Forestry Commission and precautions before conducting outdoor burning. Establishes the ability for State Forester and the Governor to enact burning bans.	Requires a service	Requires notification to the SC Forestry Commission and precautions before conducting outdoor burning. Establishes the ability for State Forester and the Governor to enact burning bans.	No Change
Section 48-35-10						
Chapter 36: Best Management Practices Act	State	Statute	Sets guidelines for silvicultural activities to protect water quality, soil quality, and productivity, wildlife habitat, and the aesthetic integrity of the forest.	Requires a service	Sets guidelines for silvicultural activities to protect water quality, soil quality, and productivity, wildlife habitat, and the aesthetic integrity of the forest.	No Change

Law number	Jurisdiction	Type	Description	Purpose the law serves:	Notes:	Changes made during FY2024
Section 48-36-10						
Chapter 37: Southeastern Interstate Forest Fire Protection Compact	State	Statute	Allows sharing of wildland firefighting resources between the 13 states in the Southern Region through mutual aid via the Southeastern Interstate Forest Fire Protection Compact.	Requires a service	Allows sharing of wildland firefighting resources between the 13 states in the Southern Region through mutual aid via the Southeastern Interstate Forest Fire Protection Compact.	No Change
Section 48-37-10						
P.L. 95-313: Cooperative Forestry Assistance Act	Federal	Statute	Authority of the United States Forest Service to provide financial and technical assistance to states and private landowners on a variety of forestry issues, including forest management and stewardship, fire protection, insect and disease control, reforestation and stand improvement, and urban forestry.	Requires a service	Authority of the United States Forest Service to provide financial and technical assistance to states and private landowners on a variety of forestry issues, including forest management and stewardship, fire protection, insect and disease control, reforestation and stand improvement, and urban forestry.	No Change
Proviso 117.99	State	FY22-23 Proviso	Data Breach Notification - Requirements for state agencies.	Report our agency must/may provide	Data Breach Notification - Requirements for state agencies. Previous Proviso Number was 117.100.	No Change
Proviso 117.105	State	FY22-23 Proviso	Information Technology and Information Security Plans	Report our agency must/may provide	Information Technology and Information Security Plans. Previous Proviso Number was 117.107.	No Change
Proviso 117.110	State	FY22-23 Proviso	Statewide Strategic Information Technology Plan Implementation	Requires a manner of delivery	Previous Proviso Number was 117.112.	No Change
Proviso 117.15	State	FY22-23 Proviso	Allowance for Residences & Compensation Restrictions - Authorizes residences for forestry aides and caretaker at central headquarters.	Requires a service	Allowance for Residences & Compensation Restrictions - Authorizes residences for forestry aides and caretaker at central headquarters.	No Change

Law number	Jurisdiction	Type	Description	Purpose the law serves:	Notes:	Changes made during FY2024
Proviso 117.81	State	FY22-23 Proviso	Websites - Providing link on agency website to monthly state procurement card statements or report with same information.	Report our agency must/may provide	Websites - Providing link on agency website to monthly state procurement card statements or report with same information. Previous Proviso Number was 117.80.	No Change
Proviso 43.1	State	FY22-23 Proviso	Grant Funds Carry Forward - Authorizes unexpended grant funds in the current year to pay for expenditures incurred in the prior year.	Requires a service	Grant Funds Carry Forward - Authorizes unexpended grant funds in the current year to pay for expenditures incurred in the prior year.	No Change
Proviso 43.2	State	FY22-23 Proviso	Retention of Emergency Expenditure Refunds - Authorizes agency to retain all funds received as reimbursement of expenditures from other state or federal agencies when personnel and equipment are mobilized due to an emergency.	Requires a service		No Change
Proviso 43.3	State	FY22-23 Proviso	Commissioned Officers' Physicals - Authorizes the Commission to pay the cost of physical examinations for agency personnel who are required to receive such physical examinations prior to receiving a law enforcement commission.	Requires a service	Commissioned Officers' Physicals - Authorizes the Commission to pay the cost of physical examinations for agency personnel who are required to receive such physical examinations prior to receiving a law enforcement commission.	No Change
Proviso 43.4	State	FY22-23 Proviso	Compensatory Payment - Authorizes exempt employees of the agency may be paid for actual hours worked in lieu of compensatory time, at the discretion of the agency director, and providing funds are available.	Requires a service	Compensatory Payment - Authorizes exempt employees of the agency may be paid for actual hours worked in lieu of compensatory time, at the discretion of the agency director, and providing funds are available.	No Change
Proviso 43.6	State	FY22-23 Proviso	The Forestry Commission is authorized to carry forward any unspent funds appropriated for firefighting equipment into the current fiscal year to be expended for the same purpose.			Added
Proviso 43.5	State	FY22-23 Proviso	The Forestry Commission may sell promotional items that advocate for the forestry and forest culture, including items featuring the South Carolina Forestry Commission Forest Life brand logo, for the purposes of generating funds for the agency operations.	Funding agency deliverables(s)		No Change
Proviso 47.13	State	FY22-23 Proviso	Funds Transfer by DNR to Forestry Commission - For the current fiscal year, the Department of Natural Resources shall transfer \$100,000 of the funds appropriated for operating expenses of Wildlife and Freshwater Fisheries (Wildlife Management Areas) to the Forestry Commission.	Funding agency deliverable(s)		No Change

Law number	Jurisdiction	Type	Description	Purpose the law serves:	Notes:	Changes made during FY2024
Proviso 8.4	State	FY22-23 Proviso	Wireless Communications Tower: Educational Television Commission is directed to coordinate tower and antenna operations within South Carolina state government.	Requires a service	(ETV: Wireless Communications Tower) Educational Television Commission is directed to coordinate tower and antenna operations within South Carolina state government	No Change
Proviso 93.8	State	FY22-23 Proviso	Sale of surplus real property - Authorizes SC Forestry Commission to retain the net proceeds from the sale of surplus land for use in firefighting operations and replacement of firefighting equipment.	Requires a service		No Change
Proviso 93.9	State	FY22-23 Proviso	Cyber Security - Adoption and Implementation of cyber security policies, guidelines, and standards.	Requires a service		No Change
Section 30.4.10-165	State	Statute	S.C. Freedom Of Information Act: public business be performed in an open and public manner so that citizens shall be advised of the performance of public officials and of the decisions that are reached in public activity and in the formulation of public policy.	Requires a service	The availability and provision of the agency's public records to all requestors pursuant to the Freedom Of Information Act.	No Change
Section 48-23-100: Growing and selling forest tree seedlings and transplants	State	Statute	Defines the growth and sale of forest tree seedlings and transplants; restrictions; receipts to revolving fund; purchase for resale and revolving fund.	Requires a service	Defines the growth and sale of forest tree seedlings and transplants; restrictions; receipts to revolving fund; purchase for resale and revolving fund.	No Change
Section 48-23-120	State	Statute	Acquisition of real estate for timber production and other purposes	Requires a service	Acquisition of real estate for timber production and other purposes	No Change
Section 48-23-130: Acquisition by Commission of Lands for State Forests	State	Statute	Allows the agency to enter into agreements with federal or other agencies for the acquisition of lands.	Requires a service	Allows the agency to enter into agreements with federal or other agencies for the acquisition of lands.	No Change

Law number	Jurisdiction	Type	Description	Purpose the law serves:	Notes:	Changes made during FY2024
Section 48-23-260: Counties containing State Forest Lands Shall Share in Revenues	State	Statute	25% of gross revenue earned from certain privileges on state forest land each year is provided to the counties in which revenue is earned to be spent for "general school purposes." H.3383 (2019) amended this section to exempt the proceeds from land rentals being included in the gross revenue calculations.	Distribute funding to another entity	25% of gross revenue earned from certain privileges on state forest land each year is provided to the counties in which revenue is earned to be spent for "general school purposes." H.3383 (2019) amended this section to exempt the proceeds from land rentals being included in the gross revenue calculations.	No Change
Section 48-23-265: Defines Timber Theft and Fraud	State	Statute	Defines timber theft and fraud.	Requires a service	Defines timber theft and fraud.	No Change
Section 48-23-295 Forestry Services to Landowners	State	Statute	Scientific, technical, practical. Provides for assistance with afforestation, reforestation, maximum production of woodlands. Specialized equipment/operators or rental of same. Reasonable fees may be charged and receipts retained.	Requires a service	Scientific, technical, practical. Provides for assistance with afforestation, reforestation, maximum production of woodlands. Specialized equipment/operators or rental of same. Reasonable fees may be charged and receipts retained.	No Change
Section 48-23-90: General duties of Commission	State	Statute	Reports to the General Assembly on forest conditions. Prevent, control, and extinguish fires. Enforce forest laws. Advise and assist private land owners. Promote public appreciation of the advantages of forestry and the value of forests.	Report our agency must/may provide	Prevent, control, and extinguish fires. Enforce forest laws. Advise and assist private land owners. Promote public appreciation of the advantages of forestry and the value of forests.	No Change
Sections 48-23-10	State	Statute	Establishes the SC Forestry Commission, terms of office, and qualifications of Commissioners, meetings, and reimbursement, qualifications/duties of State Forester.	Not related to agency deliverable		No Change
Sections 48-23-70	State	Statute	Defines unlawful acts on State Forests. Authorizes the SC Forestry Commission to buy, sell, and rent property, cooperate with federal agencies in reforestation, negotiate agreements for fire suppression, develop forest disaster plans.	Requires a service	Authorizes the SC Forestry Commission to buy, sell, and rent property, cooperate with federal agencies in reforestation, negotiate agreements for fire suppression, develop forest disaster plans.	No Change
Sections 48-23-95	State	Statute	Defines forest law enforcement jurisdiction, responsibilities, and procedures.	Requires a service	Defines forest law enforcement jurisdiction, responsibilities, and procedures.	No Change

Law number	Jurisdiction	Type	Description	Purpose the law serves:	Notes:	Changes made during FY2024
Sections 48-5	State	Statute	The Forestry Commission may sell promotional items that advocate for the forestry and forest culture, including items featuring the South Carolina Forestry Commission Forest Life brand logo, for the purposes of generating funds for the agency operations. Unexpended funds may be carried forward from the prior fiscal year into the current fiscal year and used for the same purposes.	Requires a service		No Change
South Carolina Act 218, Law Enforcement Betterment Bill	State	Regulation	Develop minimum standards and policies for all agencies regarding the use of force, vehicle pursuits, no-knock warrants, hiring and firing practices, bodycam use, and processes for investigating complaints and tracking "at-risk" officer behavior, among other policies.	Requires a service		No Change

2024

Services Data

as submitted for the Accountability Report by:
P120 - Forestry Commission

Description of Service	Description of Direct Customer	Customer Name	Others Impacted by Service	Division or major organizational unit providing the service.	Description of division or major organizational unit providing the service.	Primary negative impact if service not provided.	Changes made to services during FY2024	Summary of changes to services
Provide administrative support to agency for accounts receivable, accounts payable and procurement.	Vendors, landowners	Executive Branch/State Agencies	Vendors, Private Citizens	Administration	Provide administrative support to agency for accounts receivable, accounts payable and procurement. SC Code of Laws Title 48, Chapters 23 - 37.	The agency could not operate at sufficient capacity or effectiveness in the fulfillment of its mission.	No Change	
Increase the public's awareness of the benefits of sustainable forest management, the advantages of forestry, and the values of forests.	School children and other students make up the audience for the Wood Magic Forest Fair program.		N/A	Communication & Public Information	Increase the public's awareness of the benefits of sustainable forest management, the advantages of forestry, and the values of forests. SC Code of Laws, 48-23-130; 48-23-260; 48-23-70 thru 78.	Thousands of school children would be deprived of the forestry-specific educational programming we provide through this program, information that we know from post-tests on the subject matter represents significant gains in knowledge.	No Change	
Increase the public's awareness of the benefits of sustainable forest management, the advantages of forestry, and the values of forests.	Environmental education teachers make up the audience to which PLT information, lesson plans and other environmental education programs is distributed.		N/A	Communication & Public Information	Increase the public's awareness of the benefits of sustainable forest management, the advantages of forestry, and the values of forests. SC Code of Laws, 48-23-130; 48-23-260; 48-23-70 thru 79.	Dozens of teachers would not be specifically trained in the Project Learning Tree curriculum, which would in turn mean that the thousands of school children who benefit from PLT's educational materials and programs would not otherwise do so.	No Change	
Increase the public's awareness of the benefits of sustainable forest management, the advantages of forestry, and the values of forests.	The audience for our general environmental education program is a wide one that includes the general public, students and teachers.		N/A	Communication & Public Information	Increase the public's awareness of the benefits of sustainable forest management, the advantages of forestry, and the values of forests. SC Code of Laws, 48-23-130; 48-23-260; 48-23-70 thru 80.	Thousands of school children would be deprived of the forestry-specific educational programming we provide through in-school, on-site and other programs that concentrate on forestry-specific conservation and environmental education concepts, all of which are aligned at every grade level to state educational standards.	No Change	
Increase the public's awareness of the benefits of sustainable forest management, the advantages of forestry, and the values of forests.	All South Carolina citizens, with particular emphasis on landowners owning at least 10 acres of forest, make up the audience to which forestry information is produced and promulgated by the Forestry Commission.		N/A	Communication & Public Information	Increase the public's awareness of the benefits of sustainable forest management, the advantages of forestry, and the values of forests. SC Code of Laws, 48-23-130; 48-23-260; 48-23-70 thru 81.	The general public would be deprived of the knowledge of the many and varied benefits of forestry and the statutory function of the agency, specifically the promotion of "a proper appreciation by the public of the advantages of forestry and the benefits to be derived from forest culture and preservation," would not be fulfilled.	No Change	

Description of Service	Description of Direct Customer	Customer Name	Others Impacted by Service	Division or major organizational unit providing the service.	Description of division or major organizational unit providing the service.	Primary negative impact if service not provided.	Changes made to services during FY2024	Summary of changes to services
Provide technical and financial assistance to forest landowners. Promote healthy rural and urban forests. Manage state forests for multiple benefits for the public.	Forest landowners with 10 or more acres of which 50% or more is forested	Forest landowners who received a Forest Stewardship plan	N/A	Forest Management	Provide technical and financial assistance to forest landowners. Promote healthy rural and urban forests. Manage state forests for multiple benefits for the public. SC Code of Laws, Chapters 48-23-90; 48-28-20; 48-30-50.	Privately owned forests would be more prone to damage from wildfire and pests and the economic impact of forestry would be reduced. Also, federal funds associated with the Forest Stewardship Program would not be available if SCFC did not administer this program.	No Change	
Manage state forests on a sustainable basis to provide multiple benefits and serve as a model for private forest landowners.	Visitors to state forests	All SC citizens	N/A	Forest Management	Manage state forests on a sustainable basis to provide multiple benefits and serve as a model for private forest landowners. SC Code of Laws, 48-23-130; 48-23-70 thru 86.	Opportunities for outdoor recreation by the general public would be minimized.	No Change	
Manage state forests on a sustainable basis to provide multiple benefits and serve as a model for private forest landowners.	Entities that purchased standing trees or pinestraw from SCFC state forests	Number of purchasers of forest products	N/A	Forest Management	Manage state forests on a sustainable basis to provide multiple benefits and serve as a model for private forest landowners. SC Code of Laws Title 48, Chapters 23.	Loss of timber harvesting and forest products manufacturing jobs as well as a reduction in revenue shared with counties.	No Change	
Manage state forests on a sustainable basis to provide multiple benefits and serve as a model for private forest landowners.	School districts in counties with state forest land	Number of counties that received a portion of state forest gross revenue in a given year	N/A	Forest Management	Manage state forests on a sustainable basis to provide multiple benefits and serve as a model for private forest landowners. SC Code of Laws, 48-23-130; 48-23-260; 48-23-70 thru 76.	County school districts could suffer budget shortfalls which could result in reduction in staffing and/or supplies for education.	No Change	
Provide technical and financial assistance to forest landowners. Promote healthy rural and urban forests. Manage state forests for multiple benefits for the public.	All South Carolina citizens, with particular emphasis on those who live and/or work in urban areas	Residents of communities that received assistance from SCFC urban & community forestry program	N/A	Forest Management	Provide technical and financial assistance to forest landowners. Promote healthy rural and urban forests. Manage state forests for multiple benefits for the public. SC Code of Laws, 48-23-130; 48-23-260; 48-23-70 thru 85.	Loss of urban canopy would result in an increase in stormwater runoff, heating and cooling costs, and air and noise pollution.	No Change	
Provide technical and financial assistance to forest landowners. Promote healthy rural and urban forests. Manage state forests for multiple benefits for the public.	Forest landowners with 10 or more acres	Forest landowners who received cost-share assistance from the southern pine beetle prevention program	N/A	Forest Management	Provide technical and financial assistance to forest landowners. Promote healthy rural and urban forests. Manage state forests for multiple benefits for the public. SC Code of Laws, 48-23-90; 48-23-295.	Southern pine beetle attacks could cause devastating losses to stands of pine trees across the state. Also, federal funds associated with the SPB Prevention Program would not be available if SCFC did not administer this program in SC.	No Change	

Description of Service	Description of Direct Customer	Customer Name	Others Impacted by Service	Division or major organizational unit providing the service.	Description of division or major organizational unit providing the service.	Primary negative impact if service not provided.	Changes made to services during FY2024	Summary of changes to services
Provide technical and financial assistance to forest landowners. Promote healthy rural and urban forests. Manage state forests for multiple benefits for the public.	All South Carolina citizens, with particular emphasis on landowners owning at least 10 acres of forest	Landowners who received advice from SCFC regarding prevention or control of insect or disease attacks.	N/A	Forest Management	Provide technical and financial assistance to forest landowners. Promote healthy rural and urban forests. Manage state forests for multiple benefits for the public. SC Code of Laws, 48-23-90; 48-23-295.	Insect and disease attacks could cause devastating losses to forested areas across the state	No Change	
Protect forests from harm from wildfires and natural disasters.	Private citizens, forest landowners, residents in the wildland-urban interface; forest industry in SC	State receiving wildland firefighting assistance from the SCFC	Private citizens, forest landowners, residents in the wildland-urban interface in associated states	Forest Protection	Protect forests from harm from wildfires and natural disasters. SC Code of Laws Title 48, Chapters 23 - 37	Wildland fire suppression agencies in other states would not have sufficient resources; Other states would not reciprocate with needed resources if SC has a need	No Change	
Protect forests from harm from wildfires and natural disasters.	Rural, volunteer fire departments	Number of fire departments that receive VFA grant funds each year	Private citizens, forest landowners, residents in the wildland-urban interface; local governments would not be as well equipped to support forest fire suppression; forest landowners in SC	Forest Protection	Protect forests from harm from wildfires and natural disasters. SC Code of Laws Title 48, Chapters 23 - 37.	If this service was not provided federal funds would not be made available to partners. Privately owned forests would be more prone to damage from wildfire and pests and the economic impact of forestry would be reduced.	No Change	
Protect forests from harm from wildfires and natural disasters.	Rural, volunteer fire departments and other emergency services agencies	Acquisition value of federal excess equipment acquired by the SCFC for use by agencies in the state	Rural fire departments, emergency managers, and emergency response agencies in SC	Forest Protection	Protect forests from harm from wildfires and natural disasters. SC Code of Laws Title 48, Chapters 23 - 37.	Rural fire departments and emergency services agencies would not have access to excess federal equipment, and these agencies may not have sufficient equipment to respond to fires and other emergencies.	No Change	
Protect forests from harm from wildfires and natural disasters.	Counties, municipalities, and agencies requesting large scale incident management assistance	Agency/Entity requesting IMT assistance	SC EMD, county emergency managers	Forest Protection	Protect forests from harm from wildfires and natural disasters. SC Code of Laws Title 48, 48-23-86, 48-33-40.	The IMT was developed to improve on scene management for large wildfires, natural disasters, and manmade disasters. Hurricanes, floods, and other events require skilled teams to coordinate safe, effective response. If the SCFC IMT was not available, response to these large events would be hampered	No Change	
Protect forests from harm from wildfires and natural disasters.	Private, state, federal and corporate forest landowners	Attendees at CPFM Courses	DHEC Air Quality staff, forest landowners, communities with high or moderate risk from wildfires, local fire departments	Forest Protection	Protect forests from harm from wildfires and natural disasters. SC Code of Laws, 48-35-10, 48-34-10, 48-35-40, 48-35-50, 16-11-180.	Prescribed burners would be unfamiliar with smoke management and associated laws and regulations. This would increase the risk to public safety.	No Change	

Description of Service	Description of Direct Customer	Customer Name	Others Impacted by Service	Division or major organizational unit providing the service.	Description of division or major organizational unit providing the service.	Primary negative impact if service not provided.	Changes made to services during FY2024	Summary of changes to services
Protect forests from harm from wildfires and natural disasters.	Communities adjacent to forested areas with risk of damage from wildfires	Assessments of communities adjacent to forested areas	Local Fire departments, county emergency management agencies	Forest Protection	Protect forests from harm from wildfires and natural disasters. SC Code of Laws Title 48, 44-33-40.	Communities adjacent to forested areas are unaware of the associated wildfire risk	No Change	
Protect forests from harm from wildfires and natural disasters.	Private, state, and corporate forest landowners	Forest landowners that were victims of timber theft, timber fraud, or related cases	Forest industry (sawmills, paper mills) manufacturers, end users of forest products	Forest Protection	Protect forests from harm from wildfires and natural disasters. SC Code of Laws, 16-11-580, 16-13-30, 16-13-177, 16-13-230, 16-13-240, 48-23-97.	Timber theft would increase, resulting in significantly higher losses to landowners, land managers, forest industry, and the wood supply chain.	No Change	
Protect forests from harm from wildfires and natural disasters.	Private and public landowners and land managers	Individual private and public landowners and land managers	Private citizens, forest landowners, residents in the wildland-urban interface; local fire departments; DHEC; forest industry in SC	Forest Protection	Protect forests from harm from wildfires and natural disasters. SC Code of Laws, 48-35-10, Section 48-35-1- DHEC Regulation 61-62.2.	Notifications are required to comply with state laws related to notifications & precautions, SC Smoke Management Guidelines, and DHEC regulations 61-62.2. Failure to track and validate notifications would result in poor air quality, increased risks to public safety, and failure to comply with federally mandated air quality levels.	No Change	
Provide administrative support to agency personnel for payroll and health benefits.			N/A	Human Resources	Provide administrative support to agency personnel for payroll and health benefits. SC Code of Laws Title 48, Chapters 23 - 37.	The agency could not operate at sufficient capacity or effectiveness in the fulfillment of its mission.	No Change	
Provide and support technology needed to fulfill the Agency's mission. Primary responsibilities include Communications Infrastructure, Geographic Information Systems (GIS), and Information Technology.			N/A	Information Technology	Provide and support technology needed to fulfill the Agency's mission. Primary responsibilities include Communications Infrastructure, Geographic Information Systems (GIS), and Information Technology.		No Change	
Provide technical and financial assistance to forest landowners. Promote healthy rural and urban forests. Manage state forests for multiple benefits for the public.	All South Carolina citizens, with particular emphasis on landowners owning at least 10 acres of forest	Forest landowners who received participated in a state or federal cost-share program that received a forest practice plan from SCFC	N/A	Region Operations	Provide technical and financial assistance to forest landowners. Promote healthy rural and urban forests. Manage state forests for multiple benefits for the public. SC Code of Laws, 48-23-130; 48-23-260; 48-23-70 thru 82.	Fewer acres of forestland would be sustainably managed, resulting in a loss of forestry-related jobs and associated economic impact. In addition, other benefits of active forest management such as wildfire risk reduction and ecosystem services would be reduced.	No Change	

Description of Service	Description of Direct Customer	Customer Name	Others Impacted by Service	Division or major organizational unit providing the service.	Description of division or major organizational unit providing the service.	Primary negative impact if service not provided.	Changes made to services during FY2024	Summary of changes to services
Provide technical and financial assistance to forest landowners. Promote healthy rural and urban forests. Manage state forests for multiple benefits for the public.	All South Carolina citizens, with particular emphasis on landowners owning at least 10 acres of forest	Forest landowners who received a forest management plan from SCFC	N/A	Region Operations	Provide technical and financial assistance to forest landowners. Promote healthy rural and urban forests. Manage state forests for multiple benefits for the public. SC Code of Laws, 48-23-130; 48-23-260; 48-23-70 thru 83	Fewer acres of forestland would be sustainably managed, resulting in a loss of forestry-related jobs and associated economic impact. In addition, other benefits of active forest management such as wildfire risk reduction and ecosystem services would be reduced.	No Change	
Provide technical and financial assistance to forest landowners. Promote healthy rural and urban forests. Manage state forests for multiple benefits for the public.	All South Carolina citizens, with particular emphasis on forest landowners	Number of landowners who contracted with SCFC to construct firebreaks.	N/A	Region Operations	Provide technical and financial assistance to forest landowners. Promote healthy rural and urban forests. Manage state forests for multiple benefits for the public. SC Code of Laws, 48-23-130; 48-23-260; 48-23-70 thru 84.	Prescribed burning would be carried out on fewer acres which would result in an increase in wildfire risk as well as a reduction in tree growth and wildlife habitat quality.	No Change	
Provide technical and financial assistance to forest landowners. Promote healthy rural and urban forests. Manage state forests for multiple benefits for the public.	All South Carolina citizens, with particular emphasis on forest landowners	Number of landowners who contracted with SCFC to carry out prescribed burning on their property.	N/A	Region Operations	Provide technical and financial assistance to forest landowners. Promote healthy rural and urban forests. Manage state forests for multiple benefits for the public. SC Code of Laws, 48-23-130; 48-23-260; 48-23-70 thru 84.	Prescribed burning would be carried out on fewer acres which would result in an increase in wildfire risk as well as a reduction in tree growth and wildlife habitat quality.	No Change	
Provide technical and financial assistance to forest landowners. Promote healthy rural and urban forests. Manage state forests for multiple benefits for the public.	All South Carolina citizens, with particular emphasis on forest landowners	Number of landowners who contracted with SCFC to stand by for prescribed burning on their property.	N/A	Region Operations	Provide technical and financial assistance to forest landowners. Promote healthy rural and urban forests. Manage state forests for multiple benefits for the public. SC Code of Laws, 48-23-130; 48-23-260; 48-23-70 thru 84.	Prescribed burning would be carried out on fewer acres which would result in an increase in wildfire risk as well as a reduction in tree growth and wildlife habitat quality.	No Change	
Provide technical and financial assistance to forest landowners. Promote healthy rural and urban forests. Manage state forests for multiple benefits for the public.	All South Carolina citizens, with particular emphasis on forest landowners	Number of landowners who contracted with SCFC to construct water bars on their property.	N/A	Region Operations	Provide technical and financial assistance to forest landowners. Promote healthy rural and urban forests. Manage state forests for multiple benefits for the public. SC Code of Laws, 48-23-130; 48-23-260; 48-23-70 thru 84.	Landowners would be less likely to install water bars on their roads and firebreaks, which would result in an increased likelihood of soil erosion.	No Change	
Provide technical and financial assistance to forest landowners. Promote healthy rural and urban forests. Manage state forests for multiple benefits for the public.	All South Carolina citizens, with particular emphasis on forest landowners	Number of landowners or vendors who contracted with SCFC to extract mired forestry equipment	N/A	Region Operations	Provide technical and financial assistance to forest landowners. Promote healthy rural and urban forests. Manage state forests for multiple benefits for the public. SC Code of Laws, 48-23-130; 48-23-260; 48-23-70 thru 84.	Costs for private forestry services vendors could increase which would result in higher costs for forest landowners, discouraging them from practicing active forest management.	No Change	
Protect forests from harm from wildfires and natural disasters.	Private, state, federal and corporate forest landowners	Number of fires responded to by agency personnel.	Private citizens, forest landowners, residents in the wildland-urban interface; local governments; forest industry in SC	Region Operations	Protect forests from harm from wildfires and natural disasters. SC Code of Laws, Title 48, Chapters 23-37.	Wildfires would possibly cause loss of human life, destruction of homes and other property, and loss of benefits associated with healthy forests.	No change	

Description of Service	Description of Direct Customer	Customer Name	Others Impacted by Service	Division or major organizational unit providing the service.	Description of division or major organizational unit providing the service.	Primary negative impact if service not provided.	Changes made to services during FY2024	Summary of changes to services
Provide high-quality seedlings at competitive prices to forest landowners for reforestation in South Carolina	Forest landowners, Christmas tree growers	Forest landowners, Christmas tree growers	N/A	Resource Development	Provide high-quality seedlings at competitive prices to forest landowners for reforestation in South Carolina. SC Code of Laws 48-23-100.	There could be a potential shortage of the best open-pollinated forest tree seedlings at competitive prices.	No Change	
Produce high-quality pine seed in advanced generation orchards for use in growing seedlings for reforestation in support of forestry in South Carolina. Surplus seed generated in orchards is sold on the market to raise operational funds.	Corporate nurseries: Weyerhaeuser, ArborGen, International Forest Seed, K&L Nursery	Corporate forest tree seedling nurseries	N/A	Resource Development	Produce high-quality pine seed in advanced generation orchards for use in growing seedlings for reforestation in support of forestry in South Carolina. Surplus seed generated in orchards is sold on the market to raise operational funds. SC Code of Laws 48-23-100.	A lack of seed sale revenue could require funding by appropriated state funds for tree improvement.	No Change	
Provide technical assistance on active harvesting operations to minimize environmental impacts to water quality and site productivity.	Forest landowners	Forest landowners	Loggers	Resource Development	Provide technical assistance on active harvesting operations to minimize environmental impacts to water quality and site productivity. SC Code of Laws 48-36-30.	The loss of the Courtesy Exam Program could result in increased water quality impact from forestry activities.	No Change	
Provide technical training on forestry Best Management Practices to loggers, foresters and forest landowners.	Timber operations professionals	Timber operations professionals	N/A	Resource Development	Provide technical training on forestry Best Management Practices to loggers, foresters and forest landowners. SC Code of Laws 48-36-30.	The loss of the TOP training program could result in increased water quality impact from forestry activities.	No Change	
Evaluate randomly-selected harvested sites for a statistically accurate estimate of compliance with state-approved Best Management Practices for forestry. This monitoring survey tracks the overall success of the program over time.	Forest landowners	Forest landowners	Loggers	Resource Development	Evaluate randomly-selected harvested sites for a statistically accurate estimate of compliance with state-approved Best Management Practices for forestry. This monitoring survey tracks the overall success of the program over time. SC Code of Laws 48-36-30.	The loss of BMP Monitoring would result in a lack of awareness in the overall success of the BMP Program and opportunities for improvement.	No Change	
Provide accurate forest resource data to the public to describe the extent and health of South Carolina's forest resource. These data are critical for use in expanding forest industry capacity sustainably.	All primary forest industry processors	Forest industry	The forestry community	Resource Development	Provide accurate forest resource data to the public to describe the extent and health of South Carolina's forest resource. These data are critical for use in expanding forest industry capacity sustainably. SC Code of Laws 48-23-90.	The FIA Program is the primary source of forest resource data. Loss of the program would result in data gaps in forest resource data.	No Change	
Publish forest resource data collected by agency staff on the extent and health of the forest resource, the manufacturing capacity in South Carolina and the global marketing information of forest products.	Primary and secondary forest product exporters	Forest product exporters	N/A	Resource Development	Publish forest resource data collected by agency staff on the extent and health of the forest resource, the manufacturing capacity in South Carolina and the global marketing information of forest products.	Lack of marketing data and reports would result in less awareness of export markets by SC forest industry.	No Change	

Description of Service	Description of Direct Customer	Customer Name	Others Impacted by Service	Division or major organizational unit providing the service.	Description of division or major organizational unit providing the service.	Primary negative impact if service not provided.	Changes made to services during FY2024	Summary of changes to services
Provide a service as requested for the description of the extent and health of the forest resource within a specific woodbasket.	New or existing primary forest product manufacturers	Forest industry	N/A	Resource Development	Provide a service as requested for the description of the extent and health of the forest resource within a specific woodbasket.	Loss of the ability to perform woodbasket analyses, would reduce economic activity through mill expansion in SC.	No Change	
Provide an estimate of the economic contribution of forestry to South Carolina's economy.	All South Carolina citizens, with particular emphasis on forest landowners	All SC citizens	N/A	Resource Development	Provide an estimate of the economic contribution of forestry to South Carolina's economy. SC Code of Laws 48-23-90.	Loss of economic analyses for forestry would create data gaps in the contribution that forestry makes to SC's economy.	No Change	
Temporary logging bridge rental.	Forest products operators including - loggers, site prep contractors, foresters, and wood buyers.	Forest products operators	Landowners, general public	Resource Development	Provide assistance on forestry Best Management Practices to loggers, foresters and forest landowners. SC Code of Laws 48-36-30.	Compliance with stream crossings BMP will remain low increasing risks to surface water quality within the state.	No Change	

2024

Partnerships Data

as submitted for the Accountability Report by:

P120 - Forestry Commission

Type of Partner Entity	Name of Partner Entity	Description of Partnership	Change to the partnership during the past fiscal year
Non-Governmental Organization	American Forest Foundation	The American Forest Foundation works on-the-ground with family forest owners, partners and elected officials to promote stewardship and protect the nation's forest heritage.	No Change
Non-Governmental Organization	ArborGen	The SCFC and ArborGen have a 10-year agreement that allows ArborGen to manage and operate Taylor Nursery. The SCFC can designate the sales price for up to 5 million seedlings to be planted in South Carolina.	No Change
Professional Association	Association of Consulting Foresters	The SCFC assists this partner in setting up training and outreach programs for foresters.	No Change
Non-Governmental Organization	Audubon South Carolina	South Carolina chapter of the National Audubon Society that works to protect birds and their habitats using science, advocacy, education and on-the-ground conservation.	No Change
State Government	Board of Registered Foresters - LLR	SCFC partners with LLR and the Board of Registered Foresters in helping to ensure SCFC foresters hired achieve registration within two years of employment.	No Change
Non-Governmental Organization	Center For Heirs Property Preservation	Non-profit that protects heirs' property and promotes its sustainable use to provide increased economic benefit to historically under-served families.	No Change
Higher Education Institute	Clemson Extension Service - Forestry & Nat. Res. Extension	SCFC cooperates with and coordinates forestry educational efforts with Forestry and Natural Resource Extension agents for timberland owners.	No Change

Type of Partner Entity	Name of Partner Entity	Description of Partnership	Change to the partnership during the past fiscal year
State Government	Clemson University	The SC Forestry Commission has agreements with Clemson University for insect and disease control, landowner outreach, disaster response, guest lecturers, and wood use and design.	No Change
Local Government	Councils of Government	SCFC Urban & Community Forestry staff work with the local COGs to facilitate planning at the county level.	No Change
State Government	County and State Forestry Advisory Boards	County Forestry Boards (COBs) are legally constituted boards to serve in an advisory capacity to the SC Forestry Commission in all matters relative to the general forestry program in South Carolina. Provisions for establishment of these COBs are found in the 1976 Code of Laws of South Carolina, as amended, Title 48, Chapter 33, known as the "South Carolina Forest Fire Protection Act," which became law in April, 1945. The Forestry Commission looks upon COBs as representing the people of the county in all matters pertaining to forestry and through the State Advisory Committee of COBs they serve in an advisory capacity to the Forestry Commission in all phases of forestry, including forest fire control, forest management, reforestation, information and education, research, forest insect and disease control, etc.	No Change
Professional Association	Foresters Council	The Foresters Council of South Carolina provides an organized and representative group of technical foresters to initiate action and act in an advisory capacity in matters pertaining to the development of the forest resources, the welfare of forest landowners, and processors of forest products in the state.	No Change
State Government	Heritage Trust Advisory Board	An advisory board of the SC Dept. of Natural Resources, the Heritage Trust Advisory Board protects significant natural and cultural lands in South Carolina. The SC Forestry Commission partners with the Heritage Trust Advisory Board in making and evaluating recommendations regarding management criteria and allowable uses for natural areas and features.	No Change
Non-Governmental Organization	International Society of Arboriculture	The SCFC assists this partner in setting up training and outreach programs with regard to standards for arborists.	No Change
Non-Governmental Organization	Longleaf Alliance	SCFC partners with the Longleaf Alliance to promote restoration of longleaf pine across its range in South Carolina. LLA provides training for SCFC foresters and partners with SCFC on landowner outreach.	No Change

Type of Partner Entity	Name of Partner Entity	Description of Partnership	Change to the partnership during the past fiscal year
Professional Association	National Association of State Foresters	The National Association of State Foresters is a non-profit organization composed of the directors of forestry agencies in the states, territories and the District of Columbia of the United States. The SC Forestry Commission partners with NASF, along with its counterpart state agencies, to serve as the primary delivery system for national-scale forestry-related initiatives and activities.	No Change
Non-Governmental Organization	National Deer Association (NDA), formerly Quality Deer Management Association (QDMA)	The SCFC partners with NDA to provide hunting opportunities to special groups(i.e. active and retired military). NDA is also a key partner in disseminating information on forestry and conservation.	No Change
Federal Government	National Park Service	The SCFC and USFS cooperate on wildfire suppression, fire prevention, federal excess equipment, and training through a Cooperative Agreement.	No Change
Non-Governmental Organization	National Wild Turkey Federation	SC Forestry Commission works with NWTF on landowner outreach and various forestry issues. SCFC also partners with NWTF on nursery and tree improvement projects.	No Change
Non-Governmental Organization	Open Space Institute (OSI)	The SCFC and OSI cooperate on conservation issues relating to policies and land acquisitions.	No Change
Non-Governmental Organization	SC Association of Conservation Districts	The SCFC receives advice from the SC Association of Conservation Districts on the Forest Stewardship Program and conservation issues.	No Change
Non-Governmental Organization	SC Chamber of Commerce	SCFC is a member of the SC Chamber of Commerce whose mission is to advocate for business interests in the state and promote economic development. The SCFC represents the forestry community of landowners, forestry professionals and manufacturers.	No Change
Professional Association	SC Christmas Tree Grower's Association	The SC Forestry Commission's Nursery & Tree Improvement Program produces seedlings for the Christmas Tree growers in South Carolina.	No Change

Type of Partner Entity	Name of Partner Entity	Description of Partnership	Change to the partnership during the past fiscal year
State Government	SC Department of Agriculture	Agribusiness projects; outreach to farmers through landowner programs.	No Change
State Government	SC Department of Commerce	The SC Forestry Commission has a working relationship with the SC Department of Commerce in supporting existing industries and recruitment of forestry projects in South Carolina.	No Change
State Government	SC Department of Health and Environmental Control	Memorandum of Understandings in place related to air quality (prescribed fire and smoke management) and related to water quality (Forestry Best Management Practices).	No Change
State Government	SC Department of Natural Resources	SC Forestry Commission provides forest management assistance to the SC DNR including timber sale assistance, prescribed burning, and firebreak plowing. The agencies also have an agreement regarding Wildlife Management Areas. SC Forestry Commission is a cooperating agency in SC Quail Council and the Heritage Trust Advisory Board.	No Change
Professional Association	SC Economic Developers Association	The SC Forestry Commission maintains a membership in the SC Economic Developers Association and works with its members at the state, regional and local levels on forestry-related economic development projects.	No Change
State Government	SC Emergency Management Division	SC Forestry Commission is the lead for ESF-4, Wildland Firefighting, and participates in state-level activations of the state emergency operations center. Provide input to response plans, staffing at SEOC, expertise on incident management, firefighting, and assist with response to natural and man-made disasters. Provide law enforcement support, aircraft support, and debris removal crews after hurricanes and when lane reversal operations occur. EMD supports the SC Forestry Commission when large wildfires occur, assisting with resource requests and interfacing with FEMA.	No Change
Private Business Organization	SC Farm Bureau	SC Farm Bureau and SCFC work with policies and advisory committee in forestry-related issues.	No Change

Type of Partner Entity	Name of Partner Entity	Description of Partnership	Change to the partnership during the past fiscal year
State Government	SC Geographic Information Council (SCGIC)	The SC Forestry Commission partners with SCGIC to help coordinate activities among and between all other agencies in the state that perform geographical information systems (GIS) duties. This coordinating includes spatial data collection and management, standards development and data and information sharing. Cooperating council members include: Aeronautics Commission, DHEC, DNR, Revenue and Fiscal Affairs, DOR, DOT, EMD, Santee Cooper, SLED, DPS, USC-Institute for Families in Society, Army National Guard and the State Mapping Advisory Committee.	No Change
Professional Association	SC Interagency Drone Users Consortium	The South Carolina Interagency Drone Users Consortium or SCiDUC is a nonprofit association of drone pilots, facilitators and Unmanned Aerial System (UAS) decision makers. Its membership is exclusive to federal, state and local government employees. SCiDUC has over 160 members employed by more than 50 different government agencies. The organization is dedicated to improving communication between different agencies, leveraging each other's strengths and educating our members on cutting edge technology, regulatory changes and improvements to the industry. Several SCFC personnel, including the agency's fire chief and chief pilot, are members of the SCiDUC.	No Change
State Government	SC Law Enforcement Division - SLED	Provide state incident management team to support response to man-made or natural disasters. Coordinate response, account for responders, and formulate plans for incidents. use SLED helicopter equipped with Bambi bucket provided by the SC Forestry Commission under the existing MOU to suppress wildland fires. Provide law enforcement assistance to SLED as requested for support of hurricanes and other disasters.	No Change
State Government	SC National Guard	Conduct annual joint training. Participate in tabletop and functional exercises to prepare for wildland firefighting. During high wildfire periods, use SC NG aircraft equipped with Bambi buckets to suppress wildfires and protect homes from damage. Provide military appreciation hunts and forestry awareness programs.	No Change
Non-Governmental Organization	SC Green Industry Association (formerly SC Nursery & Landscape Association)	The SCGIA works with the SCFC to provide better nursery stock and species selected for given locations. This involves training and outreach programs.	No Change
Non-Governmental Organization	SC Palmetto Agribusiness Council	PABC creates an environment where agribusiness grow, prosper, and compete in the marketplace of the future. PABC collaborates with different agribusiness sectors on critical issues, as well as working with business sector partners like the SC Chamber of Commerce, the SC Manufacturers Alliance and the SC Ports Authority.	No Change
Non-Governmental Organization	SC Rural Water Administration	The SCFC provides pass-through funding from LSR Grant to SCRWA to raise awareness of importance of forestry in protecting water quality downstream.	No Change

Type of Partner Entity	Name of Partner Entity	Description of Partnership	Change to the partnership during the past fiscal year
Professional Association	SC Timber Producers Association	The SC Forestry Commission's Environmental Management staff holds Best Management Practices training program for loggers and foresters.	No Change
Professional Association	SC Tree Farm Program	SCFC provides members to the state Tree Farm Committee, conducts Tree Farm inspections, and works closely with Tree Farm on landowner outreach and recognition. State Forests are certified in Tree Farm program.	No Change
Non-Governmental Organization	SC Wildlife Federation	SCFC works with this partner to make and revise policies that relate to the conservation of forest lands.	No Change
Professional Association	Society of American Foresters (SAF) - SC Division	SCFC pays for SAF membership for foresters and encourages them to join and participate in SAF sponsored events.	No Change
State Government	South Carolina Ports Authority	The SC Forestry Commission cooperates with the SC Ports Authority on international trade issues for forest products.	No Change
Professional Association	South Carolina State Firefighters' Association	SCSFA represents fire departments across the state, and is a key partner in disseminating information, joint training, and mobilization of resources.	No Change
Non-Governmental Organization	Southern Group of State Foresters	The SC Forestry Commission is a member of the Southern Group of State Foresters (SGSF) and provides staff to serve on SGSF committees.	No Change
Non-Governmental Organization	Stewardship Coordinating Committee	Stewardship Coordinating Committee and the SCFC partner to advise the state foresters on the Forest Stewardship program and the Forest Action Plan.	No Change

Type of Partner Entity	Name of Partner Entity	Description of Partnership	Change to the partnership during the past fiscal year
Non-Governmental Organization	Sustainable Forestry Initiative	The Sustainable Forestry Initiative is an independent, nonprofit organization solely responsible for maintaining, overseeing and improving the internationally recognized SFI certification program. The SC Forestry Commission partners with SFI, particularly through its state implementation committee, both to certify its own forests to the SFI standard and to work with local organizations and individuals in providing leadership and best practices to improve forest management on both certified and uncertified lands.	No Change
Non-Governmental Organization	The Conservation Fund	SCFC works with this partner to make and revise policies which relate to the conservation of rural lands and conservation easements. The SCFC also partners with The Conservation Fund to purchase land.	No Change
Non-Governmental Organization	The Forestry Association of South Carolina	SC Forestry Commission works with South Carolina Forestry Association staff and members on numerous resource development projects, forest management issues, legislative issues, and landowner outreach.	No Change
Non-Governmental Organization	The Nature Conservancy	SCFC partners with The Nature Conservancy on conservation projects across South Carolina.	No Change
Non-Governmental Organization	Trees SC	SCFC and Trees SC have an MOU through which SCFC provides funding to Trees SC from a US Forest Service grant to conduct educational workshops and increase awareness of the importance of urban forestry.	No Change
Higher Education Institute	University-based Research Cooperatives	The SC Forestry Commission maintains membership in university-based cooperative research programs at NC State for access to research on tree improvement, nursery production, and forest growth models.	No Change
Non-Governmental Organization	US Endowment for Forestry & Communities, Inc.	SCFC partners with the US Endowment for Forestry & Communities whose mission is to work with the public and private sectors to improve the health and vitality of the nation's working forests and forest-reliant communities.	No Change
Federal Government	US Fish & Wildlife Service	The SCFC and US Fish & Wildlife Service cooperate on wildfire suppression, fire prevention, federal excess equipment, and training through a Cooperative Agreement.	No Change
Federal Government	USDA APHIS	The SC Forestry Commission's Marketing Program works with USDA APHIS on phytosanitary treatment issues related to forest product international trade. SCFC Forest Health program works with APHIS to combat forest pests and invasive species.	No Change

Type of Partner Entity	Name of Partner Entity	Description of Partnership	Change to the partnership during the past fiscal year
Federal Government	USDA Farm Service Agency	SCFC provides technical assistance to landowners who are participating in FSA programs such as EFRP and CRP. SCFC and FSA currently have an agreement through which FSA reimburses SCFC for costs associated with providing this assistance.	No Change
Federal Government	USDA Forest Service	The SCFC and USFS cooperate on wildfire suppression, fire prevention, federal excess equipment, and training through a Cooperative Agreement. The USFS also provides funding for these programs as well as Forest Stewardship and Urban & Community Forestry. The SC Forestry Commission's FIA crews collect forest resource data for the US Forest Service FIA database. Mill data for the USFS' Timber Production Output (TPO) program is collected by Forestry Commission staff every two years. The SCFC and USFS operate under a Good Neighbor Authority (GNA) agreement to sell national forest timber through state government procurement protocols.	No Change
Federal Government	USDA Natural Resources Conservation Service	SCFC provides technical assistance to landowners who are participating in NRCS programs such as EQIP. SCFC and NRCS currently have a Contribution Agreement through which NRCS reimburses SCFC for costs associated with providing this assistance. SCFC often partners with NRCS on landowner outreach efforts.	No Change
Non-Government Organization	Palmetto AgriBusiness Council	PABC creates an environment where agribusiness grow, prosper, and compete in the marketplace of the future. PABC collaborates with different agribusiness sectors on critical issues, as well as working with business sector partners like the SC Chamber of Commerce, the SC Manufacturers Alliance and the SC Ports Authority.	No Change
State Government	South Carolina Office of Resilience	SCOR serves the state in three main ways: Housing recovery following a federally declared disaster, mitigation against future flood risks, and resilience planning. SCFC provides input on the SC Resilience Plan.	No Change
State Government	Montana Department of Natural Resources and Conservation	Provide mutual assistance in wildland fire management, exercises, training, prescribed burning, or other activities that require the use of equipment and personnel with respect to the sharing of resources between DNRC and the SCFC for wildland fire emergencies, incident management, and fuels management.	No Change
Non-Government Organization	Rural Resource Coalition of SC	The Rural Resource Coalition of SC is an alliance of housing, agriculture, community economic development, conservation, forestry and tourism working on behalf of all South Carolina's residents to strengthen the state's rural communities. Several SCFC personnel are members of the RRC, which works to advance policy for sustainable rural economic development, promote rural natural resources, and grow grassroots efforts to support rural prosperity.	No Change
Non-Government Organization	Green Infrastructure Center	The Green Infrastructure Center helps SCFC carry out urban forestry initiatives such as canopy mapping and capacity building.	No Change

Type of Partner Entity	Name of Partner Entity	Description of Partnership	Change to the partnership during the past fiscal year
State Government	Montana Department of Natural Resources and Conservation	Provide mutual assistance in wildland fire management, exercises, training, prescribed burning, or other activities that require the use of equipment and personnel with respect to the sharing of resources between DNRC and the SCFC for wildland fire emergencies, incident management, and fuels management.	No Change
Non-Government Organization	SC Land Trust Network	The South Carolina Land Trust Network is a statewide association that supports the protection and preservation of forest and farmland, waterways, scenic views, wildlife habitat, outdoor recreation, and historical resources. SCFC works with SCLTN to promote the use of conservation easements and other strategies to conserve working lands.	No Change
State Government	SC State Park Service	SC State Park Service manages and protects more than 90,000 acres of South Carolina's natural and cultural resources including 47 operational parks and six historic properties. SCFC and SCSPS work together on several landscape-level initiatives.	No Change
Non-Government Organization	Arbor Day Foundation	The Arbor Day Foundations works with SCFC to facilitate efforts to plant and protect trees in both rural and urban areas.	No Change
Non-Government Organization	Sustainable Forestry Initiative	The Sustainable Forestry Initiative is an independent, nonprofit organization solely responsible for maintaining, overseeing, and improving the internationally recognized SFI certification program. The SC Forestry Commission partners with SFI, through its state implementation committee, both to certify its own forests to the SFI standard and to work with local organizations and individuals in providing leadership and best practices to improve forest management on both certified and uncertified lands. SCFC also partners with SFI through its subsidiary Project Learning Tree (PLT), which provides the source material for much of the agency's forestry and environmental education and outreach programming.	No Change
Federal Government	US Commercial Services	Personnel from the US Commercial Services are stationed in US embassies to offer support for outbound trade missions.	No Change
Professional Association	SUSTA (Southern United States Trade Association)	SUSTA provides support for both incoming and outgoing trade missions as well as trade shows.	No Change
Professional Association	SC International Trade Coalition	The SC International Trade Coalition provides training to small businesses on marketing and exporting their products.	No Change

Type of Partner Entity	Name of Partner Entity	Description of Partnership	Change to the partnership during the past fiscal year
Federal Government	SBDC – Small Business Development Center	The Small Business Development Center extends loans to and offers training to small businesses in the realms of marketing and product exporting.	No Change
State Government	SC Conservation Bank	The South Carolina Conservation Bank works with SCFC to conserve and protect South Carolina's forest lands and urban parks.	Add
State Government	SC Parks, Recreation, and Tourism	SC Parks, Recreation, and Tourism has provided grant funds in the past for trail work on state forests.	Add

Reports Data

as submitted for the Accountability Report by:
P120 - Forestry Commission

Report Name	Law Number (if applicable)	Summary of information requested in the report	Date of most recent submission DURING the past fiscal year	Reporting Frequency	Type of entity/entities	Method to access the report	Direct access hyperlink or agency contact (if not provided to LSA for posting online)	Changes to this report during the past fiscal year	Explanation why a report wasn't submitted
Agency Accountability Report	§1-1-810	The report "must contain the agency's or department's mission, objectives to accomplish the mission, and performance measures that show the degree to which objectives are being met." Agencies must "identify key program area descriptions and expenditures and link these two key financial and performance results measures."	September 2023	Annually	Governor or Lt. Governor AND Legislative entity or entities	Available on another website	P120.pdf (scstatehouse.gov)	No Change	
Agency annual report	§48-23-90	Document of record capturing all of the agency's essential programs, activities, finances, accomplishments.	March-23	Annually	South Carolina state agency or agencies	Available on another website	SCFCAnnualReportFY2021-2022.pdf	No Change	
Debt Collection Report	Proviso 117.33, FY 2021-22 Appropriations Report	Report detailing agency's amount of outstanding debt and all methods it has used to collect that debt.	February 2024	Annually	Legislative entity or entities	Available on agency's website	Lindsey Gassaway is the agency contact person	No Change	
Federal Excess Personal Property (FEPP) Audit & Review		personal property management reviews of the SC Forestry Commission's FEPP program to ensure compliance with all federal and departmental regulations, policies and procedures.	March-23	Every Two years	Entity within federal government	Available on another website	Ashley McFadden is the agency contact person	No Change	
Fines & Fees Report	Proviso 117.71, FY 2021-22 Appropriations Report	Report documenting fees and fines collected by the agency during the fiscal year for registrations & rentals, services performed and user fees.	September-23	Annually	Legislative entity or entities	Available on agency's website	https://www.scfc.gov/wp-content/uploads/2024/08/FY2024FinesFeesReport.pdf	No Change	
InfoSec and Privacy Survey	Proviso 117.107, FY 2021-22 Appropriations Report	To better the Division of Information Security's (DIS) understanding of agency's efforts to comply with the State's information security policies.	July-23	Annually	South Carolina state agency or agencies	Hard copy available upon request	The link is not published. Randy Rollings is the agency contact.	No Change	

Report Name	Law Number (if applicable)	Summary of information requested in the report	Date of most recent submission DURING the past fiscal year	Reporting Frequency	Type of entity/entities	Method to access the report	Direct access hyperlink or agency contact (if not provided to LSA for posting online)	Changes to this report during the past fiscal year	Explanation why a report wasn't submitted
IT Data Collection and Planning System	Proviso 117.112, FY 2021-22 Appropriations Report	Report on agency's information technology and budget including IT inventory; previous year's, planned current year and projected next year's IT expenditures and IT personnel. Data is to link to with agency's related EBO B1/B2 Form for DTO review and approval. System is also used for IT procurements of \$50,000 or more to for DTO review and recommendation.	July-23	Annually	South Carolina state agency or agencies	Hard copy available upon request	The link is not published. Randy Rollings is the agency contact.	No Change	
Report on Applying Agreed-Upon Procedures		Report on agreed-upon procedures of the agency with regard to cash receipts/revenues, cash disbursements/non-payroll expenditures, journal entries and transfers, surety bond transactions and cost-share fund administration.	July-23	Annually	South Carolina state agency or agencies	Available on agency's website	https://osa.sc.gov/wp-content/uploads/2023/08/Forestry-Comm-P1223-Final-Report.pdf	No Change	Last audit was for FY 2022 and July 1, 2022 – May 31, 2023.
Report on Human Resource data submitted for our budget proposal	Proviso 117.143	Report on Human Resource data submitted for our budget proposal submitted to the Division of Human Resources (DSHR) and agencies to partner prior to the submission of a budget request to evaluate the greatest needs in the agency, develop data regarding the competitiveness of compensation in those areas and outline a proposed compensation plan(s) to address the high need areas.	August 2023	Annually	South Carolina state agency or agencies	Available on another website	Krista Emory is the agency contact.	No Change	

Report Name	Law Number (if applicable)	Summary of information requested in the report	Date of most recent submission DURING the past fiscal year	Reporting Frequency	Type of entity/entities	Method to access the report	Direct access hyperlink or agency contact (if not provided to LSA for posting online)	Changes to this report during the past fiscal year	Explanation why a report wasn't submitted
EEOC Progress Report		The EEOC collects workforce data from employers with more than 100 employees (lower thresholds apply to federal contractors). Employers meeting the reporting thresholds have a legal obligation to provide the data; it is not voluntary. The data is collected using the reports below and is used for a variety of purposes including enforcement, self-assessment by employers, and research. Each of the reports collects data about gender and race/ethnicity by some type of job grouping. This information is shared with other authorized federal agencies in order to avoid duplicate collection of data and reduce the burden placed on employers. Although the data is confidential, aggregated data is available to the public.	July 2023	Annually	South Carolina state agency or agencies		Krista Emory is the agency contact.	No Change	

AGENCY NAME:	South Carolina Forestry Commission		
AGENCY CODE:	P120	SECTION:	043

2024
Accountability Report

SUBMISSION FORM

I have reviewed and approved the data submitted by the agency in the following templates:

- Data Template
 - Reorganization and Compliance
 - FY2024 Strategic Plan Results
 - FY2025 Strategic Plan Development
 - Legal
 - Services
 - Partnerships
 - Report or Review
 - Budget
- Discussion Template
- Organizational Template

I have reviewed and approved the financial report summarizing the agency’s budget and actual expenditures, as entered by the agency into the South Carolina Enterprise Information System.

The information submitted is complete and accurate to the extent of my knowledge.

AGENCY DIRECTOR <i>(SIGN AND DATE):</i> <i>(TYPE/PRINT NAME):</i>	SIGNATURE ON FILE	Signature Received: 09/13/2024
	Scott L. Phillips	

BOARD/CMSN CHAIR <i>(SIGN AND DATE):</i> <i>(TYPE/PRINT NAME):</i>	SIGNATURE ON FILE	Signature Received: 09/13/2024
	Walter A. McPhail	