



# **2024 Annual Accountability Report**

---

**Lander University**

**Agency Code: H210**

---

# Table of Contents

<b>Agency’s Discussion and Analysis .....</b>	<b>1</b>
<b>Agency Organization Chart .....</b>	<b>2</b>
<b>Reorganization and Compliance .....</b>	<b>11</b>
<b>Strategic Plan Results .....</b>	<b>12</b>
<b>Strategic Plan Development .....</b>	<b>13</b>
<b>Budget Data .....</b>	<b>16</b>
<b>Legal Data .....</b>	<b>17</b>
<b>Services Data.....</b>	<b>18</b>
<b>Partnerships Data.....</b>	<b>19</b>
<b>Reports Data .....</b>	<b>20</b>
<b>Submission Form.....</b>	<b>25</b>

<b>AGENCY NAME:</b>	<b>Lander University</b>		
<b>AGENCY CODE:</b>	<b>H210</b>	<b>SECTION:</b>	<b>018</b>

**AGENCY’S DISCUSSION AND ANALYSIS**

# LANDER UNIVERSITY

9/13/2024

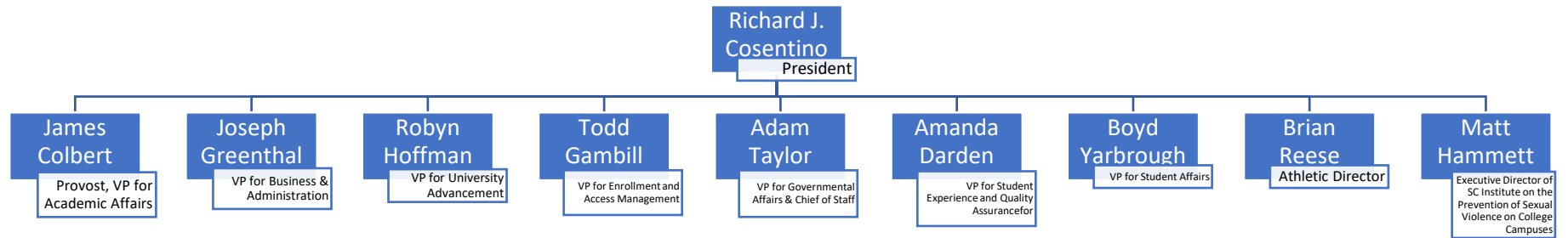
## ACCOUNTABILITY REPORT – OUTCOMES FOR FY2024

*(JULY 1, 2023 – JUNE 30, 2024)*

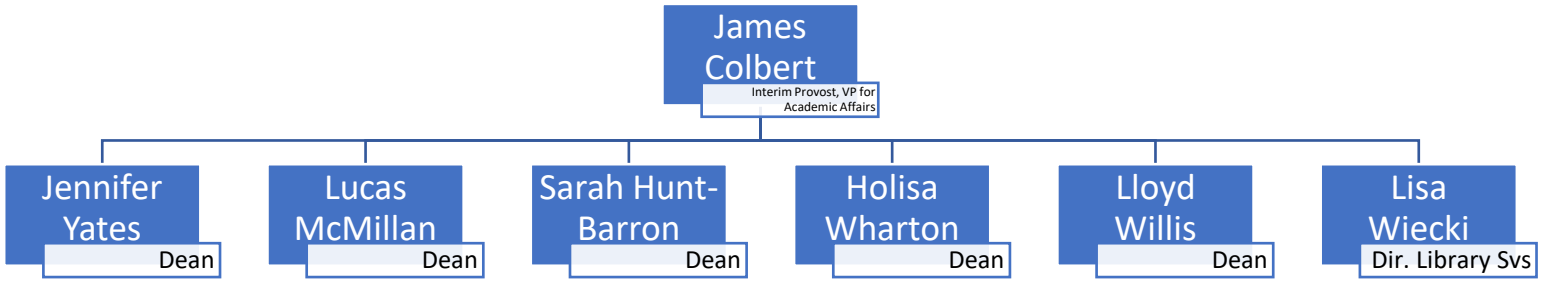
1. Lander University has set a new enrollment record, marking the ninth consecutive increase in total enrollment between Fall 2015 and Fall 2024, a 62% increase over nine years. Highlights of this record-breaking enrollment over the previous year include:
  - 7% increase in new students
  - 6% increase in the freshman class
  - 12% increase in sophomore class
  - 4% increase in graduate and online students
  
2. The Lander University Board of Trustees continues to be actively engaged in strategic planning discussions around 22 focus areas and six strategic pillars, approved at the March 5, 2024, board meeting.
  
3. Developed and approved four new high-demand, market-driven programs:
  - Bachelor of Science (B.S.) in Education and Child Development
  - Master of Science (M.S.) in Criminology and Criminal Justice
  
4. Lander University developed and implemented a successful university-wide academic recovery program for first-year students. The program is designed to create an academic coaching department, intervention protocols and policy, and resources to support students and to proactively increase student success. Goals to be benchmarked and measured over multiple years include increased first-year student satisfaction and engagement, increased progression toward an academic degree, increased academic achievement, and increased retention of first-year students. Successful outcomes for FY 2024 include:
  - 4% increase in sophomore academic retention
  - 1% increase in first-time freshman academic retention.
  
5. In November 2023, Lander University announced the recruitment of Matthew Hammett to lead the South Carolina Institute on the Prevention of Sexual Violence on College Campuses. Authorized by Governor Henry McMaster and the S.C. General Assembly in 2022, the Institute’s primary mission is to reduce the prevalence of interpersonal violence on college campuses in South Carolina through a collaborative, unified approach. As director, Hammett will work closely with representatives from each of the state’s public and private higher education institutions to capture best practices in sexual violence prevention and intervention, as well as survivor care and support services. In addition to deploying these standards, he will be instrumental in facilitating research opportunities and in developing educational and training materials that will be available to all participating colleges and universities. His official start date was Jan. 2, 2024.

<b>AGENCY NAME:</b>	<b>Lander University</b>		
<b>AGENCY CODE:</b>	<b>H210</b>	<b>SECTION:</b>	<b>018</b>

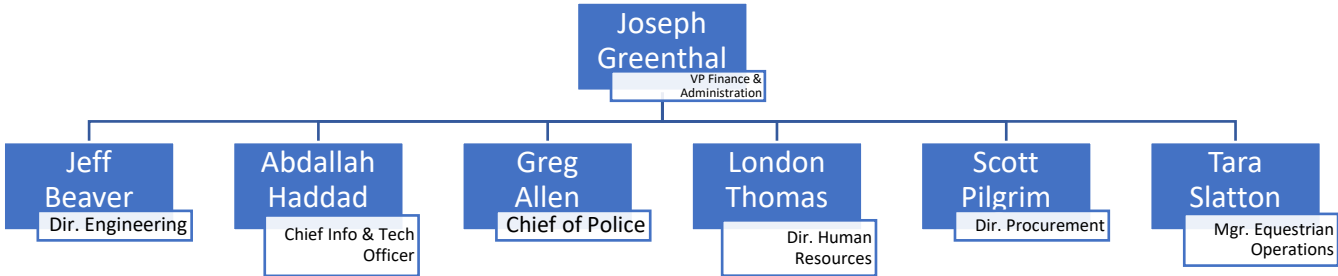
**AGENCY ORGANIZATIONAL CHART**



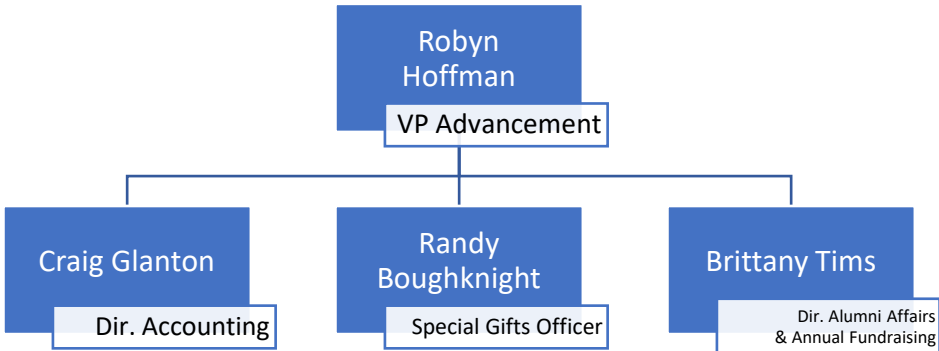
<b>AGENCY NAME:</b>	Lander University		
<b>AGENCY CODE:</b>	H210	<b>SECTION:</b>	018



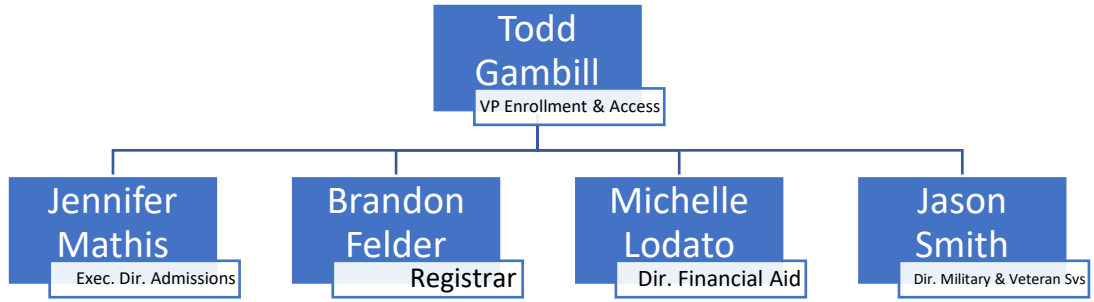
<b>AGENCY NAME:</b>	Lander University		
<b>AGENCY CODE:</b>	H210	<b>SECTION:</b>	018



<b>AGENCY NAME:</b>	Lander University		
<b>AGENCY CODE:</b>	H210	<b>SECTION:</b>	018

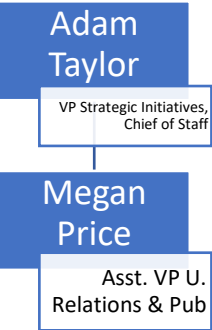


<b>AGENCY NAME:</b>	Lander University		
<b>AGENCY CODE:</b>	H210	<b>SECTION:</b>	018

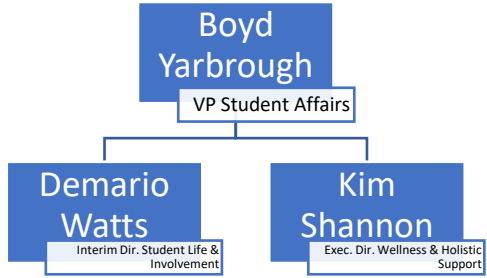




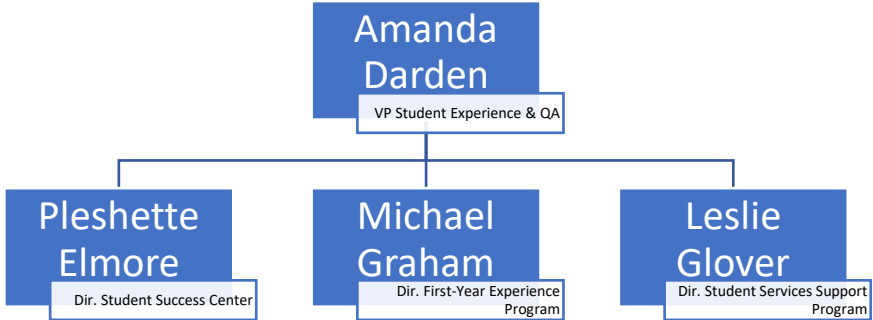
<b>AGENCY NAME:</b>	Lander University		
<b>AGENCY CODE:</b>	H210	<b>SECTION:</b>	018



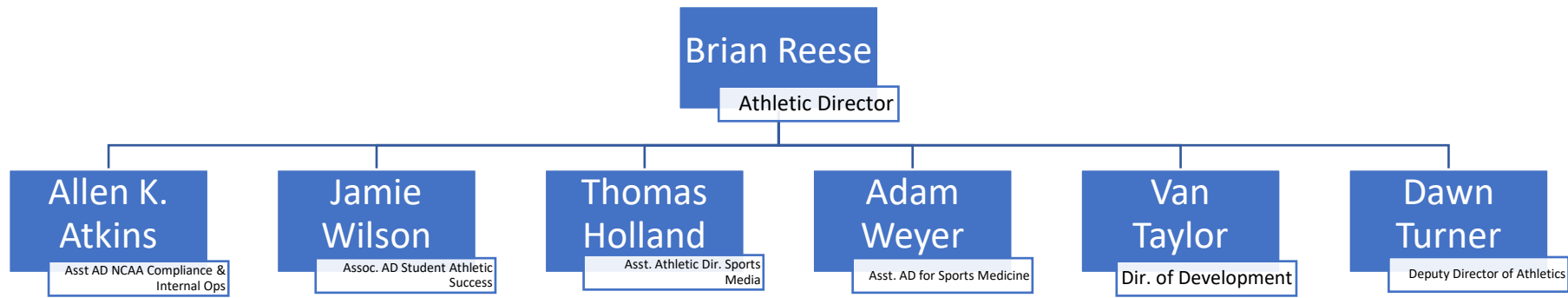
<b>AGENCY NAME:</b>	Lander University		
<b>AGENCY CODE:</b>	H210	<b>SECTION:</b>	018



<b>AGENCY NAME:</b>	Lander University		
<b>AGENCY CODE:</b>	H210	<b>SECTION:</b>	018



<b>AGENCY NAME:</b>	Lander University		
<b>AGENCY CODE:</b>	H210	<b>SECTION:</b>	018



# 2025

## Reorganization and Compliance

as submitted for the Accountability Report by:

### H210 - Lander University

#### Primary Contact

First Name	Last Name	Role/Title	Email Address	Phone
Matt	Braaten	AVP Planning, Analytics & Decision-support	mbraaten@lander.edu	864-388-8827

#### Secondary Contact

First Name	Last Name	Role/Title	Email Address	Phone
Ashley	Wilkie	Budget Director	awilkie@lander.edu	864-388-8305

#### Agency Mission

Adopted in:

2016

Lander University offers high-demand and market-driven programs to ambitious and talented students in South Carolina and beyond. These programs are delivered in a rich liberal arts environment to produce highly qualified and marketable graduates.

#### Agency Vision

Adopted in:

2021

All Lander University graduates are broadly educated, well-informed, equipped for responsible participation in the civic lives of their communities, and prepared to continue their education or launch their careers

#### Recommendations for reorganization requiring legislative change:

None

#### Agency intentions for other major reorganization to divisions, departments, or programs to allow the agency to operate more effectively and efficiently in the succeeding fiscal year:

None

#### Significant events related to the agency that occurred in FY2024

Description of Event	Start	End	Agency Measures Impacted	Other Impacts
No performance measures were affected.				

Is the agency in compliance with S.C. Code Ann. § 2-1-220, which requires submission of certain reports to the Legislative Services Agency for publication online and the State Library? (See also S.C. Code Ann. § 60-2-20).

Yes

Reason agency is out of compliance: (if applicable)

Is the agency in compliance with various requirements to transfer its records, including electronic ones, to the Department of Archives and History? See the Public Records Act (S.C. Code Ann. § 30-1-10 through 30-1-180) and the South Carolina Uniform Electronic Transactions Act (S.C. Code Ann. § 26-6-10 through 26-10-210).

Yes

Does the law allow the agency to promulgate regulations?

No

Law number(s) which gives the agency the authority to promulgate regulations:

Has the agency promulgated any regulations?

No

Is the agency in compliance with S.C. Code Ann. § 1-23-120 (J), which requires an agency to conduct a formal review of its regulations every five years?

Yes

(End of Reorganization and Compliance Section)

# FY2024

## Strategic Plan Results

as submitted for the Accountability Report by:  
**H210 - Lander University**

- Goal 1** A governing board engaged in the review of the university's mission, vision, and university-level policies
- Goal 2** A university engaged in service with State and local community partners
- Goal 3** Student success
- Goal 4** Optimized campus infrastructure and grounds

Perf. Measure Number	Description	Base	Target	Actual	Value Type	Desired Outcome	Time Applicable	Calculation Method	Data Source	Data Location	Stakeholder Need Satisfied	Primary Stakeholder	State Funded Program Number Responsible	Notes
<b>1.1 Develop action plans necessary to accomplish strategic plan objectives</b> State Objective: Education, Training, and Human Development														
1.1.1	By June 30, 2024, develop action plans to accomplish objectives laid out in the 2023 Strategic Plan	0%	100%	100%	Percent complete	Complete	State Fiscal Year		Internal Records	Office of the President	Access and support from a South Carolina regional comprehensive university to obtain an undergraduate or graduate degree.	General Public: Students who are high school graduates, veterans, or adults who seek to continue their education or launch their career.	N/A	
<b>2.1 Develop university work groups inclusive of public and private colleges and universities to support the mission and vision of the South Carolina Institute for the Prevention of Sexual Violence on College Campuses (SCIPSVCC)</b> State Objective: Education, Training, and Human Development														
2.1.1	By June 30, 2024, develop workgroups (e.g., Chiefs of police, Title IX Officers, etc.) to support the mission and vision of the SCIPSVCC.	0%	100%	50%	Percent complete	Complete	State Fiscal Year		Internal Records	Office of the President	Access and support from a South Carolina regional comprehensive university to obtain an undergraduate or graduate degree.	General Public: Students who are high school graduates, veterans, or adults who seek to continue their education or launch their career.	N/A	Partially complete. New executive director for the South Carolina Institute on the Prevention of Sexual Violence on College Campuses was hired on January 2, 2024 with expectations that this goal may be completed within the next fiscal year. Early conversations with target workgroup members has already begun.
<b>3.1 Develop, expand, and maintain a comprehensive program to ensure the success and forward progress of all Lander University students inside and outside the classroom</b> State Objective: Education, Training, and Human Development														
3.1.1	By June 30, 2024, Lander University will develop, implement, and assess a successful university-wide academic recovery program for first-year students. The program will create an academic coaching department, interventions, and resources to support students to proactively increase student success.	0%	100%	100%	Percent complete	Complete	State Fiscal Year		Internal Records	Office of the President	Access and support from a South Carolina regional comprehensive university to obtain an undergraduate or graduate degree.	General Public: Students who are high school graduates, veterans, or adults who seek to continue their education or launch their career.	N/A	
<b>4.1 Expand and maintain the university's facilities and infrastructure to achieve and sustain the institutional mission</b> State Objective: Education, Training, and Human Development														
4.1.1	By June 30, 2024, repair and replace major utilities of the Graduate School and Administrative Office building.	0%	100%	50%	Percent complete	Complete	State Fiscal Year		Internal Records	Office of the President	Access and support from a South Carolina regional comprehensive university to obtain an undergraduate or graduate degree.	General Public: Students who are high school graduates, veterans, or adults who seek to continue their education or launch their career.	N/A	Partially complete. Project is underway, mobilized in August. This portion of the project to be completed in January.

# Strategic Plan Development

# FY2025

as submitted for the Accountability Report by:

H210 - Lander University

- Goal 1** Provide a supportive environment that fosters academic excellence through a teacher-scholar model. This model ensures effective teaching, explorative and creative activities, research, and service to our community. These areas of focus ensure that Lander will always remain distinctive and relevant.
- Goal 2** Create an educational environment that fosters forward progress of all Lander students, designed to achieve a measurable increase in retention and graduation rates.
- Goal 3** Successfully articulate the value of Lander University to faculty and staff, current students, future students, parents, alumni, donors, K-12 educators, and elected officials.

Perf. Measure Number	Description	Base	Target	Value Type	Desired Outcome	Time Applicable	Calculation Method	Data Source	Data Location	Stakeholder Need Satisfied	Primary Stakeholder	State Funded Program Number Responsible	Notes
<b>1.1 Expand experiential learning, active learning, and career skills with a focus on workforce development outcomes. State Objective: Education, Training, and Human Development</b>													
1.1.1	Explore "Experience your Future" experiential learning, active learning, and career skills for workforce development as a possible QEP topic for 2027 SACSCOC reaccreditation	0%	100%	Percent complete	Complete	State Fiscal Year		Internal Records	Office of Academic Affairs	Access and support from a South Carolina regional comprehensive university to obtain an undergraduate or graduate degree.	General Public: Students who are high school graduates, veterans, or adults who seek to continue their education or launch their career.	N/A	
<b>1.2 Clarify institutional expectations and support for faculty professional development activities, as distinct from scholarship, that inform faculty alignment of instruction with the needs of current students and with emerging technologies. State Objective: Education, Training, and Human Development</b>													
1.2.1	Leverage the Center for Faculty Excellence (CFE) in providing professional development for faculty focused on academic, social, and demographic characteristics of current students; instructional methodologies and academic support needed for success; and emerging technologies with anticipated future workplace applications.	0%	100%	Percent complete	Complete	State Fiscal Year		Internal Records	Office of Academic Affairs	Access and support from a South Carolina regional comprehensive university to obtain an undergraduate or graduate degree.	General Public: Students who are high school graduates, veterans, or adults who seek to continue their education or launch their career.	N/A	
<b>1.3 Increase the quality and frequency of scholarship and research by tenured and tenure track faculty. State Objective: Education, Training, and Human Development</b>													
1.3.1	Provide guidance, promotion, and administrative support for faculty scholarship and research	0%	100%	Percent complete	Complete	State Fiscal Year		Internal Records	Office of Academic Affairs	Access and support from a South Carolina regional comprehensive university to obtain an undergraduate or graduate degree.	General Public: Students who are high school graduates, veterans, or adults who seek to continue their education or launch their career.	N/A	
<b>1.4 Document the participation of Lander University faculty in activities that provide service to the community. State Objective: Education, Training, and Human Development</b>													
1.4.1	Provide guidance, promotion, and administrative support for documenting faculty service to the community	0%	100%	Percent complete	Complete	State Fiscal Year		Internal Records	Office of Academic Affairs	Access and support from a South Carolina regional comprehensive university to obtain an undergraduate or graduate degree.	General Public: Students who are high school graduates, veterans, or adults who seek to continue their education or launch their career.	N/A	
<b>1.5 Maintain administrative and organizational structures in Academic Affairs that promote excellence and sustainability of academic programs. State Objective: Education, Training, and Human Development</b>													
1.5.1	Explore and implement improvements in the organizational structure of Academic Affairs that align marketing opportunities with student career goals and cultivate synergies between faculty related to teaching, scholarship, and research.	0%	100%	Percent complete	Complete	State Fiscal Year		Internal Records	Office of Academic Affairs	Access and support from a South Carolina regional comprehensive university to obtain an undergraduate or graduate degree.	General Public: Students who are high school graduates, veterans, or adults who seek to continue their education or launch their career.	N/A	

Perf. Measure Number	Description	Base	Target	Value Type	Desired Outcome	Time Applicable	Calculation Method	Data Source	Data Location	Stakeholder Need Satisfied	Primary Stakeholder	State Funded Program Number Responsible	Notes
<b>1.6 Ensure state of the art facilities to support excellence in instruction and academic support. State Objective: Education, Training, and Human Development</b>													
1.6.1	Collaborate with the Office of Finance and Facilities on the design and development of new and repurposed academic facilities.	0%	100%	Percent complete	Complete	State Fiscal Year		Internal Records	Office of Academic Affairs	Access and support from a South Carolina regional comprehensive university to obtain an undergraduate or graduate degree.	General Public: Students who are high school graduates, veterans, or adults who seek to continue their education or launch their career.	N/A	
<b>2.1 Provide, innovative holistic pathways to improve academic retention outcomes. State Objective: Education, Training, and Human Development</b>													
2.1.1	By June 30th, 2025, increase 1st time freshman academic retention by 1%	0%	1%	Percent	Equal to or greater than	State Fiscal Year		Internal Records	Office of Academic Affairs	Access and support from a South Carolina regional comprehensive university to obtain an undergraduate or graduate degree.	General Public: Students who are high school graduates, veterans, or adults who seek to continue their education or launch their career.	N/A	
2.1.2	By June 30th, 2025, increase sophomore academic retention by 1%	0%	1%	Percent	Equal to or greater than	State Fiscal Year		Internal Records	Office of Academic Affairs	Access and support from a South Carolina regional comprehensive university to obtain an undergraduate or graduate degree.	General Public: Students who are high school graduates, veterans, or adults who seek to continue their education or launch their career.	N/A	
2.1.3	By June 30th, 2025, increase academic good standing percentages for 1st time freshman by increasing the persistence rate by 2%	0%	2%	Percent	Equal to or greater than	State Fiscal Year		Internal Records	Office of Academic Affairs	Access and support from a South Carolina regional comprehensive university to obtain an undergraduate or graduate degree.	General Public: Students who are high school graduates, veterans, or adults who seek to continue their education or launch their career.	N/A	
<b>2.2 Strengthen belonging with higher levels of engagement along student experience pathways. State Objective: Education, Training, and Human Development</b>													
2.2.1	By June 30th, 2025, set target engagement thresholds to increase student participation in student clubs and organizations over the next 5 years	0%	100%	Percent complete	Complete	State Fiscal Year		Internal Records	Office of Academic Affairs	Access and support from a South Carolina regional comprehensive university to obtain an undergraduate or graduate degree.	General Public: Students who are high school graduates, veterans, or adults who seek to continue their education or launch their career.	N/A	
2.2.2	By June 30th, 2025, increase engagement percentages of clubs/organizations by 3%	0%	3%	Percent	Equal to or greater than	State Fiscal Year		Internal Records	Office of Academic Affairs	Access and support from a South Carolina regional comprehensive university to obtain an undergraduate or graduate degree.	General Public: Students who are high school graduates, veterans, or adults who seek to continue their education or launch their career.	N/A	
2.2.3	By June 30th, 2025, increase student attendance at on-campus events by 2%	0%	2%	Percent	Equal to or greater than	State Fiscal Year		Internal Records	Office of Academic Affairs	Access and support from a South Carolina regional comprehensive university to obtain an undergraduate or graduate degree.	General Public: Students who are high school graduates, veterans, or adults who seek to continue their education or launch their career.	N/A	
<b>2.3 Enhance student navigation for 6-year graduation pathways. State Objective: Education, Training, and Human Development</b>													
2.3.1	By June 30th, 2025, conduct a 15-year analysis of the Lander student experience to identify (1) barriers that impede a high graduation rate and (2) support structures that facilitate a high retention rate.	0%	100%	Percent complete	Complete	State Fiscal Year		Internal Records	Office of Academic Affairs	Access and support from a South Carolina regional comprehensive university to obtain an undergraduate or graduate degree.	General Public: Students who are high school graduates, veterans, or adults who seek to continue their education or launch their career.	N/A	
<b>3.1 Hire an experienced executive to provide vision, strategy, and oversight for all marketing and communications functions at the university. State Objective: Education, Training, and Human Development</b>													



Perf. Measure Number	Description	Base	Target	Value Type	Desired Outcome	Time Applicable	Calculation Method	Data Source	Data Location	Stakeholder Need Satisfied	Primary Stakeholder	State Funded Program Number Responsible	Notes
3.1.1	By June 30, 2025, hire the university's first Vice President for Marketing and Communications.	0%	100%	Percent complete	Complete	State Fiscal Year		Internal Records	Office of Marketing and Communications	Access and support from a South Carolina regional comprehensive university to obtain an undergraduate or graduate degree.	General Public: Students who are high school graduates, veterans, or adults who seek to continue their education or launch their career.	N/A	
<b>3.2 Develop short- and long-term strategic plans for social media and marketing of Lander University.</b>										<b>State Objective: Education, Training, and Human Development</b>			
3.2.1	By June 30, 2025, develop short- and long-term strategic plans for social media and marketing of Lander University.	0%	100%	Percent complete	Complete	State Fiscal Year		Internal Records	Office of Marketing and Communications	Access and support from a South Carolina regional comprehensive university to obtain an undergraduate or graduate degree.	General Public: Students who are high school graduates, veterans, or adults who seek to continue their education or launch their career.	N/A	

# 2025

## Budget Data

as submitted for the Accountability Report by:

H210 - Lander University

State Funded Program No.	State Funded Program Title	Description of State Funded Program	(Actual) General	(Actual) Other	(Actual) Federal	(Actual) Total	(Projected) General	(Projected) Other	(Projected) Federal	(Projected) Total
4500.010000.000	Education & General	Supports the financial stability of the university by funding all instruction, academic support, student services, athletics, institutional support, and operation and maintenance of plant.	\$ 17,648,912.00	\$ 53,220,783.00	\$ 9,126,962.00	\$ 79,996,657.00	\$ 20,287,789.00	\$ 47,631,008.50	\$ 8,667,383.50	\$ 76,586,181.00
6000.000000.000	Auxiliary Enterprises	These functions charge for their services and are 100% self-supporting. They include Housing, Bookstore, and Dining Services.	\$-	\$ 14,590,267.24	\$-	\$ 14,590,267.24	\$-	\$ 14,888,739.39	\$-	\$ 14,888,739.39
9500.050000.000	State Employer Contributions	Employee benefits are the employer's share of related FICA, retirement, unemployment insurance, workers compensation, health and dental insurance for all employees.	\$ 3,292,461.00	\$ 10,911,387.13	\$ 73,041.08	\$ 14,276,889.21	\$ 3,292,461.00	\$ 12,901,875.14	\$ 76,783.50	\$ 16,271,119.64

# 2025

## Legal Data

as submitted for the Accountability Report by:

### H210 - Lander University

Law number	Jurisdiction	Type	Description	Purpose the law serves:	Notes:	Changes made during FY2024
Title 59, Chapter 101, Section 10	State	Statute	Lander University is designated as a public, higher education institution in South Carolina	Not related to agency deliverable		No Change
Title 59, Chapter 103, Section 35	State	Statute	Lander University answers to the South Carolina General Assembly through the South Carolina Commission on Higher Education (CHE), which possesses regulatory control over South Carolina public colleges and universities such that "No new program may be undertaken by any public institution of higher education without approval of the Commission."	Requires a service	Degrees.	No Change
Title 59, Chapter 135, Section 30(9)	State	Statute	The Lander Board of Trustees is constituted a body corporate and politic and is authorized to "confer degrees upon students and other persons as the board considers qualified"	Requires a service	Degrees.	No Change
Title 59, Chapter 101, Section 10	State	Statute	Lander University is designated as a public, higher education institution in South Carolina	Not related to agency deliverable.		No Change
Title 59, Chapter 103, Section 35	State	Statute	Lander University answers to the South Carolina General Assembly through the South Carolina Commission on Higher Education (CHE), which possesses regulatory control over South Carolina public colleges and universities such that "No new program may be undertaken by any public institution of higher education without approval of the Commission."	Requires a service	Degrees.	No Change
Title 59, Chapter 135, Section 30(9)	State	Statute	The Lander Board of Trustees is constituted a body corporate and politic and is authorized to "confer degrees upon students and other persons as the board considers qualified"	Requires a service	Degrees.	No Change

# 2025

## Services Data

as submitted for the Accountability Report by:  
**H210 - Lander University**

Description of Service	Description of Direct Customer	Customer Name	Others Impacted by Service	Division or major organizational unit providing the service.	Description of division or major organizational unit providing the service.	Primary negative impact if service not provided.	Changes made to services during FY2024	Summary of changes to services
With more than 60 areas of study, Lander offers incoming students degree opportunities to meet career and personal goals.	Public: High school graduates, veterans, adults looking for a second career.	General Public	Public: High school graduates, veterans, adults looking for a second career.	Lander University	Lander University is a community where learning, energy and creativity flourish. Established over 146 years ago, Lander's tradition of academic excellence is exemplified in its liberal arts and science programs, as well as professional programs in business, education, and nursing.	Loss of opportunity for South Carolina citizens in the region to advance their education, launch their careers, and continue to develop professionally within the state.	No Change	

# 2025

## Partnerships Data

as submitted for the Accountability Report by:

**H210 - Lander University**

Type of Partner Entity	Name of Partner Entity	Description of Partnership	Change to the partnership during the past fiscal year
Individual	Alumni	Provides financial support, institutional support, and student internship opportunities.	No Change
Higher Education Institute	Clemson University	Chemistry-Engineering Dual Degree Partner.	No Change
Higher Education Institute	Clemson University	Mathematics/CIS-Engineering Dual Degree Partner.	No Change
Local Government	Community and Elected Officials	Provides legislative support and opportunities for internships and service learning.	No Change
Individual	Donors	Provides scholarship and institutional support to the university.	No Change
K-12 Education Institute	Education clinical space partners	Provides Lander University teacher education students with clinical learning space and experience.	No Change
Private Business Organization	Employers	Lander University provides workforce development education opportunities, through signed agreements, to major industry employers in the state. Employers provide careers for graduates and shares labor market information that helps to shape high-demand, market-driven academic programs at the university.	No Change
Non-Governmental Organization	Healthcare clinical space partners	Provides Lander University nursing students with clinical learning space and experience.	No Change
K-12 Education Institute	High Schools	Provides Lander college-ready high school students for dual-enrollment course offerings.	No Change
Non-Governmental Organization	Lander University Board of Trustees	Provides oversight of university operations, policies, long-range planning and public accountability	No Change
State Government	South Carolina Legislature	Provides state appropriations to fund educational initiatives	No Change
Higher Education Institute	South Carolina Technical Schools	Various articulation agreements and MOUs for transfer students.	No Change

# 2025

## Reports Data

as submitted for the Accountability Report by:  
H210 - Lander University

Report Name	Law Number (if applicable)	Summary of information requested in the report	Date of most recent submission DURING the past fiscal year	Reporting Frequency	Type of entity/entities	Method to access the report	Direct access hyperlink or agency contact (if not provided to LSA for posting online)	Changes to this report during the past fiscal year	Explanation why a report wasn't submitted
Annual Report of Abatements	Section 59-112-70(A-C) and Section 59-101-620	By November first of each year, state supported institutions of higher learning must submit to the Commission on Higher Education the total number of out-of-state undergraduate students during the prior fiscal year that received abatement of rates pursuant to Section 59-112-70 of the 1976 Code as well as the total dollar amount of the abatements received.	October of 2023	Annually	South Carolina state agency or agencies	Available on agency's website	Director of Institutional Research, Mac Kirkpatrick, mkirkpatrick@lander.edu	No Change	
Faculty Report		Report demographic data on full and part-time faculty including salary, tenure status, contract length, etc.	November of 2023	Annually	South Carolina state agency or agencies	Hard copy available upon request	Director of Institutional Research, Mac Kirkpatrick, mkirkpatrick@lander.edu	No Change	
Fall Semester Course Report		Report course data by semester including subject taught, credit hours per course, starting and ending time and date, method of instruction, etc.	October of 2023	Annually	South Carolina state agency or agencies	Hard copy available upon request	Director of Institutional Research, Mac Kirkpatrick, mkirkpatrick@lander.edu	No Change	
Fall Semester Enrollment Report		Report enrollment by semester including demographic information such as gender, ethnicity, residency, gpa, high school data, etc.	October of 2023	Annually	South Carolina state agency or agencies	Hard copy available upon request	Director of Institutional Research, Mac Kirkpatrick, mkirkpatrick@lander.edu	No Change	
Fall Semester Scholarship Report		Report students by semester receiving state and federal grants and scholarships including PELL, SC LIFE, SC HOPE, demographic data, etc.	October of 2023	Annually	South Carolina state agency or agencies	Hard copy available upon request	Director of Institutional Research, Mac Kirkpatrick, mkirkpatrick@lander.edu	No Change	
IPEDS 12 - Month Enrollment Survey		The 12-Month Enrollment component collects unduplicated student enrollment counts and instructional activity data for an entire 12 -month period.	October of 2023	Annually	Entity within federal government	Hard copy available upon request	Director of Institutional Research, Mac Kirkpatrick, mkirkpatrick@lander.edu	No Change	
IPEDS Academic Libraries Survey		The purpose of the Academic Libraries survey is to collect information on library collections, library expenses, and library services for libraries in degree-granting postsecondary institutions.	March of 2024	Annually	Entity within federal government	Hard copy available upon request	Director of Institutional Research, Mac Kirkpatrick, mkirkpatrick@lander.edu	No Change	

Report Name	Law Number (if applicable)	Summary of information requested in the report	Date of most recent submission DURING the past fiscal year	Reporting Frequency	Type of entity/entities	Method to access the report	Direct access hyperlink or agency contact (if not provided to LSA for posting online)	Changes to this report during the past fiscal year	Explanation why a report wasn't submitted
IPEDES Admissions Survey		The primary purpose of admissions survey is to collect basic information about the undergraduate selection process for entering first-time, degree/certificate-seeking students. This includes information about admissions considerations, admissions yields, and SAT and ACT test scores (if test scores are required for admission).	January of 2024	Annually	Entity within federal government	Hard copy available upon request	Director of Institutional Research, Mac Kirkpatrick, mkirkpatrick@lander.edu	No Change	
IPEDES Completions Survey		This survey collects the number of degrees and certificates awarded by field of study, level of award, race/ethnicity, and gender. The reporting period for the Completions component is during the 12-month time period beginning July 1 of the previous calendar year and ending June 30 of the current calendar year.	October of 2023	Annually	Entity within federal government	Hard copy available upon request	Director of Institutional Research, Mac Kirkpatrick, mkirkpatrick@lander.edu	No Change	
IPEDES Enrollment Survey		The Fall Enrollment component collects student enrollment counts by level of student, enrollment status, gender and race/ethnicity. In addition, first-time student retention rates and the student-to-faculty ratio are collected.	March of 2024	Annually	Entity within federal government	Hard copy available upon request	Director of Institutional Research, Mac Kirkpatrick, mkirkpatrick@lander.edu	No Change	
IPEDES Finance Survey		The purpose of the IPEDES Finance component is to collect basic financial information from items associated with the institution's General Purpose Financial Statements using GASB (Governmental Accounting Standards Board) standards.	March of 2024	Annually	Entity within federal government	Hard copy available upon request	Director of Institutional Research, Mac Kirkpatrick, mkirkpatrick@lander.edu	No Change	
IPEDES Financial Aid Survey		The purpose of the Student Financial Aid survey is to collect information about financial aid provided to various groups of undergraduate students and military/veteran educational benefits for all students at the institution.	February of 2024	Annually	Entity within federal government	Hard copy available upon request	Director of Institutional Research, Mac Kirkpatrick, mkirkpatrick@lander.edu	No Change	

Report Name	Law Number (if applicable)	Summary of information requested in the report	Date of most recent submission DURING the past fiscal year	Reporting Frequency	Type of entity/entities	Method to access the report	Direct access hyperlink or agency contact (if not provided to LSA for posting online)	Changes to this report during the past fiscal year	Explanation why a report wasn't submitted
IPEDS Graduation Rate 200% Survey		The Graduation Rate 200 component is a further extension of the traditional Graduation Rates (GR) component which carries forward 100% and 150% graduation rates data previously reported in the GR component and requests information on any additional completers and exclusions from the cohort between 151% and 200% of normal time for students to complete all requirements of their program of study.	January of 2024	Annually	Entity within federal government	Hard copy available upon request	Director of Institutional Research, Mac Kirkpatrick, mkirkpatrick@lander.edu	No Change	
IPEDS Graduation Rate Survey		The Graduation Rate component collects data on the cohort of full-time, first-time degree/certificate-seeking undergraduate students and tracks their completion status at 150% of the normal time to complete all requirements of their program of study.	January of 2024	Annually	Entity within federal government	Hard copy available upon request	Director of Institutional Research, Mac Kirkpatrick, mkirkpatrick@lander.edu	No Change	
IPEDS Human Resources Survey		The HR component collects important information about the staff of the institution including faculty (instructional staff) and non-instructional staff by occupational category.	March of 2024	Annually	Entity within federal government	Hard copy available upon request	Director of Institutional Research, Mac Kirkpatrick, mkirkpatrick@lander.edu	No Change	
IPEDS Institutional Characteristics Survey		Report data on institution including student services, veterans services, tuition and fees, price of attendance, etc.	September of 2023	Annually	Entity within federal government	Hard copy available upon request	Director of Institutional Research, Mac Kirkpatrick, mkirkpatrick@lander.edu	No Change	
IPEDS Outcome Measures Survey		The Outcome Measures survey collects award and enrollment data from degree-granting institutions on four undergraduate cohorts at two points in time: six-year and eight-year for four cohorts of degree-seeking undergraduates. The four cohorts are: Full-time, first-time; Part-time, first-time; Full-time, non-first-time; Part-time, non-first-time.	January of 2024	Annually	Entity within federal government	Hard copy available upon request	Director of Institutional Research, Mac Kirkpatrick, mkirkpatrick@lander.edu	No Change	



Report Name	Law Number (if applicable)	Summary of information requested in the report	Date of most recent submission DURING the past fiscal year	Reporting Frequency	Type of entity/entities	Method to access the report	Direct access hyperlink or agency contact (if not provided to LSA for posting online)	Changes to this report during the past fiscal year	Explanation why a report wasn't submitted
NC - SARA Annual Enrollment Report		Annually report to the National Council for State Authorization Reciprocity Agreements the number of students enrolled in the institution via distance education delivered outside the home state of the institution, disaggregated by state, territory, or district in which the students reside.	May of 2024	Annually	Other	Hard copy available upon request	Director of Institutional Research, Mac Kirkpatrick, mkirkpatrick@lander.edu	No Change	
NCAA Graduation Success Rates/Academic Success Report		Data for graduation rates, enrollment, Graduation Success Rates and Academic Success Rates is collected.	April of 2024	Annually	Other	Hard copy available upon request	Director of Institutional Research, Mac Kirkpatrick, mkirkpatrick@lander.edu	No Change	
Program Completers		Report the program students graduated in the last academic year including program name, program code, degree type, semester of graduation, demographic data, etc.	September of 2023	Annually	South Carolina state agency or agencies	Hard copy available upon request	Director of Institutional Research, Mac Kirkpatrick, mkirkpatrick@lander.edu	No Change	
Report on Admission Standards for First-Time Entering Freshmen		Collects data on first-time freshmen applicants, including SAT scores, high school rank, high school gpa, etc.		Annually	South Carolina state agency or agencies	Hard copy available upon request	Director of Institutional Research, Mac Kirkpatrick, mkirkpatrick@lander.edu	No Change	Report not requested from SCCHE. Last request for a report from SCHE was July 2023.
Southern Association of Colleges and Schools Commission on Colleges Institutional Profile Report		This report gathers: General Information, Institutional Personnel Information, Enrollment Information, and Graduation Rate data.	December of 2023	Annually	Other	Hard copy available upon request	Director of Institutional Research, Mac Kirkpatrick, mkirkpatrick@lander.edu	No Change	
Spring Semester Course Report		Report course data by semester including subject taught, credit hours per course, starting and ending time and date, method of instruction, etc.	March of 2024	Annually	South Carolina state agency or agencies	Hard copy available upon request	Director of Institutional Research, Mac Kirkpatrick, mkirkpatrick@lander.edu	No Change	
Spring Semester Enrollment Report		Report enrollment by semester including demographic information such as gender, ethnicity, residency, gpa, high school data, etc.	March of 2024	Annually	South Carolina state agency or agencies	Hard copy available upon request	Director of Institutional Research, Mac Kirkpatrick, mkirkpatrick@lander.edu	No Change	

Report Name	Law Number (if applicable)	Summary of information requested in the report	Date of most recent submission DURING the past fiscal year	Reporting Frequency	Type of entity/entities	Method to access the report	Direct access hyperlink or agency contact (if not provided to LSA for posting online)	Changes to this report during the past fiscal year	Explanation why a report wasn't submitted
Spring Semester Scholarship Report		Report students by semester receiving state and federal grants and scholarships including PELL, SC LIFE, SC HOPE, demographic data, etc.	March of 2024	Annually	South Carolina state agency or agencies	Hard copy available upon request	Director of Institutional Research, Mac Kirkpatrick, mkirkpatrick@lander.edu	No Change	
Summer Semester Course Report		Report course data by semester including subject taught, credit hours per course, starting and ending time and date, method of instruction, etc.	August of 2023	Annually	South Carolina state agency or agencies	Hard copy available upon request	Director of Institutional Research, Mac Kirkpatrick, mkirkpatrick@lander.edu	No Change	
Summer Semester Enrollment Report		Report enrollment by semester including demographic information such as gender, ethnicity, residency, gpa, high school data, etc.	August of 2023	Annually	South Carolina state agency or agencies	Hard copy available upon request	Director of Institutional Research, Mac Kirkpatrick, mkirkpatrick@lander.edu	No Change	

<b>AGENCY NAME:</b>	Lander University		
<b>AGENCY CODE:</b>	H210	<b>SECTION:</b>	018

**2024  
Accountability Report**

**SUBMISSION FORM**

I have reviewed and approved the data submitted by the agency in the following templates:

- Data Template
  - Reorganization and Compliance
  - FY2024 Strategic Plan Results
  - FY2025 Strategic Plan Development
  - Legal
  - Services
  - Partnerships
  - Report or Review
  - Budget
- Discussion Template
- Organizational Template

I have reviewed and approved the financial report summarizing the agency’s budget and actual expenditures, as entered by the agency into the South Carolina Enterprise Information System.

The information submitted is complete and accurate to the extent of my knowledge.

<b>AGENCY DIRECTOR</b> <i>(SIGN AND DATE):</i>  <b>(TYPE/PRINT NAME):</b>	<b>SIGNATURE ON FILE</b>	<b>Signature Received:</b> 09/13/2024
	Richard Cosentino	

<b>BOARD/CMSN CHAIR</b> <i>(SIGN AND DATE):</i>  <b>(TYPE/PRINT NAME):</b>	<b>SIGNATURE ON FILE</b>	<b>Signature Received:</b> 09/13/2024
	Don Scott	